

**48 Pole
With Ground**
PROTECTION
IP65
RATING



**Component
Parts**

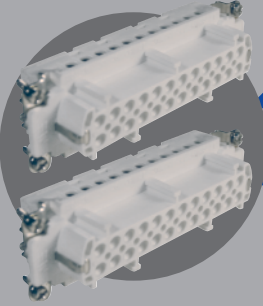
Pre-Assembled Units

Covers

FEMALE

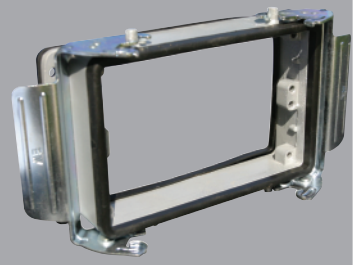
Insert

29024
(1-24)

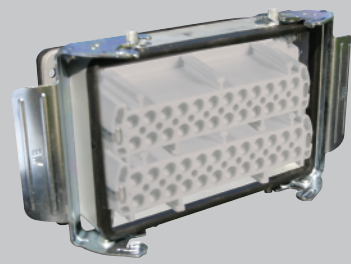


29028
(25-48)

Bulkhead Housing



29048



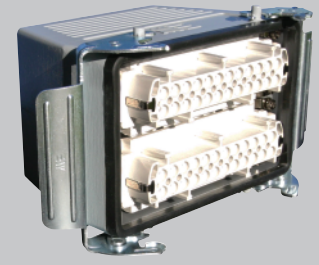
403060

Hood



Top Entry
29067
29067M

Side Entry
29068
29068M



Top Entry
403066
403066M

Side Entry
403067
403067M



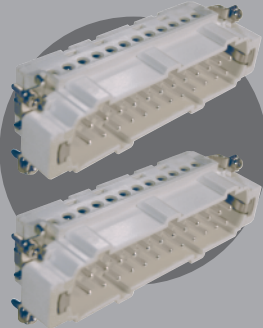
29661

Standard Part Numbers are
NPT threads.
Part numbers with an "M"
are metric thread.

MALE

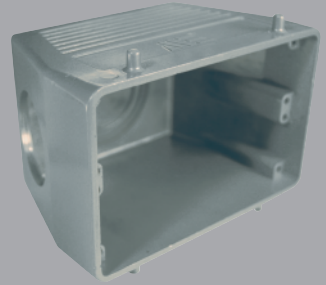
Insert

29025
(1-24)



29029
(25-48)

Hood



Top Entry
29065
29065M

Side Entry
29066
29066M



Top Entry
403064
403064M

Side Entry
403065
403065M



29663



Connectors should not be coupled
and decoupled under electrical load.

Inserts

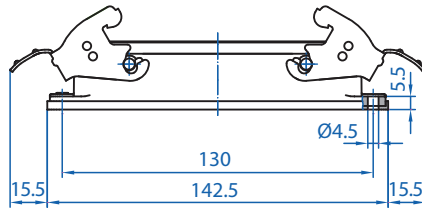
Number of contacts	48 Pole w/ ground
Electrical data to DIN EN61 984	16A 400V 6KV 3
Current	16A
Voltage	400V
Rated Impulse Voltage	6KV
Insulation Resistance	≥10 ¹⁰ Ω
Temperature Range	-40 to 125°C
Flammability	UL94-V0

Contacts

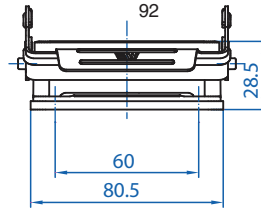
Screw terminal	
Material	Copper alloy
Surface plated	hard-silver
Contact resistance	≤ 1m Ω
Wire size	2.5mm ² / 14 AWG
Torque	0.5Nm
Stripping Length	7.5mm

Metal Hoods & Housings

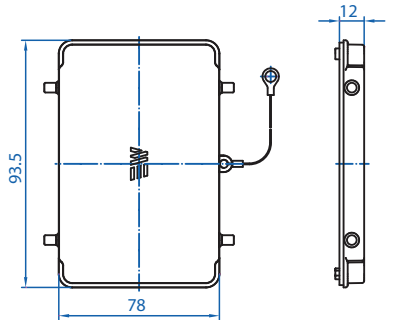
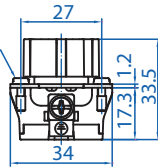
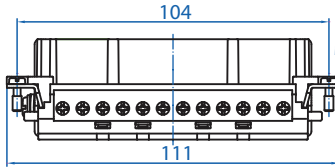
Material	Aluminum
Surface	Powder coated
Seals	NBR
Degree of Protection Acc To	
DIN EN60529 for coupled connectors	IP65
Thread Size	NPT 1" or M40



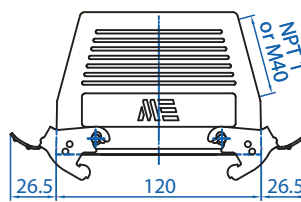
29048



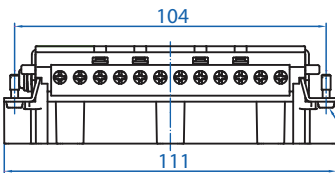
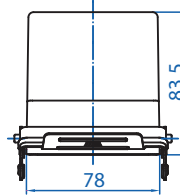
29024
29028



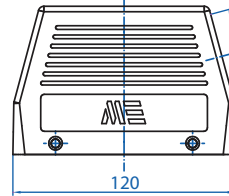
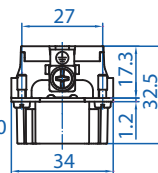
29661



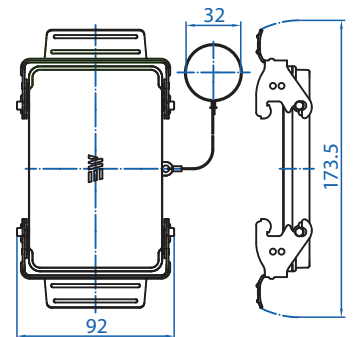
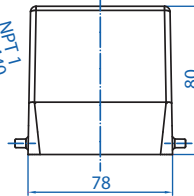
29068



29025
29029



29066



29663



Connectors should not be coupled and decoupled under electrical load.

All dimensions are shown in millimeters. To convert to inches divide by 25.4.

Mouser Electronics

Authorized Distributor

Click to View Pricing, Inventory, Delivery & Lifecycle Information:

Altech:

[29028](#) [29029](#) [29048](#) [29065](#) [29066](#) [29067](#) [29068](#) [29661](#) [29663](#) [403060](#) [403064](#) [403065](#) [403066](#) [403067](#)
[29065M](#) [29066M](#) [29067M](#) [29068M](#) [403064M](#) [403065M](#) [403066M](#) [403067M](#)