

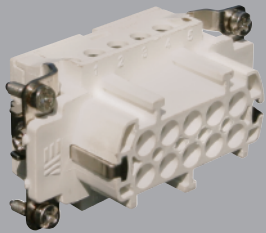
**10 Pole
With Ground**
PROTECTION
IP65
RATING
E307105
CE

**Component
Parts**

Pre-Assembled Units

Covers

**FEMALE
Insert**



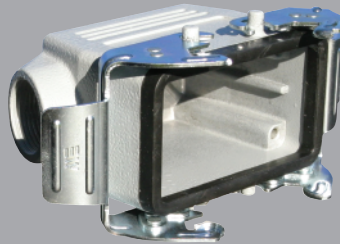
29020

Bulkhead Housing



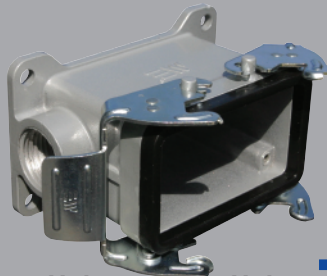
29040

Hood



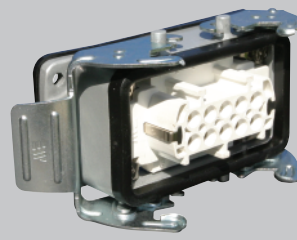
29049
29049M

**Surface Mount
Housing**

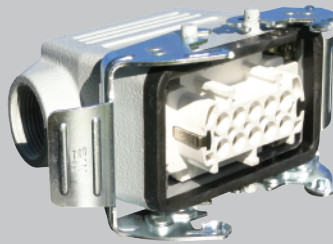


1 Hole
29054
29054M

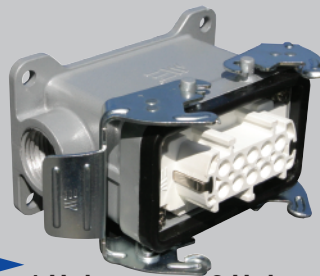
2 Hole
29055
29055M



403020



403025
403025M



1 Hole
403026
403026M

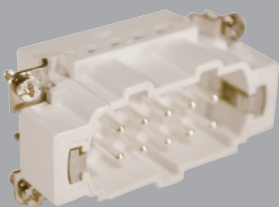
2 Hole
403028
403028M



29650

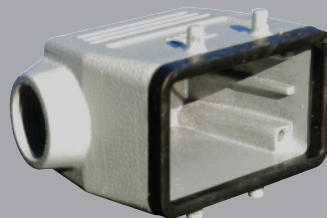
Standard Part Numbers are
NPT threads.
Part numbers with an "M"
are metric thread.

**MALE
Insert**

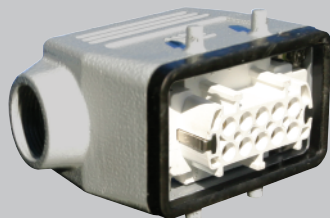


29021

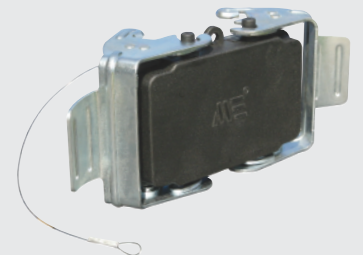
Hood



29041
29041M



403023
403023M



29653



Connectors should not be coupled
and decoupled under electrical load.

Inserts

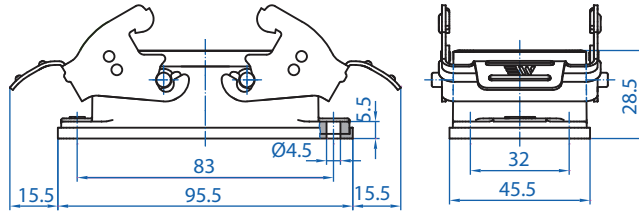
| | |
|---------------------------------|---------------------|
| Number of contacts | 10 Pole w/ ground |
| Electrical data to DIN EN61 984 | 16A 400V 6KV 3 |
| Current | 16A |
| Voltage | 400V |
| Rated Impulse Voltage | 6KV |
| Insulation Resistance | ≥10 ¹⁰ Ω |
| Temperature Range | -40 to 125°C |
| Flammability | UL94-V0 |

Contacts

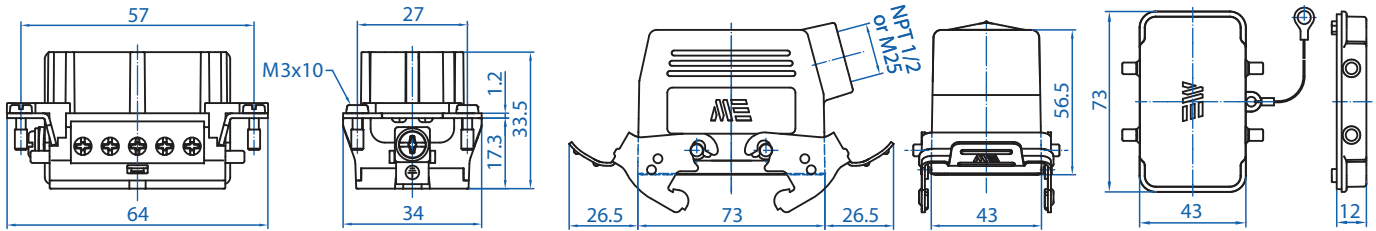
| | |
|--------------------|-----------------------------|
| Screw terminal | |
| Material | Copper alloy |
| Surface plated | hard-silver |
| Contact resistance | ≤ 1m Ω |
| Wire size | 2.5mm ² / 14 AWG |
| Torque | 0.5Nm |
| Stripping Length | 7.5mm |

Metal Hoods & Housings

| | |
|------------------------------------|-----------------|
| Material | Aluminum |
| Surface | Powder coated |
| Seals | NBR |
| Degree of Protection Acc To | IP65 |
| DIN EN60529 for coupled connectors | IP65 |
| Thread Size | NPT 1/2" or M25 |



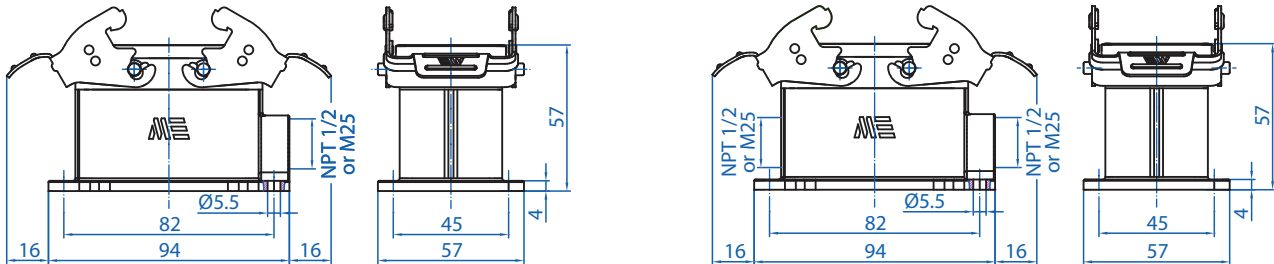
29040



29020

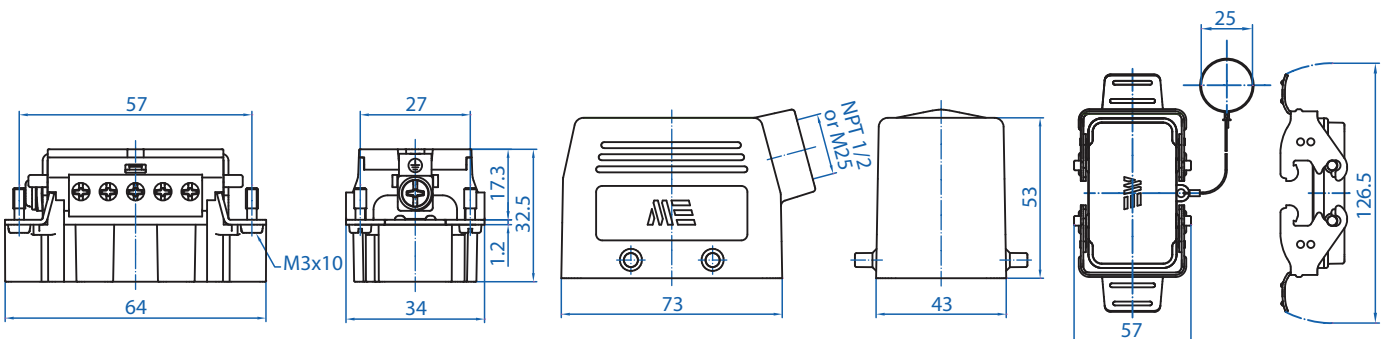
29049

29650



29054

29055



29021

29041

29653



Connectors should not be coupled and decoupled under electrical load.

All dimensions are shown in millimeters. To convert to inches divide by 25.4.

Mouser Electronics

Authorized Distributor

Click to View Pricing, Inventory, Delivery & Lifecycle Information:

Altech:

[29020](#) [29021](#) [29040](#) [29041](#) [29049](#) [29054](#) [29055](#) [29650](#) [29653](#) [403020](#) [403023](#) [403025](#) [403026](#) [403028](#)
[29041M](#) [29049M](#) [29054M](#) [29055M](#) [403023M](#) [403025M](#) [403026M](#) [403028M](#)