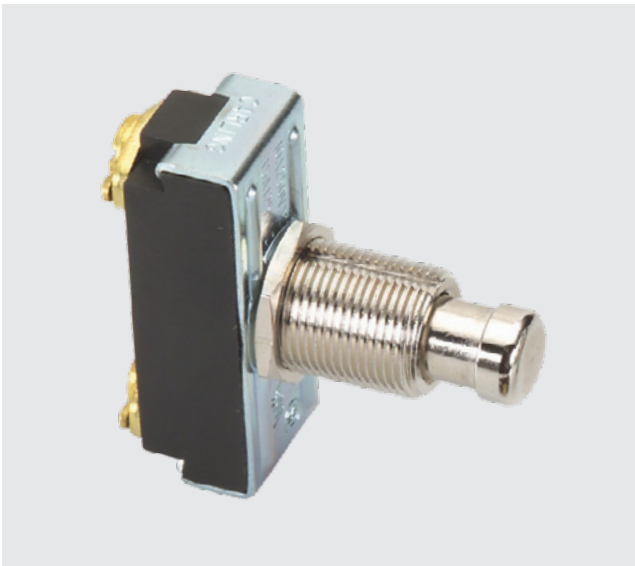


170/172-Series

PUSHBUTTON SWITCHES

The 170/172-Series pushbutton switches are single pole, high amperage switches suitable for shallow back panel applications. These switches are momentary action and require an actuation force of 2.5 lbs. The 170/172-Series switches are equipped with a slow-make, slow-break contact mechanism and are rated at 15 amps at 125VAC.



Product Highlights:

- ♦ Rated to 15A 125VAC
- ♦ Sturdy metal clad construction
- ♦ Metal plunger available with optional colored plastic cap
- ♦ Momentary On or Momentary Off circuitry

Typical Applications:

- ♦ Test & Measurement
- ♦ Meters
- ♦ Horns



Dielectric Strength

UL/CSA: 1000V - live to dead metal parts

Electrical Life

25,000 cycles - Momentary

Mechanical Life

100,000 cycles

Operating Temperature

32°F to 185°F (0°C to 85°C)

172 - **CBL**

¹ Base Part Number ² Cap Style/Color

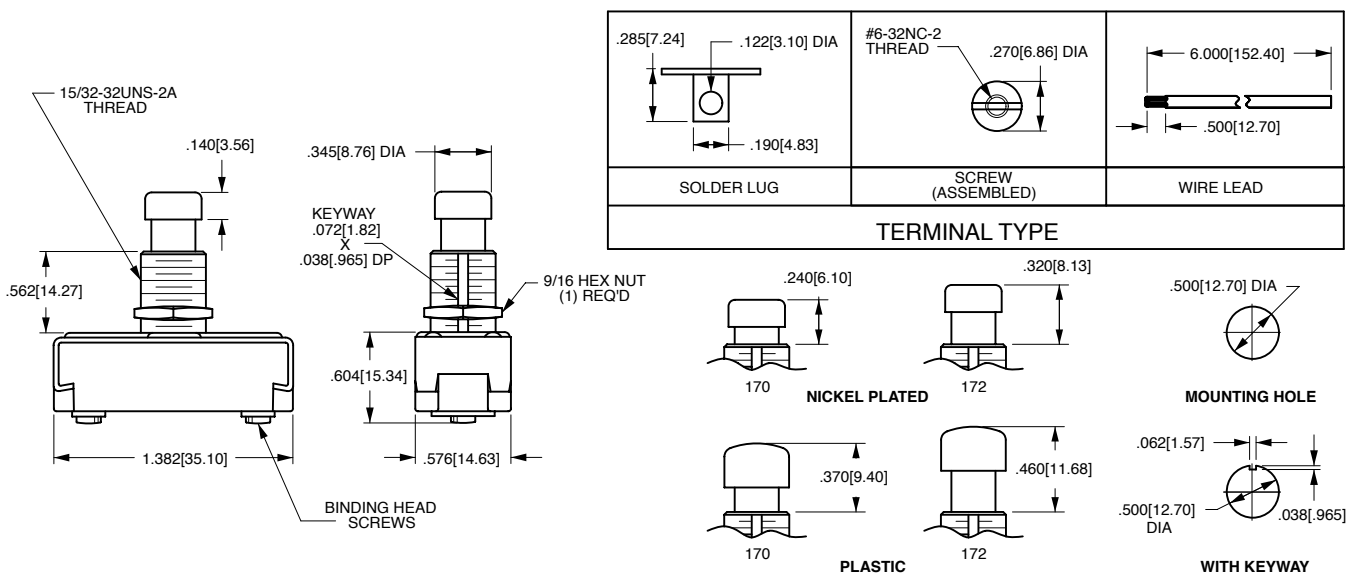
1 BASE PART NUMBER: SERIES / POLES / CIRCUITRY / RATING / TERMINATION
10A 250VAC; 15A 125VAC

Single Pole	Solder Lug	Wire Leads	Screw Terms.
On-(Off)	170-B	170-A	170
Off-(On)	172-B	172-A	172

2 CAP STYLE / COLOR ¹

CBL	Black Plastic
CGN	Green Plastic
CRD	Red Plastic
CWH	White Plastic

Notes:
 1 When selection 2 is left blank, a standard nickel plated plunger is supplied.
 () Indicates momentary function.



*Manufacturer reserves the right to change product specification without prior notice.

Authorized Sales Representatives and Distributors

Click on a region of the map below to find your local representatives and distributors or visit www.carlingtech.com/findarep.



About Carling

Founded in 1920, Carling Technologies is a leading manufacturer of electrical and electronic switches and assemblies, circuit breakers, electronic controls, power distribution units, and multiplexed power distribution systems. With four ISO registered manufacturing facilities and technical sales offices worldwide, Carling Technologies Sales, Service and Engineering teams do much more than manufacture electrical components, they engineer powerful solutions! To learn more about Carling please visit www.carlingtech.com/company-profile.

To view all of Carling's environmental, quality, health & safety certifications please visit www.carlingtech.com/environmental-certifications

Worldwide Headquarters

Carling Technologies, Inc.
60 Johnson Avenue, Plainville, CT 06062
Phone: 860.793.9281 **Fax:** 860.793.9231
Email: sales@carlingtech.com

Northern Region Sales Office: nrsm@carlingtech.com
Southeast Region Sales Office: sersm@carlingtech.com
Midwest Region Sales Office: mrsm@carlingtech.com
West Region Sales Office: wrsm@carlingtech.com
Latin America Sales Office: larsm@carlingtech.com

Asia-Pacific Headquarters

Carling Technologies, Asia-Pacific Ltd.,
Suite 1607, 16/F Tower 2, The Gateway,
Harbour City, 25 Canton Road,
Tsimshatsui, Kowloon, Hong Kong
Phone: Int + 852-2737-2277 **Fax:** Int + 852-2736-9332
Email: sales@carlingtech.com.hk

Shenzhen, China: shenzhen@carlingtech.com
Shanghai, China: shanghai@carlingtech.com
Pune, India: india@carlingtech.com
Kaohsiung, Taiwan: taiwan@carlingtech.com
Yokohama, Japan: japan@carlingtech.com

Europe | Middle East | Africa Headquarters

Carling Technologies LTD
4 Airport Business Park, Exeter Airport,
Clyst Honiton, Exeter, Devon, EX5 2UL, UK
Phone: Int + 44 1392.364422 **Fax:** Int + 44 1392.364477
Email: ltd.sales@carlingtech.com

Germany: gmbh@carlingtech.com
France: sas@carlingtech.com



Carling Technologies®

Innovative Designs. Powerful Solutions.

Mouser Electronics

Authorized Distributor

Click to View Pricing, Inventory, Delivery & Lifecycle Information:

Carling Technologies:

[172](#) [170](#) [172-CBL](#) [172-A](#) [172-A-CGN](#) [172/HDW ASSM](#) [170-A-XRL1](#) [172-CGN](#) [170-A](#) [170-B-CWH](#) [172-A-CBL/2](#)
[HEX](#) [172-A-XSS1](#) [172-B/2 HEX](#) [170-A-CGN](#) [172-CBL/POLY](#) [170-B-CRD](#) [172/2 HEX](#) [172-B-CWH](#) [170-B-CBL](#) [172-](#)
[CWH](#) [170/NO HDW](#) [170-A-CRD/22](#) [170-CWH](#) [170/HDW ASSM](#) [172-B-CBL](#) [170-CRD](#) [172/POLY](#) [172-B/POLY](#)
[172-B-CGN](#) [172-CWH/2 HEX](#) [172-A-CRD-XTB1](#) [172/NO HDW](#) [172/SLOTTED PLUNGER](#) [172-CRD](#) [172-A-CBL](#)
[172-B](#) [170-B-CGN](#) [170-CGN](#) [172-A-CRD](#) [172-B/HDW ASSM](#) [172-B-CRD](#) [170XG1](#) [172/HDW BULK](#) [170/POLY](#)
[170-CRD/POLY](#) [170-A-CRD](#) [170-B](#) [172-B-CBL/2 HEX](#) [170-CBL](#) [170-A-CBL](#)