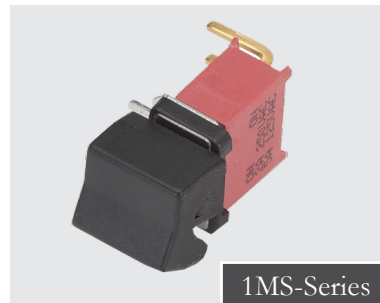
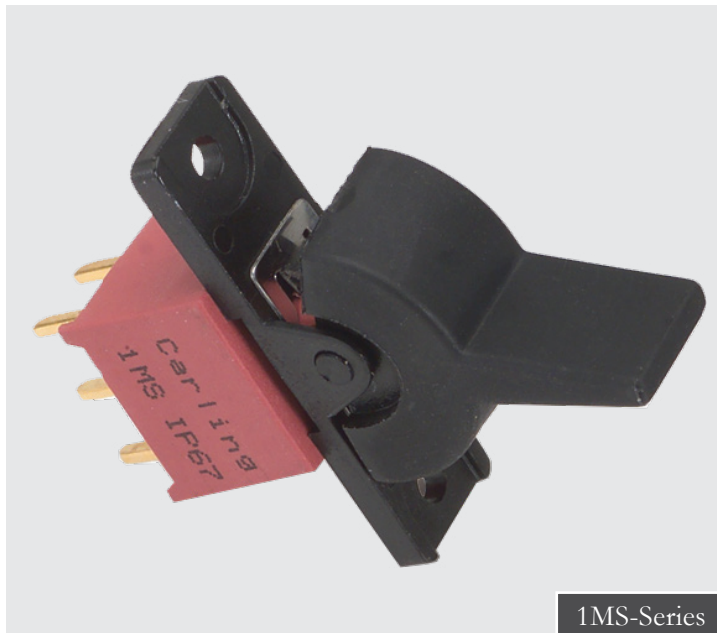


1MS/1M1

1M-Series

MINIATURE ROCKERS & PADDLES

The 1M family of miniature rocker & paddle switches is composed of two switch series; the **1M1-Series** miniature rocker and paddle switch, and the **1MS-Series** sealed miniature rocker and paddle switch. Both products feature PC mounting and offer a variety of ratings, circuits, contact materials, terminal platings, rocker and paddle actuator styles and colors.



Product Highlights:

- IP67 Sealing
- 9 Circuit Options
- Over 20 Termination Styles
- UL, CSA & cUL Approvals

Typical Applications:

- Instrumentation
- Test Equipment
- Telecommunications
- Networking
- Handheld Appliance

Resources:

[Configure a Complete Part](#)

[Download CAD & Sales Drawing >](#)



Carling Technologies®

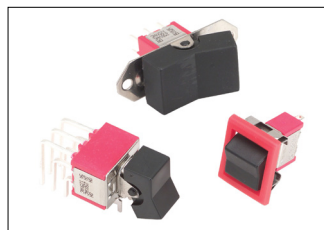
Innovative Designs. Powerful Solutions.

Carling Technologies, Inc.
60 Johnson Avenue, Plainville, CT 06062
Email: sales@carlingtech.com
Application Support: team2@carlingtech.com
Phone: 860.793.9281 Fax: 860.793.9231

www.carlingtech.com



1MS-Series
Sealed
 Miniature Rocker
 & Rocker Switch



1M1-Series
 Miniature Rocker
 & Rocker Switch

Electrical

Contact Rating	refer to ordering scheme
Electrical Life	<i>1MS-Series:</i> 30,000 make & break cycles @ full load <i>1M1-Series:</i> 50,000 make & break cycles @ full load
Contact Resistance	10 mΩ max. initial @ 2-4 VDC 100mA for both silver & gold plated contacts
Insulation Resistance	1000 MΩ min.
Dielectric Strength	1500 Volts RMS @ sea level

Physical

Operating Temperature	-30°C to +85°C
Index of Protection	1MS-Series: IP67
Solder Heat Resistance	MIL-STD-202, Method 210
Actuator Travel	25°

Material

Case	<i>1MS-Series:</i> Glass filled nylon 6/6, flame retardant, heat stabilized (UL 94V-0) <i>1M1-Series:</i> Dially phthalate (DAP) (UL 94V-0)
Rocker/Paddle	<i>1MS-Series:</i> Nylon, black standard, internal o-ring sealed <i>1M1-Series:</i> Nylon (UL 94V-0)
Bushing	<i>1MS-Series:</i> Glass filled nylon 6/6, flame retardant, heat stabilized (UL 94V-0) <i>1M1-Series:</i> Brass, nickel plated
Housing	<i>1MS-Series:</i> Spring Steel <i>1M1-Series:</i> Stainless Steel
Actuator Pivot & Mounting Bracket	<i>1MS-Series:</i> Nylon (UL 94V-0) <i>1M1-Series:</i> Stainless Steel
Actuator Pivot Retainer	<i>1MS-Series:</i> Stainless Steel
Switch Support	Brass, tin plated
Terminal Seal	Epoxy

*Manufacturer reserves the right to change product specification without prior notice.

1MS - SP 1 - R6 / 2 M6 G E

1 Series 2 Poles 3 Circuit 4 Actuator Style 5 Actuator Color 6 Termination 7 Contacts 8 Seal

1 SERIES

1MS Sealed Miniature Rocker Switch

2 POLES

SP Single pole - uses terminals 1, 2 & 3
DP Double pole uses terminals 1,2, 3, 4, 5 & 6
3P Three pole uses terminals 1,2, 3, 4, 5, 6, 7, 8 & 9

3 CIRCUIT

() - momentary

Position:	1	2	3
	2-3, 5-6, 8-9	Connected Terminals	2-1, 5-4, 8-7
1	ON	NONE	ON
2	ON	NONE	(ON)
3	ON	OFF	ON
4	(ON)	OFF	(ON)
5	ON	OFF	(ON)
6*	ON	ON	ON
7*	(ON)	ON	(ON)
8*	ON	ON	(ON)
9*	OFF	ON	(ON)

*Center Position Connects 2-3, 5-4, 8-9

4 ACTUATOR STYLE

R1 Standard Rocker	R4 Large Paddle
R2 Standard Paddle	R5 Large Rocker
R3 Medium Rocker	R6 Small Rocker
	R7 Medium Paddle

5 ACTUATOR COLOR

1 White **2** Black **3** Red
 Black is standard. Other colors available, consult factory.

6 TERMINATION

M1 Solder Lug	VS2 PC Mount, U bracket
M2 PCB	VS3 PC Mount, U bracket
M3 Quick Connect	VS4 PC Mount, U bracket
M51 Wire Wrap	VS5 PC Mount, U bracket
M52 Wire Wrap	VS21 Snap-In, U bracket
M53 Wire Wrap	VS31 Snap-In, U bracket
M54 Wire Wrap	VS41 Snap-In, U bracket
M6 PC Mount, 90° horizontal	VS51 Snap-In, U bracket
M7 PC Mount, 90° vertical	U2 Vertical Mount, 3-Pole
	U4 Snap-In, U bracket, 3-Pole

See page 16-18 for dimensional specifications.

7 CONTACTS / TERMINALS

Contact	Material	Terminal Plating	Rating	Approvals
G	silver ¹	gold over silver	5A 125VAC or 28VDC, 2A 250VAC	UL, IP67
K	gold 2.5	tin 4	0.4VA max 20V max (AC/DC)	IP67
P	silver 1.6	tin 4	5A 125VAC or 28VDC, 2A 250VAC	UL, IP67
R	gold 2	gold 3	0.4VA max 20V max (AC/DC)	IP67

8 EPOXY SEAL

E Epoxy Seal **0** without Epoxy Seal

Notes:

- Tin option not available with M1 and M3 terminals.
- 1 Movable contact and terminal platings: silver over copper alloy
- 2 Movable contact platings: gold over nickel over copper alloy
- 3 Terminal platings: gold over nickel over copper alloy
- 4 Terminal platings: tin over copper alloy
- 5 Terminal contact platings: gold over nickel alloy
- 6 Terminal contact platings: silver over nickel alloy

1M1 - SP 1 - R8 / 2 - M6 Q E

1 Series 2 Poles 3 Circuit 4 Actuator Style 5 Actuator Color 6 Frame Color 7 Termination 8 Contacts 9 Seal

1 SERIES

1M1 Miniature Rocker Switch

2 POLES

SP Single pole - uses terminals 1, 2 & 3
DP Double pole uses terminals 1,2, 3, 4, 5 & 6
3P Three pole uses terminals 1,2, 3, 4, 5, 6, 7, 8 & 9
4P Four pole uses terminals 1,2, 3, 4, 5, 6, 7, 8, 9, 10, 11, 12

3 CIRCUIT

() - momentary

Position:	1	2	3
	2-3, 5-6, 8-9, 11-12	Connected Terminals	2-1, 5-4, 8-7, 11-10
1	ON	NONE	ON
2	ON	NONE	(ON)
3	ON	OFF	ON
4	(ON)	OFF	(ON)
5	ON	OFF	(ON)
6 ¹	ON	ON	ON
7 ¹	(ON)	ON	(ON)
8 ¹	ON	ON	(ON)
9 ²	NONE	ON	(ON)

4 ACTUATOR STYLE

R1 Standard Rocker	R5 Large rocker
R2 Standard Paddle	R6 Rocker & frame
R3 Medium Rocker	R7 Paddle & frame
R4 Large Paddle	R8 Rocker without frame
	R9 Paddle without frame

5 ACTUATOR COLOR / 6 FRAME COLOR

0 No Frame* **2** Black
1 White **3** Red
 Black is standard. Other colors available, consult factory.
 *Actuator style R8 or R9 only.

7 TERMINATION

M1 Solder Lug	VS3 PC Mount, U bracket
M2 PCB	VS4 PC Mount, U bracket
M3 Quick Connect	VS5 PC Mount, U bracket
M51 Wire Wrap	M61 Snap-In, U bracket, 90° horizontal
M52 Wire Wrap	M71 Snap-In, U bracket, 90° vertical
M53 Wire Wrap	VS21 Snap-In, U bracket
M54 Wire Wrap	VS31 Snap-In, U bracket
M6 PC Mount, 90° horizontal	VS41 Snap-In, U bracket
M7 PC Mount, 90° vertical	VS51 Snap-In, U bracket
VS2 PC Mount, U bracket	U4 Snap-In, U bracket, 3-Pole

See page 21-23 for dimensional specifications.

8 CONTACTS / TERMINALS

Contact	Material	Terminal Plating	Rating	Approvals
G	silver ³	gold over silver	5A 125VAC or 28VDC, 2A 250VAC	UL, IP67
K	gold 4,7	tin 6	0.4VA max 20V max (AC/DC)	N/A
P	silver 3,8	tin 6	5A 125VAC or 28VDC, 2A 250VAC	UL, IP67
Q	silver ³	silver ³	5A 125VAC or 28VDC, 2A 250VAC	UL, IP67
R	gold 4	gold 5	0.4VA max 20V max (AC/DC)	N/A

9 EPOXY SEAL

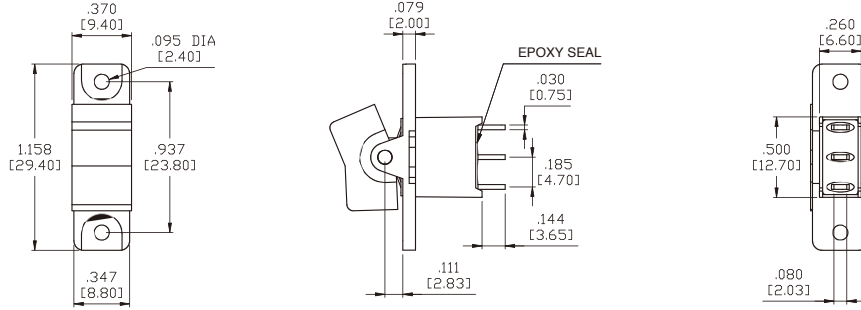
E Epoxy Seal **0** without Epoxy Seal

Notes:

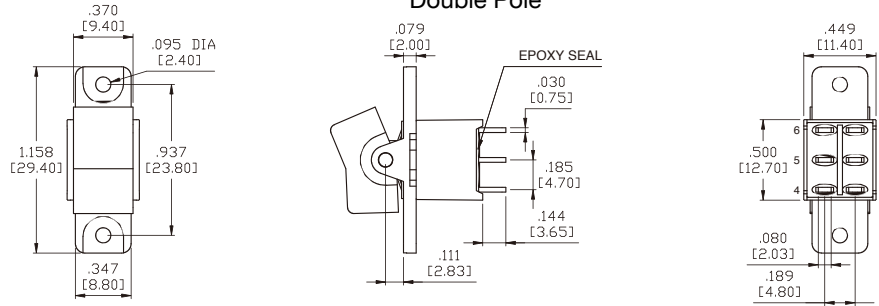
- Tin option not available with M1 and M3 terminals.
- 1 Double-Pole and Four-Pole only. Center position connects 2-3, 5-4, 8-9, 11-10
- 2 Double-Pole only
- 3 Movable contact and terminal platings: silver over copper alloy
- 4 Movable contact platings: gold over nickel over copper alloy
- 5 Terminal platings: gold over nickel over copper alloy
- 6 Terminal platings: tin over copper alloy
- 7 Terminal contact platings: gold over nickel alloy
- 8 Terminal contact platings: silver over nickel alloy

1MS-Series Dimensional Specifications: in. [mm]

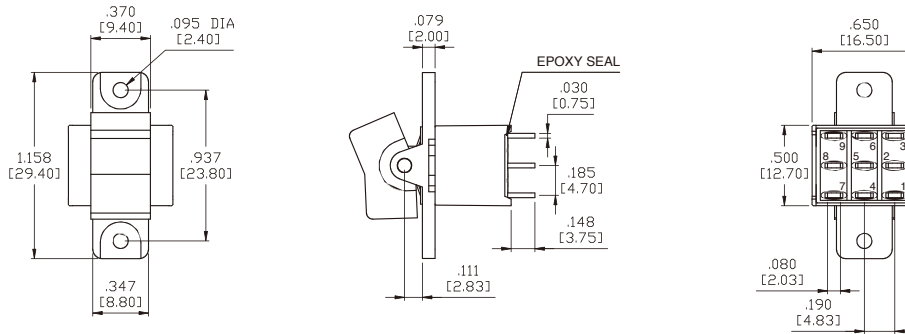
Single Pole



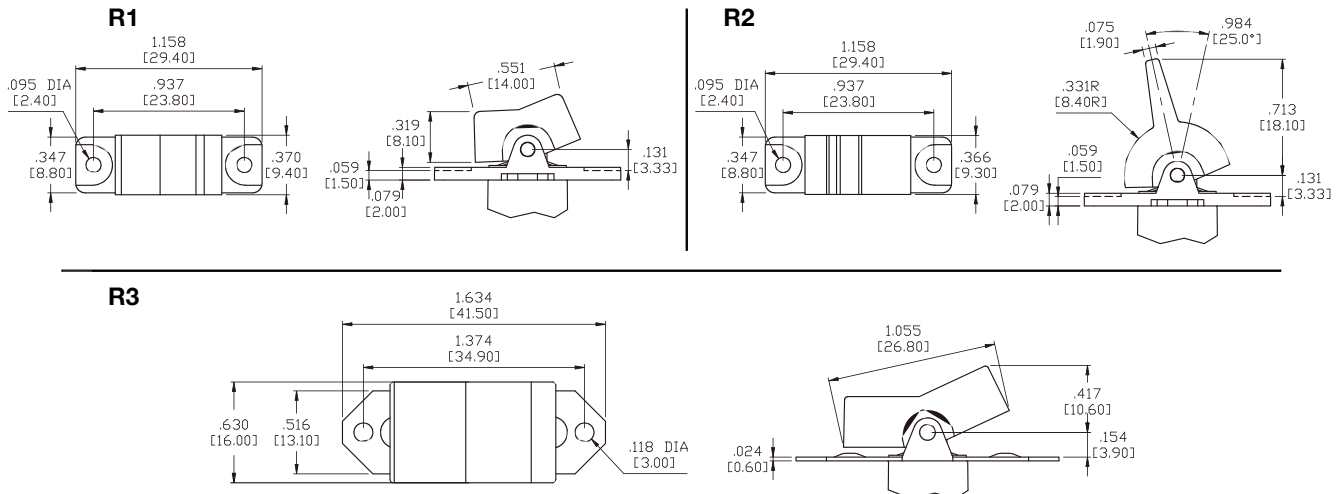
Double Pole



Three Pole



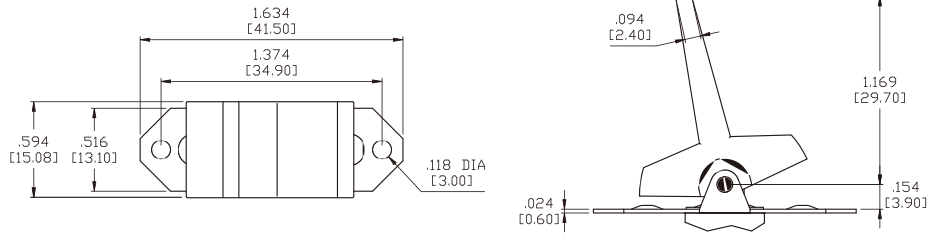
Actuator Options for Panel Rear Mount



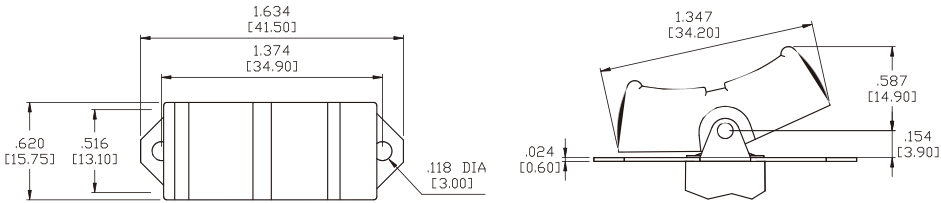
1MS-Series Dimensional Specifications: in. [mm]

Actuator Options for Panel Rear Mount

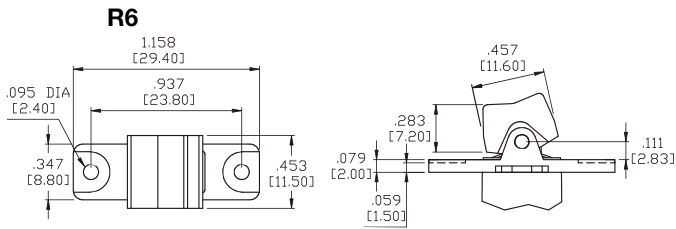
R4



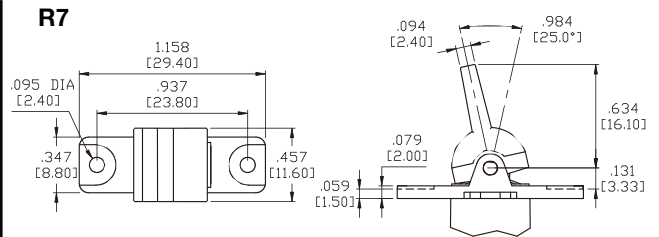
R5



R6

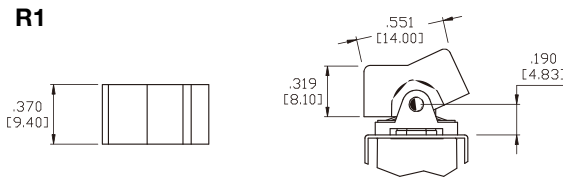


R7

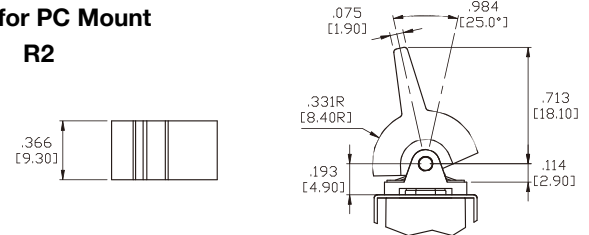


Actuator Options for PC Mount

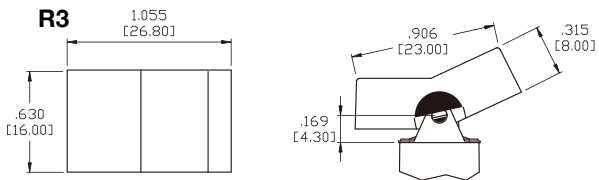
R1



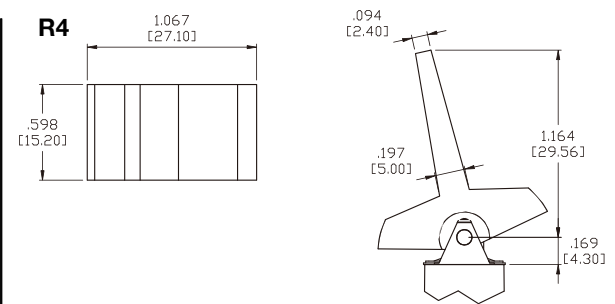
R2



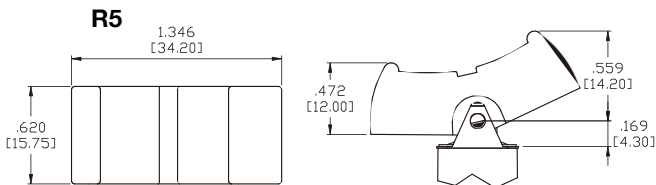
R3



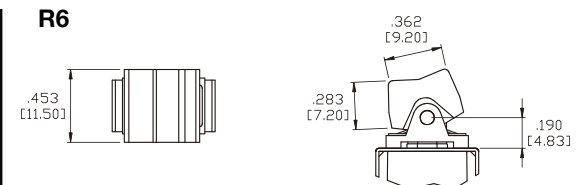
R4



R5



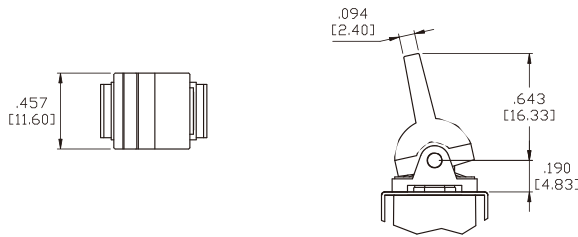
R6



1MS-Series Dimensional Specifications: in. [mm]

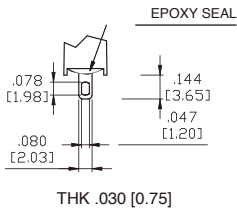
Actuator Options for PC Mount

R7

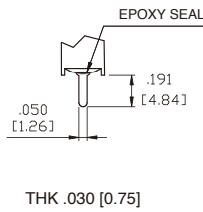


Termination Options

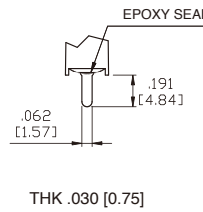
M1 Standard Solder Lug



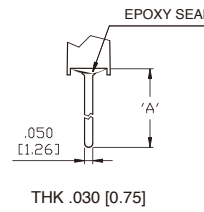
M2 PC Thru-Hole



M3 Quick Connect

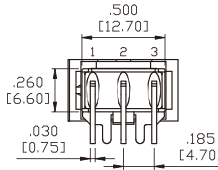
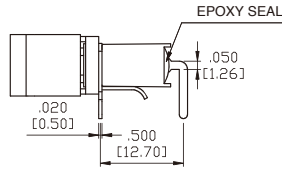
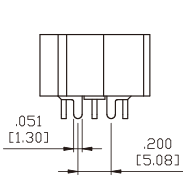


M5 Wire Wrap

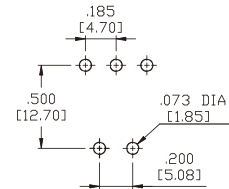


OPTION CODE	DIM. 'A'
M5-1	.711 [18.05]
M5-2	.924 [23.48]
M5-3	.386 [9.80]
M5-4	1.022 [25.97]

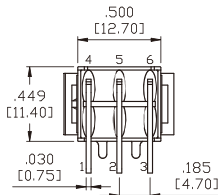
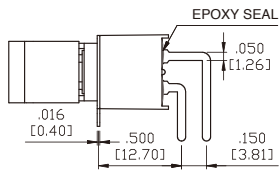
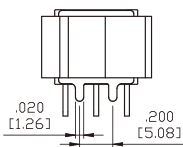
M6 Single Pole



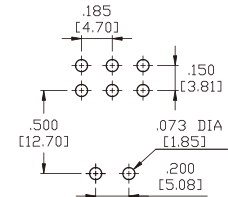
P.C.MOUNTING



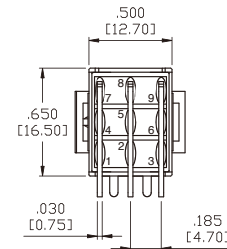
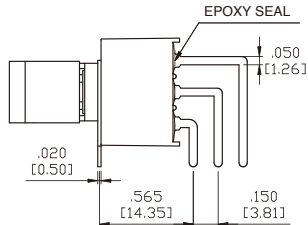
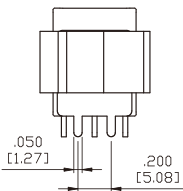
M6 Double Pole



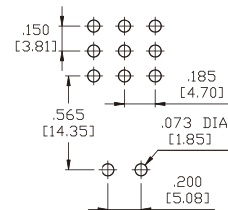
P.C.MOUNTING



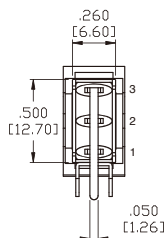
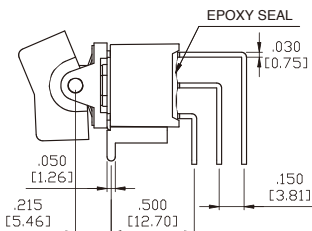
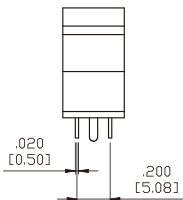
M6 Three Pole



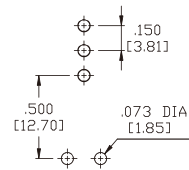
P.C.MOUNTING



M7 Single Pole



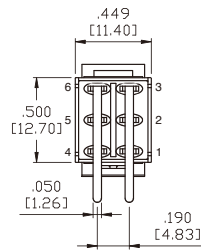
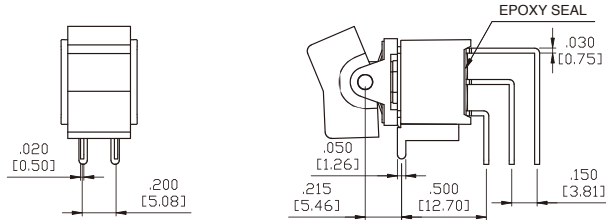
P.C.MOUNTING



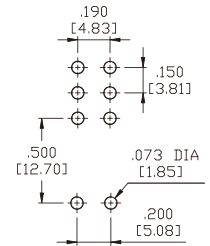
1MS-Series Dimensional Specifications: in. [mm]

Termination Options

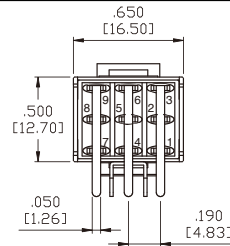
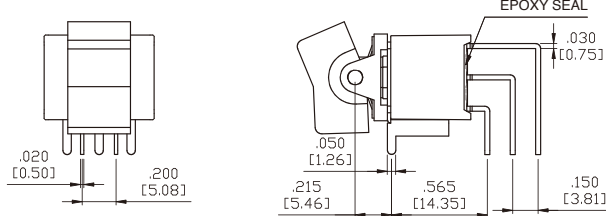
M7 Double Pole



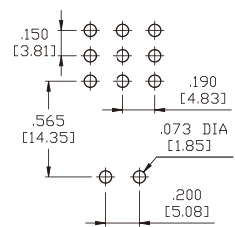
P.C.MOUNTING



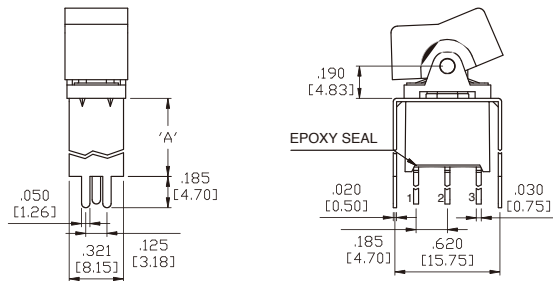
M7 Three Pole



P.C.MOUNTING

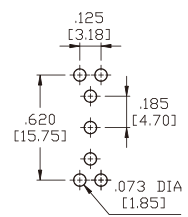


VS2-VS3 Single Pole

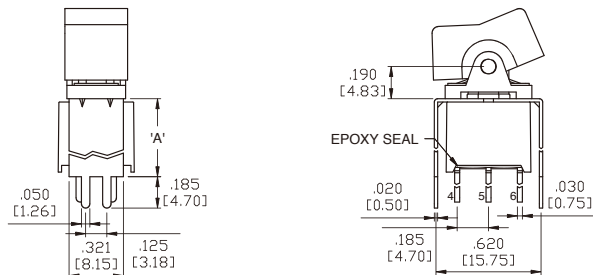


OPTION CODE	DIM.'A'
VS2	.461 [11.70]
VS3	.630 [16.00]

P.C.MOUNTING

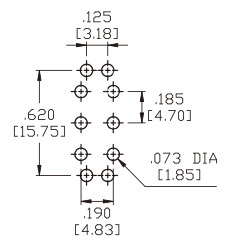


VS2-VS3 Double Pole

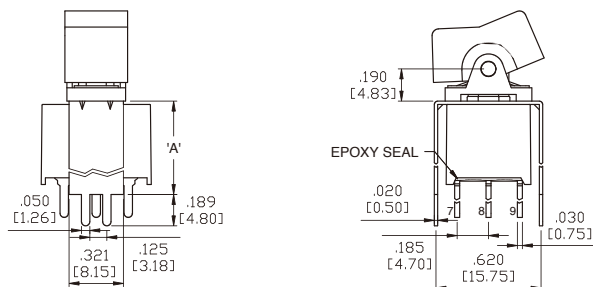


OPTION CODE	DIM.'A'
VS2	.461 [11.70]
VS3	.630 [16.00]

P.C.MOUNTING

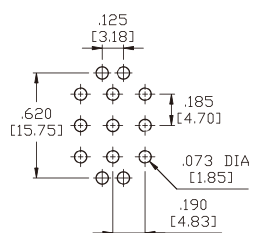


U2-VS3 Three Pole



OPTION CODE	DIM.'A'
U2	.551 [14.00]
VS3	.630 [16.00]

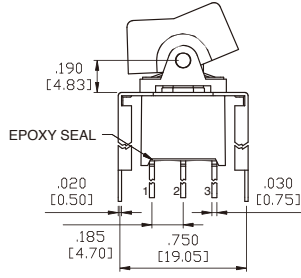
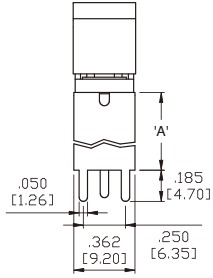
P.C.MOUNTING



1MS-Series Dimensional Specifications: in. [mm]

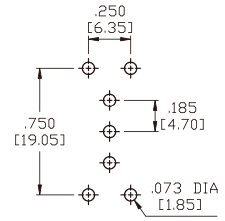
Termination Options

VS4-VS5 Single Pole

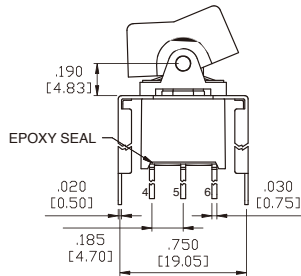
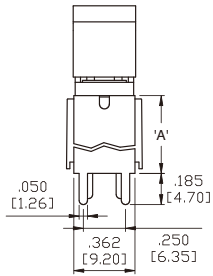


OPTION CODE	DIM.'A'
VS4	.461 [11.70]
VS5	.630 [16.00]

P.C.MOUNTING

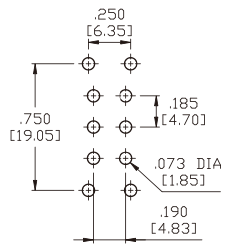


VS4-VS5 Double Pole

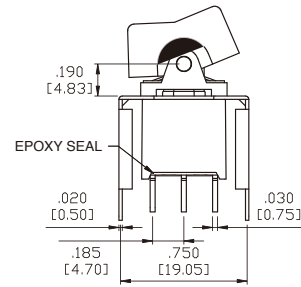
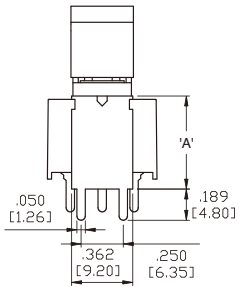


OPTION CODE	DIM.'A'
VS4	.461 [11.70]
VS5	.630 [16.00]

P.C.MOUNTING

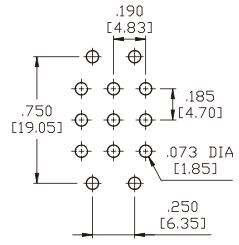


U4-VS5 Three Pole



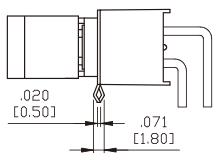
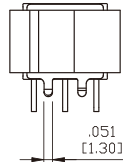
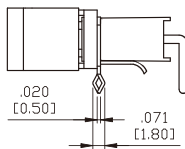
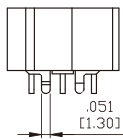
OPTION CODE	DIM.'A'
U4	.551 [14.00]
VS5	.630 [16.00]

P.C.MOUNTING

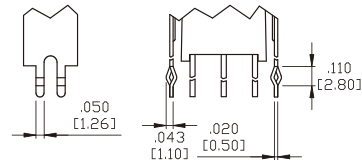


Snap-In Termination Options

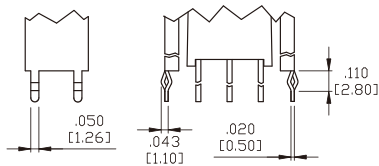
M61



VS21, VS31



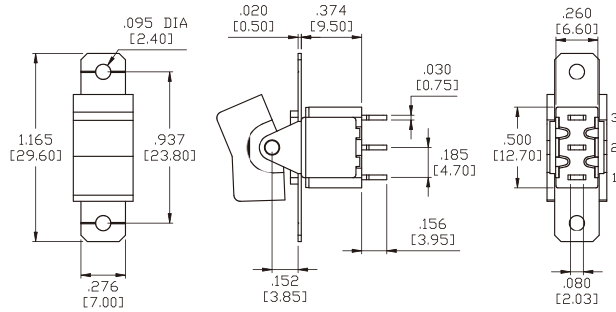
VS41, VS51



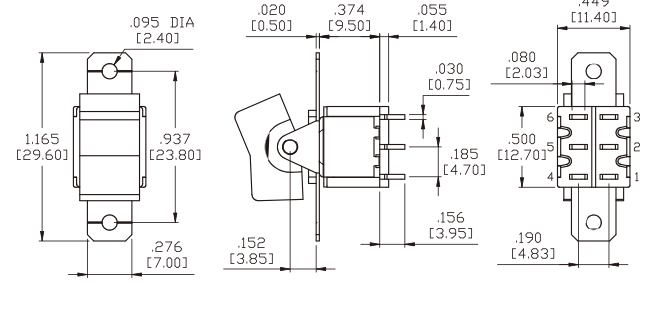
* PC Mounting for M61, M71, VS21, VS31, VS41, VS51 refer to M6, M7, VS2, VS3, VS4, VS5 respectively.

1M1-Series Dimensional Specifications: in. [mm]

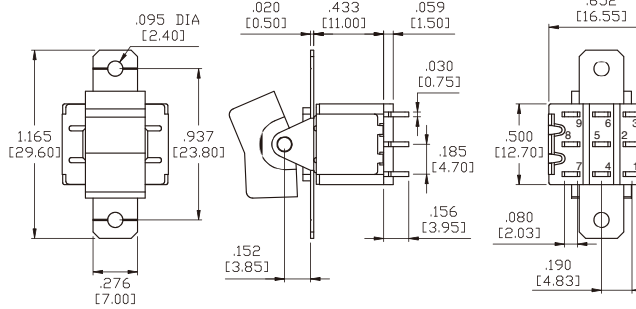
Single Pole



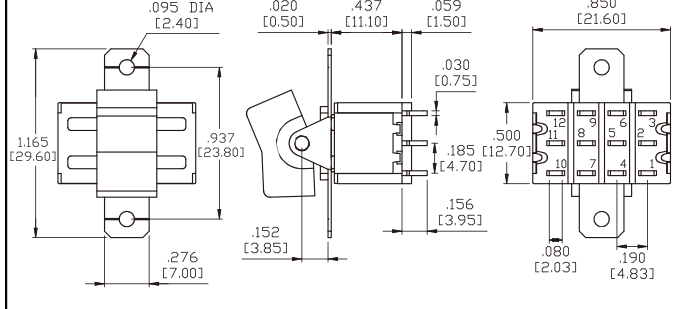
Double Pole



Three Pole

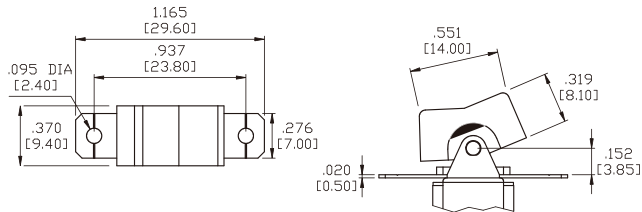


Four Pole

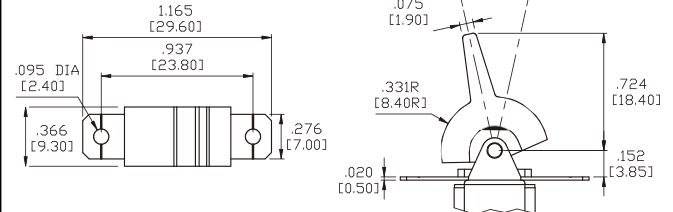


Actuator Options for Panel Rear Mount

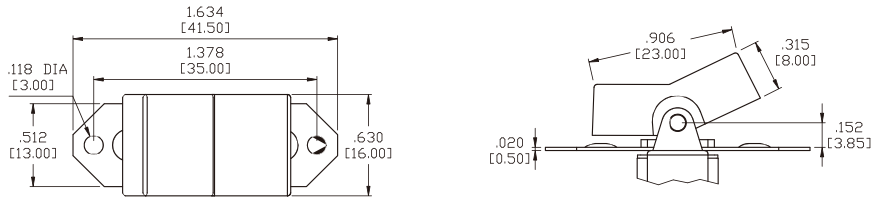
R1



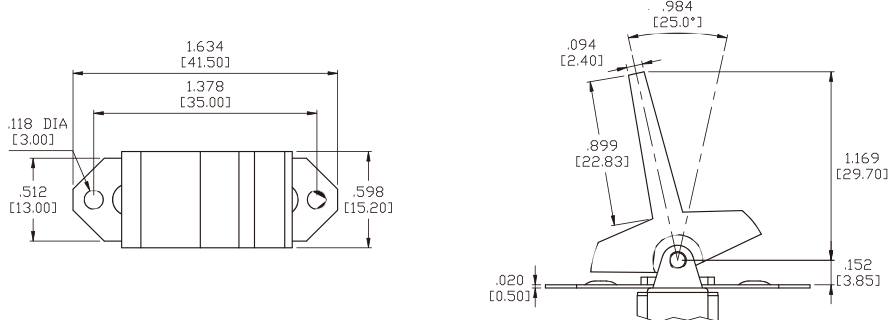
R2



R3



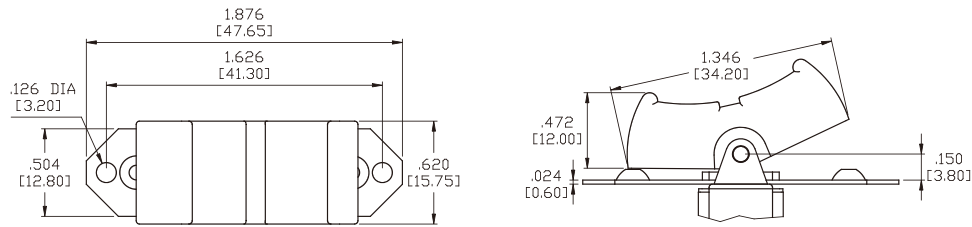
R4



1M1-Series Dimensional Specifications: in. [mm]

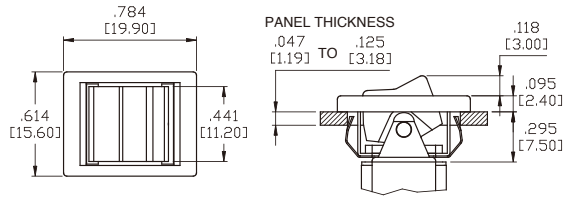
Actuator Options for Panel Rear Mount

R5

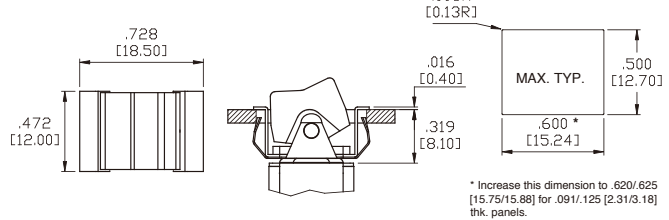


Actuator Options for Snap-In Mount

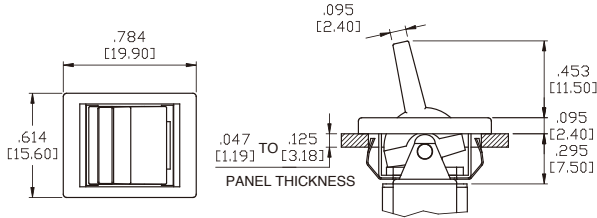
R6



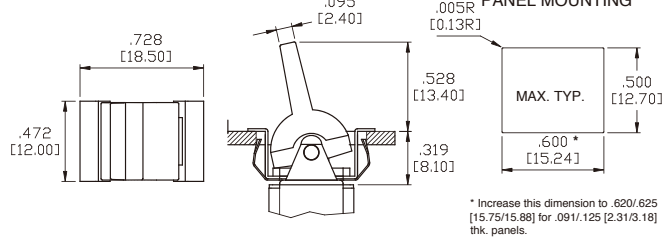
R6 WITHOUT FRAME



R7

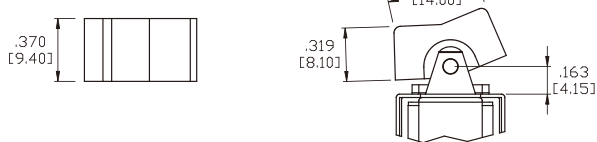


R7 WITHOUT FRAME

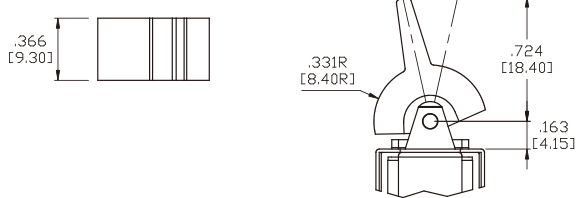


Actuator Options for PC Mount

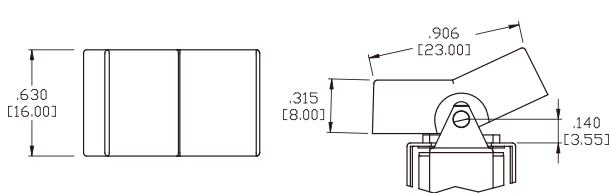
R1



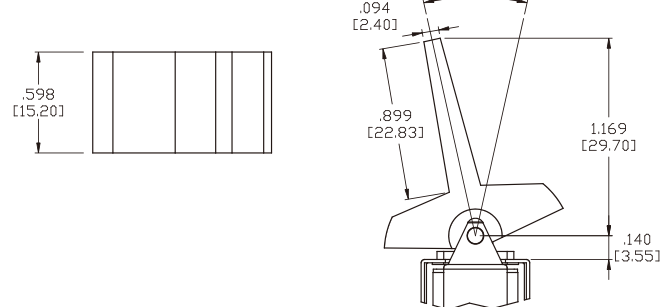
R2



R3

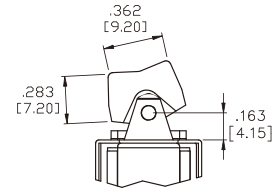
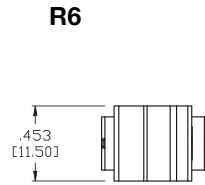
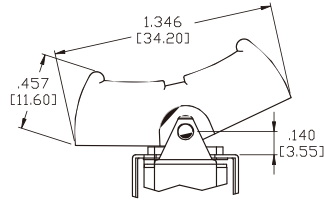
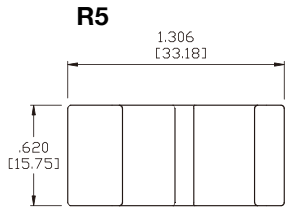


R4

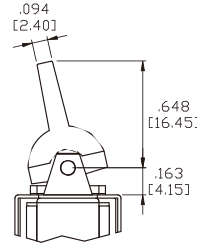


1M1-Series Dimensional Specifications: in. [mm]

Actuator Options for PC Mount

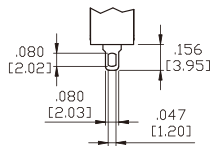


R7



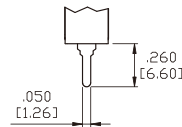
Termination Options

M1 Standard Solder Lug



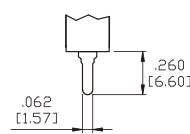
THK .030 [0.75]

M2 PC Thru-Hole



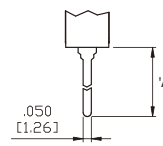
THK .030 [0.75]

M3 Quick Connect



THK .030 [0.75]

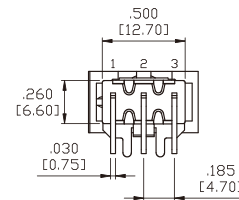
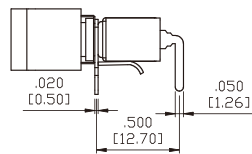
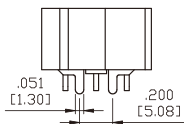
M5 Wire Wrap



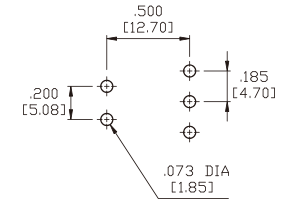
THK .030 [0.75]

OPTION CODE	DIM. 'A'
M5-1	.750 [19.05]
M5-2	.964 [24.48]
M5-3	.425 [10.80]
M5-4	1.062 [26.97]

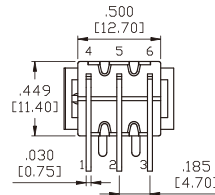
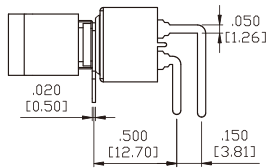
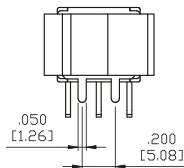
M6 Single Pole



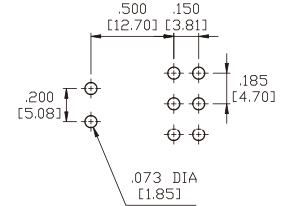
P.C.MOUNTING



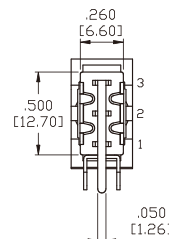
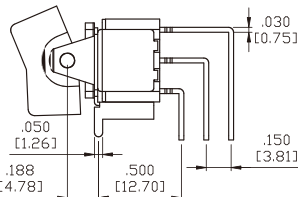
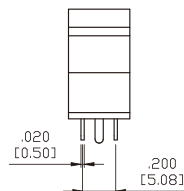
M6 Double Pole



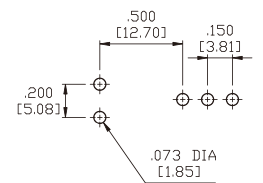
P.C.MOUNTING



M7 Single Pole



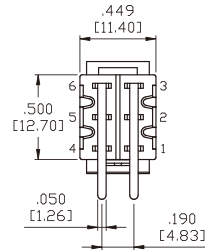
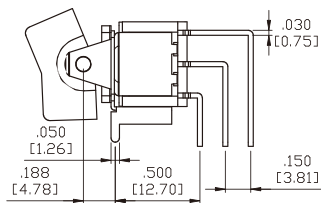
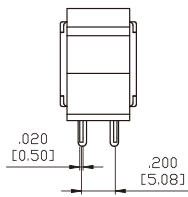
P.C.MOUNTING



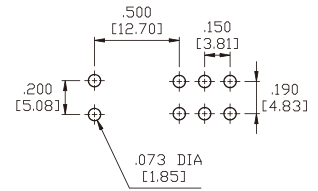
1M1-Series Dimensional Specifications: in. [mm]

Termination Options

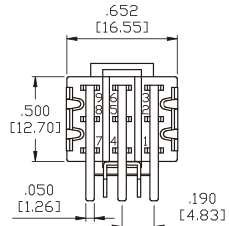
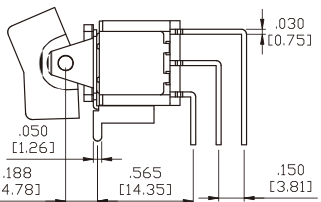
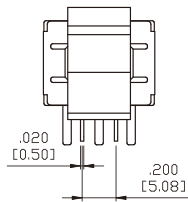
M7 Double Pole



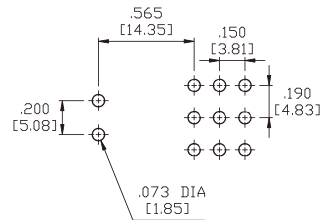
P.C.MOUNTING



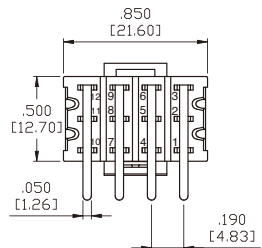
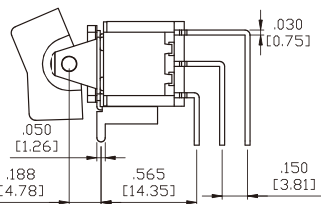
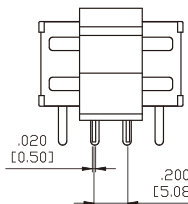
M7 Three Pole



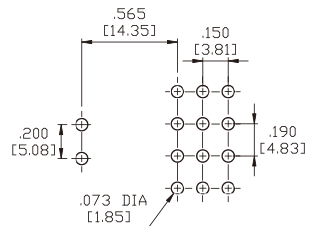
P.C.MOUNTING



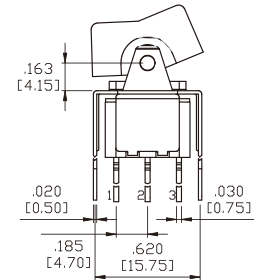
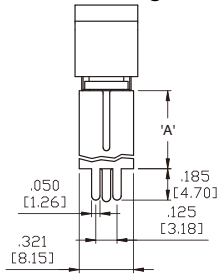
M7 Four Pole



P.C.MOUNTING

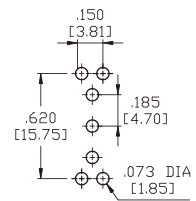


VS2-VS3 Single Pole

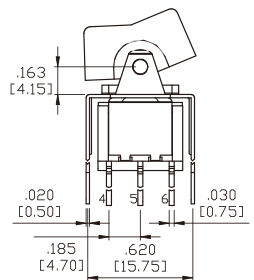
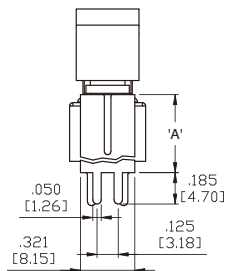


OPTION CODE	DIM.'A'
VS2	.461 [11.70]
VS3	.630 [16.00]

P.C.MOUNTING

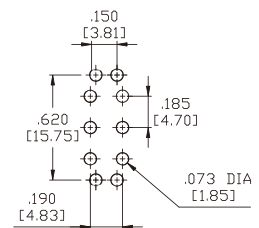


VS2-VS3 Double Pole



OPTION CODE	DIM.'A'
VS2	.461 [11.70]
VS3	.630 [16.00]

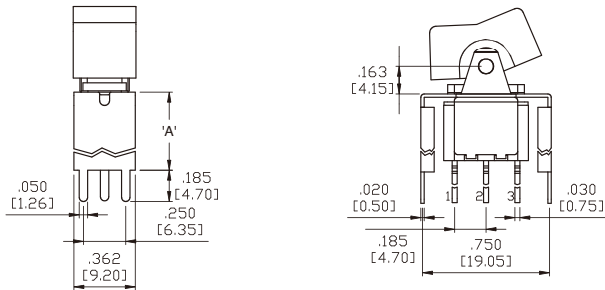
P.C.MOUNTING



1M1-Series Dimensional Specifications: in. [mm]

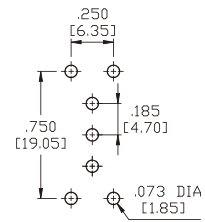
Termination Options

VS4-VS5 Single Pole

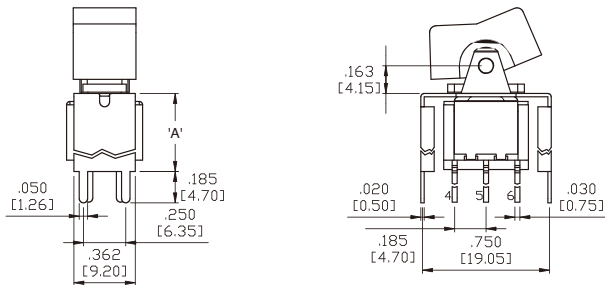


OPTION CODE	DIM. 'A'
VS4	.461 [11.70]
VS5	.630 [16.00]

P.C.MOUNTING

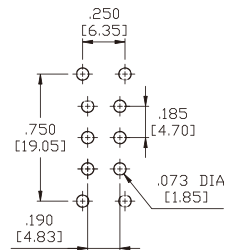


VS4-VS5 Double Pole

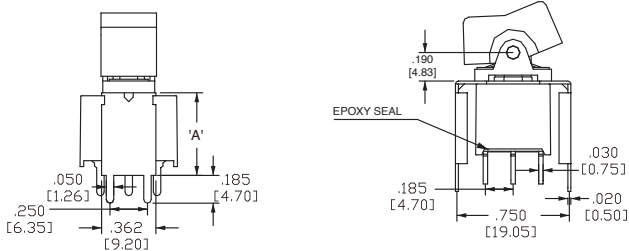


OPTION CODE	DIM. 'A'
VS4	.461 [11.70]
VS5	.630 [16.00]

P.C.MOUNTING

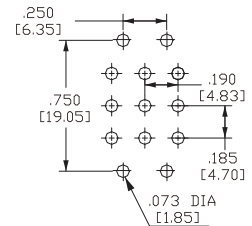


U4-VS5 Three Pole



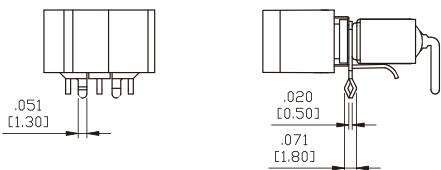
OPTION CODE	DIM. 'A'
U4	.551 [14.00]
VS5	.630 [16.00]

P.C.MOUNTING

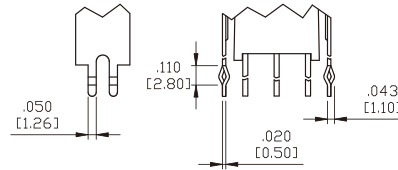


Snap-In Termination Options

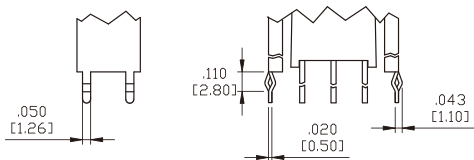
M61



VS21, VS31



VS41, VS51



* PC Mounting for M61, VS21, VS31, VS41, VS51 refer to M6, VS2, VS3, VS4, VS5 respectively.

Authorized Sales Representatives and Distributors

Click on a region of the map below to find your local representatives and distributors or visit www.carlingtech.com/findarep.



About Carling

Founded in 1920, Carling Technologies is a leading manufacturer of electrical and electronic switches and assemblies, circuit breakers, electronic controls, power distribution units, and multiplexed power distribution systems. With four ISO registered manufacturing facilities and technical sales offices worldwide, Carling Technologies Sales, Service and Engineering teams do much more than manufacture electrical components, they engineer powerful solutions! To learn more about Carling please visit www.carlingtech.com/company-profile.

To view all of Carling's environmental, quality, health & safety certifications please visit www.carlingtech.com/environmental-certifications

Worldwide Headquarters

Carling Technologies, Inc.
60 Johnson Avenue, Plainville, CT 06062
Phone: 860.793.9281 **Fax:** 860.793.9231
Email: sales@carlingtech.com

Northern Region Sales Office: nrsm@carlingtech.com
Southeast Region Sales Office: sersm@carlingtech.com
Midwest Region Sales Office: mrrsm@carlingtech.com
West Region Sales Office: wrsm@carlingtech.com
Latin America Sales Office: larsm@carlingtech.com

Asia-Pacific Headquarters

Carling Technologies, Asia-Pacific Ltd.,
Suite 1607, 16/F Tower 2, The Gateway,
Harbour City, 25 Canton Road,
Tsimshatsui, Kowloon, Hong Kong
Phone: Int + 852-2737-2277 **Fax:** Int + 852-2736-9332
Email: sales@carlingtech.com.hk

Shenzhen, China: shenzhen@carlingtech.com
Shanghai, China: shanghai@carlingtech.com
Pune, India: india@carlingtech.com
Kaohsiung, Taiwan: taiwan@carlingtech.com
Yokohama, Japan: japan@carlingtech.com

Europe | Middle East | Africa Headquarters

Carling Technologies LTD
4 Airport Business Park, Exeter Airport,
Clyst Honiton, Exeter, Devon, EX5 2UL, UK
Phone: Int + 44 1392.364422 **Fax:** Int + 44 1392.364477
Email: ltd.sales@carlingtech.com

Germany: gmbh@carlingtech.com
France: sas@carlingtech.com



Carling Technologies®

Innovative Designs. Powerful Solutions.

Mouser Electronics

Authorized Distributor

Click to View Pricing, Inventory, Delivery & Lifecycle Information:

[Carling Technologies:](#)

[1M1-DP1-R7/2-2M1QE](#) [1M1-SP2-R2/3-3VS3QE](#)