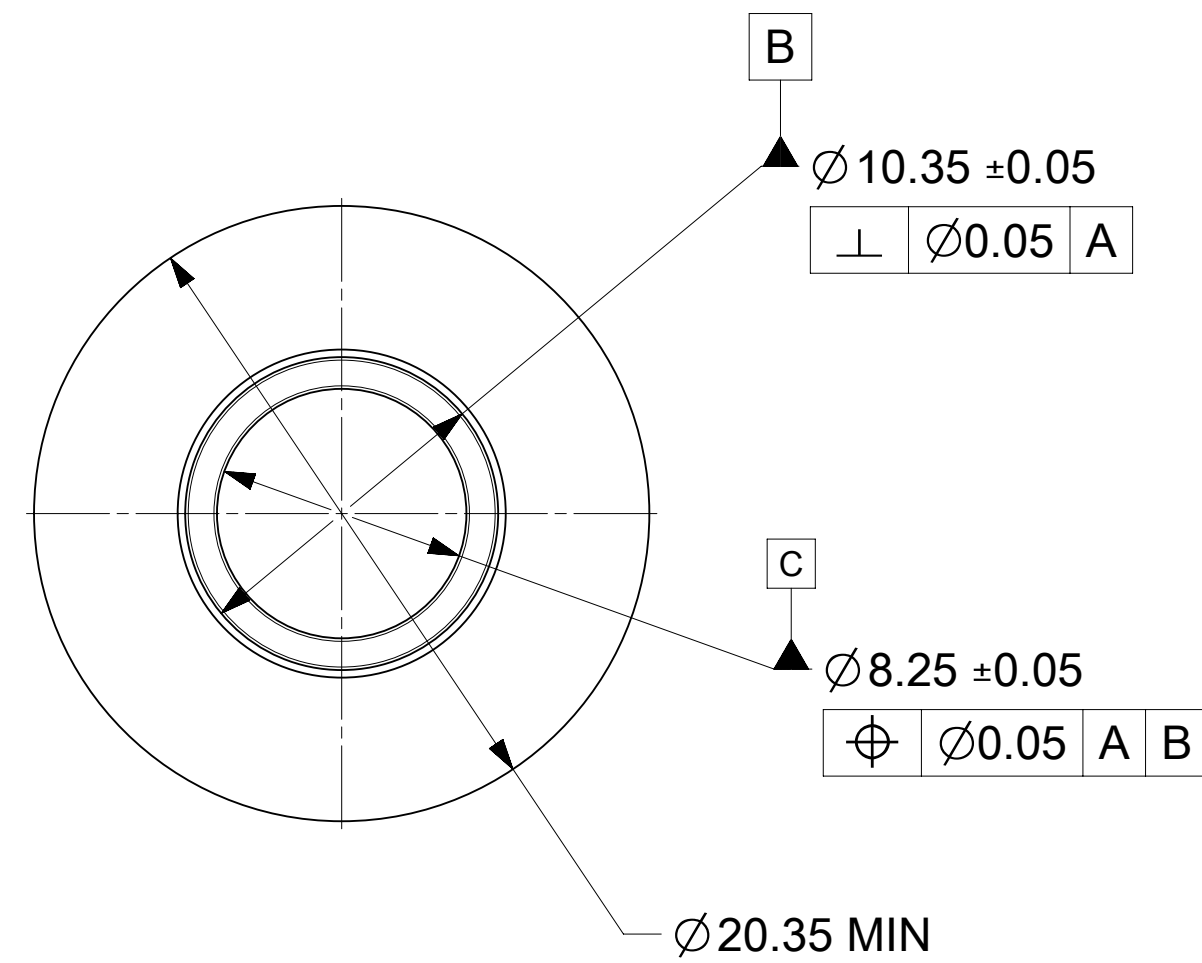
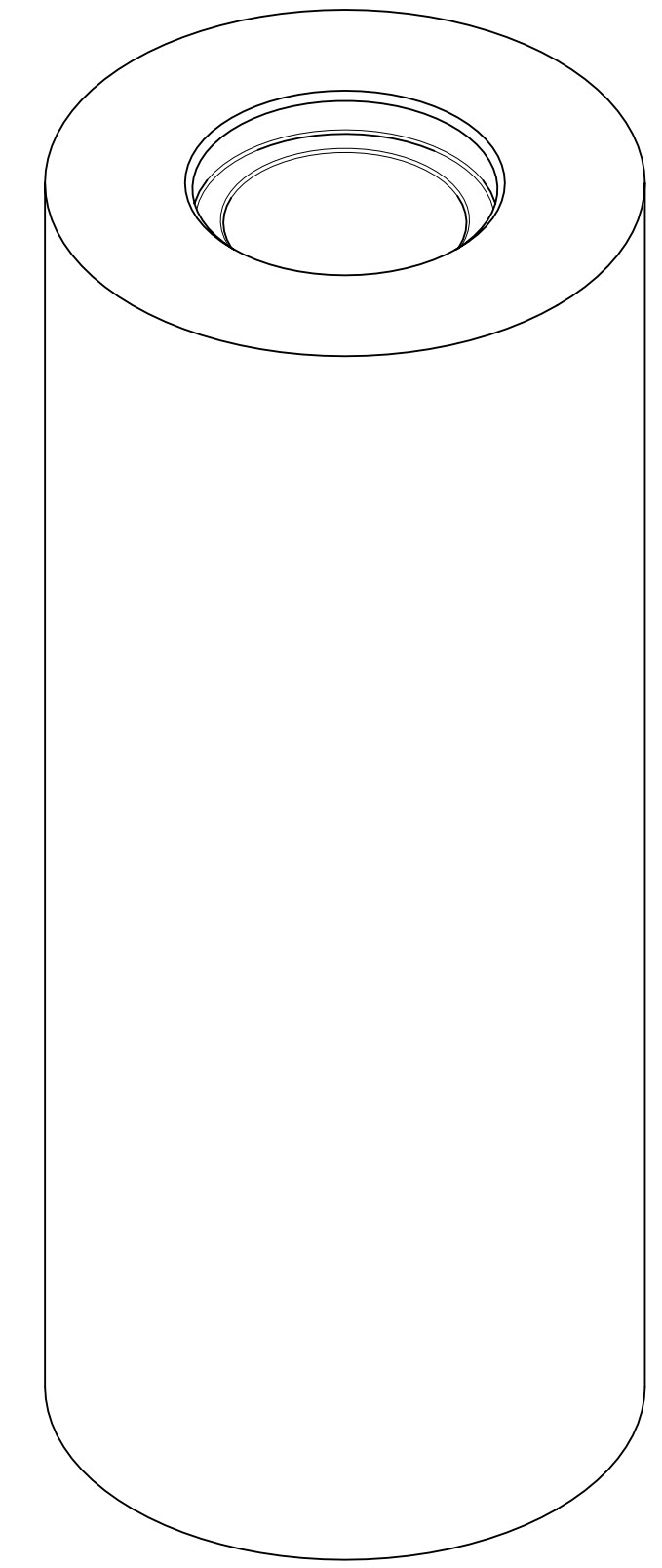
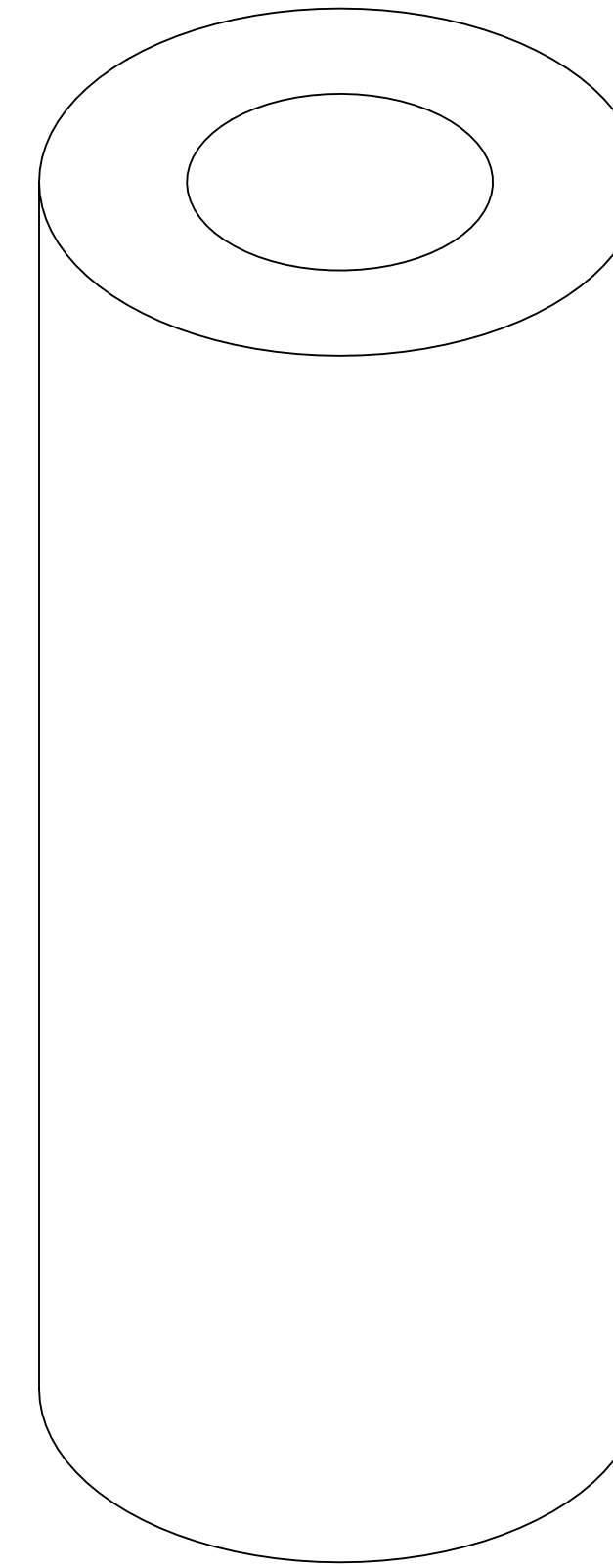
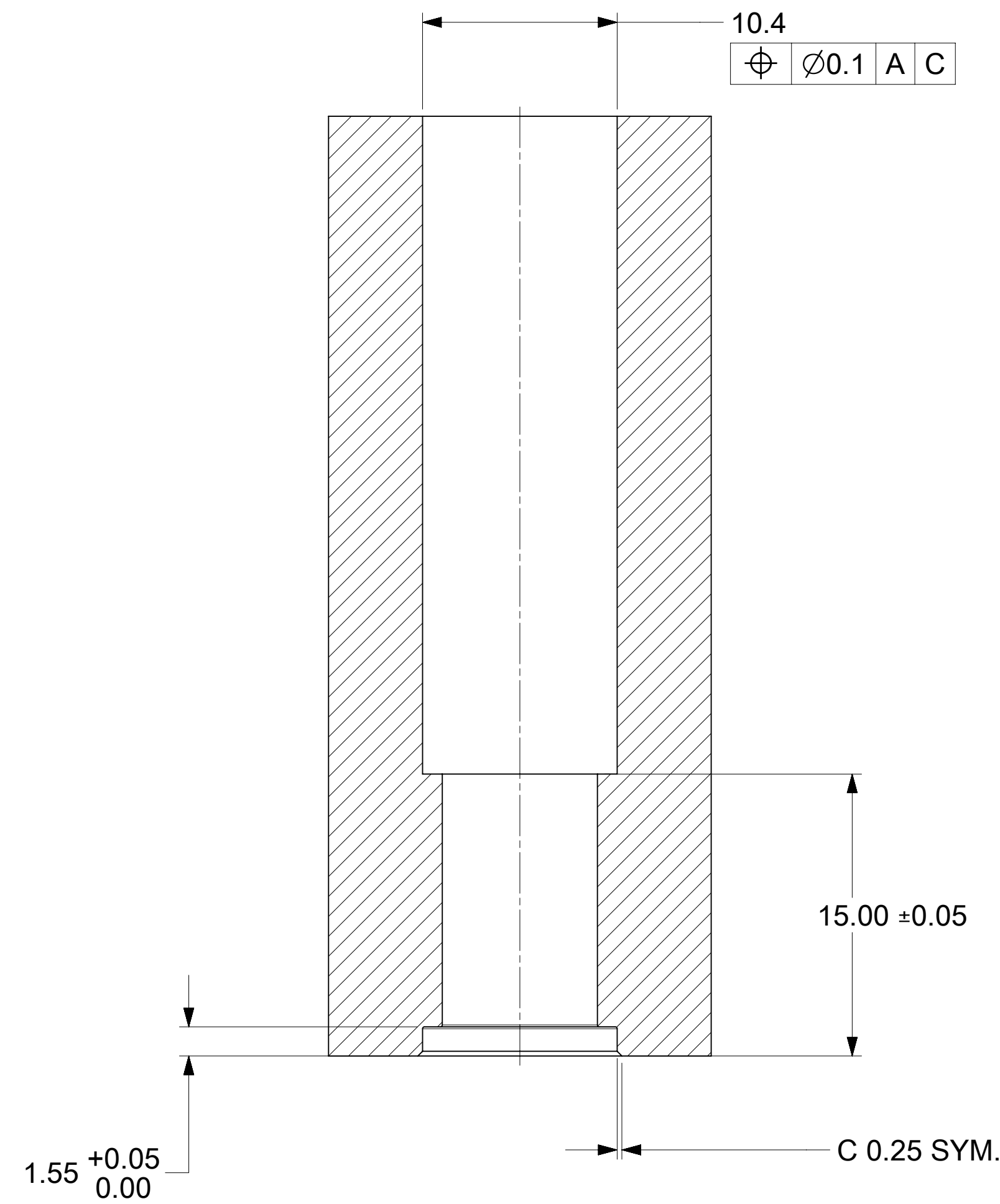
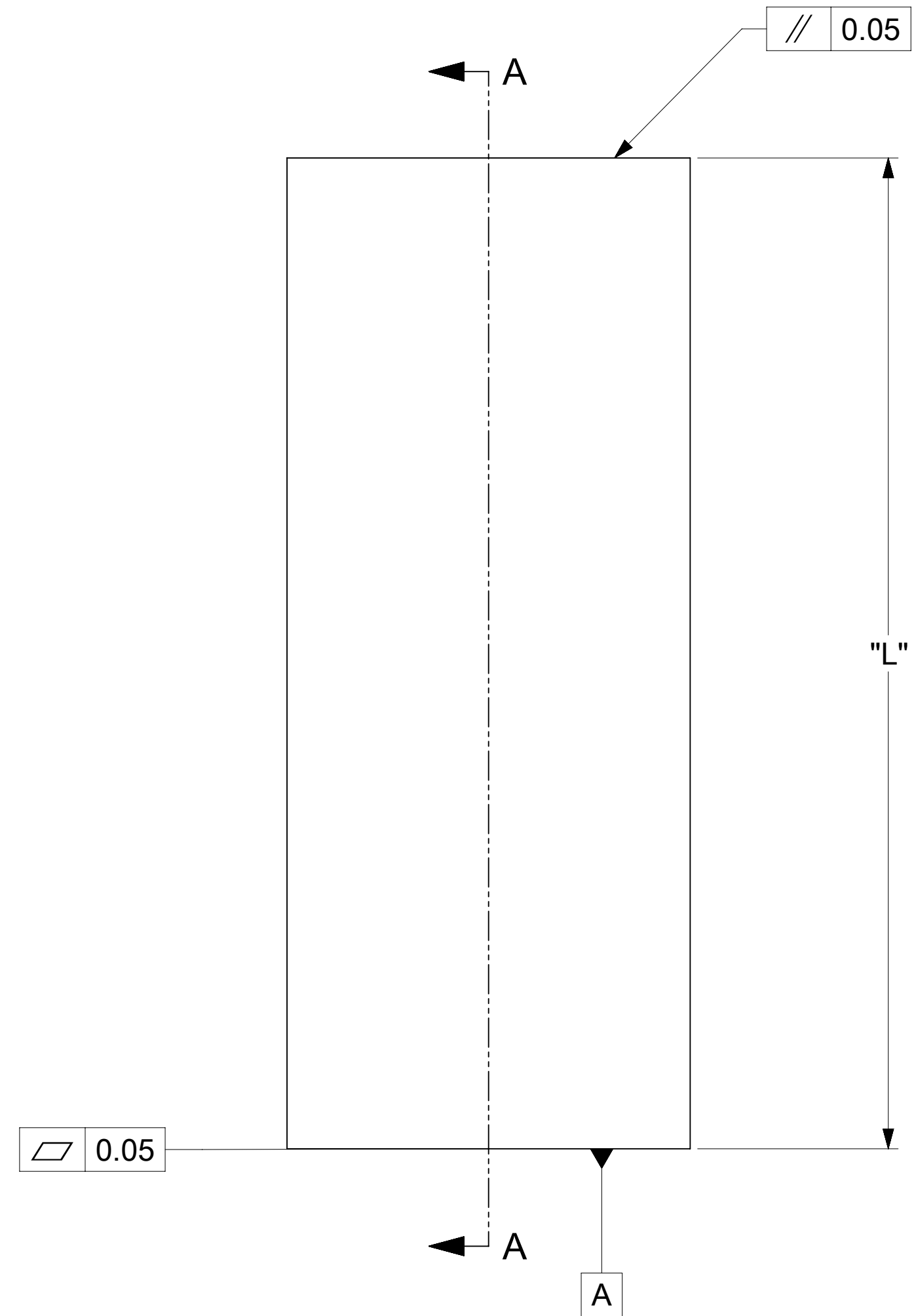


PIN LENGTH RANGE IN MM	DIMENSION "L" IN MM
UPTO 20	25.0
20-30	35.0
30-40	45.0
40-50	55.0



- NOTES:
 1. MATERIAL: STAINLESS STEEL
 2. BREAK ALL SHARP CORNERS AND EDGES

THIS DRAWING CONTAINS INFORMATION THAT IS PROPRIETARY TO MOLEX ELECTRONIC TECHNOLOGIES, LLC AND SHOULD NOT BE USED WITHOUT WRITTEN PERMISSION															
DIMENSION UNITS mm		SCALE 4:1		CURRENT REV DESC: UPDATED THE DRAWING SHEET											
GENERAL TOLERANCES (UNLESS SPECIFIED)				EC NO: 784031											
ANGULAR TOL ± 0.5°				4 PLACES ±		DRWN: SOURAJ		2024/02/13		CENTRALITY APPLICATION TOOLING FOR 8.0MM PIN PRODUCT CUSTOMER DRAWING					
3 PLACES ±				2 PLACES ± 0.05		CHK'D: SCS02		2024/05/21							
1 PLACE ± 0.1				0 PLACES ±		APPR: HTHYAGARAJ		2024/05/22		DOCUMENT NUMBER					
DRAFT WHERE APPLICABLE MUST REMAIN WITHIN DIMENSIONS				THIRD ANGLE PROJECTION		DRAWING		SERIES		MATERIAL NUMBER		CUSTOMER		SHEET NUMBER	
						D-SIZE		219259		2192590008		GENERAL MARKET		1 OF 1	