



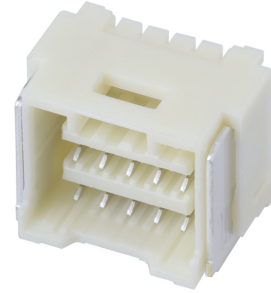
Part Number : [5031481090](#)

Product Description : 1.50mm Pitch, CLIK-Mate PCB Receptacle, Dual Row, Surface Mount, Right-Angle, Tin Plating, Positive Lock, 10 Circuits, Natural

Series Number : 503148

Status : Active

Product Category : PCB Headers and Receptacles



Documents & Resources

Drawings

[Drawing 5031481090_sd.pdf](#)

3D Models and Design Files

[2D Drawing DXF 5031481090.dxf](#)

[2D Drawing DXF \(PDF\) 5031481090.pdf](#)

[3D Model 5031481090_stp.zip](#)

Specifications

[Application Specification AS-503149-001-001.pdf](#)

[Packaging Specification SPK-503148-001-001.pdf](#)

[Product Specification 5031491001-PS-000.pdf](#)

Product Environment Compliance

Compliance

GADSL/IMDS	Compliant with Exemption 44; 33; 34
China RoHS	
EU ELV	Not Relevant
Low-Halogen Status	Not Low-Halogen per IEC 61249-2-21
REACH SVHC	Not Contained per D(2024)4144-DC (27 June 2024)
EU RoHS	Compliant per EU 2015/863

[Multiple Part Product Compliance Statements](#)

- Eu RoHS

- REACH SVHC

- Low-Halogen

Multiple Part Industry Compliance Documents

- IPC 1752A Class C

- IPC 1752A Class D

- Molex Product Compliance Declaration

- IEC-62474

- chemSHERPA (xml)

EU RoHS Certificate of Compliance

Part Details

General

Status	Active
Category	PCB Headers and Receptacles
Series	503148
Description	1.50mm Pitch, CLIK-Mate PCB Receptacle, Dual Row, Surface Mount, Right-Angle, Tin Plating, Positive Lock, 10 Circuits, Natural
Application	Signal, Wire-to-Board
Component Type	PCB Receptacle
Product Family	CLIK-Mate Wire-to-Board Connectors
Product Name	CLIK-Mate
UPC	883906560843

Electrical

Current - Maximum per Contact	1.0A
Voltage - Maximum	100V

Physical

Circuits (Loaded)	10
Circuits (maximum)	10
Color - Resin	Natural
Durability (mating cycles max)	30
Glow-Wire Capable	No
Keying to Mating Part	None

Lock to Mating Part	Yes
Mated Height	9.20mm
Material - Metal	Copper Alloy
Material - Plating Mating	Tin
Material - Plating Termination	Tin
Material - Resin	Polyamide
Number of Rows	2
Orientation	Right Angle
Packaging Type	Embossed Tape on Reel
PCB Locator	No
PCB Retention	Yes
PCB Thickness - Recommended	1.20mm, 1.70mm
Pitch - Mating Interface	1.50mm
Pitch - Termination Interface	0.75mm
Polarized to Mating Part	Yes
Polarized to PCB	No
Robotic Placement	Vacuum Pick-Up Area
Stackable	No
Temperature Range - Operating	-40° to +105°C
Termination Interface Style	Surface Mount

Mates With / Use With

Mates with Part(s)

Description	Part Number
1.50mm Pitch CLIK-Mate Dual Row Plug Housings	<u>503149</u>