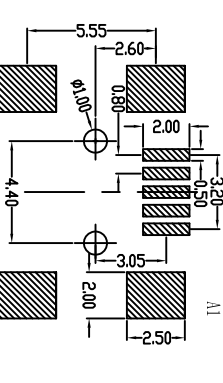
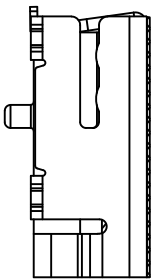
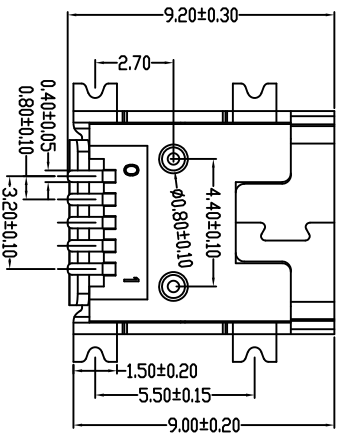
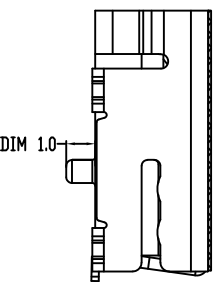
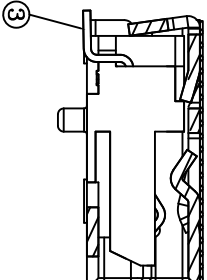
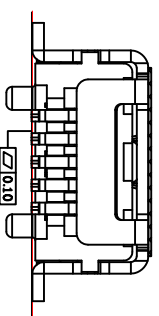


GT-USB-2201

G-Switch
USB系列
系列编码



Recommended PCB Layout



③	CONTACT	5	PHOSPHOR BRONZE	GOLD FLASH/3u"/15u"/30u" T=0.25mm
②	HOUSING	1	LCP	UL94V-0 BK
①	SHELL	1	BRASS/SPCC	NICKE PLATING T=0.40mm
ITEM	PART NAME	Q'TY/PCS	MATERIALS	NOTE



G-Switch Electronic (Hongkong) CO., Ltd.

Unless otherwise specified, Tolerance:	DESIGN	陈锋 2016.05.29	TITLE:
X	CHECKED	DATE	GT-USB-2201
X.X	APPROVED	DATE	
X.XX	http://www.dg-switch.com		
X.XXX	TEL: 0769-82388879		
Angles	REV: X1	SCALE: 4:1	UNIT: mm
	SIZE: A4	SHEET: 1/1	

G-SWITCH SPECIFICATIONS
 VOLTAGE RATING: AC 30V
 CURRENT RATING: AC 1A CONTACT RESISTANCE
 TERMINAL: 30mm^{±0.1} MAX
 DIELECTRIC WITHSTANDING VOLTAGE: 100V AC MIN
 INSULATION RESISTANCE: 100M^{±0.1} MIN
 INSERTION FORCE: 3.5KG^{±0.1} MAX
 EXTRACTION FORCE: 0.7KG^{±0.1} MIN INITIAL
 Service life: 5000times above
 HOUSING: LCP OR NY6T
 CONTACT: PHOSPHOR BRONZE
 CONTACT PLATED: GOLD FLASH/3u"/15u"/30u"
 SHELL: BRASS/SPCC
 SHELL PLATED: NICKEL PLATING
 PRODUCT (LEAD FREE) ACCORD WITH ROHS