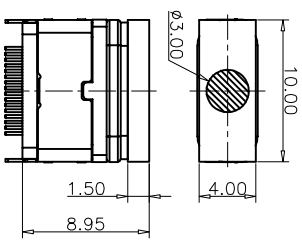
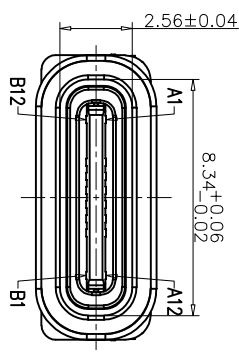
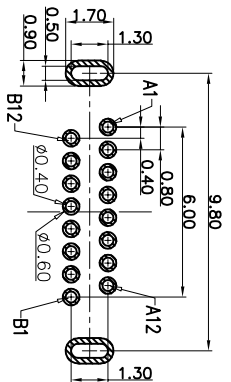




REV.	ECN NO.	DESCRIPTION	DATE	DESIGN



装前塞示意图



RECOMMEND P.C.B LAYOUT  
TOLERANCE UNSPECIFIED ±0.05mm

- NOTES:
- SPECIFICATION:
- CURRENT RATING: 3.0 A
  - VOLTAGE RATING: 3.0 V
  - VBUS & GND PINS AND OTHER PINS: 40mΩ/PIN MAX SHIELD: 50mΩ/MAX
  - LCR MAX: CHANGE OF ALL PINS: 100m
  - INSULATION RESISTANCE: 100MΩ MIN
  - DIELECTRIC WITHSTAND VOLTAGE AC 100V FOR 1MINUTE
  - INSERTION FORCE: 0.5~2.0kgf
  - UNMATING FORCE: 0.8~2.0kgf
  - DURABILITY: 10000 CYCLES
  - OPERATING TEMPERATURE: -35°C~+85°C
  - THE PEAK TEMPERATURE ON THE BOARD SHALL BE MAINTAINED FOR 10 SECONDS AT 210~230°C
  - WATERPROOF: IP-X7.

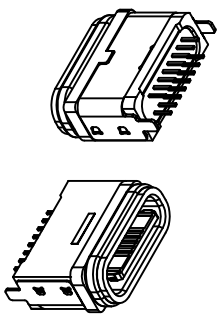
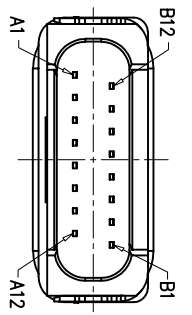
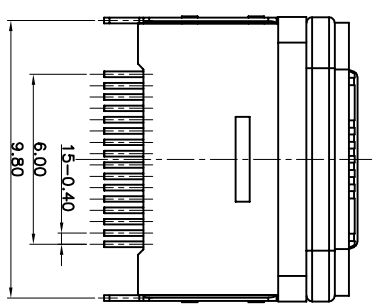
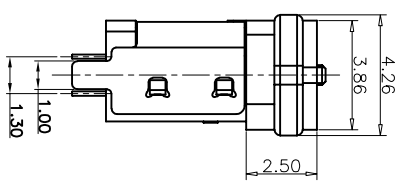
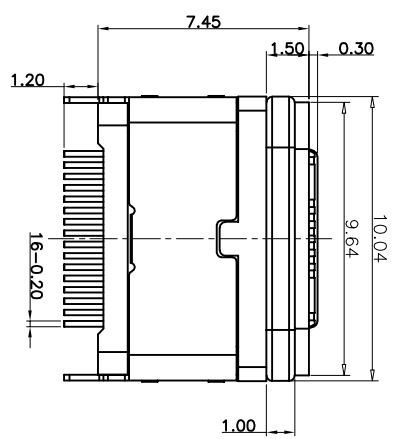


TABLE:

NO	PART	QTY	Material
1	SHELL	1	ZINC ALLOC,Ni30u"Min PLATED
2	CONTACT	16	C7025,TIN80u"/Au3u"/Ni30u"PLATED
3	MID PLATE	1	SUS301,NO PLATING
4	HOUSING	1	LCP(E130J) UL94 V-0 BLACK
5	WATERPROOF RING	1	SILICONE(S)/60-65A) UL94 V-0 BLACK

TOLERANCE		NAME(INTENDED USE)	
X.X ±0.30	X.X' ±10'	CUSTOMER DRAWING	
XX ±0.20	X' ± 8'	PART NO.	
.XXX ±0.10	.XX' ± 5'	FY23-010TC161F3745-01	
UNITS	mm	DESIGN:	ZXM
MATERILA	---	CHED:	---
FINISH	---	APPD:	---
DRAWG NO.		TITLE:	
FY23-010TC161F3745-01		TYPE C 16P防水母座立插7.45	
SCALE		SHEET	
1:1		1/2	
REV.		REV.	
A		A	

