

TYPICAL INDICATOR ORDERING EXAMPLE

LB 01 G W01 — 5C 12 — JC

Shapes

01	Square
02	Round
03	Rectangular

Housing

K	Black
G	Gray

Terminals

W01	Silver Solder Lug/ Quick Connect Terminals
-----	--

Lamps

Incandescent Lamp Used with Solid Cap

05	5-volt
12	12-volt

Incandescent or Neon Used with Insert Cap

01	110-volt Neon
05	5-volt Incandescent
12	12-volt Incandescent

Bright LED Used with LED Cap

Colors		Resistor	
5C	Red	No Code	No Resistor
5D	Amber	05	5-volt
5F	Green	12	12-volt
		24	24-volt

Super Bright LED Used with LED Cap

6B	White
6F	Green
6G	Blue

Cap Types & Colors

Solid Cap: Lens/Filter Colors

BJ	White/Clear
CJ	Red/Clear
EJ	Yellow/Clear
FJ	Green/Clear
GJ	Blue/Clear

Insert Cap: Lens/Filter Colors

JB	Clear/White
JC	Clear/Red
JE	Clear/Yellow
*JF	Clear/Green
*JG	Clear/Blue

*JF & JG not suitable with neon.

LED Cap: Lens/Diffuser Colors

JB	Clear/White
JC	Clear/Red
JD	Clear/Amber
JF	Clear/Green

LED Cap: Lens/Diffuser Colors

JB	Clear/White
----	-------------

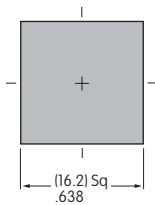
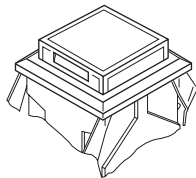
DESCRIPTION FOR TYPICAL ORDERING EXAMPLE

LB01GW01-5C12-JC

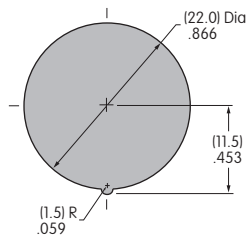
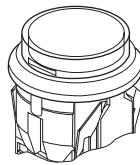


SHAPES & PANEL CUTOUTS

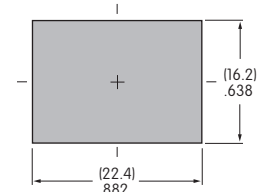
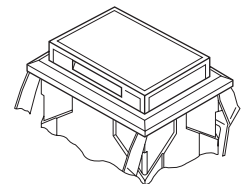
01 .622" (15.8mm)
Square



02 .854" (21.7mm)
Round



03 .622" x .866" (15.8mm x 22.0mm)
Rectangular



Panel Thickness: .039" ~ .157" (1.0 ~ 4.0mm)

HOUSING

Housing Colors Available:



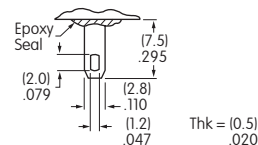
Black



Gray


TERMINALS

W01 Silver Solder Lug/.110" (2.8mm) Quick Connect




LAMP CODES & SPECIFICATIONS

Incandescent Lamp for Solid Colored and Colored Insert Caps

AT607  T-1 Bi-pin		05	12	
	Voltage	V	5V AC	12V AC
	Current	I	115mA	60mA
	Endurance	Hours	10,000 average	
	Ambient Temp. Range		-25°C ~ +50°C	

Neon Lamp for Colored Insert Cap

AT607N  T-1 Bi-pin		01	
	Voltage	V	110V AC
	Current	I	1.5mA
	Endurance	Hours	10,000 average
	Ambient Temp. Range		-25°C ~ +50°C
	Recommended Resistors: 33K ohms for 110V AC; 100K ohms for 220V AC		

The electrical specifications shown are determined at a basic temperature of 25°C.



Toggles
Rocker
Pushbuttons
Illuminated PB
Programmable
Keylocks
Rotaries
Slides
Tactiles
Tilt
Touch
Accessories
Supplement




LED COLORS & SPECIFICATIONS

The electrical specifications shown are determined at a basic temperature of 25°C. Polarity marks are on the device.
 If the source voltage exceeds the rated voltage, a ballast resistor is required.
 The resistor value can be calculated by using the formula in the Supplement section.
 Additional lamp detail is shown in the Accessories & Hardware section.

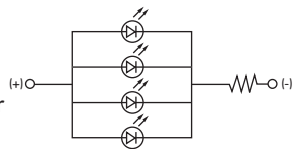
Bright LED without Resistor

AT635 LEDs are colored in OFF state.   T-1½ Bi-pin	Color Codes	Red 5C	Amber 5D	Green 5F	No Code No Resistor
	Maximum Forward Current	I_{FM}			30mA
	Typical Forward Current	I_F			20mA
	Forward Voltage	V_F			1.9V
	Maximum Reverse Voltage	V_{RM}			5V
	Current Reduction Rate Above 25°C	ΔI_F			0.42mA/°C
	Ambient Temperature Range	-25° ~ +50°C			

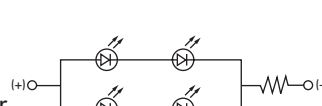
Bright LED with Resistor

AT627 with Resistor  T-1 Bi-pin	Color Codes:	Red 5C	Amber 5D	Green 5F	Resistor Codes		
	Maximum Forward Current	I_{FM}			05	12	24
	Typical Forward Current	I_F			52mA	26mA	13mA
	Forward Voltage	V_F			5V	12V	24V
	Maximum Reverse Voltage	V_{RM}			4V	8V	16V
	Current Reduction Rate Above 25°C	ΔI_F			0.50mA/°C		
	Ambient Temperature Range	-25° ~ +50°C					

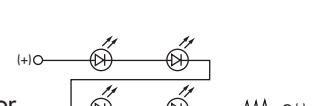
AT627
5-volt
4-element
with Resistor






AT627
12-volt
4-element
with Resistor



AT627
24-volt
4-element
with Resistor



Super Bright Single Element LED

AT625G Blue AT631B White AT632F Green   T-1 Bi-pin				6B	6F	6G	
	Color	White	Green	Blue			
	Maximum Forward Current	I_{FM}			30mA	30mA	30mA
	Typical Forward Current	I_F			20mA	20mA	20mA
	Forward Voltage	V_F			3.3V	3.3V	3.3V
	Maximum Reverse Voltage	V_{RM}			7V	7V	7V
	Current Reduction Rate Above 25°C	ΔI_F			0.40mA/°C	0.40mA/°C	0.40mA/°C
Ambient Temperature Range	-25° ~ +50°C						

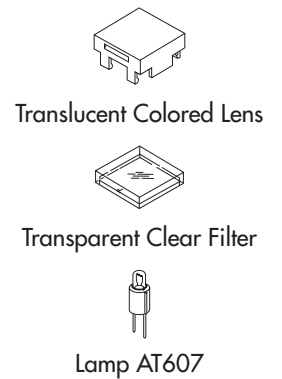
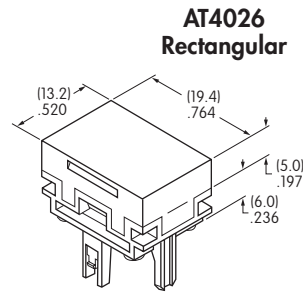
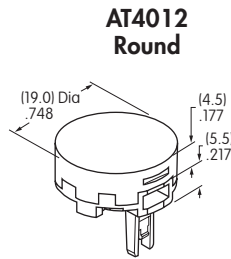
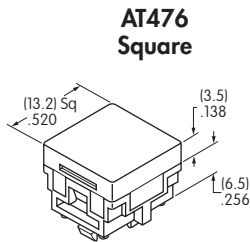
CAP TYPES & COLOR COMBINATIONS

Color Codes: B White C Red D Amber E Yellow F Green G Blue J Clear

Solid Cap for Incandescent Lamp

Lens/Filter Colors Available:

- BJ FJ
- CJ GJ
- EJ

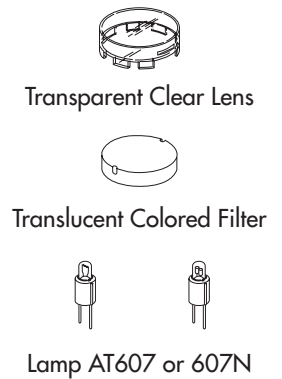
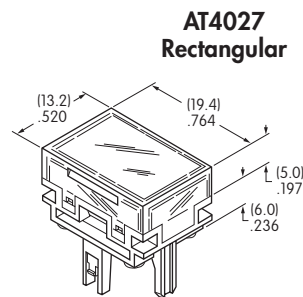
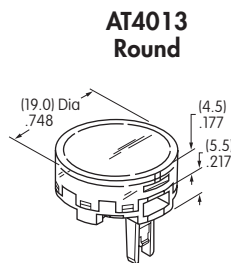
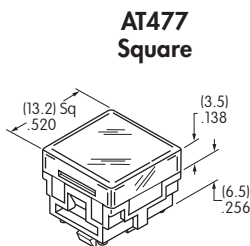


Material: Polycarbonate Finish: Glossy

Insert Cap for Incandescent or Neon Lamp

Lens/Filter Colors Available:

- JB JF
- JC JG
- JE



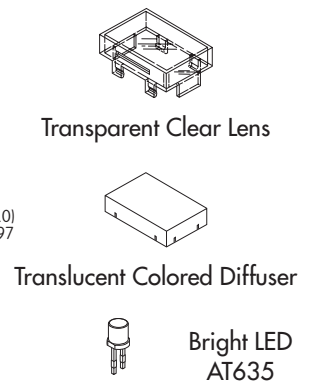
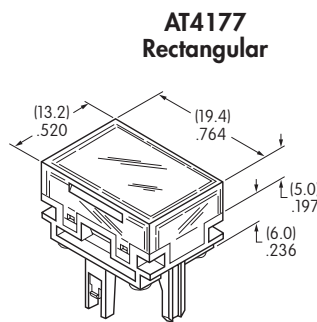
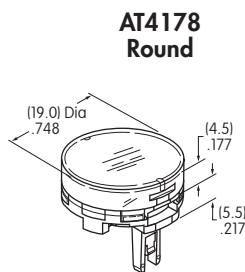
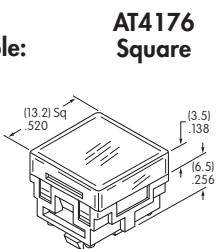
JF and JG not suitable with neon lamp.

Material: Polycarbonate Finish: Glossy

Cap for Bright LED without Resistor

Lens/Diffuser Colors Available:

- JB
- JC
- JD
- JF

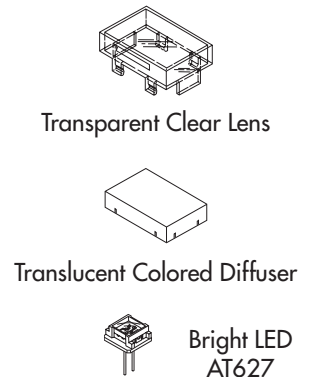
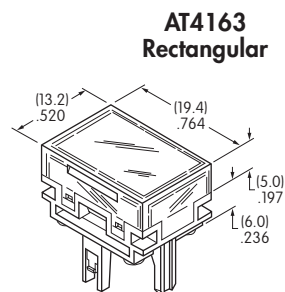
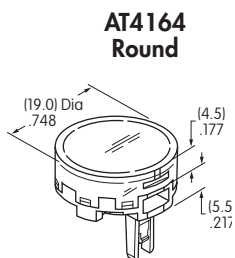
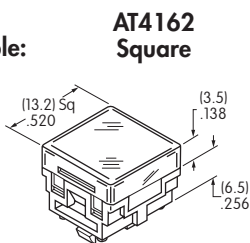


Material: Polycarbonate Finish: Glossy

Cap for Bright LED with Resistor

Lens/Diffuser Colors Available:

- JB
- JC
- JD
- JF



Material: Polycarbonate Finish: Glossy

CAP TYPES & COLOR COMBINATIONS

Cap for Super Bright LEDs

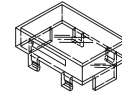


Clear Lens
White Diffuser

AT4129
Square

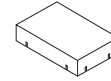
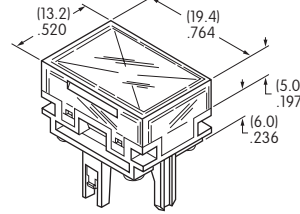
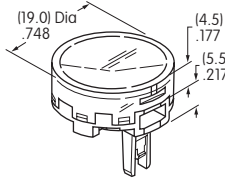
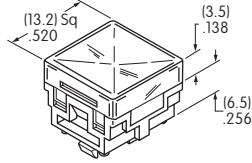
AT4128
Round

AT4130
Rectangular



Transparent
Clear Lens

Material:
Polycarbonate
Finish: Glossy



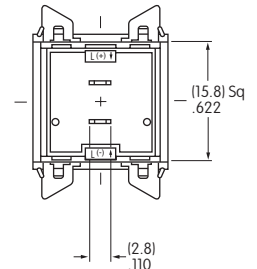
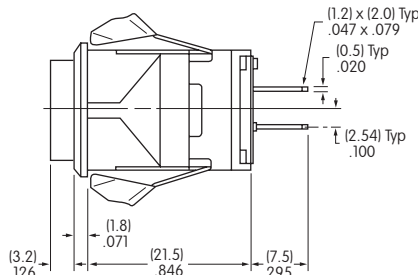
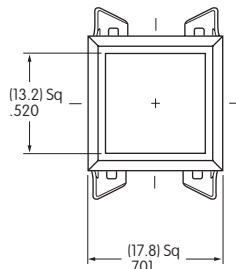
Translucent
White Diffuser



LEDs AT625
AT631 AT632

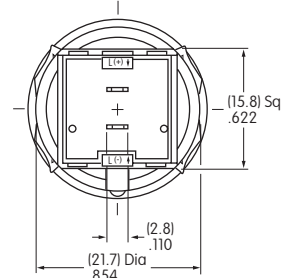
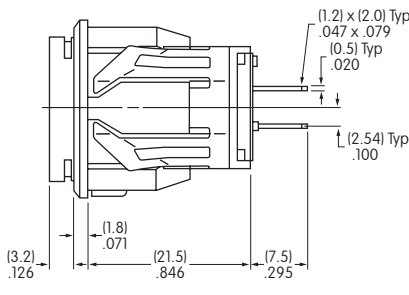
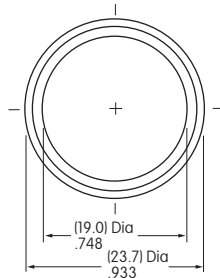
TYPICAL INDICATOR DIMENSIONS

Square



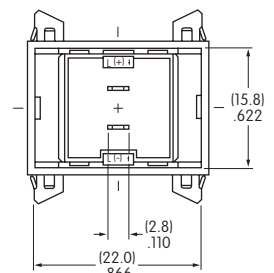
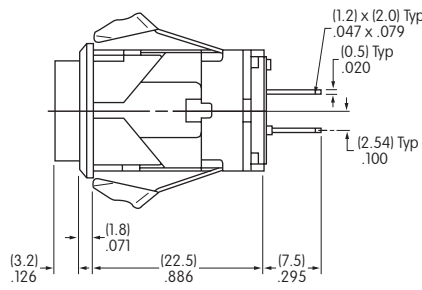
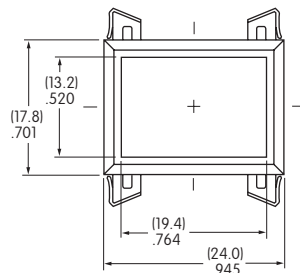
LB01KW01-12-CJ

Round



LB02KW01-12-CJ

Rectangular



LB03KW01-12-CJ

Mouser Electronics

Authorized Distributor

Click to View Pricing, Inventory, Delivery & Lifecycle Information:

NKK Switches:

[LB01KW01-05-FJ](#) [LB01KW01-5F05-JF](#) [LB03KW01-5D24-JD](#) [LB01KW01-5C05-JC](#) [LB01KW01-5C-JC](#) [LB01KW01-6F-JB](#) [LB01KW01-6G-JB](#) [LB02KW01](#) [LB02KW01-5C12-JC](#) [LB02KW01-5D24-JD](#) [LB02KW01-5F24-JF](#) [LB02KW01-6B-JB](#) [LB02KW01-6G-JB](#) [LB03GW01](#) [LB03GW01-6G-JB](#) [LB03KW01](#) [LB03KW01-5C24-JC](#) [LB03KW01-6F-JB](#) [LB03KW01-6G-JB](#) [LB01KW01-5F24-JF-RO](#) [LB01KW01-5C24-JC-RO](#) [LB01GW01](#) [LB01KW01-12-FJ](#) [LB01KW01-12-JF](#) [LB01KW01-5C12-JB](#) [LB01KW01-5D-JB](#) [LB01KW01-5F12-JB](#) [LB02GW01](#) [LB02GW01-5C24-JC](#) [LB02GW01-5D24-JD](#) [LB02GW01-5F24-JF](#) [LB02KW01-5C05-JC](#) [LB02KW01-5D24-JD-RO](#) [LB03KW01-5C05-JC](#) [LB01KW01-6B-JB](#) [LB03KW01-12-CJ](#) [LB03GW01-01-JB](#) [LB03GW01-5C12-JC](#) [LB03GW01-5F12-JF](#) [LB01KW01-12-CJ](#) [LB01KW01-5C05-JB](#) [LB01KW01-5D24-JB](#) [LB01KW01-5F24-JB](#) [LB01KW01-05-GJ](#) [LB01GW01-12-GJ](#) [LB01GW01-5D24-JB](#) [LB01GW01-5F24-JF](#) [LB01KW01-05-JC](#) [LB02GW01-12-FJ](#) [LB03KW01-5D12-JD](#) [LB03KW01-01-JC](#) [LB03KW01-05-BJ](#) [LB01KW01-5F05-JB](#) [LB02GW01-5F05-JB](#) [LB02KW01-5F05-JB](#) [LB02KW01-5F12-JF](#) [LB01KW01-12-GJ](#) [LB02KW01-12-GJ](#) [LB02KW01-6F-JB](#) [LB02KW01-5C-JC](#) [LB02GW01-01-JB](#) [LB03KW01-01-JB](#) [LB02KW01-05-JF](#) [LB02KW01-12-BJ](#) [LB03KW01-5D12-JB](#) [LB01GW01-12-FJ](#) [LB01GW01-5C24-JB](#) [LB03KW01-05-FJ](#) [LB01GW01-05-JF](#) [LB02KW01-5C12-JB](#) [LB01KW01-5D-JD](#) [LB01GW01-12-CJ](#) [LB02KW01-5D-JD](#) [LB03KW01-5D-JB](#) [LB01GW01-5F-JF](#) [LB02KW01-05-FJ](#) [LB03KW01-5F24-JF](#) [LB01GW01-5C05-JB](#) [LB03KW01-05-JC](#) [LB01GW01-5C-JC](#) [LB01GW01-05-CJ](#) [LB02KW01-01-JC](#) [LB02GW01-01-JE](#) [LB03KW01-5F12-JB](#) [LB03KW01-12-JC](#) [LB03KW01-01-JE](#) [LB03KW01-12-EJ](#) [LB01KW01-28-EJ](#) [LB03KW01-5F-JB](#) [LB03KW01-5F05-JB](#) [LB03KW01-12-BJ](#) [LB01KW01-5C24-JB](#) [LB03KW01-5D-JD](#) [LB01GW01-5D-JD](#) [LB02KW01-5F-JF](#) [LB03KW01-5C-JB](#) [LB03GW01-28-BJ](#) [LB01KW01-01-JC](#) [LB02GW01-01-JC](#)