

COAXIAL

Adapter, SMA-M to SMA-M **SM-SM50+**

50Ω DC to 18 GHz

FEATURES

- Flat response
- Excellent VSWR, 1.10:1 typ. up to 12.4 GHz and 1.15:1 typ. up to 18 GHz
- Low cost adapters, available from stock
- Rugged stainless steel body

APPLICATIONS

- Interconnection of RF cables and equipment



Generic photo used for illustration purposes only

Model No.	SM-SM50+
Case Style	DJ951
Connectors	SMA-M to SMA-M

+RoHS Compliant

The +Suffix identifies RoHS Compliance. See our web site for RoHS Compliance methodologies and qualifications

ELECTRICAL SPECIFICATIONS AT 25°C

Parameter	Frequency (GHz)	Min.	Typ.	Max.	Units
Frequency Range		DC		18	GHz
Insertion Loss	DC - 18	—	0.05	—	dB
VSWR	DC - 8	—	—	1.12	:1
	DC - 12.4	—	—	1.30	
	DC - 18	—	—	1.40	

MAXIMUM RATINGS

Parameter	Ratings
Operating temperature	-55°C to 100°C
Storage temperature	-55°C to 100°C

Permanent damage may occur if any of these limits are exceeded.

REV. F
ECO-012138
SF-SM50+
MCL NY
220221

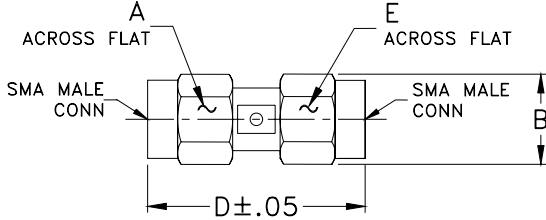




COAXIAL

Adapter, SMA-M to SMA-M SM-SM50+

OUTLINE DRAWING

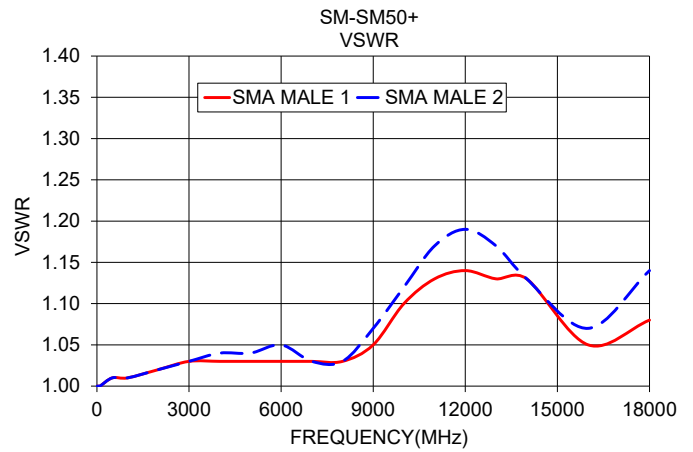
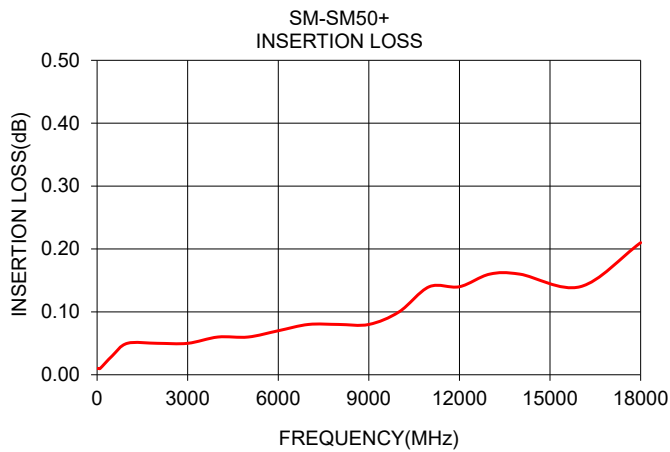


OUTLINE DIMENSIONS (Inch/mm)

A	B	C	D	E	wt
.312	.36	--	.87	.312	grams
7.92	9.14	--	22.10	7.92	4.8

TYPICAL PERFORMANCE DATA

Frequency (MHz)	Insertion Loss (dB)	VSWR (:1)	
		SMA-MALE	SMA-MALE
10	0.01	1.00	1.00
50	0.01	1.00	1.00
100	0.01	1.00	1.00
500	0.03	1.01	1.01
1000	0.05	1.01	1.01
2000	0.05	1.02	1.02
3000	0.05	1.03	1.03
4000	0.06	1.03	1.04
5000	0.06	1.03	1.04
6000	0.07	1.03	1.05
7000	0.08	1.03	1.03
8000	0.08	1.03	1.03
9000	0.08	1.05	1.07
10000	0.10	1.10	1.12
11000	0.14	1.13	1.17
12000	0.14	1.14	1.19
13000	0.16	1.13	1.17
14000	0.16	1.13	1.13
16000	0.14	1.05	1.07
18000	0.21	1.08	1.14



- NOTES**
- A. Performance and quality attributes and conditions not expressly stated in this specification document are intended to be excluded and do not form a part of this specification document.
 - B. Electrical specifications and performance data contained in this specification document are based on Mini-Circuit's applicable established test performance criteria and measurement instructions.
 - C. The parts covered by this specification document are subject to Mini-Circuits standard limited warranty and terms and conditions (collectively, "Standard Terms"); Purchasers of this part are entitled to the rights and benefits contained therein. For a full statement of the standard. Terms and the exclusive rights and remedies thereunder, please visit Mini-Circuits' website at www.minicircuits.com/MCLStore/terms.jsp



Adapter, SMA-Male to SMA-Male

SM-SM50+

Typical Performance Data

FREQUENCY (MHz)	INSERTION LOSS (dB)	SMA-MALE 1 RETURN LOSS (dB)	SMA-MALE 2 RETURN LOSS (dB)
10	0.01	46.06	46.06
50	0.01	46.06	46.06
100	0.01	46.06	46.06
500	0.03	46.06	46.06
1000	0.05	46.06	46.06
2000	0.05	40.09	40.09
3000	0.05	36.61	36.61
4000	0.06	36.61	34.15
5000	0.06	36.61	34.15
6000	0.07	36.61	32.26
7000	0.08	36.61	36.61
8000	0.08	36.61	36.61
9000	0.08	32.26	29.42
10000	0.10	26.44	24.94
11000	0.14	24.29	22.12
12000	0.14	23.69	21.23
13000	0.16	24.29	22.12
14000	0.16	24.29	24.29
16000	0.14	32.26	29.42
18000	0.21	28.30	23.69

REV. X1
SM-SM50+
061114
Page 1 of 1



IF/RF MICROWAVE COMPONENTS • ISO 9001 ISO 14001 AS 9100 CERTIFIED RoHS compliant
P.O. Box 350166, Brooklyn, New York 11235-0003 (718) 934-4500 Fax (718) 332-4661

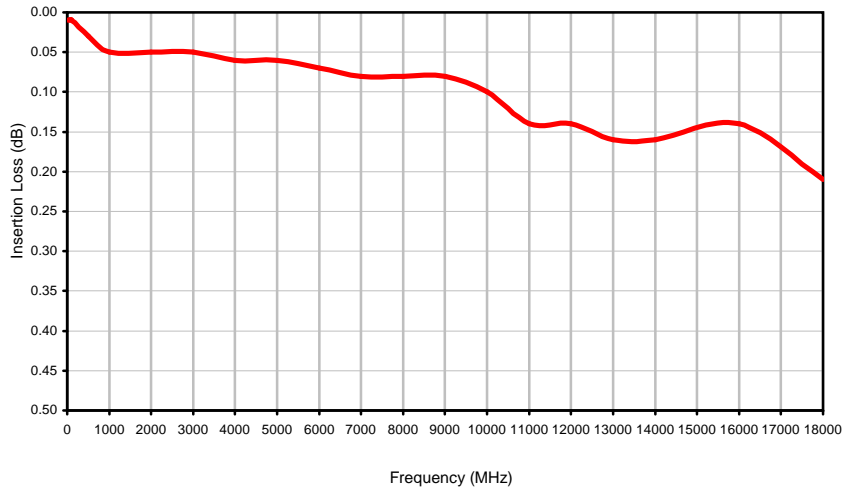


The Design Engineers Search Engine finds the model you need, Instantly • For detailed performance specs & shopping online see

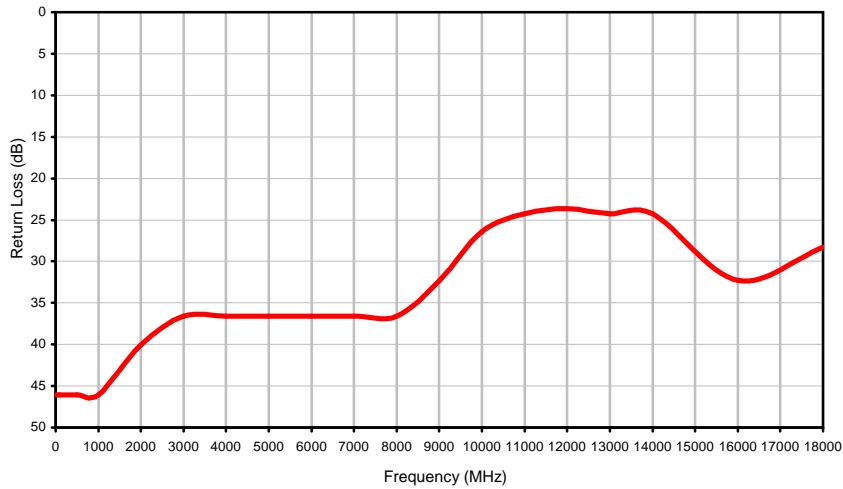


Typical Performance Curves

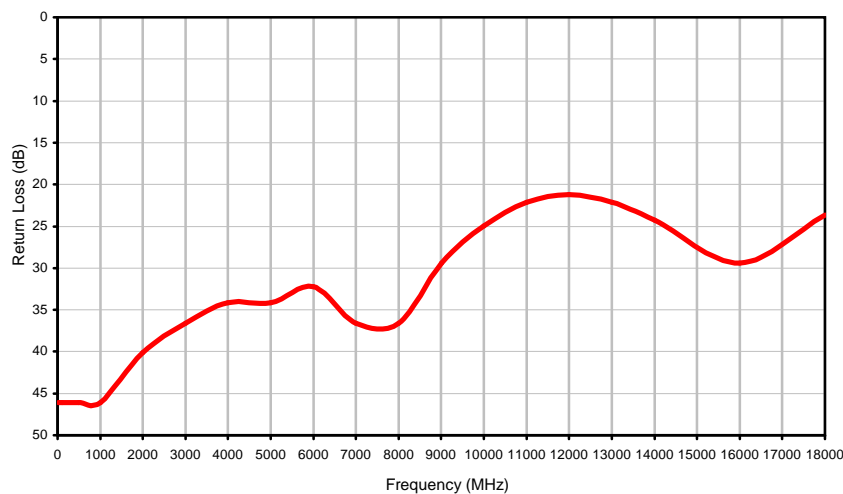
Insertion Loss



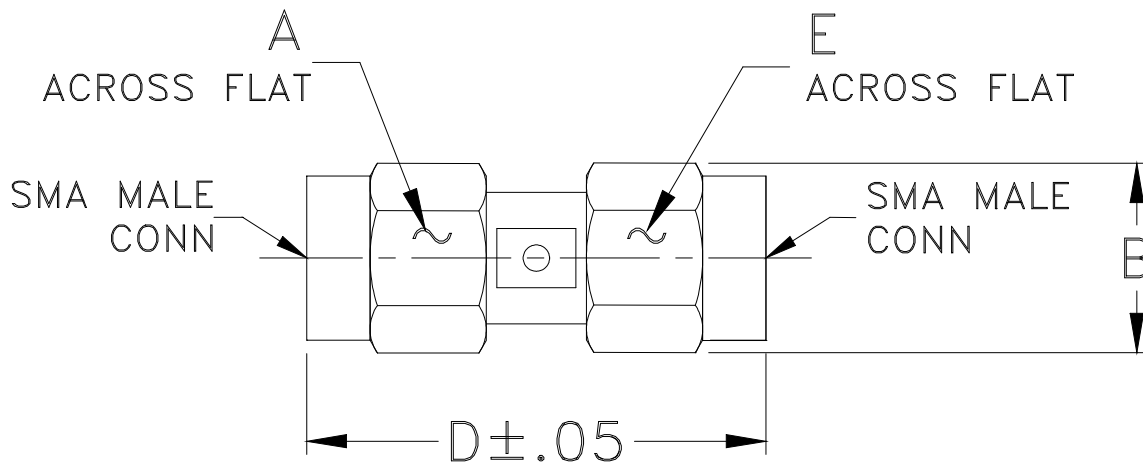
SMA-Male 1 Return Loss



SMA-Male 2 Return Loss



Outline Dimensions



CASE#	A	B	C	D	E	WT. GRAM
DJ951	.312 (7.92)	.36 (9.14)	-- --	.87 (22.10)	.312 (7.92)	4.8

Dimensions are in inches (mm). Tolerances: 2 Pl. $\pm .03$; 3 Pl. $\pm .015$

Notes:

1. Case material: Stainless steel.
2. Finish: Passivation.
3. For polarity of connector refer individual model data sheet.



P.O. Box 350166, Brooklyn, New York 11235-0003 (718) 934-4500 Fax (718) 332-4661 For detailed performance specs & shopping online see Mini-Circuits web site



The Design Engineers Search Engine Provides ACTUAL Data Instantly From MINI-CIRCUITS At: www.minicircuits.com

RF/IF MICROWAVE COMPONENTS



All Mini-Circuits products are manufactured under exacting quality assurance and control standards, and are capable of meeting published specifications after being subjected to any or all of the following physical and environmental test.

Specification	Test/Inspection Condition	Reference/Spec
Operating Temperature	-55° to 100°C Ambient Environment	Individual Model Data Sheet
Storage Temperature	-55° to 100° C Ambient Environment	Individual Model Data Sheet
Barometric Pressure	100,000 Feet	MIL-STD-202, Method 105, Condition D
Humidity	90% RH, 65°C Units may require bake-out after humidity to restore full performance.	MIL-STD-202, Method 103
Thermal Shock	-65° to 125°C, 5 cycles	MIL-STD-202, Method 107, Condition B
Vibration (High Frequency)	20g peak, 10-2000 Hz, 12 times in each of three perpendicular directions (total 36)	MIL-STD-202, Method 204, Condition D
Mechanical Shock	100g, 6ms sawtooth, 3 shocks each direction 3 axes (total 18)	MIL-STD-202, Method 213, Condition I