

Table of Contents

	Fixed PCB Terminals	Page
	3.50 / 3.81 mm pitch	9
	5.00 / 5.08 mm pitch	10
	6.35 mm pitch	31
	7.50 / 7.62 mm pitch	32
	10.00 / 10.15 mm pitch	41
	20.32 mm pitch	45
	Two part PCB Terminals	
	3.50 mm pitch	49
	5.00 mm pitch	50
	10.00 mm pitch	57
	Pluggable PCB Terminals - Header	
	3.50 / 3.81 mm pitch	60
	5.00 / 5.08 mm pitch	66
	7.50 / 7.62 mm pitch	76
	Pluggable PCB Terminals - Plug	
	3.50 / 3.81 mm pitch	80
	5.00 / 5.08 mm pitch	89
	7.50 / 7.62 mm pitch	100
	Special Terminals	105
	Accessories	113
	Technical Data	125
	Index	134

Through Hole Reflow (THR)



Packaging

The ability to utilize automated pick and place equipment to populate the PC board with SMT/THR components offers one of the greatest savings potentials in comparison to wave soldering. That is why it is important to select packaging suitable to the feeder method and optimized for the performance of the automatic pick & place equipment. Our components are therefor available in a vaiariety of standard packaging.

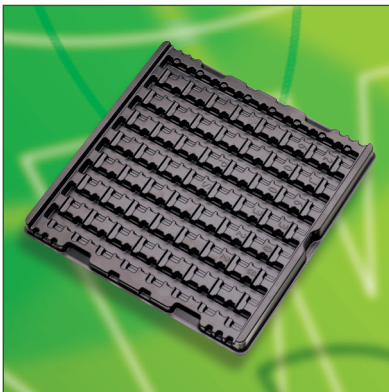
Box

Sampling and prototyping
Pre-production pilot runs



Tape on Reel

Serial production
Limited variation



Tray

Serial production
Increased variation
> 12 poles



Tube

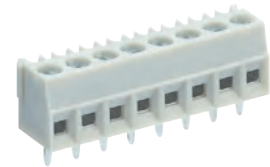
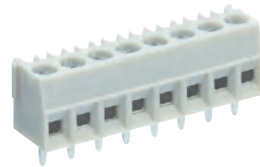
Serial production
Unconventionally shaped products
(OSD)



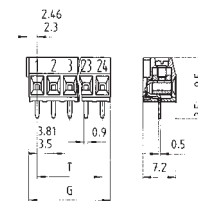
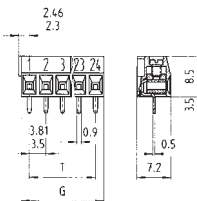
PCB terminal series 8593 / 8893, rising cage clamp system

pitch 3.50 / 3.81 mm

IEC	160 V 2.5kV cat.3 250 V 2.5kV cat.2 690 V 2.5kV cat.1	10 A	0.14 - 1.0 mm ² (Stranded) 0.14 - 1.5 mm ² (Solid)
UL	300 V	10 A	30 - 16 AWG
CSA	300 V	10 A	30 - 16 AWG
Solder Pin	0.5 x 0.9 mm		
Drill Hole	1.1 mm		
Wire Strip Length	5.0 mm		
Screw Size	M2		



See Technical Data section for screw material options



Approvals:



series 8593 pitch 3.50 mm

Box Qty	G	T	Pole
100		3.5	2
100		7.0	3
50		10.5	4
50		14.0	5
50		17.5	6
50		21.0	7
50		24.5	8
50		28.0	9
50		31.5	10
50		35.0	11
50		38.5	12
50		42.0	13
50		45.5	14
50		49.0	15
50		52.5	16

unmarked without insulating plate

Part Number
25.195.0253.0
25.195.0353.0
25.195.0453.0
25.195.0553.0
25.195.0653.0
25.195.0753.0
25.195.0853.0
25.195.0953.0
25.195.1053.0
25.195.1153.0
25.195.1253.0
25.195.1353.0
25.195.1453.0
25.195.1553.0
25.195.1653.0

marked without insulating plate

Part Number
25.194.0253.0
25.194.0353.0
25.194.0453.0
25.194.0553.0
25.194.0653.0
25.194.0753.0
25.194.0853.0
25.194.0953.0
25.194.1053.0
25.194.1153.0
25.194.1253.0
25.194.1353.0
25.194.1453.0
25.194.1553.0
25.194.1653.0

unmarked with insulating plate with locating cams

Part Number
25.195.9253.0
25.195.9353.0

marked with insulating plate with locating cams

Part Number
25.194.9253.0
25.194.9353.0

series 8893 pitch 3.81 mm

Box Qty	G	T	Pole
100		3.81	2
100		7.62	3
50		11.43	4
50		15.24	5
50		19.05	6
50		22.86	7
50		26.67	8
50		30.48	9
50		34.29	10
50		38.10	11
50		41.91	12
50		45.72	13
50		49.53	14
50		53.34	15
50		57.15	16

unmarked without insulating plate

Part Number
25.197.0253.0
25.197.0353.0
25.197.0453.0
25.197.0553.0
25.197.0653.0
25.197.0753.0
25.197.0853.0
25.197.0953.0
25.197.1053.0
25.197.1153.0
25.197.1253.0
25.197.1353.0
25.197.1453.0
25.197.1553.0
25.197.1653.0

marked without insulating plate

Part Number
25.196.0253.0
25.196.0353.0
25.196.0453.0
25.196.0553.0
25.196.0653.0
25.196.0753.0
25.196.0853.0
25.196.0953.0
25.196.1053.0
25.196.1153.0
25.196.1253.0
25.196.1353.0
25.196.1453.0
25.196.1553.0
25.196.1653.0

unmarked with insulating plate with locating cams

Part Number
25.197.9253.0
25.197.9353.0

marked with insulating plate with locating cams

Part Number
25.196.9253.0
25.196.9353.0

PCB terminal series 8192 / 8292, rising cage clamp system

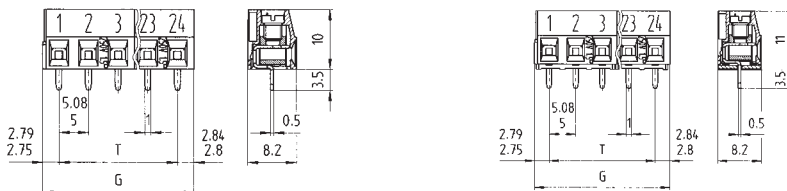
pitch 5.00 / 5.08 mm

IEC	250 V 4kV cat.3 690 V 4kV cat.2 1000 V 4kV cat.1	10 A	0.14 - 1.5 mm ² (Stranded) 0.14 - 2.5 mm ² (Solid)
UL	300 V	15 A (Field) 16 A (Factory)	30 - 14 AWG
CSA	300 V	15 A	30 - 14 AWG
Solder Pin	0.5 x 1.0 mm		
Drill Hole	1.2 mm		
Wire Strip Length	6.0 mm		
Screw Size	M3		



See Technical Data section for screw material options

Approvals:



series 8192 pitch 5.00 mm

Box Qty	G	T	Pole
100	10.55	5	2
100	15.55	10	3
50	20.55	15	4
50	25.55	20	5
50	30.55	25	6
50	35.55	30	7
50	40.55	35	8
50	45.55	40	9
50	50.55	45	10
50	55.55	50	11
50	60.55	55	12
50	65.55	60	13
50	70.55	65	14
50	75.55	70	15
50	80.55	75	16

unmarked without insulating plate	marked without insulating plate	unmarked with insulating plate with locating cams	marked with insulating plate with locating cams
Part Number	Part Number	Part Number	Part Number
25.191.0253.0	25.190.0253.0	25.191.9253.0	25.190.9253.0
25.191.0353.0	25.190.0353.0	25.191.9353.0	25.190.9353.0
25.191.0453.0	25.190.0453.0		
25.191.0553.0	25.190.0553.0		
25.191.0653.0	25.190.0653.0		
25.191.0753.0	25.190.0753.0		
25.191.0853.0	25.190.0853.0		
25.191.0953.0	25.190.0953.0		
25.191.1053.0	25.190.1053.0		
25.191.1153.0	25.190.1153.0		
25.191.1253.0	25.190.1253.0		
25.191.1353.0	25.190.1353.0		
25.191.1453.0	25.190.1453.0		
25.191.1553.0	25.190.1553.0		
25.191.1653.0	25.190.1653.0		

series 8292 pitch 5.08 mm

Box Qty	G	T	Pole
100	10.71	5.08	2
100	15.79	10.16	3
50	20.87	15.24	4
50	25.95	20.32	5
50	31.03	25.40	6
50	36.11	30.48	7
50	41.19	35.56	8
50	46.27	40.64	9
50	51.35	45.72	10
50	56.43	50.80	11
50	61.51	55.88	12
50	66.59	60.96	13
50	71.67	66.04	14
50	76.75	71.12	15
50	81.83	76.20	16

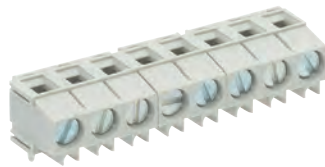
unmarked without insulating plate	marked without insulating plate	unmarked with insulating plate with locating cams	marked with insulating plate with locating cams
Part Number	Part Number	Part Number	Part Number
25.193.0253.0	25.192.0253.0	25.193.9253.0	25.192.9253.0
25.193.0353.0	25.192.0353.0	25.193.9353.0	25.192.9353.0
25.193.0453.0	25.192.0453.0		
25.193.0553.0	25.192.0553.0		
25.193.0653.0	25.192.0653.0		
25.193.0753.0	25.192.0753.0		
25.193.0853.0	25.192.0853.0		
25.193.0953.0	25.192.0953.0		
25.193.1053.0	25.192.1053.0		
25.193.1153.0	25.192.1153.0		
25.193.1253.0	25.192.1253.0		
25.193.1353.0	25.192.1353.0		
25.193.1453.0	25.192.1453.0		
25.193.1553.0	25.192.1553.0		
25.193.1653.0	25.192.1653.0		

Custom Marking Available
More poles available on request

PCB terminal series 8192 / 8292, rising cage clamp system

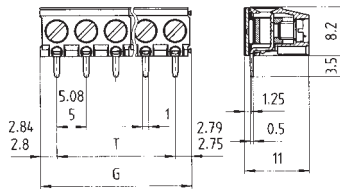
pitch 5.00 / 5.08 mm

IEC	250 V 4kV cat.3 690 V 4kV cat.2 1000 V 4kV cat.1	10 A	0.14 - 1.5 mm ² (Stranded) 0.14 - 2.5 mm ² (Solid)
UL	300 V	15 A (Field) 16 A (Factory)	30 - 14 AWG
CSA	300 V	15 A	30 - 14 AWG
Solder Pin	0.5 x 1.0 mm		
Drill Hole	1.2 mm		
Wire Strip Length	6.0 mm		
Screw Size	M3		



See Technical Data section for screw material options

Approvals:



series 8192 ZW pitch 5.00 mm

unmarked
without insulating plate

Box Qty	G	T	Pole	Part Number	Part Number	Part Number	Part Number
100	10.55	5	2	25.191.6253.0			
100	15.55	10	3	25.191.6353.0			
50	20.55	15	4	25.191.6453.0			
50	25.55	20	5	25.191.6553.0			
50	30.55	25	6	25.191.6653.0			
50	35.55	30	7	25.191.6753.0			
50	40.55	35	8	25.191.6853.0			
50	45.55	40	9	25.191.6953.0			
50	50.55	45	10	25.191.7053.0			
50	55.55	50	11	25.191.7153.0			
50	60.55	55	12	25.191.7253.0			
50	65.55	60	13	25.191.7353.0			
50	70.55	65	14	25.191.7453.0			
50	75.55	70	15	25.191.7553.0			
50	80.55	75	16	25.191.7653.0			

series 8292 ZW pitch 5.08 mm

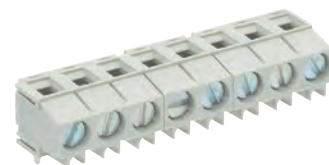
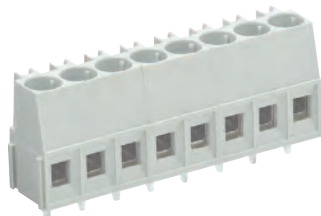
unmarked
without insulating plate

Box Qty	G	T	Pole	Part Number	Part Number	Part Number	Part Number
100	10.71	5.08	2	25.193.6253.0			
100	15.79	10.16	3	25.193.6353.0			
50	20.87	15.24	4	25.193.6453.0			
50	25.95	20.32	5	25.193.6553.0			
50	31.03	25.40	6	25.193.6653.0			
50	36.11	30.48	7	25.193.6753.0			
50	41.19	35.56	8	25.193.6853.0			
50	46.27	40.64	9	25.193.6953.0			
50	51.35	45.72	10	25.193.7053.0			
50	56.43	50.80	11	25.193.7153.0			
50	61.51	55.88	12	25.193.7253.0			
50	66.59	60.96	13	25.193.7353.0			
50	71.67	66.04	14	25.193.7453.0			
50	76.75	71.12	15	25.193.7553.0			
50	81.83	76.20	16	25.193.7653.0			

PCB screw terminal series 8191 / 8291, rising cage clamp system

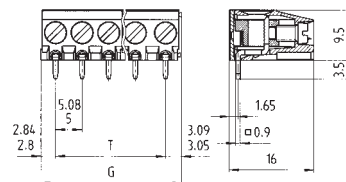
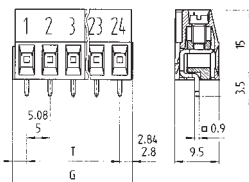
pitch 5.00/5.08 mm

IEC	250 V 4kV cat.3	16 A	0.14 - 2.5 mm ² (Stranded)
	690 V 4kV cat.2		0.14 - 4.0 mm ² (Solid)
	1000 V 4kV cat.1		
UL	300 V	20 A (Field) 30 A (Factory)	22 -12 AWG
	CSA	300 V	25 A
Solder Pin		0.9 x 0.9 mm	
Drill Hole		1.3 mm	
Wire Strip Length		6.5 mm	
Screw Size		M3	



See Technical Data section for screw material options

Approvals:



series 8191 / ZW pitch 5.00 mm

Box Qty	G	T	Pole
100	10.85	5	2
100	15.85	10	3
50	20.85	15	4
50	25.85	20	5
50	30.85	25	6
50	35.85	30	7
50	40.85	35	8
50	45.85	40	9
50	50.85	45	10
50	55.85	50	11
50	60.85	55	12
50	65.85	60	13
50	70.85	65	14
50	75.85	70	15
50	80.85	75	16

unmarked without insulating plate without locating cams	marked without insulating plate without locating cams	unmarked with insulating plate with locating cams	marked with insulating plate with locating cams
Part Number	Part Number	Part Number	Part Number
25.161.0253.0	25.160.0253.0	25.161.6253.0	25.160.6253.0
25.161.0353.0	25.160.0353.0	25.161.6353.0	25.160.6353.0
25.161.0453.0	25.160.0453.0	25.161.6453.0	25.160.6453.0
25.161.0553.0	25.160.0553.0	25.161.6553.0	25.160.6553.0
25.161.0653.0	25.160.0653.0	25.161.6653.0	25.160.6653.0
25.161.0753.0	25.160.0753.0	25.161.6753.0	25.160.6753.0
25.161.0853.0	25.160.0853.0	25.161.6853.0	25.160.6853.0
25.161.0953.0	25.160.0953.0	25.161.6953.0	25.160.6953.0
25.161.1053.0	25.160.1053.0	25.161.7053.0	25.160.7053.0
25.161.1153.0	25.160.1153.0	25.161.7153.0	25.160.7153.0
25.161.1253.0	25.160.1253.0	25.161.7253.0	25.160.7253.0
25.161.1353.0	25.160.1353.0	25.161.7353.0	25.160.7353.0
25.161.1453.0	25.160.1453.0	25.161.7453.0	25.160.7453.0
25.161.1553.0	25.160.1553.0	25.161.7553.0	25.160.7553.0
25.161.1653.0	25.160.1653.0	25.161.7653.0	25.160.7653.0

series 8291 / ZW pitch 5.08 mm

Box Qty	G	T	Pole
100	11.01	5.08	2
100	16.09	10.16	3
50	21.17	15.24	4
50	26.25	20.32	5
50	31.33	25.40	6
50	36.41	30.48	7
50	41.49	35.56	8
50	46.57	40.64	9
50	51.65	45.72	10
50	56.73	50.80	11
50	61.81	55.88	12
50	66.89	60.96	13
50	71.97	66.04	14
50	77.05	71.12	15
50	82.13	76.20	16

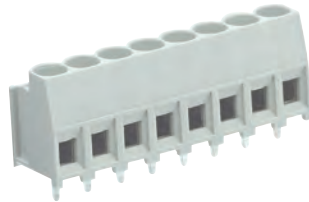
unmarked without insulating plate without locating cams	marked without insulating plate without locating cams	unmarked with insulating plate with locating cams	marked with insulating plate with locating cams
Part Number	Part Number	Part Number	Part Number
25.163.0253.0	25.162.0253.0	25.163.6253.0	25.162.6253.0
25.163.0353.0	25.162.0353.0	25.163.6353.0	25.162.6353.0
25.163.0453.0	25.162.0453.0	25.163.6453.0	25.162.6453.0
25.163.0553.0	25.162.0553.0	25.163.6553.0	25.162.6553.0
25.163.0653.0	25.162.0653.0	25.163.6653.0	25.162.6653.0
25.163.0753.0	25.162.0753.0	25.163.6753.0	25.162.6753.0
25.163.0853.0	25.162.0853.0	25.163.6853.0	25.162.6853.0
25.163.0953.0	25.162.0953.0	25.163.6953.0	25.162.6953.0
25.163.1053.0	25.162.1053.0	25.163.7053.0	25.162.7053.0
25.163.1153.0	25.162.1153.0	25.163.7153.0	25.162.7153.0
25.163.1253.0	25.162.1253.0	25.163.7253.0	25.162.7253.0
25.163.1353.0	25.162.1353.0	25.163.7353.0	25.162.7353.0
25.163.1453.0	25.162.1453.0	25.163.7453.0	25.162.7453.0
25.163.1553.0	25.162.1553.0	25.163.7553.0	25.162.7553.0
25.163.1653.0	25.162.1653.0	25.163.7653.0	25.162.7653.0

Custom Marking Available
More poles available on request

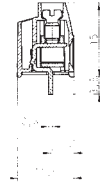
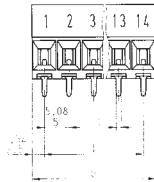
PCB terminal series 8191 / 8291, rising cage clamp system

pitch 5.00 / 5.08 mm

IEC	250 V 4kV cat.3 690 V 4kV cat.2 1000 V 4kV cat.1	16 A	0.14 - 2.5 mm ² (Stranded) 0.14 - 4.0 mm ² (Solid)
UL	300 V	20 A (Field) 30 A (Factory)	22 - 12 AWG
CSA	300 V	25 A	22 - 12 AWG
Solder Pin	1.0 x 0.8 mm		
Drill Hole	1.3 mm		
Wire Strip Length	6.5 mm		
Screw Size	M3		



See Technical Data section for screw material options



Approvals:



series 8191 R pitch 5.00 mm				unmarked with insulating plate		marked with insulating plate	
Box Qty	G	T	Pole	Part Number	Part Number	Part Number	Part Number
500	10.85	5	2	25.155.0253.0	25.155.2253.0		
500	15.85	10	3	25.155.0353.0	25.155.2353.0		
250	20.85	15	4	25.155.0453.0	25.155.2453.0		
250	25.85	20	5	25.155.0553.0	25.155.2553.0		
200	30.85	25	6	25.155.0653.0	25.155.2653.0		
200	35.85	30	7	25.155.0753.0	25.155.2753.0		
100	40.85	35	8	25.155.0853.0	25.155.2853.0		
100	45.85	40	9	25.155.0953.0	25.155.2953.0		
100	50.85	45	10	25.155.1053.0	25.155.3053.0		
50	55.85	50	11	25.155.1153.0	25.155.3153.0		
50	60.85	55	12	25.155.1253.0	25.155.3253.0		
50	66.85	60	13	25.155.1353.0	25.155.3353.0		
50	70.85	65	14	25.155.1453.0	25.155.3453.0		

series 8291 R pitch 5.08 mm				unmarked with insulating plate		marked with insulating plate	
Box Qty	G	T	Pole	Part Number	Part Number	Part Number	Part Number
500	11.01	5.08	2	25.156.0253.0	25.156.2253.0		
500	16.09	10.16	3	25.156.0353.0	25.156.2353.0		
250	21.17	15.24	4	25.156.0453.0	25.156.2453.0		
250	26.25	20.32	5	25.156.0553.0	25.156.2553.0		
200	31.33	25.40	6	25.156.0653.0	25.156.2653.0		
200	36.41	30.48	7	25.156.0753.0	25.156.2753.0		
100	41.49	35.56	8	25.156.0853.0	25.156.2853.0		
100	46.57	40.64	9	25.156.0953.0	25.156.2953.0		
100	51.56	45.72	10	25.156.1053.0	25.156.3053.0		
50	56.73	50.80	11	25.156.1153.0	25.156.3153.0		
50	61.81	55.88	12	25.156.1253.0	25.156.3253.0		
50	66.89	60.96	13	25.156.1353.0	25.156.3353.0		
50	71.97	66.04	14	25.156.1453.0	25.156.3453.0		

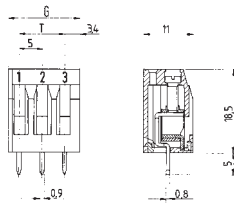
PCB terminal series 8190, rising cage clamp system

pitch 5.00 / 10.00 mm

IEC	250 V 4kV cat.3 690 V 4kV cat.2 1000 V 4kV cat.1	16 A	0.14 - 2.5 mm ² (Stranded) 0.14 - 4.0 mm ² (Solid)
UL	300 V	15 A	22 - 12 AWG
CSA	300 V	10 A	22 - 14 AWG
Solder Pin	0.8 x 0.9 mm		
Drill Hole	1.2 mm		
Wire Strip Length	6.0 mm		
Screw Size	M2.5		



See Technical Data section for screw material options



Approvals:



series 8190 pitch 5.00 mm				unmarked	marked		
Box Qty	G	T	Pole	Part Number	Part Number	Part Number	Part Number
100	10.86	5	2	25.131.0253.0	25.130.0253.0		
100	15.86	10	3	25.131.0353.0	25.130.0353.0		
50	20.86	15	4	25.131.0453.0	25.130.0453.0		
50	25.86	20	5	25.131.0553.0	25.130.0553.0		
50	30.86	25	6	25.131.0653.0	25.130.0653.0		
50	35.86	30	7	25.131.0753.0	25.130.0753.0		
50	40.86	35	8	25.131.0853.0	25.130.0853.0		
50	45.86	40	9	25.131.0953.0	25.130.0953.0		
50	50.86	45	10	25.131.1053.0	25.130.1053.0		
50	55.86	50	11	25.131.1153.0	25.130.1153.0		
50	60.86	55	12	25.131.1253.0	25.130.1253.0		
50	65.86	60	13	25.131.1353.0	25.130.1353.0		
50	70.86	65	14	25.131.1453.0	25.130.1453.0		
50	75.86	70	15	25.131.1553.0	25.130.1553.0		
50	80.86	75	16	25.131.1653.0	25.130.1653.0		

series 8190 pitch 10.00 mm				unmarked	marked	unmarked with insulating plate with locating cams	marked with insulating plate with locating cams
Box Qty	G	T	Pole	Part Number	Part Number	Part Number	Part Number
50	20.86	10	2	25.133.0253.0	25.132.0253.0		
50	30.86	20	3	25.133.0353.0	25.132.0353.0		
50	40.86	30	4	25.133.0453.0	25.132.0453.0		
50	50.86	40	5	25.133.0553.0	25.132.0553.0		
50	60.86	50	6	25.133.0653.0	25.132.0653.0		
50	70.86	60	7	25.133.0753.0	25.132.0753.0		
50	80.86	70	8	25.133.0853.0	25.132.0853.0		
50	90.86	80	9	25.133.0953.0	25.132.0953.0		
50	100.86	90	10	25.133.1053.0	25.132.1053.0		
50	110.86	100	11	25.133.1153.0	25.132.1153.0		
50	120.86	110	12	25.133.1253.0	25.132.1253.0		

Custom Marking Available
More poles available on request

PCB terminal series 8158, 8258 spring clamp system

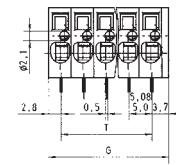
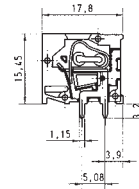
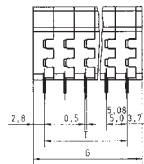
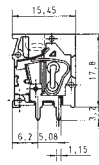
pitch 5.00 / 5.08 mm

IEC	250 V 4kV cat.3 690 V 4kV cat.2 1000 V 4kV cat.1	16 A	0.14 - 2.5 mm ² (Stranded) 0.14 - 4.0 mm ² (Solid)
UL			22 - 12 AWG 30 - 12 AWG
CSA			22 - 12 AWG
Solder Pin			0.5 x 1.15 mm
Drill Hole			1.3 mm
Wire Strip Length			9.0 mm



See Technical Data section for screw material options

Approvals:



series 8158 TOP V/H pitch 5.00 mm

Box Qty	G	T	Pole	Part Number	Part Number	Part Number	Part Number
100			2	25.780.0253.0		25.790.0253.0	
100			3	25.780.0353.0		25.790.0353.0	
50			4	25.780.0453.0		25.790.0453.0	
50			5	25.780.0553.0		25.790.0553.0	
50			6	25.780.0653.0		25.790.0653.0	
50			7	25.780.0753.0		25.790.0753.0	
50			8	25.780.0853.0		25.790.0853.0	
50			9	25.780.0953.0		25.790.0953.0	
50			10	25.780.1053.0		25.790.1053.0	
50			11	25.780.1153.0		25.790.1153.0	
50			12	25.780.1253.0		25.790.1253.0	
50			13	25.780.1353.0		25.790.1353.0	
50			14	25.780.1453.0		25.790.1453.0	
50			15	25.780.1553.0		25.790.1553.0	
50			16	25.780.1653.0		25.790.1653.0	

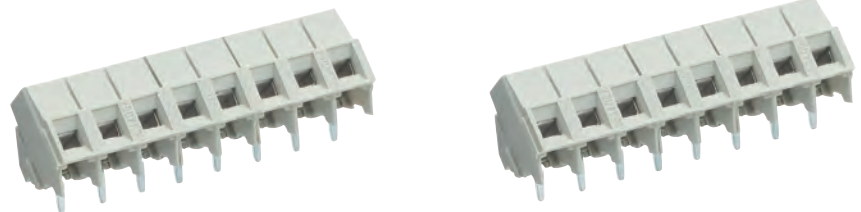
series 8258 TOP V/H pitch 5.08 mm

Box Qty	G	T	Pole	Part Number	Part Number	Part Number	Part Number
100			2	25.781.0253.0		25.791.0253.0	
100			3	25.781.0353.0		25.791.0353.0	
50			4	25.781.0453.0		25.791.0453.0	
50			5	25.781.0553.0		25.791.0553.0	
50			6	25.781.0653.0		25.791.0653.0	
50			7	25.781.0753.0		25.791.0753.0	
50			8	25.781.0853.0		25.791.0853.0	
50			9	25.781.0953.0		25.791.0953.0	
50			10	25.781.1053.0		25.791.1053.0	
50			11	25.781.1153.0		25.791.1153.0	
50			12	25.781.1253.0		25.791.1253.0	
50			13	25.781.1353.0		25.791.1353.0	
50			14	25.781.1453.0		25.791.1453.0	
50			15	25.781.1553.0		25.791.1553.0	
50			16	25.781.1653.0		25.791.1653.0	

PCB terminal series 8134 / 8234, rising cage clamp system

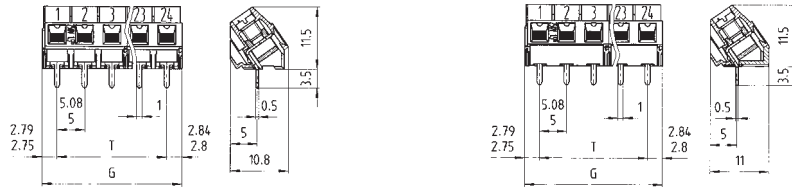
pitch 5.00 / 5.08 mm

IEC	250 V 4kV cat.3 690 V 4kV cat.2 1000 V 4kV cat.1	10 A	0.14 - 1.5 mm ² (Stranded) 0.14 - 2.5 mm ² (Solid)
UL	300 V	15 A (Field) 16 A (Factory)	30 - 14 AWG
CSA	300 V	15 A	30 - 14 AWG
Solder Pin	0.5 x 1.0 mm		
Drill Hole	1.2 mm		
Wire Strip Length	6.0 mm		
Screw Size	M3		



See Technical Data section for screw material options

Approvals:



series 8134 pitch 5.00 mm

Box Qty	G	T	Pole
100	10.55	5	2
100	15.55	10	3
50	20.55	15	4
50	25.55	20	5
50	30.55	25	6
50	35.55	30	7
50	40.55	35	8
50	45.55	40	9
50	50.55	45	10
50	55.55	50	11
50	60.55	55	12
50	65.55	60	13
50	70.55	65	14
50	75.55	70	15
50	80.55	75	16

unmarked without insulating plate

Part Number
25.501.0253.0
25.501.0353.0
25.501.0453.0
25.501.0553.0
25.501.0653.0
25.501.0753.0
25.501.0853.0
25.501.0953.0
25.501.1053.0
25.501.1153.0
25.501.1253.0
25.501.1353.0
25.501.1453.0
25.501.1553.0
25.501.1653.0

marked without insulating plate

Part Number
25.500.0253.0
25.500.0353.0
25.500.0453.0
25.500.0553.0
25.500.0653.0
25.500.0753.0
25.500.0853.0
25.500.0953.0
25.500.1053.0
25.500.1153.0
25.500.1253.0
25.500.1353.0
25.500.1453.0
25.500.1553.0
25.500.1653.0

unmarked with insulating plate with locating cams

Part Number
25.501.6253.0
25.501.6353.0

marked with locating cams

Part Number
25.500.6253.0
25.500.6353.0

series 8234 pitch 5.08 mm

Box Qty	G	T	Pole
100	10.71	5.08	2
100	15.79	10.16	3
50	20.87	15.24	4
50	25.95	20.32	5
50	31.03	25.40	6
50	36.11	30.48	7
50	41.19	35.56	8
50	46.27	40.64	9
50	51.35	45.72	10
50	56.42	50.80	11
50	61.51	55.88	12
50	66.59	60.96	13
50	71.67	66.04	14
50	76.75	71.12	15
50	81.83	76.20	16

unmarked without insulating plate

Part Number
25.503.0253.0
25.503.0353.0
25.503.0453.0
25.503.0553.0
25.503.0653.0
25.503.0753.0
25.503.0853.0
25.503.0953.0
25.503.1053.0
25.503.1153.0
25.503.1253.0
25.503.1353.0
25.503.1453.0
25.503.1553.0
25.503.1653.0

marked without insulating plate

Part Number
25.502.0253.0
25.502.0353.0
25.502.0453.0
25.502.0553.0
25.502.0653.0
25.502.0753.0
25.502.0853.0
25.502.0953.0
25.502.1053.0
25.502.1153.0
25.502.1253.0
25.502.1353.0
25.502.1453.0
25.502.1553.0
25.502.1653.0

unmarked with insulating plate with locating cams

Part Number
25.503.6253.0
25.503.6353.0

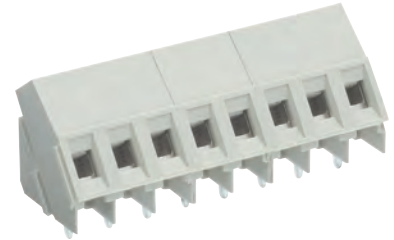
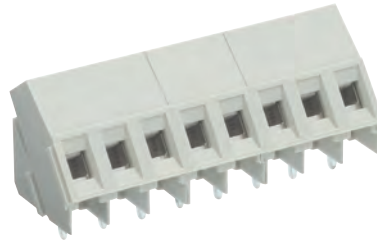
marked with locating cams

Part Number
25.502.6253.0
25.502.6353.0

PCB terminal series 8135 / 8235, rising cage clamp system

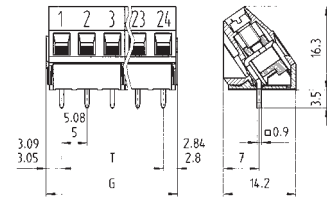
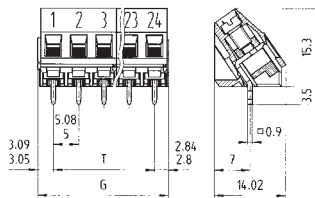
pitch 5.00 / 5.08 mm

IEC	250 V 4kV cat.3 690 V 4kV cat.2 1000 V 4kV cat.1	16 A	0.14 - 2.5 mm ² (Stranded) 0.14 - 4.0 mm ² (Solid)
UL	300 V	20 A (Field) 30 A (Factory)	22 - 12 AWG
CSA	300 V	25 A	22 - 12 AWG
Solder Pin	0.9 x 0.9 mm		
Drill Hole	1.3 mm		
Wire Strip Length	6.5 mm		
Screw Size	M3		



See Technical Data section for screw material options

Approvals:



series 8135 pitch 5.00 mm

Box Qty	G	T	Pole
100	10.85	5	2
100	15.85	10	3
50	20.85	15	4
50	25.85	20	5
50	30.85	25	6
50	35.85	30	7
50	40.85	35	8
50	45.85	40	9
50	50.85	45	10
50	55.85	50	11
50	60.85	55	12
50	65.85	60	13
50	70.85	65	14
50	75.85	70	15
50	80.85	75	16

unmarked without insulating plate		marked without insulating plate		unmarked with insulating plate with locating cams		marked with insulating plate with locating cams	
Part Number	Part Number	Part Number	Part Number	Part Number	Part Number	Part Number	Part Number
25.521.0253.0	25.520.0253.0	25.521.6253.0	25.520.6253.0				
25.521.0353.0	25.520.0353.0	25.521.6353.0	25.520.6353.0				
25.521.0453.0	25.520.0453.0						
25.521.0553.0	25.520.0553.0						
25.521.0653.0	25.520.0653.0						
25.521.0753.0	25.520.0753.0						
25.521.0853.0	25.520.0853.0						
25.521.0953.0	25.520.0953.0						
25.521.1053.0	25.520.1053.0						
25.521.1153.0	25.520.1153.0						
25.521.1253.0	25.520.1253.0						
25.521.1353.0	25.520.1353.0						
25.521.1453.0	25.520.1453.0						
25.521.1553.0	25.520.1553.0						
25.521.1653.0	25.520.1653.0						

series 8235 pitch 5.08 mm

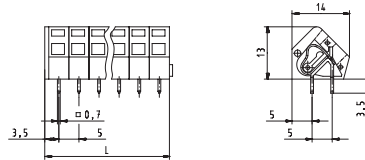
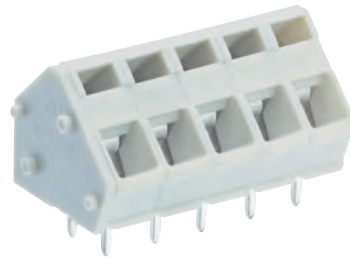
Box Qty	G	T	Pole
100	11.01	5.08	2
100	16.09	10.16	3
50	21.17	15.24	4
50	26.25	20.32	5
50	31.33	25.40	6
50	36.41	30.48	7
50	41.49	35.56	8
50	46.57	40.64	9
50	51.65	45.72	10
50	56.73	50.80	11
50	61.81	55.88	12
50	66.89	60.96	13
50	71.97	66.04	14
50	77.05	71.12	15
50	82.13	76.20	16

unmarked without insulating plate		marked without insulating plate		unmarked with insulating plate with locating cams		marked with insulating plate with locating cams	
Part Number	Part Number	Part Number	Part Number	Part Number	Part Number	Part Number	Part Number
25.523.0253.0	25.522.0253.0	25.523.6253.0	25.522.6253.0				
25.523.0353.0	25.522.0353.0	25.523.6353.0	25.522.6353.0				
25.523.0453.0	25.522.0453.0						
25.523.0553.0	25.522.0553.0						
25.523.0653.0	25.522.0653.0						
25.523.0753.0	25.522.0753.0						
25.523.0853.0	25.522.0853.0						
25.523.0953.0	25.522.0953.0						
25.523.1053.0	25.522.1053.0						
25.523.1153.0	25.522.1153.0						
25.523.1253.0	25.522.1253.0						
25.523.1353.0	25.522.1353.0						
25.523.1453.0	25.522.1453.0						
25.523.1553.0	25.522.1553.0						
25.523.1653.0	25.522.1653.0						

PCB screw terminal series 8191, spring clamp system

pitch 5.00

IEC	250 V 4kV cat.3		0.08 - 2.5 mm ² (Stranded) 0.08 - 2.5 mm ² (Solid)
UL	300 V	16 A	28 -12 AWG
CSA	300 V	16 A	28 -18 AWG
Solder Pin			0.7 x 0.7 mm
Drill Hole			1.0 mm
Wire Strip Length			6.0 mm



Approvals:



series 8191 FK
pitch 5.00 mm

unmarked

Box Qty	G	T	Pole	Part Number	Part Number	Part Number	Part Number
100	10.55	5	2	27.007.3253.0			
100	15.55	10	3	27.007.3353.0			
50	20.55	15	4	27.007.3453.0			
50	25.55	20	5	27.007.3553.0			
50	30.55	25	6	27.007.3653.0			
50	35.55	30	7	27.007.3753.0			
50	40.55	35	8	27.007.3853.0			
50	45.55	40	9	27.007.3953.0			
50	50.55	45	10	27.007.4053.0			
50	55.55	50	11	27.007.4153.0			
50	60.55	55	12	27.007.4253.0			
50	65.55	60	13	27.007.4353.0			
50	70.55	65	14	27.007.4453.0			
50	75.55	70	15	27.007.4553.0			
50	80.55	75	16	27.007.4653.0			

Box Qty	G	T	Pole	Part Number	Part Number	Part Number	Part Number

Custom Marking Available
More poles available on request

PCB terminal series 8185 / 8285, TOP connection system

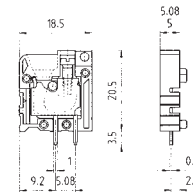
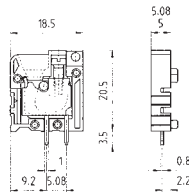
pitch 5.00/5.08 mm

IEC	250 V 4kV cat.3	16 A	0.14 - 2.5 mm ² (Stranded)
	690 V 4kV cat.2		0.14 - 4.0 mm ² (Solid)
	1000 V 4kV cat.1		
UL	300 V	20 A (Field)	22 - 12 AWG
		25 A (Factory)	30 - 12 AWG
CSA	300 V	20 A	22 - 12 AWG
Solder Pin		0.8 x 1.0 mm	
Drill Hole		1.3 mm	
Wire Strip Length		9.0 mm	
Screw Size		M2.5	



See Technical Data section for screw material options

Approvals:



series 8185 TOP V pitch 5.00 mm

Box Qty	G	T	Pole	Individual poles connected in series (1 pole)		Individual poles connected in series (end plate)	
				Part Number	Part Number	Part Number	Part Number
100			2	25.741.0253.0		25.741.0053.0	07.300.4753.0
100			3	25.741.0353.0			
50			4	25.741.0453.0			
50			5	25.741.0553.0			
50			6	25.741.0653.0			
50			7	25.741.0753.0			
50			8	25.741.0853.0			
50			9	25.741.0953.0			
50			10	25.741.1053.0			
50			11	25.741.1153.0			
50			12	25.741.1253.0			
50			13	25.741.1353.0			
50			14	25.741.1453.0			
50			15	25.741.1553.0			
50			16	25.741.1653.0			

series 8285 TOP V pitch 5.08 mm

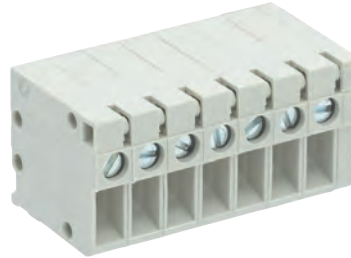
Box Qty	G	T	Pole	Individual poles connected in series (1 pole)		Individual poles connected in series (end plate)	
				Part Number	Part Number	Part Number	Part Number
100			2	25.751.0253.0		25.751.0053.0	07.300.4753.0
100			3	25.751.0353.0			
50			4	25.751.0453.0			
50			5	25.751.0553.0			
50			6	25.751.0653.0			
50			7	25.751.0753.0			
50			8	25.751.0853.0			
50			9	25.751.0953.0			
50			10	25.751.1053.0			
50			11	25.751.1153.0			
50			12	25.751.1253.0			
50			13	25.751.1353.0			
50			14	25.751.1453.0			
50			15	25.751.1553.0			
50			16	25.751.1653.0			

Custom Marking Available
More poles available on request

PCB terminal series 8185 / 8285, TOP connection system

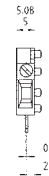
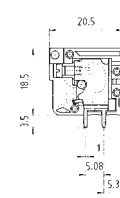
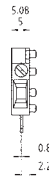
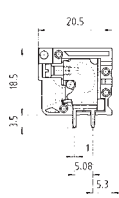
pitch 5.00 / 5.08 mm

IEC	250 V 4kV cat.3	16 A	0.14 - 2.5 mm ² (Stranded)
	690 V 4kV cat.2		0.14 - 4.0 mm ² (Solid)
	1000 V 4kV cat.1		
UL	300 V	20 A (Field)	22 - 12 AWG
		25 A (Factory)	30 - 12 AWG
CSA	300 V	20 A	22 - 12 AWG
Solder Pin		0.8 x 1.0 mm	
Drill Hole		1.3 mm	
Wire Strip Length		9.0 mm	
Screw Size		M2.5	



See Technical Data section for screw material options

Approvals:



series 8185 TOP H pitch 5.00 mm

Box Qty	G	T	Pole	Individual poles connected in series (1 pole)		Individual poles connected in series (end plate)	
				Part Number	Part Number	Part Number	Part Number
100			2	25.741.3253.0		25.741.0153.0	07.300.4753.0
100			3	25.741.3353.0			
50			4	25.741.3453.0			
50			5	25.741.3553.0			
50			6	25.741.3653.0			
50			7	25.741.3753.0			
50			8	25.741.3853.0			
50			9	25.741.3953.0			
50			10	25.741.4053.0			
50			11	25.741.4153.0			
50			12	25.741.4253.0			
50			13	25.741.4353.0			
50			14	25.741.4453.0			
50			15	25.741.4553.0			
50			16	25.741.4653.0			

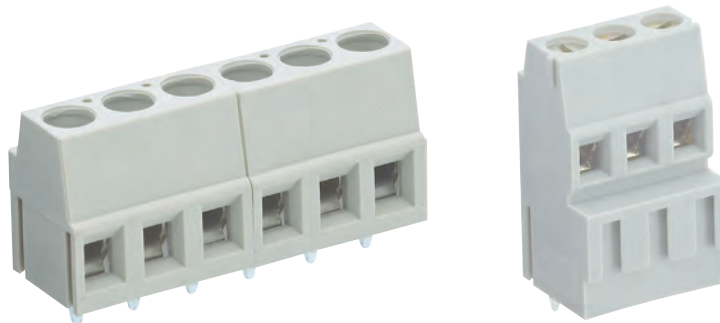
series 8285 TOP H pitch 5.08 mm

Box Qty	G	T	Pole	Individual poles connected in series (1 pole)		Individual poles connected in series (end plate)	
				Part Number	Part Number	Part Number	Part Number
100			2	25.751.3253.0		25.751.0153.0	07.300.4753.0
100			3	25.751.3353.0			
50			4	25.751.3453.0			
50			5	25.751.3553.0			
50			6	25.751.3653.0			
50			7	25.751.3753.0			
50			8	25.751.3853.0			
50			9	25.751.3953.0			
50			10	25.751.4053.0			
50			11	25.751.4153.0			
50			12	25.751.4253.0			
50			13	25.751.4353.0			
50			14	25.751.4453.0			
50			15	25.751.4553.0			
50			16	25.751.4653.0			

PCB terminal series 8292, rising cage clamp system

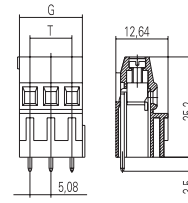
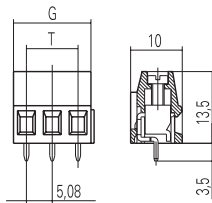
pitch 5.08 mm

IEC	250 V 4kV cat.3	15 A	0.5 - 1.5 mm ² (Stranded)
	250 V 4kV cat.2		0.5 - 1.5 mm ² (Solid)
	500 V 4kV cat.1		
UL	300 V	10 A	24 - 14 AWG
CSA	300 V	10 A	24 - 14 AWG
Solder Pin	0.8 x 1.0 mm		
Drill Hole	1.3 mm		
Wire Strip Length	6.0 mm		
Screw Size	M2.5		



See Technical Data section for screw material options

Approvals:



27.000.2253.01W

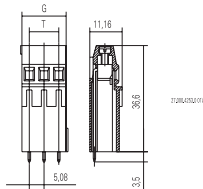
Box Qty	G	T	Pole	Part Number	Part Number	Part Number	Part Number

series 8292 H / DH pitch 5.08 mm				unmarked		unmarked	
Box Qty	G	T	Pole	Part Number	Part Number	Part Number	Part Number
100	10.16	5.08	2	27.000.0253.0		27.000.2253.0	
100	15.24	10.16	3	27.000.0353.0		27.000.2353.0	

PCB terminal series 8292, rising cage clamp system

pitch 5.08 mm

IEC	250 V 4kV cat.3	15 A	0.5 - 1.5 mm ² (Stranded)
	250 V 4kV cat.2		
	500 V 4kV cat.1		
UL	300 V	10 A	24 - 14 AWG
CSA	300 V	10 A	24 - 14 AWG
Solder Pin	0.8 x 1.0 mm		
Drill Hole	1.3 mm		
Wire Strip Length	6.0 mm		
Screw Size	M2.5		



See Technical Data section for screw material options

Approvals:



Box Qty	G	T	Pole	Part Number	Part Number	Part Number	Part Number

series 8292 EH pitch 5.08 mm				unmarked			
Box Qty	G	T	Pole	Part Number	Part Number	Part Number	Part Number
100	10.16	5.08	2	27.000.4253.0			
100	15.24	10.16	3	27.000.4353.0			

PCB terminal series 8192 / 8292, rising cage clamp system

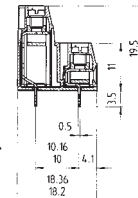
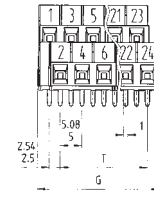
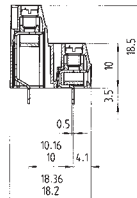
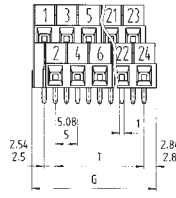
pitch 5.00 / 5.08 mm

IEC	250 V 4kV cat.3 690 V 4kV cat.2 1000 V 4kV cat.1	10 A	0.14 - 1.5 mm ² (Stranded) 0.14 - 2.5 mm ² (Solid)
UL	300 V	15 A (Field) 16 A (Factory)	30 - 14 AWG
CSA	300 V	15 A	30 - 14 AWG
Solder Pin	0.5 x 1.0 mm		
Drill Hole	1.2 mm		
Wire Strip Length	6.0 mm		
Screw Size	M3		



See Technical Data section for screw material options

Approvals:



series 8192 E pitch 5.00 mm

Box Qty	G	T	Pole
50	13.05	5	4
50	18.05	10	6
50	23.05	15	8
50	28.05	20	10
50	33.05	25	12
50	38.05	30	14
50	43.05	35	16
50	48.05	40	18
50	53.05	45	20
50	58.05	50	22
50	63.05	55	24

unmarked without insulating plate

Part Number
25.198.5253.0
25.198.5353.0
25.198.5453.0
25.198.5553.0
25.198.5653.0
25.198.5753.0
25.198.5853.0
25.198.5953.0
25.198.6053.0
25.198.6153.0
25.198.6253.0

marked without insulating plate

Part Number
25.198.0253.0
25.198.0353.0
25.198.0453.0
25.198.0553.0
25.198.0653.0
25.198.0753.0
25.198.0853.0
25.198.0953.0
25.198.1053.0
25.198.1153.0
25.198.1253.0

unmarked with insulating plate with locating cams

Part Number
25.198.9253.0
25.198.9353.0

marked with insulating plate with locating cams

Part Number
25.198.4253.0
25.198.4353.0

series 8292 E pitch 5.08 mm

Box Qty	G	T	Pole
50	13.25	5.08	4
50	18.33	10.16	6
50	23.41	15.24	8
50	28.49	20.32	10
50	33.57	25.40	12
50	38.65	30.48	14
50	43.73	35.56	16
50	48.81	40.64	18
50	53.89	45.72	20
50	58.97	50.80	22
50	64.05	55.88	24

unmarked without insulating plate

Part Number
25.199.5253.0
25.199.5353.0
25.199.5453.0
25.199.5553.0
25.199.5653.0
25.199.5753.0
25.199.5853.0
25.199.5953.0
25.199.6053.0
25.199.6153.0
25.199.6253.0

marked without insulating plate

Part Number
25.199.0253.0
25.199.0353.0
25.199.0453.0
25.199.0553.0
25.199.0653.0
25.199.0753.0
25.199.0853.0
25.199.0953.0
25.199.1053.0
25.199.1153.0
25.199.1253.0

unmarked with insulating plate with locating cams

Part Number
25.199.9253.0
25.199.9353.0

marked with insulating plate with locating cams

Part Number
25.199.4253.0
25.199.4353.0

PCB terminal series 8191 / 8291, rising cage clamp system

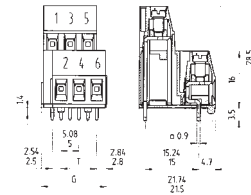
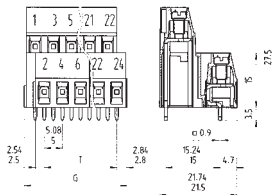
pitch 5.00 / 5.08 mm

IEC	250 V 4kV cat.3 690 V 4kV cat.2 1000 V 4kV cat.1	16 A	0.14 - 2.5 mm ² (Stranded) 0.14 - 4.0 mm ² (Solid)
UL	300 V	20 A (Field) 30 A (Factory)	22 - 12 AWG
CSA	300 V	25 A	22 - 12 AWG
Solder Pin	0.9 x 0.9 mm		
Drill Hole	1.3 mm		
Wire Strip Length	6.5 mm		
Screw Size	M3		



See Technical Data section for screw material options

Approvals:



series 8191 E pitch 5.00 mm

Box Qty	G	T	Pole
50	13.05	5	4
50	18.05	10	6
50	23.05	15	8
50	28.05	20	10
50	33.05	25	12
50	38.05	30	14
50	43.05	35	16
50	48.05	40	18
50	53.05	45	20
50	58.05	50	22
50	63.05	55	24

unmarked without insulating plate	marked without insulating plate	unmarked with insulating plate with locating cams	marked with insulating plate with locating cams
Part Number	Part Number	Part Number	Part Number
25.178.5253.0	25.178.0253.0	25.178.9253.0	25.178.4253.0
25.178.5353.0	25.178.0353.0	25.178.9353.0	25.178.4353.0
25.178.5453.0	25.178.0453.0		
25.178.5553.0	25.178.0553.0		
25.178.5653.0	25.178.0653.0		
25.178.5753.0	25.178.0753.0		
25.178.5853.0	25.178.0853.0		
25.178.5953.0	25.178.0953.0		
25.178.6053.0	25.178.1053.0		
25.178.6153.0	25.178.1153.0		
25.178.6253.0	25.178.1253.0		

series 8291 E pitch 5.08 mm

Box Qty	G	T	Pole
50	13.25	5.08	4
50	18.33	10.16	6
50	23.41	15.24	8
50	28.49	20.32	10
50	33.57	25.40	12
50	38.65	30.48	14
50	43.73	35.56	16
50	48.81	40.64	18
50	53.89	45.72	20
50	58.97	50.80	22
50	64.05	55.88	24

unmarked without insulating plate	marked without insulating plate	unmarked with insulating plate with locating cams	marked with insulating plate with locating cams
Part Number	Part Number	Part Number	Part Number
25.179.5253.0	25.179.0253.0	25.179.9253.0	25.179.4253.0
25.179.5353.0	25.179.0353.0	25.179.9353.0	25.179.4353.0
25.179.5453.0	25.179.0453.0		
25.179.5553.0	25.179.0553.0		
25.179.5653.0	25.179.0653.0		
25.179.5753.0	25.179.0753.0		
25.179.5853.0	25.179.0853.0		
25.179.5953.0	25.179.0953.0		
25.179.6053.0	25.179.1053.0		
25.179.6153.0	25.179.1153.0		
25.179.6253.0	25.179.1253.0		

Custom Marking Available
More poles available on request

PCB terminal series 8190, rising cage clamp system

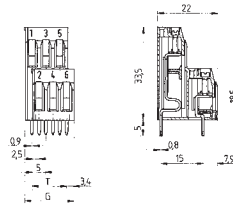
pitch 5.00 mm

IEC	250 V 4kV cat.3	16 A	0.14 - 2.5 mm ² (Stranded)
	690 V 4kV cat.2		0.14 - 4.0 mm ² (Solid)
	1000 V 4kV cat.1		
UL	300 V	15 A	22 - 12 AWG
CSA	300 V	10 A	22 - 14 AWG
Solder Pin	0.8 x 0.9 mm		
Drill Hole	1.2 mm		
Wire Strip Length	6.5 mm		
Screw Size	M2.5		



See Technical Data section for screw material options

Approvals:



series 8190 E pitch 5.00 mm					unmarked	marked		
Box Qty	G	T	Pole	Part Number	Part Number	Part Number	Part Number	
50	13.36	5	4	25.131.3253.0	25.130.3253.0			
50	18.36	10	6	25.131.3353.0	25.130.3353.0			
50	23.36	15	8	25.131.3453.0	25.130.3453.0			
50	28.36	20	10	25.131.3553.0	25.130.3553.0			
50	33.36	25	12	25.131.3653.0	25.130.3653.0			
50	38.36	30	14	25.131.3753.0	25.130.3753.0			
50	43.36	35	16	25.131.3853.0	25.130.3853.0			
50	48.36	40	18	25.131.3953.0	25.130.3953.0			
50	53.36	45	20	25.131.4053.0	25.130.4053.0			
50	58.36	50	22	25.131.4153.0	25.130.4153.0			
50	63.36	55	24	25.131.4253.0	25.130.4253.0			

Box Qty	G	T	Pole	Part Number	Part Number	Part Number	Part Number

PCB terminal series 8191 / 8291, rising cage clamp system

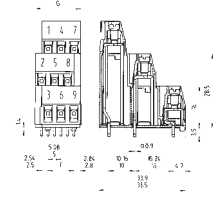
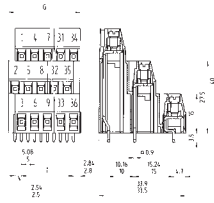
pitch 5.00 / 5.08 mm

IEC	250 V 4kV cat.3 690 V 4kV cat.2 1000 V 4kV cat.1	16 A	0.14 - 2.5 mm ² (Stranded) 0.14 - 4.0 mm ² (Solid)
UL	300 V	20 A (Field) 30 A (Factory)	22 - 12 AWG
CSA	300 V	25 A	22 - 12 AWG
Solder Pin	0.9 x 0.9 mm		
Drill Hole	1.3 mm		
Wire Strip Length	6.5 mm		
Screw Size	M3		



See Technical Data section for screw material options

Approvals:



series 8191 D pitch 5.00 mm				unmarked without insulating plate	marked without insulating plate	unmarked with insulating plate with locating cams	marked with insulating plate with locating cams
Box Qty	G	T	Pole	Part Number	Part Number	Part Number	Part Number
50	12.8	5	6	25.180.5253.0	25.180.0253.0	25.180.9253.0	25.180.4253.0
50	17.8	10	9	25.180.5353.0	25.180.0353.0	25.180.9353.0	25.180.4353.0
50	22.8	15	12	25.180.5453.0	25.180.0453.0		
50	27.8	20	15	25.180.5553.0	25.180.0553.0		
50	32.8	25	18	25.180.5653.0	25.180.0653.0		
50	37.8	30	21	25.180.5753.0	25.180.0753.0		
50	42.8	35	24	25.180.5853.0	25.180.0853.0		
50	47.8	40	27	25.180.5953.0	25.180.0953.0		
50	52.8	45	30	25.180.6053.0	25.180.1053.0		
50	57.8	50	33	25.180.6153.0	25.180.1153.0		
50	62.8	55	36	25.180.6253.0	25.180.1253.0		

series 8291 D pitch 5.08 mm				unmarked without insulating plate	marked without insulating plate	unmarked with insulating plate with locating cams	marked with insulating plate with locating cams
Box Qty	G	T	Pole	Part Number	Part Number	Part Number	Part Number
50	12.70	5.08	6	25.181.5253.0	25.181.0253.0	25.181.9253.0	25.181.4253.0
50	17.78	10.16	9	25.181.5353.0	25.181.0353.0	25.181.9353.0	25.181.4353.0
50	22.86	15.24	12	25.181.5453.0	25.181.0453.0		
50	27.94	20.32	15	25.181.5553.0	25.181.0553.0		
50	33.02	25.40	18	25.181.5653.0	25.181.0653.0		
50	38.10	30.48	21	25.181.5753.0	25.181.0753.0		
50	43.18	35.56	24	25.181.5853.0	25.181.0853.0		
50	48.26	40.64	27	25.181.5953.0	25.181.0953.0		
50	53.34	45.72	30	25.181.6053.0	25.181.1053.0		
50	58.42	50.80	33	25.181.6153.0	25.181.1153.0		
50	63.50	55.88	36	25.181.6253.0	25.181.1253.0		

Custom Marking Available
More poles available on request

PCB terminal series 7386, TOP connection system

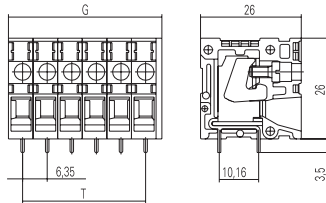
pitch 6.35 mm

IEC	320 V 4kV cat.3	36 A	0.50 - 4.0 mm ² (Stranded)
	320 V 4kV cat.2		0.50 - 6.0 mm ² (Solid)
	320 V 4kV cat.1		
UL	300 V	30 A	22 - 10 AWG
CSA	300 V	30 A	22 - 10 AWG
Solder Pin	0.8 x 0.9 mm		
Drill Hole	1.3 mm		
Wire Strip Length	13.0 mm		
Screw Size	M3		



See Technical Data section for screw material options

Approvals:



Box Qty	G	T	Pole	Part Number	Part Number	Part Number	Part Number

series 7386 TOP H pitch 6.35 mm				unmarked			
Box Qty	G	T	Pole	Part Number	Part Number	Part Number	Part Number
50	14.20	6.35	2	27.714.0253.0			
50	20.55	12.70	3	27.714.0353.0			
50	26.90	19.05	4	27.714.0453.0			
50	33.25	25.40	5	27.714.0553.0			
50	39.60	31.75	6	27.714.0653.0			
50	45.95	38.10	7	27.714.0753.0			
50	52.30	44.45	8	27.714.0853.0			

PCB terminal series 8391 / 8491, rising cage clamp system

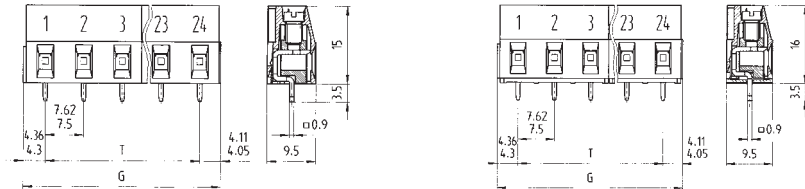
pitch 7.50 / 7.62 mm

IEC	400 V 6kV cat.3	16 A	0.14 - 2.5 mm ² (Stranded)
	1000 V 6kV cat.2		0.14 - 4.0 mm ² (Solid)
	1000 V 6kV cat.1		
UL	300 V	20 A (Field)	22 - 12 AWG
		30 A (Factory)	
CSA	300 V	25 A	22 - 12 AWG
Solder Pin	0.9 x 0.9 mm		
Drill Hole	1.3 mm		
Wire Strip Length	6.5 mm		
Screw Size	M3		



See Technical Data section for screw material options

Approvals:



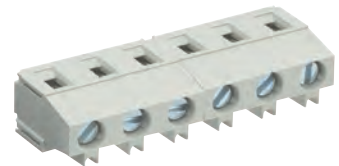
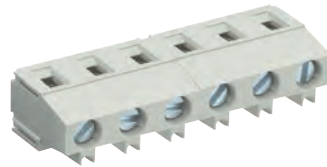
series 8391 pitch 7.50 mm				unmarked without insulating plate	marked with insulating plate without locating cams	unmarked with insulating plate with locating cams	marked without insulating plate
Box Qty	G	T	Pole	Part Number	Part Number	Part Number	Part Number
100	15.85	7.50	2	25.165.0253.0	25.165.3253.0	25.175.0253.0	25.164.0253.0
100	23.35	15.0	3	25.165.0353.0	25.165.3353.0	25.175.0353.0	25.164.0353.0

series 8491 pitch 7.62 mm				unmarked without insulating plate	marked with insulating plate without locating cams	unmarked with insulating plate with locating cams	marked without insulating plate
Box Qty	G	T	Pole	Part Number	Part Number	Part Number	Part Number
100	16.09	7.62	2	25.167.0253.0	25.167.3253.0	25.177.0253.0	25.166.0253.0
100	23.71	15.24	3	25.167.0353.0	25.167.3353.0	25.177.0353.0	25.166.0353.0

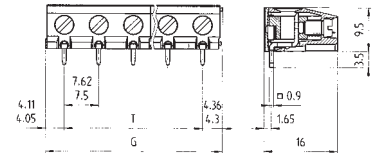
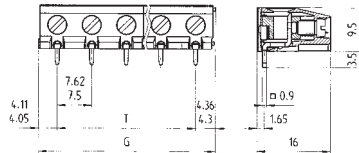
PCB terminal series 8391 / 8491, rising cage clamp system

pitch 7.50 / 7.62 mm

IEC	400 V 6kV cat.3 1000 V 6kV cat.2 1000 V 6kV cat.1	16 A	0.14 - 2.5 mm ² (Stranded) 0.14 - 4.0 mm ² (Solid)
UL	300 V	20 A (Field) 30 A (Factory)	22 - 12 AWG
CSA	300 V	25 A	22 - 12 AWG
Solder Pin	0.9 x 0.9 mm		
Drill Hole	1.3 mm		
Wire Strip Length	6.5 mm		
Screw Size	M3		



See Technical Data section for screw material options



Approvals:



series 8391 ZW pitch 7.50 mm				unmarked with insulating plate without locating cams	marked with insulating plate with locating cams	unmarked with insulating plate	marked with insulating plate
Box Qty	G	T	Pole	Part Number	Part Number	Part Number	Part Number
100	15.85	7.50	2	25.164.3253.0	25.174.0253.0	25.165.6253.0	25.164.6253.0
100	23.35	15.0	3	25.164.3353.0	25.174.0353.0	25.165.6353.0	25.164.6353.0

series 8491 ZW pitch 7.62 mm				unmarked with insulating plate without locating cams	marked with insulating plate with locating cams	unmarked with insulating plate	marked with insulating plate
Box Qty	G	T	Pole	Part Number	Part Number	Part Number	Part Number
100	16.09	7.62	2	25.166.3253.0	25.176.0253.0	25.167.6253.0	25.166.6253.0
100	23.71	15.24	3	25.166.3353.0	25.176.0353.0	25.167.6353.0	25.166.6353.0

PCB terminal series 8385 / 8485, TOP connection system

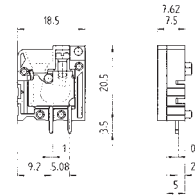
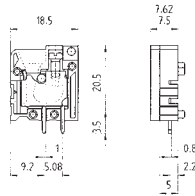
pitch 7.50 / 7.62 mm

IEC	400 V 4kV cat.3 1000 V 4kV cat.2 1000 V 4kV cat.1	16 A	0.14 - 2.5 mm ² (Stranded) 0.14 - 4.0 mm ² (Solid)
UL	300 V	20 A (Field) 25 A (Factory)	22 - 12 AWG 30 - 12 AWG
CSA	300 V	25 A	22 - 12 AWG
Solder Pin	0.8 x 1.0 mm		
Drill Hole	1.3 mm		
Wire Strip Length	9.0 mm		
Screw Size	M2.5		



See Technical Data section for screw material options

Approvals:



series 8385 TOP V pitch 7.50 mm				Individual poles connected in series (1 pole)		Individual poles connected in series (end plate)	
Box Qty	G	T	Pole	Part Number	Part Number	Part Number	Part Number
100			2	25.761.0253.0		25.761.0053.0	07.300.4753.0
100			3	25.761.0353.0			
50			4	25.761.0453.0			
50			5	25.761.0553.0			
50			6	25.761.0653.0			
50			7	25.761.0753.0			
50			8	25.761.0853.0			

series 8485 TOP V pitch 7.62 mm				Individual poles connected in series (1 pole)		Individual poles connected in series (end plate)	
Box Qty	G	T	Pole	Part Number	Part Number	Part Number	Part Number
100			2	25.771.0253.0		25.771.0053.0	07.300.4753.0
100			3	25.771.0353.0			
50			4	25.771.0453.0			
50			5	25.771.0553.0			
50			6	25.771.0653.0			
50			7	25.771.0753.0			
50			8	25.771.0853.0			

PCB terminal series 8385 / 8485, TOP connection system

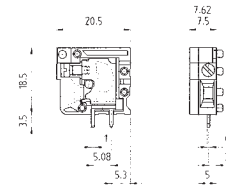
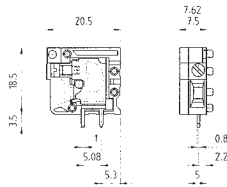
pitch 7.50 / 7.62 mm

IEC	400 V 6kV cat.3 1000 V 6kV cat.2 1000 V 6kV cat.1	16 A	0.14 - 2.5 mm ² (Stranded) 0.14 - 4.0 mm ² (Solid)
UL	300 V	20 A (Field) 25 A (Factory)	22 - 12 AWG 30 - 12 AWG
CSA	300 V	25 A	22 - 12 AWG
Solder Pin	0.8 x 1.0 mm		
Drill Hole	1.3 mm		
Wire Strip Length	9.0 mm		
Screw Size	M2.5		



See Technical Data section for screw material options

Approvals:



series 8385 TOP H pitch 7.50 mm				Individual poles connected in series (1 pole)		Individual poles connected in series (end plate)	
Box Qty	G	T	Pole	Part Number	Part Number	Part Number	Part Number
100			2	25.761.3253.0		25.761.0153.0	07.300.4753.0
100			3	25.761.3353.0			
50			4	25.761.3453.0			
50			5	25.761.3553.0			
50			6	25.761.3653.0			
50			7	25.761.3753.0			
50			8	25.761.3853.0			

series 8485 TOP H pitch 7.62 mm				Individual poles connected in series (1 pole)		Individual poles connected in series (end plate)	
Box Qty	G	T	Pole	Part Number	Part Number	Part Number	Part Number
100			2	25.771.3253.0		25.771.0153.0	07.300.4753.0
100			3	25.771.3353.0			
50			4	25.771.3453.0			
50			5	25.771.3553.0			
50			6	25.771.3653.0			
50			7	25.771.3753.0			
50			8	25.771.3853.0			

PCB terminal series 8486, TOP connection system

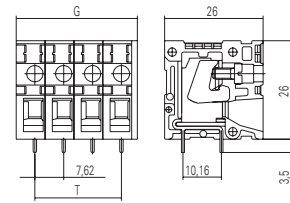
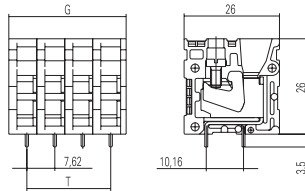
pitch 7.62 mm

IEC	500 V 4kV cat.3	36 A	0.50 - 4.0 mm ² (Stranded)
	630 V 4kV cat.2		0.50 - 6.0 mm ² (Solid)
	1000 V 4kV cat.1		
UL	300 V	30 A	22 - 10 AWG
CSA	300 V	30 A	22 - 10 AWG
Solder Pin	0.8 x 0.9 mm		
Drill Hole	1.3 mm		
Wire Strip Length	13 mm		
Screw Size	M3		



See Technical Data section for screw material options

Approvals:



Box Qty	G	T	Pole	Part Number	Part Number	Part Number	Part Number

series 8486 TOP V/H pitch 7.62 mm				unmarked		unmarked	
Box Qty	G	T	Pole	Part Number	Part Number	Part Number	Part Number
50	16.74	7.62	2	27.703.0253.0		27.713.0253.0	
50	24.36	15.24	3	27.703.0353.0		27.713.0353.0	
50	31.98	22.86	4	27.703.0453.0		27.713.0453.0	

PCB terminal series 8358, 8458 spring clamp system

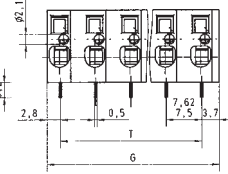
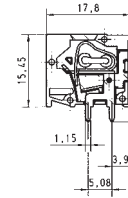
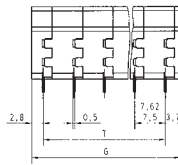
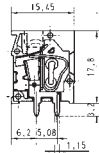
pitch 7.50 / 7.62 mm

IEC	400 V 6kV cat.3 1000 V 6kV cat.2 1000 V 6kV cat.1	16 A	0.14 - 2.5 mm ² (Stranded) 0.14 - 4.0 mm ² (Solid)
UL			22 - 12 AWG 30 - 12 AWG
CSA			22 - 12 AWG
Solder Pin			0.5 x 1.15 mm
Drill Hole			1.3 mm
Wire Strip Length			9.0 mm



See Technical Data section for screw material options

Approvals:



series 8358 TOP V/H pitch 7.50 mm

Box Qty	G	T	Pole	Part Number	Part Number	Part Number	Part Number
100			2	25.782.0253.0		25.792.0253.0	
100			3	25.782.0353.0		25.792.0353.0	
50			4	25.782.0453.0		25.792.0453.0	
50			5	25.782.0553.0		25.792.0553.0	
50			6	25.782.0653.0		25.792.0653.0	
50			7	25.782.0753.0		25.792.0753.0	
50			8	25.782.0853.0		25.792.0853.0	
50			9	25.782.0953.0		25.792.0953.0	
50			10	25.782.1053.0		25.792.1053.0	
50			11	25.782.1153.0		25.792.1153.0	
50			12	25.782.1253.0		25.792.1253.0	
50			13	25.782.1353.0		25.792.1353.0	
50			14	25.782.1453.0		25.792.1453.0	
50			15	25.782.1553.0		25.792.1553.0	
50			16	25.782.1653.0		25.792.1653.0	

series 8458 TOP V/H pitch 7.62 mm

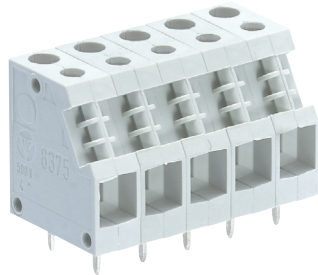
Box Qty	G	T	Pole	Part Number	Part Number	Part Number	Part Number
100			2	25.783.0253.0		25.793.0253.0	
100			3	25.783.0353.0		25.793.0353.0	
50			4	25.783.0453.0		25.793.0453.0	
50			5	25.783.0553.0		25.793.0553.0	
50			6	25.783.0653.0		25.793.0653.0	
50			7	25.783.0753.0		25.793.0753.0	
50			8	25.783.0853.0		25.793.0853.0	
50			9	25.783.0953.0		25.793.0953.0	
50			10	25.783.1053.0		25.793.1053.0	
50			11	25.783.1153.0		25.793.1153.0	
50			12	25.783.1253.0		25.793.1253.0	
50			13	25.783.1353.0		25.793.1353.0	
50			14	25.783.1453.0		25.793.1453.0	
50			15	25.783.1553.0		25.793.1553.0	
50			16	25.783.1653.0		25.793.1653.0	

Custom Marking Available
More poles available on request

PCB terminal series 8375, rising cage clamp system

pitch 7.50 / 10.00 mm

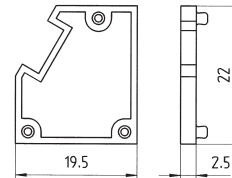
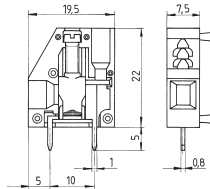
IEC	500 V 6kV cat.3	30 A	0.14 - 4.0 mm ² (Stranded)
	1000 V 6kV cat.2		0.14 - 6.0 mm ² (Solid)
	1000 V 6kV cat.1		
UL	300 V	30 A (Field)	22 - 10 AWG
		35 A (Factory)	30 - 10 AWG
CSA	300 V	30 A	22 - 10 AWG



Solder Pin	0.8 x 1.0 mm
Drill Hole	1.3 mm
Wire Strip Length	9.0 mm
Screw Size	M3

See Technical Data section for screw material options

Approvals:



series 8375 pitch 7.50 mm

Box Qty	G	T	Pole	Part Number	Part Number	Part Number	Part Number
100			1	25.700.0153.0			
100			2	25.700.0253.0			

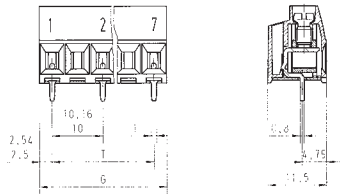
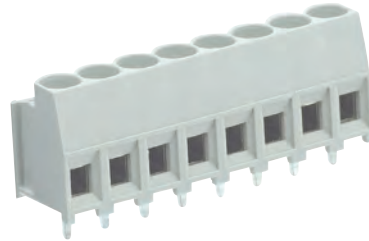
Pitch intermediate plate increase pitch 10.00 mm

Box Qty	G	T	Pole	Part Number	Part Number	Part Number	Part Number
50			1			07.300.2753.0	

PCB terminal series 8191 / 8291, rising cage clamp system

pitch 10.00 / 10.16 mm

IEC	690 V <small>8kV cat.3</small> 1000 V <small>8kV cat.2</small> 1000 V <small>8kV cat.1</small>	16 A	0.14 - 2.5 mm ² (Stranded) 0.14 - 4.0 mm ² (Solid)
UL	600 V	20 A (Field) 30 A (Factory)	22 - 12 AWG
CSA	600 V	25 A	22 - 12 AWG
Solder Pin	0.9 x 0.9 mm		
Drill Hole	1.3 mm		
Wire Strip Length	6.5 mm		
Screw Size	M3		



See Technical Data section for screw material options

Approvals:



series 8191 R pitch 10.00 mm				unmarked with insulating plate	marked with insulating plate	Part Number	Part Number
Box Qty	G	T	Pole	Part Number	Part Number	Part Number	Part Number
500	15	10	2	25.157.0253.0	25.157.1253.0		
250	25	20	3	25.157.0353.0	25.157.1353.0		
200	35	30	4	25.157.0453.0	25.157.1453.0		
100	45	40	5	25.157.0553.0	25.157.1553.0		
50	55	50	6	25.157.0653.0	25.157.1653.0		
50	65	60	7	25.157.0753.0	25.157.1753.0		

series 8291 R pitch 10.16 mm				unmarked with insulating plate	marked with insulating plate	Part Number	Part Number
Box Qty	G	T	Pole	Part Number	Part Number	Part Number	Part Number
500	15.24	10.16	2	25.157.4253.0	25.157.5253.0		
250	25.40	20.32	3	25.157.4353.0	25.157.5353.0		
200	35.56	30.48	4	25.157.4453.0	25.157.5453.0		
100	45.72	40.64	5	25.157.4553.0	25.157.5553.0		
50	55.88	50.80	6	25.157.4653.0	25.157.5653.0		
50	66.04	60.96	7	25.157.4753.0	25.157.5753.0		

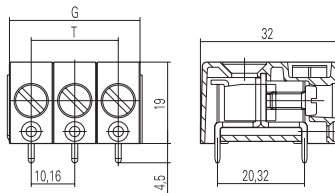
PCB screw terminal series 7573, rising cage clamp system

pitch 10.16 mm

IEC	400 V 6kV cat.3	59 A	0.50 - 10.0 mm ² (Stranded)
	690 V 6kV cat.2		0.50 - 10.0 mm ² (Solid)
	1000 V 6kV cat.1		
UL	300 V	50 A	22 - 8 AWG
CSA	300 V	50 A	22 - 8 AWG
Solder Pin	1.2 x 1.4 mm		
Drill Hole	1.6 mm		
Wire Strip Length	10.0 mm		
Screw Size	M4		



See Technical Data section for screw material options



Approvals:



Box Qty	G	T	Pole	Part Number	Part Number	Part Number	Part Number

series 7573 L2/W pitch 10.16 mm				unmarked			
Box Qty	G	T	Pole	Part Number	Part Number	Part Number	Part Number
50	10.16		1	27.002.6153.0			
50	30.48	20.32	3	27.002.6353.0			
50	40.64	30.48	4	27.002.6453.0			

PCB terminal series 7572, rising cage clamp system

pitch 10.16 mm

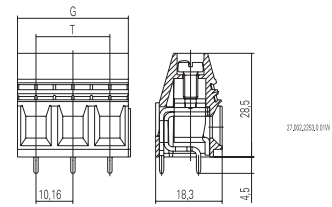
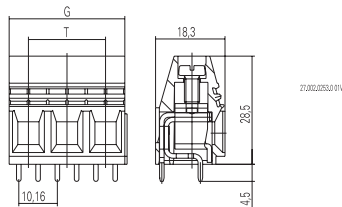
IEC	250 V 4kV cat.3	57 A	0.50 - 10.0 mm ² (Stranded)
	400 V 4kV cat.2		0.50 - 16.0 mm ² (Solid)
	630 V 4kV cat.1		
UL	300 V (Field)	10 A (Field)	22 - 8 AWG
	150 V (Factory)	40 A (Factory)	
CSA	300 V	50 A	22 - 8 AWG

Solder Pin	1.2 x 1.2 mm
Drill Hole	1.6 mm
Wire Strip Length	12.0 mm
Screw Size	M4



See Technical Data section for screw material options

Approvals:



Box Qty	G	T	Pole	Part Number	Part Number	Part Number	Part Number

series 7572 L4/L2 pitch 10.16 mm				unmarked		unmarked	
Box Qty	G	T	Pole	Part Number	Part Number	Part Number	Part Number
50	20.32	10.16	2	27.002.0253.0		27.002.2253.0	
50	30.48	20.32	3	27.002.0353.0		27.002.2353.0	

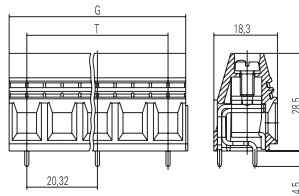
PCB terminal series 7572, rising cage clamp system

pitch 20.32 mm

IEC	1000 V <small>8kV cat.3</small>	57 A	0.50 - 10.0 mm ² (Stranded) 0.50 - 16.0 mm ² (Solid)
UL	600 V	60 A	22 - 6 AWG
CSA		50 A	22 - 8 AWG
Solder Pin			1.2 x 1.2 mm
Drill Hole			1.6 mm
Wire Strip Length			12.0 mm
Screw Size			M4



See Technical Data section for screw material options



Approvals:



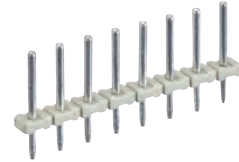
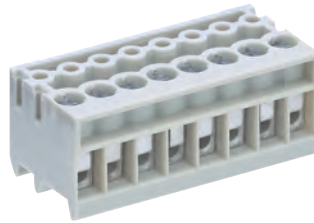
Box Qty	G	T	Pole	Part Number	Part Number	Part Number	Part Number

series 7572 L2 pitch 20.32 mm				unmarked			
Box Qty	G	T	Pole	Part Number	Part Number	Part Number	Part Number
50	30.48	20.32	2	27.002.4253.0			
50	50.64	40.48	3	27.002.4353.0			

PCB screw terminal series 8543, two part PCB terminal

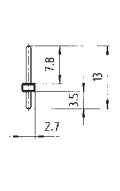
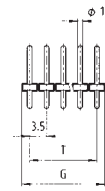
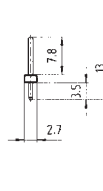
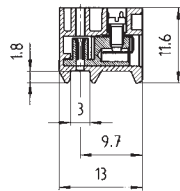
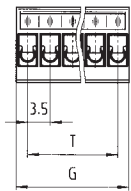
pitch 3.50 mm

IEC	160 V 2.5kV cat.3 250 V 2.5kV cat.2 690 V 2.5kV cat.1	6 A	0.14 - 1.0 mm ² (Stranded) 0.14 - 1.5 mm ² (Solid)
UL	300 V	10 A	22 -16 AWG
CSA	300 V	10 A	22 -16 AWG
Solder Pin	1.0 x 1.0 mm		
Drill Hole	1.3 mm		
Wire Strip Length	5 mm		
Screw Size	M2		



See Technical Data section for screw material options

Approvals:



series 8543 pitch 3.50 mm

Box Qty	G	T	Pole
100	7.0	3.5	2
100	10.5	7.0	3
50	14.0	10.5	4
50	17.5	14.0	5
50	21.0	17.5	6
50	24.5	21.0	7
50	28.0	24.5	8
50	31.5	28.0	9
50	35.0	31.5	10
50	38.5	35.0	11
50	42.0	38.5	12
50	45.5	42.0	13
50	49.0	45.5	14
50	52.5	49.0	15
50	56.0	52.5	16

unmarked	marked	Grey pin Ø 0.8 mm	Black pin Ø 1.0 mm
Part Number	Part Number	Part Number	Part Number
25.602.5253.0	25.600.5253.0	Z5.531.0225.0	Z5.531.3225.0
25.602.5353.0	25.600.5353.0	Z5.531.0325.0	Z5.531.3325.0
25.602.5453.0	25.600.5453.0	Z5.531.0425.0	Z5.531.3425.0
25.602.5553.0	25.600.5553.0	Z5.531.0525.0	Z5.531.3525.0
25.602.5653.0	25.600.5653.0	Z5.531.0625.0	Z5.531.3625.0
25.602.5753.0	25.600.5753.0	Z5.531.0725.0	Z5.531.3725.0
25.602.5853.0	25.600.5853.0	Z5.531.0825.0	Z5.531.3825.0
25.602.5953.0	25.600.5953.0	Z5.531.0925.0	Z5.531.3925.0
25.602.6053.0	25.600.6053.0	Z5.531.1025.0	Z5.531.4025.0
25.602.6153.0	25.600.6153.0	Z5.531.1125.0	Z5.531.4125.0
25.602.6253.0	25.600.6253.0	Z5.531.1225.0	Z5.531.4225.0
25.602.6353.0	25.600.6353.0	Z5.531.1325.0	Z5.531.4325.0
25.602.6453.0	25.600.6453.0	Z5.531.1425.0	Z5.531.4425.0
25.602.6553.0	25.600.6553.0	Z5.531.1525.0	Z5.531.4525.0
25.602.6653.0	25.600.6653.0	Z5.531.1625.0	Z5.531.4625.0

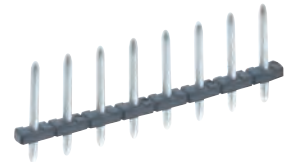
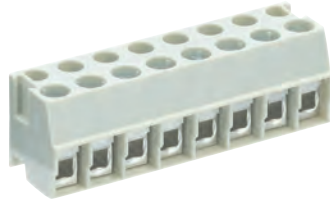
Box Qty	G	T	Pole	Part Number	Part Number	Part Number	Part Number

PCB screw terminal series 8142, two part PCB terminal wire guard clamp

pitch 5.00 mm

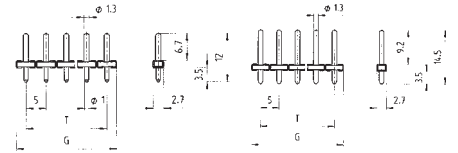
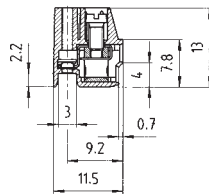
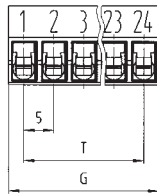
IEC	200 V 4kV cat.3	8 A	0.14 - 2.5 mm ² (Stranded)
	250 V 4kV cat.2		0.14 - 4.0 mm ² (Solid)
	1000 V 4kV cat.1		
UL	300 V	15 A	22 -12 AWG
CSA	300 V	15 A	22 -12 AWG

Solder Pin	1.0 x 1.0 mm
Drill Hole	1.3 mm
Wire Strip Length	5 mm
Screw Size	M2.5



See Technical Data section for screw material options

Approvals:



series 8142 OB
pitch 5.00 mm

Box Qty	G	T	Pole
100	10	5	2
100	15	10	3
50	20	15	4
50	25	20	5
50	30	25	6
50	35	30	7
50	40	35	8
50	45	40	9
50	50	45	10
50	55	50	11
50	60	55	12
50	65	60	13
50	70	65	14
50	75	70	15
50	80	75	16

unmarked	marked	Grey pin Ø 1.0 mm	Black pin Ø 1.3 mm
Part Number	Part Number	Part Number	Part Number
25.602.2253.0	25.600.2253.0	Z5.530.0225.0	Z5.530.3225.0
25.602.2353.0	25.600.2353.0	Z5.530.0325.0	Z5.530.3325.0
25.602.2453.0	25.600.2453.0	Z5.530.0425.0	Z5.530.3425.0
25.602.2553.0	25.600.2553.0	Z5.530.0525.0	Z5.530.3525.0
25.602.2653.0	25.600.2653.0	Z5.530.0625.0	Z5.530.3625.0
25.602.2753.0	25.600.2753.0	Z5.530.0725.0	Z5.530.3725.0
25.602.2853.0	25.600.2853.0	Z5.530.0825.0	Z5.530.3825.0
25.602.2953.0	25.600.2953.0	Z5.530.0925.0	Z5.530.3925.0
25.602.3053.0	25.600.3053.0	Z5.530.1025.0	Z5.530.4025.0
25.602.3153.0	25.600.3153.0	Z5.530.1125.0	Z5.530.4125.0
25.602.3253.0	25.600.3253.0	Z5.530.1225.0	Z5.530.4225.0
25.602.3353.0	25.600.3353.0	Z5.530.1325.0	Z5.530.4325.0
25.602.3453.0	25.600.3453.0	Z5.530.1425.0	Z5.530.4425.0
25.602.3553.0	25.600.3553.0	Z5.530.1525.0	Z5.530.4525.0
25.602.3653.0	25.600.3653.0	Z5.530.1625.0	Z5.530.4625.0

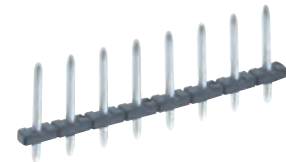
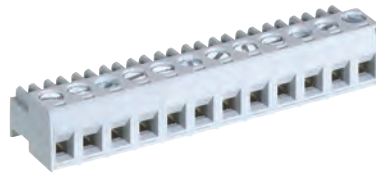
Box Qty	G	T	Pole	Part Number	Part Number	Part Number	Part Number

Custom Marking Available
More poles available on request

PCB screw terminal series 8142, two part PCB terminal raising cage clamp

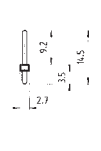
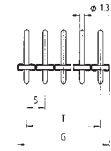
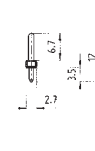
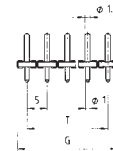
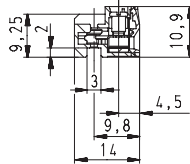
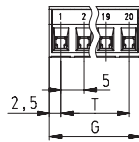
pitch 5.00 mm

IEC	250 V 2.5kV cat.3		0.5 - 2.5 mm ² (Stranded) 0.5 - 2.5 mm ² (Solid)
UL	300 V	3 A (PR) 10 A (PR HC)	22 -12 AWG
CSA	300 V	15 A 10 A (PR HC)	22 -12 AWG
Solder Pin			1.0 x 1.0 mm
Drill Hole			1.3 mm
Wire Strip Length			6 mm
Screw Size			M3



See Technical Data section for screw material options

Approvals:



series 8142 Z PR / PR HC OB pitch 5.00 mm

Box Qty	G	T	Pole
100	10	5	2
100	15	10	3
50	20	15	4
50	25	20	5
50	30	25	6
50	35	30	7
50	40	35	8
50	45	40	9
50	50	45	10
50	55	50	11
50	60	55	12
50	65	60	13
50	70	65	14
50	75	70	15
50	80	75	16

PR (3 A)
pull out force
< 2,5 Nm/Pin

PR HC (10 A)
pull out force < 6 Nm/Pin

Grey
pin Ø 1.0 mm

Black
pin Ø 1.3 mm

Part Number	Part Number	Part Number	Part Number
25.615.0253.3	25.616.0253.3	Z5.530.0225.0	Z5.530.3225.0
25.615.0353.3	25.616.0353.3	Z5.530.0325.0	Z5.530.3325.0
25.615.0453.3	25.616.0453.3	Z5.530.0425.0	Z5.530.3425.0
25.615.0553.3	25.616.0553.3	Z5.530.0525.0	Z5.530.3525.0
25.615.0653.3	25.616.0653.3	Z5.530.0625.0	Z5.530.3625.0
25.615.0753.3	25.616.0753.3	Z5.530.0725.0	Z5.530.3725.0
25.615.0853.3	25.616.0853.3	Z5.530.0825.0	Z5.530.3825.0
25.615.0953.3	25.616.0953.3	Z5.530.0925.0	Z5.530.3925.0
25.615.1053.3	25.616.1053.3	Z5.530.1025.0	Z5.530.4025.0
25.615.1153.3	25.616.1153.3	Z5.530.1125.0	Z5.530.4125.0
25.615.1253.3	25.616.1253.3	Z5.530.1225.0	Z5.530.4225.0
25.615.1353.3	25.616.1353.3	Z5.530.1325.0	Z5.530.4325.0
25.615.1453.3	25.616.1453.3	Z5.530.1425.0	Z5.530.4425.0
25.615.1553.3	25.616.1553.3	Z5.530.1525.0	Z5.530.4525.0
25.615.1653.3	25.616.1653.3	Z5.530.1625.0	Z5.530.4625.0

Box Qty	G	T	Pole	Part Number	Part Number	Part Number	Part Number

PCB screw terminal series 8142, two part PCB terminal raising cage clamp

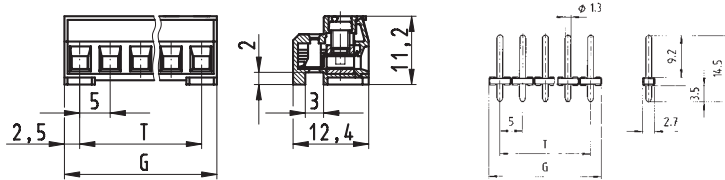
pitch 5.00 mm

IEC	250 V 2.5kV cat.3	8 A (40 °C)	0.14 - 1.5 mm ² (Stranded)
		3 A (70 °C)	0.14 - 1.5 mm ² (Solid)
UL	300 V	8 A	22 -12 AWG
CSA	300 V	5 A	22 -12 AWG
Solder Pin	1.0 x 1.0 mm		
Drill Hole	1.3 mm		
Wire Strip Length	6 mm		
Screw Size	M3		



See Technical Data section for screw material options

Approvals:



series 8142 Z OB pitch 5.00 mm

Box Qty	G	T	Pole
100	10	5	2
100	15	10	3
50	20	15	4
50	25	20	5
50	30	25	6
50	35	30	7
50	40	35	8
50	45	40	9
50	50	45	10
50	55	50	11
50	60	55	12
50	65	60	13
50	70	65	14
50	75	70	15
50	80	75	16

unmarked

THR box

THR tape on reel

Part Number	Part Number	Part Number	Part Number
27.602.0253.0		Z5.530.0204.0	Z5.530.0214.0
27.602.0353.0		Z5.530.0304.0	Z5.530.0314.0
27.602.0453.0		Z5.530.0404.0	Z5.530.0414.0
27.602.0553.0		Z5.530.0504.0	Z5.530.0514.0
27.602.0653.0		Z5.530.0604.0	Z5.530.0614.0
27.602.0753.0		Z5.530.0704.0	Z5.530.0714.0
27.602.0853.0		Z5.530.0804.0	Z5.530.0814.0
27.602.0953.0		Z5.530.0904.0	Z5.530.0914.0
27.602.1053.0		Z5.530.1004.0	Z5.530.1014.0
27.602.1153.0		Z5.530.1104.0	Z5.530.1114.0
27.602.1253.0		Z5.530.1204.0	Z5.530.1214.0
27.602.1353.0			
27.602.1453.0			
27.602.1553.0			
27.602.1653.0			

Box Qty	G	T	Pole	Part Number	Part Number	Part Number	Part Number

PCB screw terminal series 8142, two part PCB terminal raising cage clamp

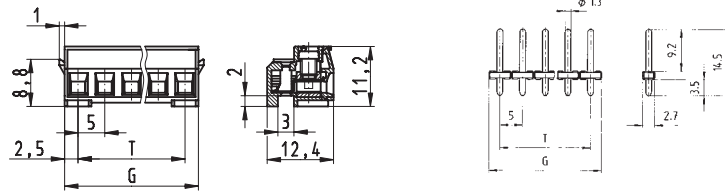
pitch 5.00 mm

IEC	250 V 2.5kV cat.3	8 A (40 °C) 3 A (70 °C)	0.14 - 1.5 mm ² (Stranded) 0.14 - 1.5 mm ² (Solid)
UL	300 V	8 A	22 -12 AWG
CSA	300 V	5 A	22 -12 AWG
Solder Pin	1.0 x 1.0 mm		
Drill Hole	1.3 mm		
Wire Strip Length	6 mm		
Screw Size	M3		



See Technical Data section for screw material options

Approvals:



series 8142 Z F2 OB pitch 5.00 mm

Box Qty	G	T	Pole
100	10	5	2
100	15	10	3
50	20	15	4
50	25	20	5
50	30	25	6
50	35	30	7
50	40	35	8
50	45	40	9
50	50	45	10
50	55	50	11
50	60	55	12
50	65	60	13
50	70	65	14
50	75	70	15
50	80	75	16

unmarked

THR
box

THR
tape on reel

Part Number	Part Number	Part Number	Part Number
27.602.3253.0		Z5.530.0204.0	Z5.530.0214.0
27.602.3353.0		Z5.530.0304.0	Z5.530.0314.0
27.602.3453.0		Z5.530.0404.0	Z5.530.0414.0
27.602.3553.0		Z5.530.0504.0	Z5.530.0514.0
27.602.3653.0		Z5.530.0604.0	Z5.530.0614.0
27.602.3753.0		Z5.530.0704.0	Z5.530.0714.0
27.602.3853.0		Z5.530.0804.0	Z5.530.0814.0
27.602.3953.0		Z5.530.0904.0	Z5.530.0914.0
27.602.4053.0		Z5.530.1004.0	Z5.530.1014.0
27.602.4153.0		Z5.530.1104.0	Z5.530.1114.0
27.602.4253.0		Z5.530.1204.0	Z5.530.1214.0
27.602.4353.0			
27.602.4453.0			
27.602.4553.0			
27.602.4653.0			

Box Qty	G	T	Pole

Part Number	Part Number	Part Number	Part Number

PCB screw terminal series 8142, two part PCB terminal raising cage clamp

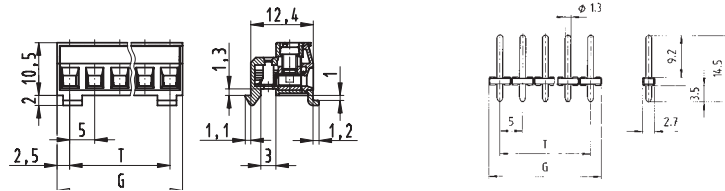
pitch 5.00 mm

IEC	250 V 2.5kV cat.3	8 A (40 °C) 3 A (70 °C)	0.14 - 1.5 mm ² (Stranded) 0.14 - 1.5 mm ² (Solid)
UL	300 V	8 A	22 -12 AWG
CSA	300 V	5 A	22 -12 AWG
Solder Pin	1.0 x 1.0 mm		
Drill Hole	1.3 mm		
Wire Strip Length	6 mm		
Screw Size	M3		



See Technical Data section for screw material options

Approvals:



series 8142 Z RF OB pitch 5.00 mm				unmarked	THR box	THR tape on reel	
Box Qty	G	T	Pole	Part Number	Part Number	Part Number	Part Number
100	10	5	2	27.602.6253.0	Z5.530.0204.0	Z5.530.0214.0	
100	15	10	3	27.602.6353.0	Z5.530.0304.0	Z5.530.0314.0	
50	20	15	4	27.602.6453.0	Z5.530.0404.0	Z5.530.0414.0	
50	25	20	5	27.602.6553.0	Z5.530.0504.0	Z5.530.0514.0	
50	30	25	6	27.602.6653.0	Z5.530.0604.0	Z5.530.0614.0	
50	35	30	7	27.602.6753.0	Z5.530.0704.0	Z5.530.0714.0	
50	40	35	8	27.602.6853.0	Z5.530.0804.0	Z5.530.0814.0	
50	45	40	9	27.602.6953.0	Z5.530.0904.0	Z5.530.0914.0	
50	50	45	10	27.602.7053.0	Z5.530.1004.0	Z5.530.1014.0	
50	55	50	11	27.602.7153.0	Z5.530.1104.0	Z5.530.1114.0	
50	60	55	12	27.602.7253.0	Z5.530.1204.0	Z5.530.1214.0	
50	65	60	13	27.602.7353.0			
50	70	65	14	27.602.7453.0			
50	75	70	15	27.602.7553.0			
50	80	75	16	27.602.7653.0			

Box Qty	G	T	Pole	Part Number	Part Number	Part Number	Part Number

Custom Marking Available
More poles available on request

PCB headers series 8513 / 8813

pitch 3.50 / 3.81 mm

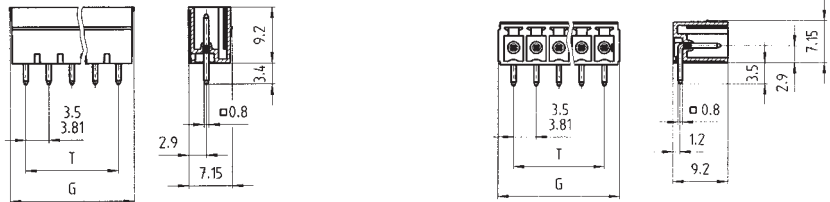
IEC	125 V 2.5kV cat.3	8 A
	250 V 2.5kV cat.2	
	690 V 2.5kV cat.1	
UL	300 V	8 A
CSA	300 V	5 A

Solder Pin 0.8 x 0.8 mm
Drill Hole 1.2 mm



See Technical Data section for screw material options

Approvals:



series 8513 S G/W pitch 3.50 mm

Box Qty	G	T	Pole
100	8.40	3.50	2
100	11.90	7.00	3
50	15.40	10.50	4
50	18.90	14.00	5
50	22.40	17.50	6
50	25.90	21.00	7
50	29.40	24.50	8
50	32.90	28.00	9
50	36.40	31.50	10
50	39.90	35.00	11
50	43.40	38.50	12
50	46.90	42.00	13
50	50.40	45.50	14
50	53.90	49.00	15
50	57.40	52.50	16

unmarked

Part Number	Part Number
25.646.0253.0	
25.646.0353.0	
25.646.0453.0	
25.646.0553.0	
25.646.0653.0	
25.646.0753.0	
25.646.0853.0	
25.646.0953.0	
25.646.1053.0	
25.646.1153.0	
25.646.1253.0	
25.646.1353.0	
25.646.1453.0	
25.646.1553.0	
25.646.1653.0	

unmarked

Part Number	Part Number
25.647.0253.0	
25.647.0353.0	
25.647.0453.0	
25.647.0553.0	
25.647.0653.0	
25.647.0753.0	
25.647.0853.0	
25.647.0953.0	
25.647.1053.0	
25.647.1153.0	
25.647.1253.0	
25.647.1353.0	
25.647.1453.0	
25.647.1553.0	
25.647.1653.0	

series 8813 S G/W pitch 3.81 mm

Box Qty	G	T	Pole
100	9.01	3.81	2
100	12.82	7.62	3
50	16.63	11.43	4
50	20.44	15.24	5
50	24.25	19.05	6
50	28.06	22.86	7
50	31.87	26.67	8
50	35.68	30.48	9
50	39.49	34.29	10
50	43.30	38.10	11
50	47.11	41.91	12
50	50.92	45.72	13
50	54.73	49.53	14
50	58.54	53.34	15
50	62.35	57.15	16

unmarked

Part Number	Part Number
25.626.0253.0	
25.626.0353.0	
25.626.0453.0	
25.626.0553.0	
25.626.0653.0	
25.626.0753.0	
25.626.0853.0	
25.626.0953.0	
25.626.1053.0	
25.626.1153.0	
25.626.1253.0	
25.626.1353.0	
25.626.1453.0	
25.626.1553.0	
25.626.1653.0	

unmarked

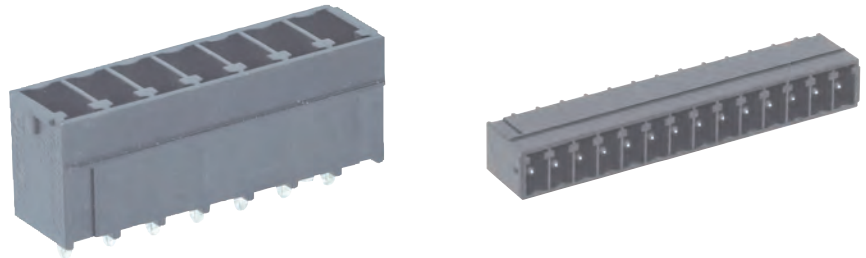
Part Number	Part Number
25.627.0253.0	
25.627.0353.0	
25.627.0453.0	
25.627.0553.0	
25.627.0653.0	
25.627.0753.0	
25.627.0853.0	
25.627.0953.0	
25.627.1053.0	
25.627.1153.0	
25.627.1253.0	
25.627.1353.0	
25.627.1453.0	
25.627.1553.0	
25.627.1653.0	

Custom Marking Available
More poles available on request

PCB headers series 8513, reflow process

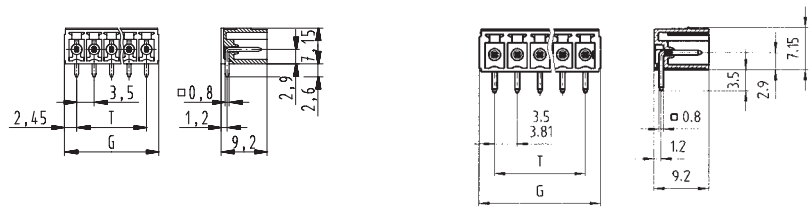
pitch 3.50 mm

IEC	125 V 2.5kV	8 A
UL	300 V	8 A
CSA	300 V	5 A
Solder Pin	0.8 x 0.8 mm	
Drill Hole	1.2 mm	



See Technical Data section for screw material options

Approvals:



series 8513S G/W THR OB pitch 3.50 mm				unmarked box	unmarked tape on reel	unmarked box	unmarked tape on reel
Box Qty	G	T	Pole	Part Number	Part Number	Part Number	Part Number
100	8.40	3.50	2	25.646.0206.0	25.646.0216.0	25.647.0206.0	25.647.0216.0
100	11.90	7.00	3	25.646.0306.0	25.646.0316.0	25.647.0306.0	25.647.0316.0
50	15.40	10.50	4	25.646.0406.0	25.646.0416.0	25.647.0406.0	25.647.0416.0
50	18.90	14.00	5	25.646.0506.0	25.646.0516.0	25.647.0506.0	25.647.0516.0
50	22.40	17.50	6	25.646.0606.0	25.646.0616.0	25.647.0606.0	25.647.0616.0
50	25.90	21.00	7	25.646.0706.0	25.646.0716.0	25.647.0706.0	25.647.0716.0
50	29.40	24.50	8	25.646.0806.0	25.646.0816.0	25.647.0806.0	25.647.0816.0
50	32.90	28.00	9	25.646.0906.0	25.646.0916.0	25.647.0906.0	25.647.0916.0
50	36.40	31.50	10	25.646.1006.0	25.646.1016.0	25.647.1006.0	25.647.1016.0
50	39.90	35.00	11	25.646.1106.0	25.646.1116.0	25.647.1106.0	25.647.1116.0
50	43.40	38.50	12	25.646.1206.0	25.646.1216.0	25.647.1206.0	25.647.1216.0
50	46.90	42.00	13	25.646.1306.0	25.646.1316.0	25.647.1306.0	25.647.1316.0
50	50.40	45.50	14	25.646.1406.0	25.646.1416.0	25.647.1406.0	25.647.1416.0
50	53.90	49.00	15	25.646.1506.0	25.646.1516.0	25.647.1506.0	25.647.1516.0
50	57.40	52.50	16	25.646.1606.0	25.646.1616.0	25.647.1606.0	25.647.1616.0

Box Qty	G	T	Pole	Part Number	Part Number	Part Number	Part Number

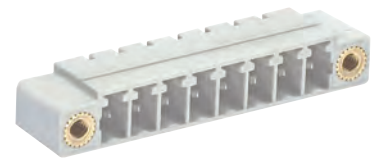
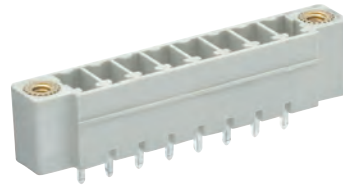
Custom Marking Available
More poles available on request

PCB headers series 8513 / 8813

pitch 3.50 / 3.81 mm

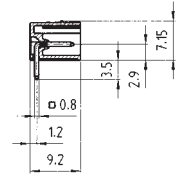
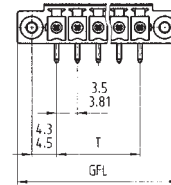
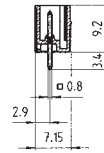
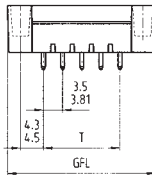
IEC	125 V 2.5kV cat.3	8 A
	250 V 2.5kV cat.2	
	690 V 2.5kV cat.1	
UL	300 V	8 A
CSA	300 V	5 A

Solder Pin 0.8 x 0.8 mm
Drill Hole 1.2 mm



See Technical Data section for screw material options

Approvals:



series 8513 S GF/WF pitch 3.50 mm

Box Qty	G	T	Pole
100	8.40	3.50	2
100	11.90	7.00	3
50	15.40	10.50	4
50	18.90	14.00	5
50	22.40	17.50	6
50	25.90	21.00	7
50	29.40	24.50	8
50	32.90	28.00	9
50	36.40	31.50	10
50	39.90	35.00	11
50	43.40	38.50	12
50	46.90	42.00	13
50	50.40	45.50	14
50	53.90	49.00	15
50	57.40	52.50	16

unmarked

Part Number	Part Number
25.646.3253.0	25.647.3253.0
25.646.3353.0	25.647.3353.0
25.646.3453.0	25.647.3453.0
25.646.3553.0	25.647.3553.0
25.646.3653.0	25.647.3653.0
25.646.3753.0	25.647.3753.0
25.646.3853.0	25.647.3853.0
25.646.3953.0	25.647.3953.0
25.646.4053.0	25.647.4053.0
25.646.4153.0	25.647.4153.0
25.646.4253.0	25.647.4253.0
25.646.4353.0	25.647.4353.0
25.646.4453.0	25.647.4453.0
25.646.4553.0	25.647.4553.0
25.646.4653.0	25.647.4653.0

unmarked

Part Number	Part Number
25.647.3253.0	25.647.3253.0
25.647.3353.0	25.647.3353.0
25.647.3453.0	25.647.3453.0
25.647.3553.0	25.647.3553.0
25.647.3653.0	25.647.3653.0
25.647.3753.0	25.647.3753.0
25.647.3853.0	25.647.3853.0
25.647.3953.0	25.647.3953.0
25.647.4053.0	25.647.4053.0
25.647.4153.0	25.647.4153.0
25.647.4253.0	25.647.4253.0
25.647.4353.0	25.647.4353.0
25.647.4453.0	25.647.4453.0
25.647.4553.0	25.647.4553.0
25.647.4653.0	25.647.4653.0

series 8813 S GF/WF pitch 3.81 mm

Box Qty	G	T	Pole
100	9.01	3.81	2
100	12.82	7.62	3
50	16.63	11.43	4
50	20.44	15.24	5
50	24.25	19.05	6
50	28.06	22.86	7
50	31.87	26.67	8
50	35.68	30.48	9
50	39.49	34.29	10
50	43.30	38.10	11
50	47.11	41.91	12
50	50.92	45.72	13
50	54.73	49.53	14
50	58.54	53.34	15
50	62.35	57.15	16

unmarked

Part Number	Part Number
25.626.3253.0	25.627.3253.0
25.626.3353.0	25.627.3353.0
25.626.3453.0	25.627.3453.0
25.626.3553.0	25.627.3553.0
25.626.3653.0	25.627.3653.0
25.626.3753.0	25.627.3753.0
25.626.3853.0	25.627.3853.0
25.626.3953.0	25.627.3953.0
25.626.4053.0	25.627.4053.0
25.626.4153.0	25.627.4153.0
25.626.4253.0	25.627.4253.0
25.626.4353.0	25.627.4353.0
25.626.4453.0	25.627.4453.0
25.626.4553.0	25.627.4553.0
25.626.4653.0	25.627.4653.0

unmarked

Part Number	Part Number
25.627.3253.0	25.627.3253.0
25.627.3353.0	25.627.3353.0
25.627.3453.0	25.627.3453.0
25.627.3553.0	25.627.3553.0
25.627.3653.0	25.627.3653.0
25.627.3753.0	25.627.3753.0
25.627.3853.0	25.627.3853.0
25.627.3953.0	25.627.3953.0
25.627.4053.0	25.627.4053.0
25.627.4153.0	25.627.4153.0
25.627.4253.0	25.627.4253.0
25.627.4353.0	25.627.4353.0
25.627.4453.0	25.627.4453.0
25.627.4553.0	25.627.4553.0
25.627.4653.0	25.627.4653.0

Custom Marking Available
More poles available on request

PCB headers series 8513

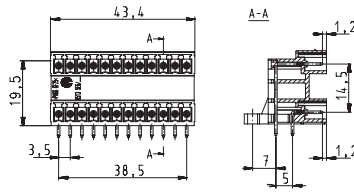
pitch 3.50 mm

IEC	125 V 2.5kV cat.3	8 A
	250 V 2.5kV cat.2	
UL	300 V	8 A
CSA	300 V	5 A
Solder Pin	0.8 x 0.8 mm	
Drill Hole	1.2 mm	



See Technical Data section for screw material options

Approvals:



series 8513 SEG pitch 3.50 mm				unmarked			
Box Qty	G	T	Pole	Part Number	Part Number	Part Number	Part Number
100	8.40	3.50	2	27.647.1253.1			
100	11.90	7.00	3	27.647.1353.1			
50	15.40	10.50	4	27.647.1453.1			
50	18.90	14.00	5	27.647.1553.1			
50	22.40	17.50	6	27.647.1653.1			
50	25.90	21.00	7	27.647.1753.1			
50	29.40	24.50	8	27.647.1853.1			
50	32.90	28.00	9	27.647.1953.1			
50	36.40	31.50	10	27.647.2053.1			
50	39.90	35.00	11	27.647.2153.1			
50	43.40	38.50	12	27.647.2253.1			
50	46.90	42.00	13	27.647.2353.1			
50	50.40	45.50	14	27.647.2453.1			
50	53.90	49.00	15	27.647.2553.1			
50	57.40	52.50	16	27.647.2653.1			

Box Qty	G	T	Pole	Part Number	Part Number	Part Number	Part Number

PCB headers series 8513, reflow process

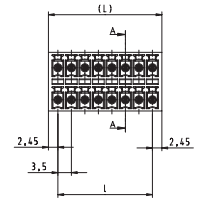
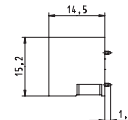
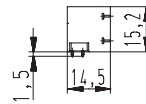
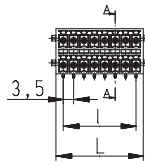
pitch 3.50 mm

IEC	160 V 2.5kV cat.3	8 A
UL	300 V	8 A
CSA	300 V	5 A
Solder Pin	0.8 x 0.8 mm	
Drill Hole	1.2 mm	



See Technical Data section for screw material options

Approvals:



series 8513 SEGN W/G THR OB pitch 3.50 mm

Box Qty	G	T	Pole
100	8.40	3.50	2
100	11.90	7.00	3
50	15.40	10.50	4
50	18.90	14.00	5
50	22.40	17.50	6
50	25.90	21.00	7
50	29.40	24.50	8
50	32.90	28.00	9
50	36.40	31.50	10
50	39.90	35.00	11
50	43.40	38.50	12
50	46.90	42.00	13
50	50.40	45.50	14
50	53.90	49.00	15
50	57.40	52.50	16

Without locking flange
Box

With locking flange
Box

Without locking flange
Box

With locking flange
Box

Part Number	Part Number	Part Number	Part Number
25.657.0208.0	25.657.6208.0	25.656.0208.0	25.656.6208.0
25.657.0308.0	25.657.6308.0	25.656.0308.0	25.656.6308.0
25.657.0408.0	25.657.6408.0	25.656.0408.0	25.656.6408.0
25.657.0508.0	25.657.6508.0	25.656.0508.0	25.656.6508.0
25.657.0608.0	25.657.6608.0	25.656.0608.0	25.656.6608.0
25.657.0708.0	25.657.6708.0	25.656.0708.0	25.656.6708.0
25.657.0808.0	25.657.6808.0	25.656.0808.0	25.656.6808.0
25.657.0908.0	25.657.6908.0	25.656.0908.0	25.656.6908.0
25.657.1008.0	25.657.7008.0	25.656.1008.0	25.656.7008.0
25.657.1108.0	25.657.7108.0	25.656.1108.0	25.656.7108.0
25.657.1208.0	25.657.7208.0	25.656.1208.0	25.656.7208.0
25.657.1308.0	25.657.7308.0	25.656.1308.0	25.656.7308.0
25.657.1408.0	25.657.7408.0	25.656.1408.0	25.656.7408.0
25.657.1508.0	25.657.7508.0	25.656.1508.0	25.656.7508.0
25.657.1608.0	25.657.7608.0	25.656.1608.0	25.656.7608.0

Box Qty	G	T	Pole	Part Number	Part Number	Part Number	Part Number

PCB headers series 8513, reflow process

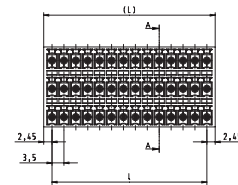
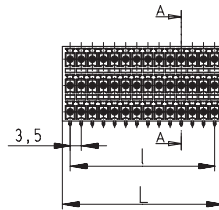
pitch 3.50 mm

IEC	160 V 2.5kV cat.3	8 A
UL	300 V	8 A
CSA	300 V	5 A
Solder Pin	0.8 x 0.8 mm	
Drill Hole	1.2 mm	



See Technical Data section for screw material options

Approvals:



series 8513 SDGN W/G THR OB pitch 3.50 mm

Box Qty	G	T	Pole
100	8.40	3.50	2
100	11.90	7.00	3
50	15.40	10.50	4
50	18.90	14.00	5
50	22.40	17.50	6
50	25.90	21.00	7
50	29.40	24.50	8
50	32.90	28.00	9
50	36.40	31.50	10
50	39.90	35.00	11
50	43.40	38.50	12
50	46.90	42.00	13
50	50.40	45.50	14
50	53.90	49.00	15
50	57.40	52.50	16

Without locking flange
Box

With locking flange
Box

Without locking flange
Box

With locking flange
Box

Part Number	Part Number	Part Number	Part Number
25.667.0208.0	25.667.6208.0	25.666.0208.0	25.666.6208.0
25.667.0308.0	25.667.6308.0	25.666.0308.0	25.666.6308.0
25.667.0408.0	25.667.6408.0	25.666.0408.0	25.666.6408.0
25.667.0508.0	25.667.6508.0	25.666.0508.0	25.666.6508.0
25.667.0608.0	25.667.6608.0	25.666.0608.0	25.666.6608.0
25.667.0708.0	25.667.6708.0	25.666.0708.0	25.666.6708.0
25.667.0808.0	25.667.6808.0	25.666.0808.0	25.666.6808.0
25.667.0908.0	25.667.6908.0	25.666.0908.0	25.666.6908.0
25.667.1008.0	25.667.7008.0	25.666.1008.0	25.666.7008.0
25.667.1108.0	25.667.7108.0	25.666.1108.0	25.666.7108.0
25.667.1208.0	25.667.7208.0	25.666.1208.0	25.666.7208.0
25.667.1308.0	25.667.7308.0	25.666.1308.0	25.666.7308.0
25.667.1408.0	25.667.7408.0	25.666.1408.0	25.666.7408.0
25.667.1508.0	25.667.7508.0	25.666.1508.0	25.666.7508.0
25.667.1608.0	25.667.7608.0	25.666.1608.0	25.666.7608.0

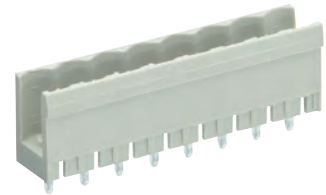
Box Qty	G	T	Pole	Part Number	Part Number	Part Number	Part Number

PCB headers series 8113 / 8213

pitch 5.00 / 5.08 mm

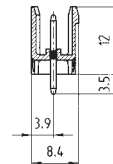
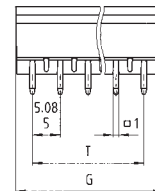
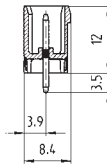
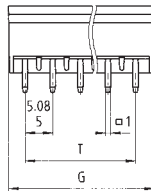
IEC	250 V 4kV cat.3	12 A
	400 V 4kV cat.2	
	1000 V 4kV cat.1	
UL	300 V	15 A
CSA	300 V	15 A

Solder Pin 1.0 x 1.0 mm
Drill Hole 1.4 mm



See Technical Data section for screw material options

Approvals:



series 8113 S G/GOF pitch 5.00 mm

Box Qty	G	T	Pole
100	10.16	5	2
100	15.24	10	3
50	20.32	15	4
50	25.40	20	5
50	30.48	25	6
50	35.56	30	7
50	40.64	35	8
50	45.72	40	9
50	50.80	45	10
50	55.88	50	11
50	60.96	55	12
50	66.04	60	13
50	71.12	65	14
50	76.20	70	15
50	81.28	75	16

unmarked closed version

Part Number	Part Number
25.330.3253.0	
25.330.3353.0	
25.330.3453.0	
25.330.3553.0	
25.330.3653.0	
25.330.3753.0	
25.330.3853.0	
25.330.3953.0	
25.330.4053.0	
25.330.4153.0	
25.330.4253.0	
25.330.4353.0	
25.330.4453.0	
25.330.4553.0	
25.330.4653.0	

unmarked open version

Part Number	Part Number
99.202.9996.0	
99.203.9996.0	
99.204.9996.0	
99.205.9996.0	
99.206.9996.0	
99.207.9996.0	
99.208.9996.0	
99.209.9996.0	
99.210.9996.0	
99.211.9996.0	
99.212.9996.0	
99.213.9996.0	
99.214.9996.0	
99.215.9996.0	
99.216.9996.0	

series 8213 S G/GOF pitch 5.08 mm

Box Qty	G	T	Pole
100	11.56	5.08	2
100	16.64	10.16	3
50	21.72	15.24	4
50	26.80	20.32	5
50	31.88	25.40	6
50	36.96	30.48	7
50	42.04	35.56	8
50	47.12	40.64	9
50	52.20	45.72	10
50	57.28	50.80	11
50	62.36	55.88	12
50	67.44	60.96	13
50	72.52	66.04	14
50	77.60	71.12	15
50	82.68	76.20	16

unmarked closed version

Part Number	Part Number
25.350.3253.0	
25.350.3353.0	
25.350.3453.0	
25.350.3553.0	
25.350.3653.0	
25.350.3753.0	
25.350.3853.0	
25.350.3953.0	
25.350.4053.0	
25.350.4153.0	
25.350.4253.0	
25.350.4353.0	
25.350.4453.0	
25.350.4553.0	
25.350.4653.0	

unmarked open version

Part Number	Part Number
99.232.9996.1	
99.233.9996.1	
99.234.9996.1	
99.235.9996.1	
99.236.9996.1	
99.237.9996.1	
99.238.9996.1	
99.239.9996.1	
99.240.9996.1	
99.241.9996.1	
99.242.9996.1	
99.243.9996.1	
99.244.9996.1	
99.245.9996.1	
99.246.9996.1	

Custom Marking Available
More poles available on request

PCB headers series 8113 / 8213

pitch 5.00 / 5.08 mm

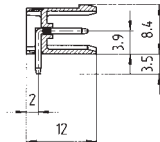
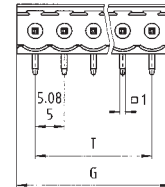
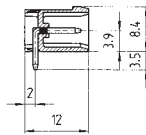
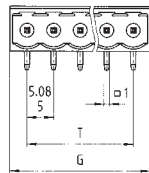
IEC	250 V 4kV cat.3	12 A
	400 V 4kV cat.2	
	1000 V 4kV cat.1	
UL	300 V	15 A
CSA	300 V	15 A

Solder Pin 1.0 x 1.0 mm
Drill Hole 1.4 mm



See Technical Data section for screw material options

Approvals:



series 8113 S W/WOF pitch 5.00 mm

Box Qty	G	T	Pole
100	11.40	5	2
100	16.40	10	3
50	21.40	15	4
50	26.40	20	5
50	31.40	25	6
50	36.40	30	7
50	41.40	35	8
50	46.40	40	9
50	51.40	45	10
50	56.40	50	11
50	61.40	55	12
50	66.40	60	13
50	71.40	65	14
50	76.40	70	15
50	81.40	75	16

unmarked closed version

Part Number	Part Number
25.332.3253.0	
25.332.3353.0	
25.332.3453.0	
25.332.3553.0	
25.332.3653.0	
25.332.3753.0	
25.332.3853.0	
25.332.3953.0	
25.332.4053.0	
25.332.4153.0	
25.332.4253.0	
25.332.4353.0	
25.332.4453.0	
25.332.4553.0	
25.332.4653.0	

unmarked open version

Part Number	Part Number
99.262.9996.0	
99.263.9996.0	
99.264.9996.0	
99.265.9996.0	
99.266.9996.0	
99.267.9996.0	
99.268.9996.0	
99.269.9996.0	
99.270.9996.0	
99.271.9996.0	
99.272.9996.0	
99.273.9996.0	
99.274.9996.0	
99.275.9996.0	
99.276.9996.0	

series 8213 S W/WOF pitch 5.08 mm

Box Qty	G	T	Pole
100	11.56	5.08	2
100	16.64	10.16	3
50	21.72	15.24	4
50	26.80	20.32	5
50	31.88	25.40	6
50	36.96	30.48	7
50	42.04	35.56	8
50	47.12	40.64	9
50	52.20	45.72	10
50	57.28	50.80	11
50	62.36	55.88	12
50	67.44	60.96	13
50	72.52	66.04	14
50	77.60	71.12	15
50	82.68	76.20	16

unmarked closed version

Part Number	Part Number
25.352.3253.0	
25.352.3353.0	
25.352.3453.0	
25.352.3553.0	
25.352.3653.0	
25.352.3753.0	
25.352.3853.0	
25.352.3953.0	
25.352.4053.0	
25.352.4153.0	
25.352.4253.0	
25.352.4353.0	
25.352.4453.0	
25.352.4553.0	
25.352.4653.0	

unmarked open version

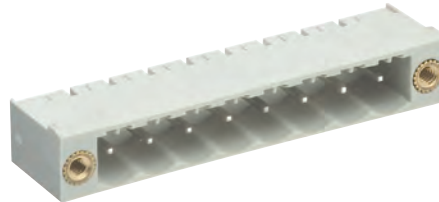
Part Number	Part Number
99.202.9996.2	
99.203.9996.2	
99.204.9996.2	
99.205.9996.2	
99.206.9996.2	
99.207.9996.2	
99.208.9996.2	
99.209.9996.2	
99.210.9996.2	
99.211.9996.2	
99.212.9996.2	
99.213.9996.2	
99.214.9996.2	
99.215.9996.2	
99.216.9996.2	

PCB header series 8113 / 8213

pitch 5.00 / 5.08 mm

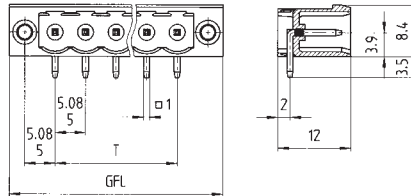
IEC	250 V 4kV cat.3	12 A
	400 V 4kV cat.2	
	1000 V 4kV cat.1	
UL	300 V	15 A
CSA	300 V	15 A

Solder Pin 1.0 x 1.0 mm
Drill Hole 1.4 mm



See Technical Data section for screw material options

Approvals:



series 8113 S WF pitch 5.00 mm

unmarked with screw flange

Box Qty	GFL	T	Pole	Part Number	Part Number	Part Number	Part Number
100	20	5	2	25.339.3253.0			
100	25	10	3	25.339.3353.0			
50	30	15	4	25.339.3453.0			
50	35	20	5	25.339.3553.0			
50	40	25	6	25.339.3653.0			
50	45	30	7	25.339.3753.0			
50	50	35	8	25.339.3853.0			
50	55	40	9	25.339.3953.0			
50	60	45	10	25.339.4053.0			
50	65	50	11	25.339.4153.0			
50	70	55	12	25.339.4253.0			
50	75	60	13	25.339.4353.0			
50	80	65	14	25.339.4453.0			
50	85	70	15	25.339.4553.0			
50	90	75	16	25.339.4653.0			

series 8213 S WF pitch 5.08 mm

unmarked

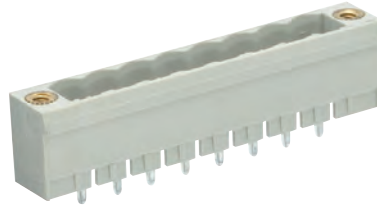
Box Qty	GFL	T	Pole	Part Number	Part Number	Part Number	Part Number
100	20.32	5.08	2	25.358.3253.0			
100	25.40	10.16	3	25.358.3353.0			
50	30.48	15.24	4	25.358.3453.0			
50	35.56	20.32	5	25.358.3553.0			
50	40.64	25.40	6	25.358.3653.0			
50	45.72	30.48	7	25.358.3753.0			
50	50.80	35.56	8	25.358.3853.0			
50	55.88	40.64	9	25.358.3953.0			
50	60.96	45.72	10	25.358.4053.0			
50	66.04	50.80	11	25.358.4153.0			
50	71.12	55.88	12	25.358.4253.0			
50	76.20	60.96	13	25.358.4353.0			
50	81.28	66.04	14	25.358.4453.0			
50	86.36	71.12	15	25.358.4553.0			
50	91.44	76.20	16	25.358.4653.0			

PCB headers series 8113 / 8213

pitch 5.00 / 5.08 mm

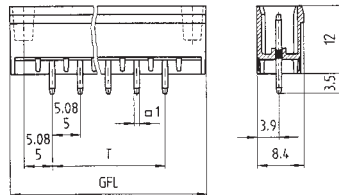
IEC	250 V 4kV cat.3	12 A
	400 V 4kV cat.2	
	1000 V 4kV cat.1	
UL	300 V	15 A
CSA	300 V	15 A

Solder Pin 1.0 x 1.0 mm
Drill Hole 1.4 mm



See Technical Data section for screw material options

Approvals:



series 8113 S GF pitch 5.00 mm

Box Qty	GFL	T	Pole
100	20	5	2
100	25	10	3
50	30	15	4
50	35	20	5
50	40	25	6
50	45	30	7
50	50	35	8
50	55	40	9
50	60	45	10
50	65	50	11
50	70	55	12
50	75	60	13
50	80	65	14
50	85	70	15
50	90	75	16

unmarked
with screw flange

Part Number	Part Number	Part Number	Part Number
25.338.3253.0			
25.338.3353.0			
25.338.3453.0			
25.338.3553.0			
25.338.3653.0			
25.338.3753.0			
25.338.3853.0			
25.338.3953.0			
25.338.4053.0			
25.338.4153.0			
25.338.4253.0			
25.338.4353.0			
25.338.4453.0			
25.338.4553.0			
25.338.4653.0			

series 8213 S GF pitch 5.08 mm

Box Qty	GFL	T	Pole
100	20.32	5.08	2
100	25.40	10.16	3
50	30.48	15.24	4
50	35.56	20.32	5
50	40.64	25.40	6
50	45.72	30.48	7
50	50.80	35.56	8
50	55.88	40.64	9
50	60.96	45.72	10
50	66.04	50.80	11
50	71.12	55.88	12
50	76.20	60.96	13
50	81.28	66.04	14
50	86.36	71.12	15
50	91.44	76.20	16

unmarked

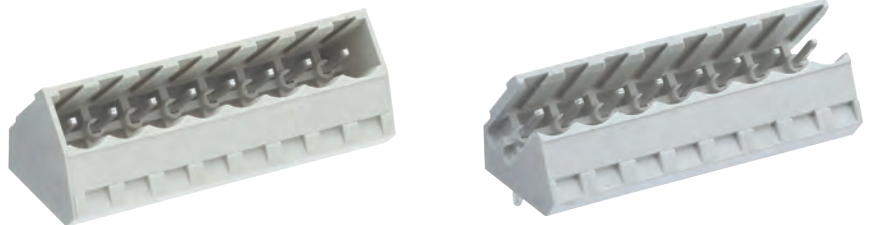
Part Number	Part Number	Part Number	Part Number
25.359.3253.0			
25.359.3353.0			
25.359.3453.0			
25.359.3553.0			
25.359.3653.0			
25.359.3753.0			
25.359.3853.0			
25.359.3953.0			
25.359.4053.0			
25.359.4153.0			
25.359.4253.0			
25.359.4353.0			
25.359.4453.0			
25.359.4553.0			
25.359.4653.0			

PCB headers series 8113 / 8213

pitch 5.00 / 5.08 mm

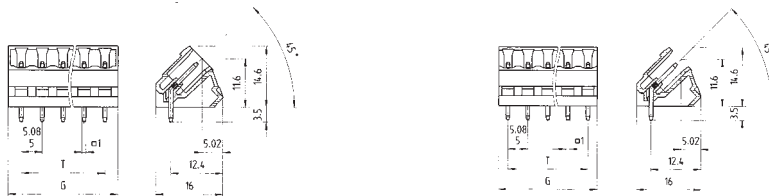
IEC	250 V 4kV cat.3	12 A
	400 V 4kV cat.2	
	1000 V 4kV cat.1	
UL	300 V	15 A
CSA	300 V	15 A

Solder Pin 1.0 x 1.0 mm
Drill Hole 1.4 mm



See Technical Data section for screw material options

Approvals:



series 8113 S S/S1 pitch 5.00 mm

Box Qty	G	T	Pole
100	11.20	5	2
100	16.20	10	3
50	21.20	15	4
50	26.20	20	5
50	31.20	25	6
50	36.20	30	7
50	41.20	35	8
50	46.20	40	9
50	51.20	45	10
50	56.20	50	11
50	61.20	55	12
50	66.20	60	13
50	71.20	65	14
50	76.20	70	15
50	81.20	75	16

unmarked
closed version

Part Number	Part Number
25.394.3253.0	
25.394.3353.0	
25.394.3453.0	
25.394.3553.0	
25.394.3653.0	
25.394.3753.0	
25.394.3853.0	
25.394.3953.0	
25.394.4053.0	
25.394.4153.0	
25.394.4253.0	
25.394.4353.0	
25.394.4453.0	
25.394.4553.0	
25.394.4653.0	

unmarked
open version

Part Number	Part Number
25.395.3253.0	
25.395.3353.0	
25.395.3453.0	
25.395.3553.0	
25.395.3653.0	
25.395.3753.0	
25.395.3853.0	
25.395.3953.0	
25.395.4053.0	
25.395.4153.0	
25.395.4253.0	
25.395.4353.0	
25.395.4453.0	
25.395.4553.0	
25.395.4653.0	

marked
open version

series 8213 S S/S1 pitch 5.08 mm

Box Qty	G	T	Pole
100	11.36	5.08	2
100	16.44	10.16	3
50	21.52	15.24	4
50	26.60	20.32	5
50	31.68	25.40	6
50	36.76	30.48	7
50	41.84	35.56	8
50	46.92	40.64	9
50	52.00	45.72	10
50	57.08	50.80	11
50	62.19	55.88	12
50	67.24	60.96	13
50	72.32	66.04	14
50	77.40	71.12	15
50	82.48	76.20	16

unmarked

Part Number	Part Number
25.396.3253.0	
25.396.3353.0	
25.396.3453.0	
25.396.3553.0	
25.396.3653.0	
25.396.3753.0	
25.396.3853.0	
25.396.3953.0	
25.396.4053.0	
25.396.4153.0	
25.396.4253.0	
25.396.4353.0	
25.396.4453.0	
25.396.4553.0	
25.396.4653.0	

unmarked
open version

Part Number	Part Number
25.397.3253.0	
25.397.3353.0	
25.397.3453.0	
25.397.3553.0	
25.397.3653.0	
25.397.3753.0	
25.397.3853.0	
25.397.3953.0	
25.397.4053.0	
25.397.4153.0	
25.397.4253.0	
25.397.4353.0	
25.397.4453.0	
25.397.4553.0	
25.397.4653.0	

marked
with insulating plate
with locating cams

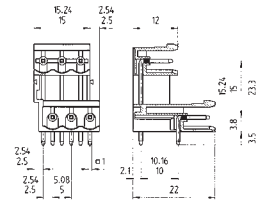
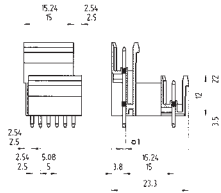
PCB headers series 8113 / 8213

pitch 5.00 / 5.08 mm

IEC	250 V 4kV cat.3	10 A
	400 V 4kV cat.2	
	1000 V 4kV cat.1	
UL	300 V	15 A
CSA	300 V	15 A
Solder Pin	1.0 x 1.0 mm	
Drill Hole	1.4 mm	



See Technical Data section for screw material options



Approvals:



series 8113 SE G/W pitch 5.00 mm				unmarked		unmarked	
Box Qty	G	T	Pole	Part Number	Part Number	Part Number	Part Number
100		5	2 x 2	25.334.3253.0		25.336.3253.0	
100		10	2 x 3	25.334.3353.0		25.336.3353.0	

series 8213 SE G/W pitch 5.08 mm				unmarked		unmarked	
Box Qty	G	T	Pole	Part Number	Part Number	Part Number	Part Number
100		5.08	2 x 2	25.354.3253.0		25.356.3253.0	
100		10.16	2 x 3	25.354.3353.0		25.356.3353.0	

PCB headers series 81-8213

pitch 5.00 / 5.08 mm

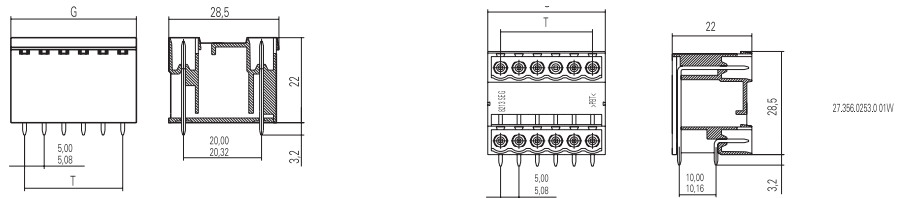
IEC	250 V 4kV/3 cat.3	10 A
	400 V 4kV/2 cat.3	
	400 V 4kV/2 cat.2	
UL	300 V	10 A
CSA	300 V	10 A

Solder Pin 1.0 x 1.0 mm
Drill Hole 1.4 mm



2000 piece minimum order quantity
See Technical Data section for screw material options

Approvals:



series 81-8213 SEG G/W pitch 5.00 mm

Box Qty	G	T	Pole
100	12	5	4
100	17	10	6
50	22	15	8
50	27	20	10
50	32	25	12
50	37	30	14
50	42	35	16
50	47	40	18
50	52	45	20
50	57	50	22
50	62	55	24
50	67	60	26
50	72	65	28
50	77	70	30
50	82	75	32

unmarked

Part Number	Part Number
27.334.0253.0	
27.334.0353.0	
27.334.0453.0	
27.334.0553.0	
27.334.0653.0	
27.334.0753.0	
27.334.0853.0	
27.334.0953.0	
27.334.1053.0	
27.334.1153.0	
27.334.1253.0	
27.334.1353.0	
27.334.1453.0	
27.334.1553.0	
27.334.1653.0	

unmarked

Part Number	Part Number
27.336.0253.0	
27.336.0353.0	
27.336.0453.0	
27.336.0553.0	
27.336.0653.0	
27.336.0753.0	
27.336.0853.0	
27.336.0953.0	
27.336.1053.0	
27.336.1153.0	
27.336.1253.0	
27.336.1353.0	
27.336.1453.0	
27.336.1553.0	
27.336.1653.0	

series 81-8213 SE G/W pitch 5.08 mm

Box Qty	G	T	Pole
100	12.16	5.08	4
100	17.24	10.16	6
50	22.32	15.24	8
50	27.40	20.32	10
50	32.48	25.40	12
50	37.56	30.48	14
50	42.64	35.56	16
50	47.72	40.64	18
50	52.80	45.72	20
50	57.88	50.80	22
50	62.96	55.88	24
50	68.04	60.96	26
50	73.12	66.04	28
50	78.20	71.12	30
50	83.28	76.20	32

unmarked

Part Number	Part Number
27.354.0253.0	
27.354.0353.0	
27.354.0453.0	
27.354.0553.0	
27.354.0653.0	
27.354.0753.0	
27.354.0853.0	
27.354.0953.0	
27.354.1053.0	
27.354.1153.0	
27.354.1253.0	
27.354.1353.0	
27.354.1453.0	
27.354.1553.0	
27.354.1653.0	

unmarked

Part Number	Part Number
27.356.0253.0	
27.356.0353.0	
27.356.0453.0	
27.356.0553.0	
27.356.0653.0	
27.356.0753.0	
27.356.0853.0	
27.356.0953.0	
27.356.1053.0	
27.356.1153.0	
27.356.1253.0	
27.356.1353.0	
27.356.1453.0	
27.356.1553.0	
27.356.1653.0	

PCB headers series 8313 / 8413

pitch 7.50 / 7.62 mm

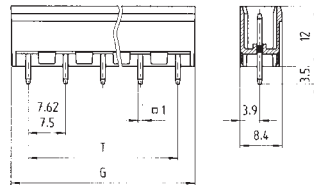
IEC	250 V 4kV cat.3	12 A
	400 V 4kV cat.2	
	1000 V 4kV cat.1	
UL	300 V	15 A
CSA	300 V	15 A

Solder Pin 1.0 x 1.0 mm
Drill Hole 1.4 mm



See Technical Data section for screw material options

Approvals:



series 8313 S G pitch 7.50 mm				unmarked			
Box Qty	G	T	Pole	Part Number	Part Number	Part Number	Part Number
100	14.20	7.50	2	25.370.3253.0			
100	21.70	15.00	3	25.370.3353.0			
50	29.20	22.50	4	25.370.3453.0			
50	36.70	30.00	5	25.370.3553.0			
50	44.20	37.50	6	25.370.3653.0			
50	51.70	45.00	7	25.370.3753.0			
50	59.20	52.50	8	25.370.3853.0			
50	66.70	60.00	9	25.370.3953.0			
50	74.20	67.50	10	25.370.4053.0			
50	81.70	75.00	11	25.370.4153.0			
50	89.20	82.50	12	25.370.4253.0			

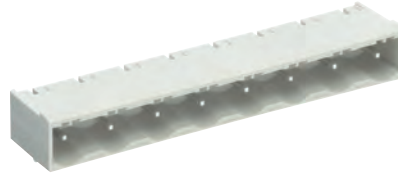
series 8413 S G pitch 7.62 mm				unmarked			
Box Qty	G	T	Pole	Part Number	Part Number	Part Number	Part Number
100	14.32	7.62	2	25.390.3253.0			
100	21.94	15.24	3	25.390.3353.0			
50	29.56	22.86	4	25.390.3453.0			
50	37.18	30.48	5	25.390.3553.0			
50	44.80	38.10	6	25.390.3653.0			
50	52.42	45.72	7	25.390.3753.0			
50	60.04	53.34	8	25.390.3853.0			
50	67.66	60.64	9	25.390.3953.0			
50	75.28	68.58	10	25.390.4053.0			
50	82.90	76.20	11	25.390.4153.0			
50	90.52	83.82	12	25.390.4253.0			

PCB headers series 8313 / 8413

pitch 7.50 / 7.62 mm

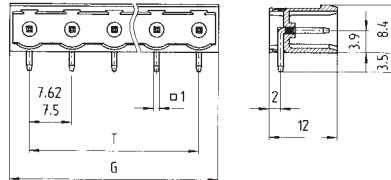
IEC	400 V 4kV cat.3	12 A
	690 V 4kV cat.2	
	1000 V 4kV cat.1	
UL	300 V	15 A
CSA	300 V	15 A

Solder Pin 1.0 x 1.0 mm
Drill Hole 1.4 mm



See Technical Data section for screw material options

Approvals:



series 8313 S W pitch 7.50 mm

Box Qty	G	T	Pole
100	14.40	7.50	2
100	21.90	15.00	3
50	29.40	22.50	4
50	36.90	30.00	5
50	44.40	37.50	6
50	51.90	45.00	7
50	59.40	52.50	8
50	66.90	60.00	9
50	74.40	67.50	10
50	81.90	75.00	11
50	89.40	82.50	12

unmarked

Part Number	Part Number	Part Number	Part Number
25.372.3253.0			
25.372.3353.0			
25.372.3453.0			
25.372.3553.0			
25.372.3653.0			
25.372.3753.0			
25.372.3853.0			
25.372.3953.0			
25.372.4053.0			
25.372.4153.0			
25.372.4253.0			

series 8413 S W pitch 7.62 mm

Box Qty	G	T	Pole
100	14.52	7.62	2
100	22.14	15.24	3
50	29.76	22.86	4
50	37.38	30.48	5
50	45.00	38.10	6
50	52.62	45.72	7
50	60.24	53.34	8
50	67.86	60.64	9
50	75.48	68.58	10
50	83.10	76.20	11
50	90.72	83.82	12

unmarked

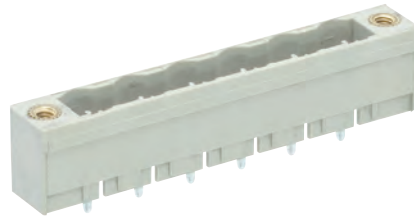
Part Number	Part Number	Part Number	Part Number
25.392.3253.0			
25.392.3353.0			
25.392.3453.0			
25.392.3553.0			
25.392.3653.0			
25.392.3753.0			
25.392.3853.0			
25.392.3953.0			
25.392.4053.0			
25.392.4153.0			
25.392.4253.0			

PCB headers series 8313 / 8413

pitch 7.50 / 7.62 mm

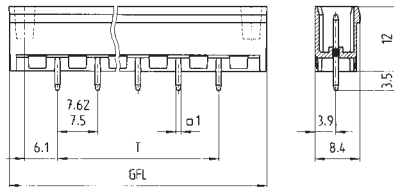
IEC	250 V 4kV cat.3	12 A
	400 V 4kV cat.2	
	1000 V 4kV cat.1	
UL	300 V	15 A
CSA	300 V	15 A

Solder Pin 1.0 x 1.0 mm
Drill Hole 1.4 mm



See Technical Data section for screw material options

Approvals:



series 8313 S GF pitch 7.50 mm

unmarked
with screw flange

Box Qty	GFL	T	Pole	Part Number	Part Number	Part Number	Part Number
100	25.54	7.50	2	25.374.6253.0			
100	33.04	15.00	3	25.374.6353.0			
50	40.54	22.50	4	25.374.6453.0			
50	48.04	30.00	5	25.374.6553.0			
50	55.54	37.50	6	25.374.6653.0			
50	63.04	45.00	7	25.374.6753.0			
50	70.54	52.50	8	25.374.6853.0			
50	78.04	60.00	9	25.374.6953.0			
50	85.54	67.50	10	25.374.7053.0			
50	93.04	75.00	11	25.374.7153.0			
50	100.54	82.50	12	25.374.7253.0			

series 8413 S GF pitch 7.62 mm

unmarked
with screw flange

Box Qty	GFL	T	Pole	Part Number	Part Number	Part Number	Part Number
100	25.66	7.62	2	25.398.6253.0			
100	33.25	15.24	3	25.398.6353.0			
50	40.90	22.86	4	25.398.6453.0			
50	48.52	30.48	5	25.398.6553.0			
50	56.14	38.10	6	25.398.6653.0			
50	63.76	45.72	7	25.398.6753.0			
50	71.38	53.34	8	25.398.6853.0			
50	79.00	60.64	9	25.398.6953.0			
50	86.62	68.58	10	25.398.7053.0			
50	94.24	76.20	11	25.398.7153.0			
50	101.86	83.82	12	25.398.7253.0			

PCB headers series 8313 / 8413

pitch 7.50 / 7.62 mm

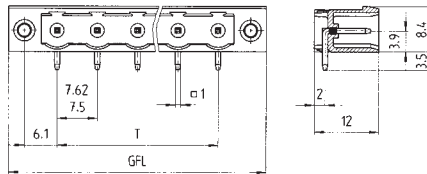
IEC	400 V 4kV cat.3	12 A
	690 V 4kV cat.2	
	1000 V 4kV cat.1	
UL	300 V	15 A
CSA	300 V	15 A

Solder Pin 1.0 x 1.0 mm
Drill Hole 1.4 mm



See Technical Data section for screw material options

Approvals:



series 8313 S WF pitch 7.50 mm

unmarked
with screw flange

Box Qty	GFL	T	Pole	Part Number	Part Number	Part Number	Part Number
100	25.54	7.50	2	25.374.2253.0			
100	33.04	15.00	3	25.374.2353.0			
50	40.54	22.50	4	25.374.2453.0			
50	48.04	30.00	5	25.374.2553.0			
50	55.54	37.50	6	25.374.2653.0			
50	63.04	45.00	7	25.374.2753.0			
50	70.54	52.50	8	25.374.2853.0			
50	78.04	60.00	9	25.374.2953.0			
50	85.54	67.50	10	25.374.3053.0			
50	93.04	75.00	11	25.374.3153.0			
50	100.54	82.50	12	25.374.3253.0			

series 8413 S WF pitch 7.62 mm

unmarked
with screw flange

Box Qty	GFL	T	Pole	Part Number	Part Number	Part Number	Part Number
100	25.66	7.62	2	25.398.2253.0			
100	33.25	15.24	3	25.398.2353.0			
50	40.90	22.86	4	25.398.2453.0			
50	48.52	30.48	5	25.398.2553.0			
50	56.14	38.10	6	25.398.2653.0			
50	63.76	45.72	7	25.398.2753.0			
50	71.38	53.34	8	25.398.2853.0			
50	79.00	60.64	9	25.398.2953.0			
50	86.62	68.58	10	25.398.3053.0			
50	94.24	76.20	11	25.398.3153.0			
50	101.86	83.82	12	25.398.3253.0			

Pluggable PCB terminals series 8513 / 8813, rising cage clamp system

pitch 3.50 / 3.81 mm

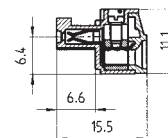
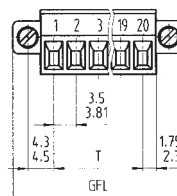
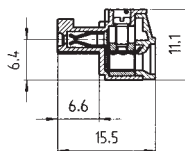
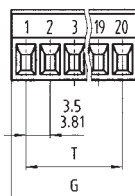
IEC	125 V 2.5kV cat.3 250 V 2.5kV cat.2 690 V 2.5kV cat.1	8 A	0.14 - 1.5 mm ² (Stranded) 0.14 - 1.5 mm ² (Solid)
UL	300 V	8 A	30 - 16 AWG
CSA	300 V	5 A	22 - 14 AWG



Wire Strip Length 6.5 mm
Screw Size M2

See Technical Data section for screw material options

Approvals:



series 8513 B pitch 3.50 mm

Box Qty	G	T	Pole
100	7.00	3.50	2
100	10.50	7.00	3
50	14.00	10.50	4
50	17.50	14.00	5
50	21.00	17.50	6
50	24.50	21.00	7
50	28.00	24.50	8
50	31.50	28.00	9
50	35.00	31.50	10
50	38.50	35.00	11
50	42.00	38.50	12
50	45.50	42.00	13
50	49.00	45.50	14
50	52.50	49.00	15
50	56.00	52.50	16

unmarked	marked	unmarked with screw flange	unmarked with screw flange
Part Number	Part Number	Part Number	Part Number
25.640.3253.0	25.640.0253.0	25.641.3253.0	25.641.0253.0
25.640.3353.0	25.640.0353.0	25.641.3353.0	25.641.0353.0
25.640.3453.0	25.640.0453.0	25.641.3453.0	25.641.0453.0
25.640.3553.0	25.640.0553.0	25.641.3553.0	25.641.0553.0
25.640.3653.0	25.640.0653.0	25.641.3653.0	25.641.0653.0
25.640.3753.0	25.640.0753.0	25.641.3753.0	25.641.0753.0
25.640.3853.0	25.640.0853.0	25.641.3853.0	25.641.0853.0
25.640.3953.0	25.640.0953.0	25.641.3953.0	25.641.0953.0
25.640.4053.0	25.640.1053.0	25.641.4053.0	25.641.1053.0
25.640.4153.0	25.640.1153.0	25.641.4153.0	25.641.1153.0
25.640.4253.0	25.640.1253.0	25.641.4253.0	25.641.1253.0
25.640.4353.0	25.640.1353.0	25.641.4353.0	25.641.1353.0
25.640.4453.0	25.640.1453.0	25.641.4453.0	25.641.1453.0
25.640.4553.0	25.640.1553.0	25.641.4553.0	25.641.1553.0
25.640.4653.0	25.640.1653.0	25.641.4653.0	25.641.1653.0

series 8813 B pitch 3.81 mm

Box Qty	G	T	Pole
100	8.41	3.81	2
100	12.22	7.62	3
50	16.03	11.43	4
50	19.84	15.24	5
50	23.65	19.05	6
50	27.46	22.86	7
50	31.27	26.67	8
50	35.08	30.48	9
50	38.89	34.29	10
50	42.70	38.10	11
50	46.51	41.91	12
50	50.32	45.72	13
50	54.13	49.53	14
50	57.94	53.34	15
50	61.75	57.15	16

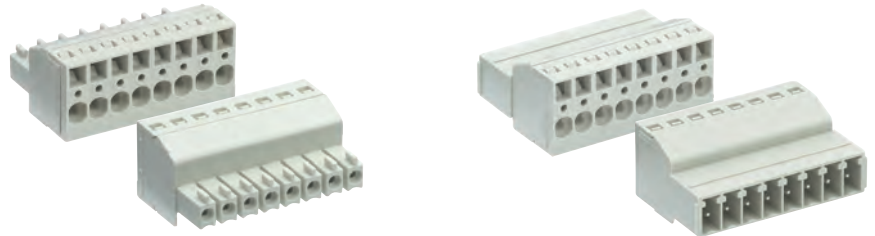
unmarked	marked	unmarked with screw flange	unmarked with screw flange
Part Number	Part Number	Part Number	Part Number
25.620.3253.0	25.620.0253.0	25.621.3253.0	25.621.0253.0
25.620.3353.0	25.620.0353.0	25.621.3353.0	25.621.0353.0
25.620.3453.0	25.620.0453.0	25.621.3453.0	25.621.0453.0
25.620.3553.0	25.620.0553.0	25.621.3553.0	25.621.0553.0
25.620.3653.0	25.620.0653.0	25.621.3653.0	25.621.0653.0
25.620.3753.0	25.620.0753.0	25.621.3753.0	25.621.0753.0
25.620.3853.0	25.620.0853.0	25.621.3853.0	25.621.0853.0
25.620.3953.0	25.620.0953.0	25.621.3953.0	25.621.0953.0
25.620.4053.0	25.620.1053.0	25.621.4053.0	25.621.1053.0
25.620.4153.0	25.620.1153.0	25.621.4153.0	25.621.1153.0
25.620.4253.0	25.620.1253.0	25.621.4253.0	25.621.1253.0
25.620.4353.0	25.620.1353.0	25.621.4353.0	25.621.1353.0
25.620.4453.0	25.620.1453.0	25.621.4453.0	25.621.1453.0
25.620.4553.0	25.620.1553.0	25.621.4553.0	25.621.1553.0
25.620.4653.0	25.620.1653.0	25.621.4653.0	25.621.1653.0

Custom Marking Available
More poles available on request

Pluggable PCB terminals series 8513, spring clamp system inverted plug

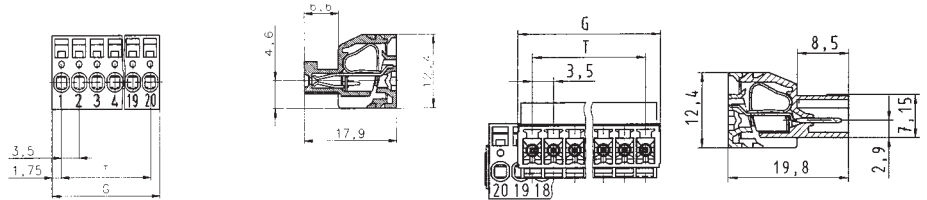
pitch 3.50 mm

IEC	125 V 2.5kV cat.3 250 V 2.5kV cat.2 690 V 2.5kV cat.1	8 A	0.14 – 1.5 mm ² (Stranded) 0.14 – 1.5 mm ² (Solid)
UL	300 V	8 A	30 - 16 AWG
CSA	300 V	8 A	22 - 14 AWG
Wire Strip Length	8 mm		



See Technical Data section for screw material options

Approvals:



series 8513 BFK pitch 3.50 mm

Box Qty	G	T	Pole
100	10.85	3.50	2
100	15.85	7.00	3
50	20.85	10.50	4
50	25.85	14.00	5
50	30.85	17.50	6
50	35.85	21.00	7
50	40.85	24.50	8
50	45.85	28.00	9
50	50.85	31.50	10
50	55.85	35.00	11
50	60.85	38.50	12
50	65.85	42.00	13
50	70.85	45.50	14
50	75.85	49.00	15
50	80.85	52.50	16

unmarked

marked

Part Number	Part Number	Part Number	Part Number
25.630.3253.0	25.630.0253.0		
25.630.3353.0	25.630.0353.0		
25.630.3453.0	25.630.0453.0		
25.630.3553.0	25.630.0553.0		
25.630.3653.0	25.630.0653.0		
25.630.3753.0	25.630.0753.0		
25.630.3853.0	25.630.0853.0		
25.630.3953.0	25.630.0953.0		
25.630.4053.0	25.630.1053.0		
25.630.4153.0	25.630.1153.0		
25.630.4253.0	25.630.1253.0		
25.630.4353.0	25.630.1353.0		
25.630.4453.0	25.630.1453.0		
25.630.4553.0	25.630.1553.0		
25.630.4653.0	25.630.1653.0		

series 8513 SUFK pitch 3.50 mm

Box Qty	G	T	Pole
100	8.40	3.50	2
100	11.90	7.00	3
50	15.40	10.50	4
50	18.90	14.00	5
50	22.40	17.50	6
50	25.90	21.00	7
50	29.40	24.50	8
50	32.90	28.00	9
50	36.40	31.50	10
50	39.90	35.00	11
50	43.40	38.50	12
50	46.90	42.00	13
50	50.40	45.50	14
50	53.90	49.00	15
50	57.40	52.50	16

unmarked

marked

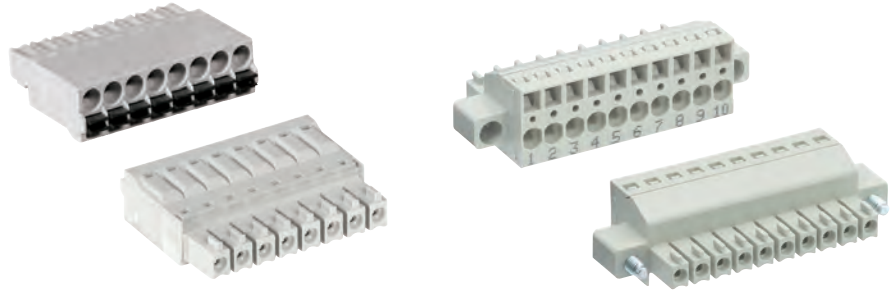
Part Number	Part Number	Part Number	Part Number
		25.642.3253.0	25.642.0253.0
		25.642.3353.0	25.642.0353.0
		25.642.3453.0	25.642.0453.0
		25.642.3553.0	25.642.0553.0
		25.642.3653.0	25.642.0653.0
		25.642.3753.0	25.642.0753.0
		25.642.3853.0	25.642.0853.0
		25.642.3953.0	25.642.0953.0
		25.642.4053.0	25.642.1053.0
		25.642.4153.0	25.642.1153.0
		25.642.4253.0	25.642.1253.0
		25.642.4353.0	25.642.1353.0
		25.642.4453.0	25.642.1453.0
		25.642.4553.0	25.642.1553.0
		25.642.4653.0	25.642.1653.0

Custom Marking Available
More poles available on request

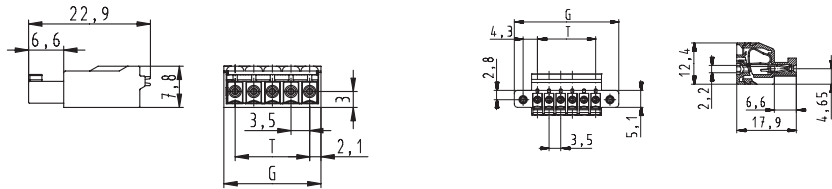
Pluggable PCB terminals series 8513, spring cage connection

pitch 3.50 mm

IEC	125 V 2.5kV cat.3	8 A
	250 V 2.5kV cat.2	
UL	300 V	8 A
CSA	300 V	5 A
Wire Strip Length	8 mm	



See Technical Data section for screw material options



Approvals:



series 8513 BS / BFK OB
pitch 3.50 mm

Box Qty	G	T	Pole
100	8.40	3.50	2
100	11.90	7.00	3
50	15.40	10.50	4
50	18.90	14.00	5
50	22.40	17.50	6
50	25.90	21.00	7
50	29.40	24.50	8
50	32.90	28.00	9
50	36.40	31.50	10
50	39.90	35.00	11
50	43.40	38.50	12
50	46.90	42.00	13
50	50.40	45.50	14
50	53.90	49.00	15
50	57.40	52.50	16

unmarked

Part Number	Part Number
27.630.3253.0	
27.630.3353.0	
27.630.3453.0	
27.630.3553.0	
27.630.3653.0	
27.630.3753.0	
27.630.3853.0	
27.630.3953.0	
27.630.3953.0	
27.630.4153.0	
27.630.4253.0	
27.630.4353.0	
27.630.4453.0	
27.630.4553.0	
27.630.4653.0	

unmarked
with screw flange

Part Number	Part Number
25.631.3253.0	
25.631.3353.0	
25.631.3453.0	
25.631.3553.0	
25.631.3653.0	
25.631.3753.0	
25.631.3853.0	
25.631.3953.0	
25.631.4053.0	
25.631.4153.0	
25.631.4253.0	
25.631.4353.0	
25.631.4453.0	
25.631.4553.0	
25.631.4653.0	

Box Qty	G	T	Pole	Part Number	Part Number	Part Number	Part Number

Custom Marking Available
More poles available on request

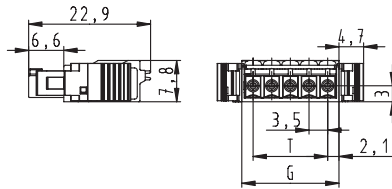
Pluggable PCB terminals series 8513, spring cage connection

pitch 3.50 mm

IEC	125 V 2.5kV cat.3 250 V 2.5kV cat.2	8 A
UL	300 V	8 A
CSA	300 V	5 A
Wire Strip Length	10 mm	



See Technical Data section for screw material options



Approvals:



series 8513 BS F2 OB
pitch 3.50 mm

With snap-in flange

Box Qty	G	T	Pole	Part Number	Part Number	Part Number	Part Number
100	8.40	3.50	2	27.631.3253.0			
100	11.90	7.00	3	27.631.3353.0			
50	15.40	10.50	4	27.631.3453.0			
50	18.90	14.00	5	27.631.3553.0			
50	22.40	17.50	6	27.631.3653.0			
50	25.90	21.00	7	27.631.3753.0			
50	29.40	24.50	8	27.631.3853.0			
50	32.90	28.00	9	27.631.3953.0			
50	36.40	31.50	10	27.631.3953.0			
50	39.90	35.00	11	27.631.4153.0			
50	43.40	38.50	12	27.631.4253.0			
50	46.90	42.00	13	27.631.4353.0			
50	50.40	45.50	14	27.631.4453.0			
50	53.90	49.00	15	27.631.4553.0			
50	57.40	52.50	16	27.631.4653.0			

Box Qty	G	T	Pole	Part Number	Part Number	Part Number	Part Number

Pluggable PCB terminals series 8513, rising cage clamp system inverted plug

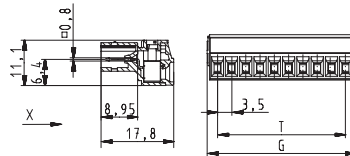
pitch 3.50 mm

IEC	125 V 2.5kV cat.3	8 A	0.14 - 1.5 mm ² (Stranded)
	250 V 2.5kV cat.2		0.14 - 1.5 mm ² (Solid)
UL	300 V	8 A	22 -16 AWG
CSA	300 V	5 A	22 -16 AWG



Wire Strip Length	6.5 mm
Screw Size	M2.5

See Technical Data section for screw material options



Approvals:



series 8513 SU OB
pitch 3.50 mm

unmarked

Box Qty	G	T	Pole	Part Number	Part Number	Part Number	Part Number
100	8.40	3.50	2	25.648.3253.0			
100	11.90	7.00	3	25.648.3353.0			
50	15.40	10.50	4	25.648.3453.0			
50	18.90	14.00	5	25.648.3553.0			
50	22.40	17.50	6	25.648.3653.0			
50	25.90	21.00	7	25.648.3753.0			
50	29.40	24.50	8	25.648.3853.0			
50	32.90	28.00	9	25.648.3953.0			
50	36.40	31.50	10	25.648.4053.0			
50	39.90	35.00	11	25.648.4153.0			
50	43.40	38.50	12	25.648.4253.0			
50	46.90	42.00	13	25.648.4353.0			
50	50.40	45.50	14	25.648.4453.0			
50	53.90	49.00	15	25.648.4553.0			
50	57.40	52.50	16	25.648.4653.0			

Box Qty	G	T	Pole	Part Number	Part Number	Part Number	Part Number

Custom Marking Available
More poles available on request

Pluggable PCB terminals series 8113 / 8213, rising cage clamp

pitch 5.00 / 5.08 mm

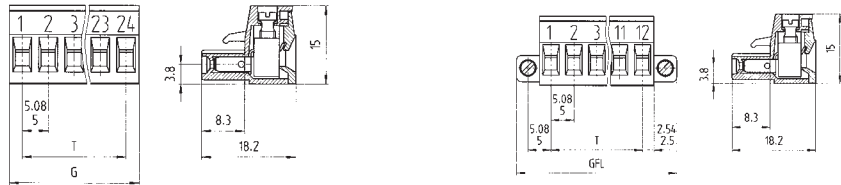
IEC	250 V 4kV cat.3 400 V 4kV cat.2 1000 V 4kV cat.1	12 A	0.14 - 2.5 mm ² (Stranded) 0.14 - 2.5 mm ² (Solid)
UL	300 V	15 A	22 - 12 AWG
CSA	300 V	15 A	22 - 12 AWG

Wire Strip Length 6.0 mm
Screw Size M3



See Technical Data section for screw material options

Approvals:



series 8113 B / F OB pitch 5.00 mm

Box Qty	G	T	Pole	unmarked	marked	unmarked with screw flange	marked with screw flange
				Part Number	Part Number	Part Number	Part Number
100	10	5	2	25.320.3253.0	25.320.0253.0	25.322.3253.0	25.322.0253.0
100	15	10	3	25.320.3353.0	25.320.0353.0	25.322.3353.0	25.322.0353.0
50	20	15	4	25.320.3453.0	25.320.0453.0	25.322.3453.0	25.322.0453.0
50	25	20	5	25.320.3553.0	25.320.0553.0	25.322.3553.0	25.322.0553.0
50	30	25	6	25.320.3653.0	25.320.0653.0	25.322.3653.0	25.322.0653.0
50	35	30	7	25.320.3753.0	25.320.0753.0	25.322.3753.0	25.322.0753.0
50	40	35	8	25.320.3853.0	25.320.0853.0	25.322.3853.0	25.322.0853.0
50	45	40	9	25.320.3953.0	25.320.0953.0	25.322.3953.0	25.322.0953.0
50	50	45	10	25.320.4053.0	25.320.1053.0	25.322.4053.0	25.322.1053.0
50	55	50	11	25.320.4153.0	25.320.1153.0	25.322.4153.0	25.322.1153.0
50	60	55	12	25.320.4253.0	25.320.1253.0	25.322.4253.0	25.322.1253.0
50	65	60	13	25.320.4353.0	25.320.1353.0	25.322.4353.0	25.322.1353.0
50	70	65	14	25.320.4453.0	25.320.1453.0	25.322.4453.0	25.322.1453.0
50	75	70	15	25.320.4553.0	25.320.1553.0	25.322.4553.0	25.322.1553.0
50	80	75	16	25.320.4653.0	25.320.1653.0	25.322.4653.0	25.322.1653.0

series 8213 B / F OB pitch 5.08 mm

Box Qty	G	T	Pole	unmarked	marked	unmarked with screw flange	marked with screw flange
				Part Number	Part Number	Part Number	Part Number
100	10.16	5.08	2	25.340.3253.0	25.340.0253.0	25.323.3253.0	25.323.0253.0
100	15.24	10.16	3	25.340.3353.0	25.340.0353.0	25.323.3353.0	25.323.0353.0
50	20.32	15.24	4	25.340.3453.0	25.340.0453.0	25.323.3453.0	25.323.0453.0
50	25.40	20.32	5	25.340.3553.0	25.340.0553.0	25.323.3553.0	25.323.0553.0
50	30.48	25.40	6	25.340.3653.0	25.340.0653.0	25.323.3653.0	25.323.0653.0
50	35.56	30.48	7	25.340.3753.0	25.340.0753.0	25.323.3753.0	25.323.0753.0
50	40.64	35.56	8	25.340.3853.0	25.340.0853.0	25.323.3853.0	25.323.0853.0
50	45.72	40.64	9	25.340.3953.0	25.340.0953.0	25.323.3953.0	25.323.0953.0
50	50.80	45.72	10	25.340.4053.0	25.340.1053.0	25.323.4053.0	25.323.1053.0
50	55.88	50.80	11	25.340.4153.0	25.340.1153.0	25.323.4153.0	25.323.1153.0
50	60.96	55.88	12	25.340.4253.0	25.340.1253.0	25.323.4253.0	25.323.1253.0
50	66.04	60.96	13	25.340.4353.0	25.340.1353.0	25.323.4353.0	25.323.1353.0
50	71.12	66.04	14	25.340.4453.0	25.340.1453.0	25.323.4453.0	25.323.1453.0
50	76.20	71.12	15	25.340.4553.0	25.340.1553.0	25.323.4553.0	25.323.1553.0
50	81.28	76.20	16	25.340.4653.0	25.340.1653.0	25.323.4653.0	25.323.1653.0

Custom Marking Available
More poles available on request

Pluggable PCB terminals series 8113 / 8213, rising cage clamp system

pitch 5.00 / 5.08 mm

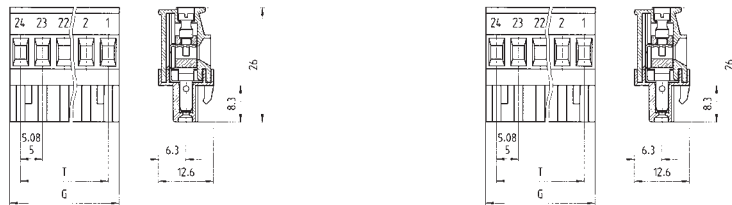
IEC	250 V 4kV cat.3	12 A	0.14 - 2.5 mm ² (Stranded)
	400 V 4kV cat.2		0.14 - 2.5 mm ² (Solid)
	1000 V 4kV cat.1		
UL	300 V	15 A	22 - 12 AWG
CSA	300 V	15 A	22 - 12 AWG

Wire Strip Length	6.0 mm
Screw Size	M3



See Technical Data section for screw material options

Approvals:



series 8113 B VR / F pitch 5.00 mm

Box Qty	G	T	Pole	unmarked		marked	
				Part Number	Part Number	Part Number	Part Number
100	10	5	2	25.325.3253.0	25.325.0253.0		
100	15	10	3	25.325.3353.0	25.325.0353.0		
50	20	15	4	25.325.3453.0	25.325.0453.0		
50	25	20	5	25.325.3553.0	25.325.0553.0		
50	30	25	6	25.325.3653.0	25.325.0653.0		
50	35	30	7	25.325.3753.0	25.325.0753.0		
50	40	35	8	25.325.3853.0	25.325.0853.0		
50	45	40	9	25.325.3953.0	25.325.0953.0		
50	50	45	10	25.325.4053.0	25.325.1053.0		
50	55	50	11	25.325.4153.0	25.325.1153.0		
50	60	55	12	25.325.4253.0	25.325.1253.0		
50	65	60	13	25.325.4353.0	25.325.1353.0		
50	70	65	14	25.325.4453.0	25.325.1453.0		
50	75	70	15	25.325.4553.0	25.325.1553.0		
50	80	75	16	25.325.4653.0	25.325.1653.0		

series 8213 B VR / F pitch 5.08 mm

Box Qty	G	T	Pole	unmarked		unmarked with screw flange		marked with screw flange	
				Part Number	Part Number	Part Number	Part Number	Part Number	Part Number
100	10.16	5.08	2	25.345.3253.0	25.345.0253.0	25.344.3253.0		25.344.0253.0	
100	15.24	10.16	3	25.345.3353.0	25.345.0353.0	25.344.3353.0		25.344.0353.0	
50	20.32	15.24	4	25.345.3453.0	25.345.0453.0	25.344.3453.0		25.344.0453.0	
50	25.40	20.32	5	25.345.3553.0	25.345.0553.0	25.344.3553.0		25.344.0553.0	
50	30.48	25.40	6	25.345.3653.0	25.345.0653.0	25.344.3653.0		25.344.0653.0	
50	35.56	30.48	7	25.345.3753.0	25.345.0753.0	25.344.3753.0		25.344.0753.0	
50	40.64	35.56	8	25.345.3853.0	25.345.0853.0	25.344.3853.0		25.344.0853.0	
50	45.72	40.64	9	25.345.3953.0	25.345.0953.0	25.344.3953.0		25.344.0953.0	
50	50.80	45.72	10	25.345.4053.0	25.345.1053.0	25.344.4053.0		25.344.1053.0	
50	55.88	50.80	11	25.345.4153.0	25.345.1153.0	25.344.4153.0		25.344.1153.0	
50	60.96	55.88	12	25.345.4253.0	25.345.1253.0	25.344.4253.0		25.344.1253.0	
50	66.04	60.96	13	25.345.4353.0	25.345.1353.0	25.344.4353.0		25.344.1353.0	
50	71.12	66.04	14	25.345.4453.0	25.345.1453.0	25.344.4453.0		25.344.1453.0	
50	76.20	71.12	15	25.345.4553.0	25.345.1553.0	25.344.4553.0		25.344.1553.0	
50	81.28	76.20	16	25.345.4653.0	25.345.1653.0	25.344.4653.0		25.344.1653.0	

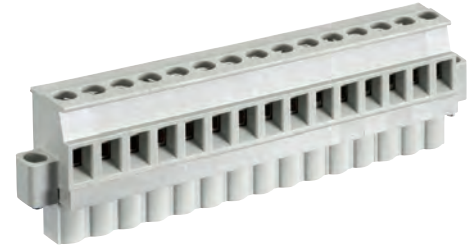
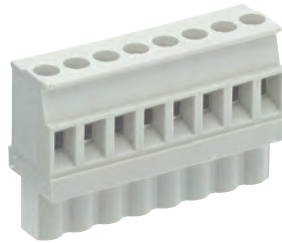
Custom Marking Available
More poles available on request

Pluggable PCB terminals series 8113 / 8213, rising cage clamp system

pitch 5.00 / 5.08 mm

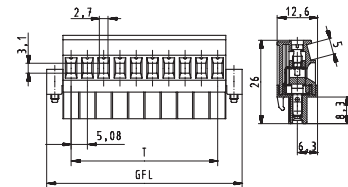
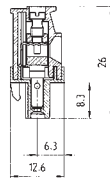
IEC	250 V 4kV cat.3 400 V 4kV cat.2 1000 V 4kV cat.1	12 A	0.14 - 2.5 mm ² (Stranded) 0.14 - 2.5 mm ² (Solid)
UL	300 V	15 A	22 - 12 AWG
CSA	300 V	15 A	22 - 12 AWG

Wire Strip Length 6.0 mm
Screw Size M3



See Technical Data section for screw material options

Approvals:



series 8113 B VL / F pitch 5.00 mm

Box Qty	G	T	Pole
100	10	5	2
100	15	10	3
50	20	15	4
50	25	20	5
50	30	25	6
50	35	30	7
50	40	35	8
50	45	40	9
50	50	45	10
50	55	50	11
50	60	55	12
50	65	60	13
50	70	65	14
50	75	70	15
50	80	75	16

unmarked

marked

Part Number	Part Number	Part Number	Part Number
25.326.3253.0	25.326.0253.0		
25.326.3353.0	25.326.0353.0		
25.326.3453.0	25.326.0453.0		
25.326.3553.0	25.326.0553.0		
25.326.3653.0	25.326.0653.0		
25.326.3753.0	25.326.0753.0		
25.326.3853.0	25.326.0853.0		
25.326.3953.0	25.326.0953.0		
25.326.4053.0	25.326.1053.0		
25.326.4153.0	25.326.1153.0		
25.326.4253.0	25.326.1253.0		
25.326.4353.0	25.326.1353.0		
25.326.4453.0	25.326.1453.0		
25.326.4553.0	25.326.1553.0		
25.326.4653.0	25.326.1653.0		

series 8213 B VL / F pitch 5.08 mm

Box Qty	G	T	Pole
100	10.16	5.08	2
100	15.24	10.16	3
50	20.32	15.24	4
50	25.40	20.32	5
50	30.48	25.40	6
50	35.56	30.48	7
50	40.64	35.56	8
50	45.72	40.64	9
50	50.80	45.72	10
50	55.88	50.80	11
50	60.96	55.88	12
50	66.04	60.96	13
50	71.12	66.04	14
50	76.20	71.12	15
50	81.28	76.20	16

unmarked

marked

unmarked
with screw flange

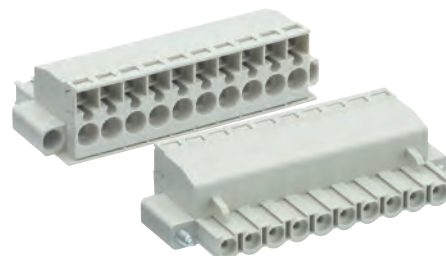
marked
with screw flange

Part Number	Part Number	Part Number	Part Number
25.346.3253.0	25.346.0253.0	25.349.3253.0	25.349.0253.0
25.346.3353.0	25.346.0353.0	25.349.3353.0	25.349.0353.0
25.346.3453.0	25.346.0453.0	25.349.3453.0	25.349.0453.0
25.346.3553.0	25.346.0553.0	25.349.3553.0	25.349.0553.0
25.346.3653.0	25.346.0653.0	25.349.3653.0	25.349.0653.0
25.346.3753.0	25.346.0753.0	25.349.3753.0	25.349.0753.0
25.346.3853.0	25.346.0853.0	25.349.3853.0	25.349.0853.0
25.346.3953.0	25.346.0953.0	25.349.3953.0	25.349.0953.0
25.346.4053.0	25.346.1053.0	25.349.4053.0	25.349.1053.0
25.346.4153.0	25.346.1153.0	25.349.4153.0	25.349.1153.0
25.346.4253.0	25.346.1253.0	25.349.4253.0	25.349.1253.0
25.346.4353.0	25.346.1353.0	25.349.4353.0	25.349.1353.0
25.346.4453.0	25.346.1453.0	25.349.4453.0	25.349.1453.0
25.346.4553.0	25.346.1553.0	25.349.4553.0	25.349.1553.0
25.346.4653.0	25.346.1653.0	25.349.4653.0	25.349.1653.0

Pluggable PCB terminals series 8113 / 8213, spring clamp system

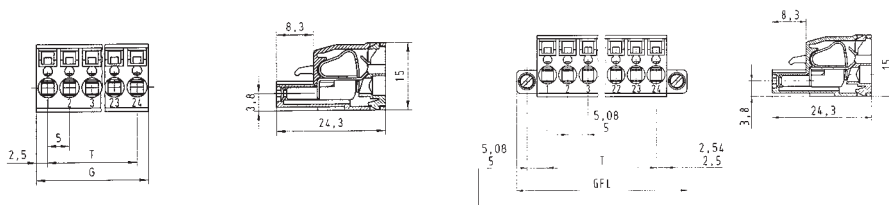
pitch 5.00 / 5.08 mm

IEC	250 V 4kV cat.3 400 V 4kV cat.2 1000 V 4kV cat.1	12 A	0.14 - 2.5 mm ² (Stranded) 0.14 - 2.5 mm ² (Solid)
UL	300 V	12 A	22 - 12 AWG
CSA		12 A	22 - 12 AWG
Wire Strip Length			11.0 mm



See Technical Data section for screw material options

Approvals:



series 8113 BFK/BFK F pitch 5.00 mm

Box Qty	G	T	Pole
100	10	5	2
100	15	10	3
50	20	15	4
50	25	20	5
50	30	25	6
50	35	30	7
50	40	35	8
50	45	40	9
50	50	45	10
50	55	50	11
50	60	55	12
50	65	60	13
50	70	65	14
50	75	70	15
50	80	75	16

unmarked	marked	unmarked with screw flange	marked with screw flange
Part Number	Part Number	Part Number	Part Number
25.820.3253.0	25.820.0253.0	25.821.3253.0	25.821.0253.0
25.820.3353.0	25.820.0353.0	25.821.3353.0	25.821.0353.0
25.820.3453.0	25.820.0453.0	25.821.3453.0	25.821.0453.0
25.820.3553.0	25.820.0553.0	25.821.3553.0	25.821.0553.0
25.820.3653.0	25.820.0653.0	25.821.3653.0	25.821.0653.0
25.820.3753.0	25.820.0753.0	25.821.3753.0	25.821.0753.0
25.820.3853.0	25.820.0853.0	25.821.3853.0	25.821.0853.0
25.820.3953.0	25.820.0953.0	25.821.3953.0	25.821.0953.0
25.820.4053.0	25.820.1053.0	25.821.4053.0	25.821.1053.0
25.820.4153.0	25.820.1153.0	25.821.4153.0	25.821.1153.0
25.820.4253.0	25.820.1253.0	25.821.4253.0	25.821.1253.0
25.820.4353.0	25.820.1353.0	25.821.4353.0	25.821.1353.0
25.820.4453.0	25.820.1453.0	25.821.4453.0	25.821.1453.0
25.820.4553.0	25.820.1553.0	25.821.4553.0	25.821.1553.0
25.820.4653.0	25.820.1653.0	25.821.4653.0	25.821.1653.0

series 8213 BFK/BFK F pitch 5.08 mm

Box Qty	G	T	Pole
100	10.16	5.08	2
100	15.24	10.16	3
50	20.32	15.24	4
50	25.40	20.32	5
50	30.48	25.40	6
50	35.56	30.48	7
50	40.64	35.56	8
50	45.72	40.64	9
50	50.80	45.72	10
50	55.88	50.80	11
50	60.96	55.88	12
50	66.04	60.96	13
50	71.12	66.04	14
50	76.20	71.12	15
50	81.28	76.20	16

unmarked	marked	unmarked with screw flange	marked with screw flange
Part Number	Part Number	Part Number	Part Number
25.840.3253.0	25.840.0253.0	25.841.3253.0	25.841.0253.0
25.840.3353.0	25.840.0353.0	25.841.3353.0	25.841.0353.0
25.840.3453.0	25.840.0453.0	25.841.3453.0	25.841.0453.0
25.840.3553.0	25.840.0553.0	25.841.3553.0	25.841.0553.0
25.840.3653.0	25.840.0653.0	25.841.3653.0	25.841.0653.0
25.840.3753.0	25.840.0753.0	25.841.3753.0	25.841.0753.0
25.840.3853.0	25.840.0853.0	25.841.3853.0	25.841.0853.0
25.840.3953.0	25.840.0953.0	25.841.3953.0	25.841.0953.0
25.840.4053.0	25.840.1053.0	25.841.4053.0	25.841.1053.0
25.840.4153.0	25.840.1153.0	25.841.4153.0	25.841.1153.0
25.840.4253.0	25.840.1253.0	25.841.4253.0	25.841.1253.0
25.840.4353.0	25.840.1353.0	25.841.4353.0	25.841.1353.0
25.840.4453.0	25.840.1453.0	25.841.4453.0	25.841.1453.0
25.840.4553.0	25.840.1553.0	25.841.4553.0	25.841.1553.0
25.840.4653.0	25.840.1653.0	25.841.4653.0	25.841.1653.0

Custom Marking Available
More poles available on request

Pluggable PCB terminals series 8113 / 8213, TOP connection system

pitch 5.00 / 5.08 mm

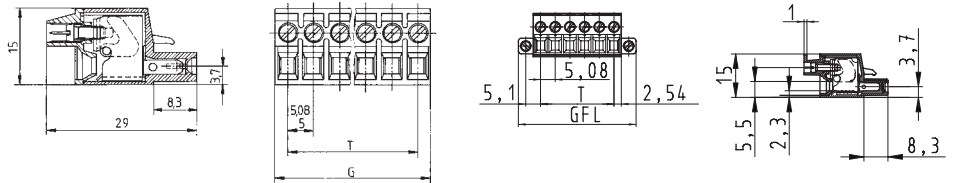
IEC	250 V 4kV cat.3 400 V 4kV cat.2 1000 V 4kV cat.1	12 A	0.14 - 2.5 mm ² (Stranded) 0.14 - 2.5 mm ² (Solid)
UL	300 V	15 A	22 - 12 AWG
CSA	300 V	15 A	22 - 12 AWG

Wire Strip Length 9.5 mm
Screw Size M2.5



See Technical Data section for screw material options

Approvals:



series 8113 B TOP pitch 5.00 mm

Box Qty	G	T	Pole
100	10	5	2
100	15	10	3
50	20	15	4
50	25	20	5
50	30	25	6
50	35	30	7
50	40	35	8
50	45	40	9
50	50	45	10
50	55	50	11
50	60	55	12
50	65	60	13
50	70	65	14
50	75	70	15
50	80	75	16

unmarked

marked

Part Number	Part Number	Part Number	Part Number
25.220.3253.0	25.220.0253.0		
25.220.3353.0	25.220.0353.0		
25.220.3453.0	25.220.0453.0		
25.220.3553.0	25.220.0553.0		
25.220.3653.0	25.220.0653.0		
25.220.3753.0	25.220.0753.0		
25.220.3853.0	25.220.0853.0		
25.220.3953.0	25.220.0953.0		
25.220.4053.0	25.220.1053.0		
25.220.4153.0	25.220.1153.0		
25.220.4253.0	25.220.1253.0		
25.220.4353.0	25.220.1353.0		
25.220.4453.0	25.220.1453.0		
25.220.4553.0	25.220.1553.0		
25.220.4653.0	25.220.1653.0		

series 8213 B TOP / F pitch 5.08 mm

Box Qty	G	T	Pole
100	10.16	5.08	2
100	15.24	10.16	3
50	20.32	15.24	4
50	25.40	20.32	5
50	30.48	25.40	6
50	35.56	30.48	7
50	40.64	35.56	8
50	45.72	40.64	9
50	50.80	45.72	10
50	55.88	50.80	11
50	60.96	55.88	12
50	66.04	60.96	13
50	71.12	66.04	14
50	76.20	71.12	15
50	81.28	76.20	16

unmarked

marked

unmarked
with screw flange

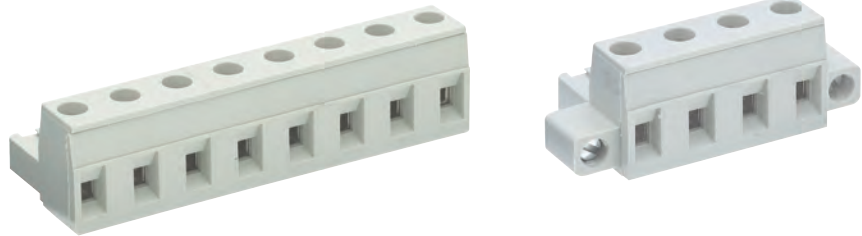
marked
with screw flange

Part Number	Part Number	Part Number	Part Number
25.240.3253.0	25.240.0253.0	25.245.3253.0	25.245.0253.0
25.240.3353.0	25.240.0353.0	25.245.3353.0	25.245.0353.0
25.240.3453.0	25.240.0453.0	25.245.3453.0	25.245.0453.0
25.240.3553.0	25.240.0553.0	25.245.3553.0	25.245.0553.0
25.240.3653.0	25.240.0653.0	25.245.3653.0	25.245.0653.0
25.240.3753.0	25.240.0753.0	25.245.3753.0	25.245.0753.0
25.240.3853.0	25.240.0853.0	25.245.3853.0	25.245.0853.0
25.240.3953.0	25.240.0953.0	25.245.3953.0	25.245.0953.0
25.240.4053.0	25.240.1053.0	25.245.4053.0	25.245.1053.0
25.240.4153.0	25.240.1153.0	25.245.4153.0	25.245.1153.0
25.240.4253.0	25.240.1253.0	25.245.4253.0	25.245.1253.0
25.240.4353.0	25.240.1353.0	25.245.4353.0	25.245.1353.0
25.240.4453.0	25.240.1453.0	25.245.4453.0	25.245.1453.0
25.240.4553.0	25.240.1553.0	25.245.4553.0	25.245.1553.0
25.240.4653.0	25.240.1653.0	25.245.4653.0	25.245.1653.0

Pluggable PCB terminals series 8313 / 8413, rising cage clamp system

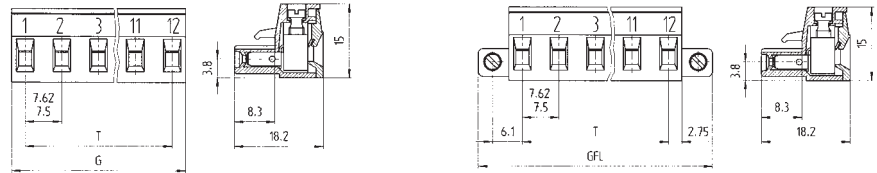
pitch 7.50 / 7.62 mm

IEC	400 V 4kV cat.3 690 V 4kV cat.2 1000 V 4kV cat.1	12 A	0.14 - 2.5 mm ² (Stranded) 0.14 - 2.5 mm ² (Solid)
UL	300 V	15 A	22 - 12 AWG
CSA	300 V	15 A	22 - 12 AWG
Wire Strip Length	6.0 mm		
Screw Size	M3		



See Technical Data section for screw material options

Approvals:



series 8313 B/B F pitch 7.50 mm

Box Qty	G	T	Pole
100	13.00	7.50	2
100	20.50	15.00	3
50	28.00	22.50	4
50	35.50	30.00	5
50	43.00	37.50	6
50	50.50	45.00	7
50	58.00	52.50	8
50	65.50	60.00	9
50	73.00	67.50	10
50	80.50	75.00	11
50	88.00	82.50	12

unmarked		marked		unmarked with screw flange		marked with screw flange	
Part Number	Part Number	Part Number	Part Number	Part Number	Part Number	Part Number	Part Number
25.360.3253.0	25.360.0253.0	25.324.2253.0	25.324.0253.0				
25.360.3353.0	25.360.0353.0	25.324.2353.0	25.324.0353.0				
25.360.3453.0	25.360.0453.0	25.324.2453.0	25.324.0453.0				
25.360.3553.0	25.360.0553.0	25.324.2553.0	25.324.0553.0				
25.360.3653.0	25.360.0653.0	25.324.2653.0	25.324.0653.0				
25.360.3753.0	25.360.0753.0	25.324.2753.0	25.324.0753.0				
25.360.3853.0	25.360.0853.0	25.324.2853.0	25.324.0853.0				
25.360.3953.0	25.360.0953.0	25.324.2953.0	25.324.0953.0				
25.360.4053.0	25.360.1053.0	25.324.3053.0	25.324.1053.0				
25.360.4153.0	25.360.1153.0	25.324.3153.0	25.324.1153.0				
25.360.4253.0	25.360.1253.0	25.324.3253.0	25.324.1253.0				

series 8413 B/B F pitch 7.62 mm

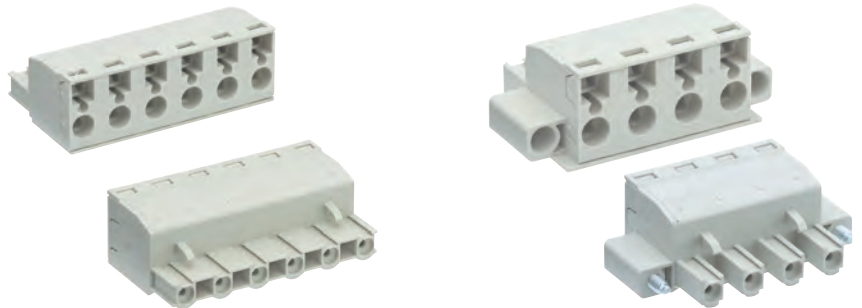
Box Qty	G	T	Pole
100	13.12	7.62	2
100	20.74	15.24	3
50	28.36	22.86	4
50	35.98	30.48	5
50	43.60	38.10	6
50	51.22	45.72	7
50	58.84	53.34	8
50	66.46	60.96	9
50	74.08	68.58	10
50	81.70	76.20	11
50	89.32	83.82	12

unmarked		marked		unmarked with screw flange		marked with screw flange	
Part Number	Part Number	Part Number	Part Number	Part Number	Part Number	Part Number	Part Number
25.380.3253.0	25.380.0253.0	25.324.6253.0	25.324.4253.0				
25.380.3353.0	25.380.0353.0	25.324.6353.0	25.324.4353.0				
25.380.3453.0	25.380.0453.0	25.324.6453.0	25.324.4453.0				
25.380.3553.0	25.380.0553.0	25.324.6553.0	25.324.4553.0				
25.380.3653.0	25.380.0653.0	25.324.6653.0	25.324.4653.0				
25.380.3753.0	25.380.0753.0	25.324.6753.0	25.324.4753.0				
25.380.3853.0	25.380.0853.0	25.324.6853.0	25.324.4853.0				
25.380.3953.0	25.380.0953.0	25.324.6953.0	25.324.4953.0				
25.380.4053.0	25.380.1053.0	25.324.7053.0	25.324.5053.0				
25.380.4153.0	25.380.1153.0	25.324.7153.0	25.324.5153.0				
25.380.4253.0	25.380.1253.0	25.324.7253.0	25.324.5253.0				

Pluggable PCB terminal series 8413, spring clamp system

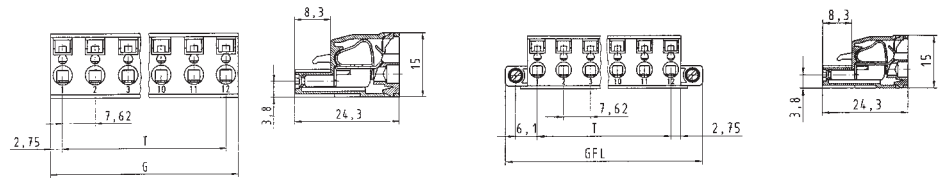
pitch 7.62 mm

IEC	400 V 6kV cat.3 690 V 6kV cat.2 1000 V 6kV cat.1	12 A	0.14 - 2.5 mm ² (Stranded) 0.14 - 2.5 mm ² (Solid)
UL	300 V	12 A	22 - 12 AWG
CSA			
Wire Strip Length			11.0 mm



See Technical Data section for screw material options

Approvals:



Box Qty	G	T	Pole	Part Number	Part Number	Part Number	Part Number

series 8413 BFK/BFK F pitch 7.62 mm				unmarked	marked	unmarked	marked
Box Qty	G	T	Pole	Part Number	Part Number	Part Number	Part Number
100	13.12	7.62	2	25.880.3253.0	25.880.0253.0	25.881.3253.0	25.881.0253.0
100	20.74	15.24	3	25.880.3353.0	25.880.0353.0	25.881.3353.0	25.881.0353.0
50	28.36	22.86	4	25.880.3453.0	25.880.0453.0	25.881.3453.0	25.881.0453.0
50	35.98	30.48	5	25.880.3553.0	25.880.0553.0	25.881.3553.0	25.881.0553.0
50	43.60	38.10	6	25.880.3653.0	25.880.0653.0	25.881.3653.0	25.881.0653.0
50	51.22	45.72	7	25.880.3753.0	25.880.0753.0	25.881.3753.0	25.881.0753.0
50	58.84	53.34	8	25.880.3853.0	25.880.0853.0	25.881.3853.0	25.881.0853.0
50	66.46	60.96	9	25.880.3953.0	25.880.0953.0	25.881.3953.0	25.881.0953.0
50	74.08	68.58	10	25.880.4053.0	25.880.1053.0	25.881.4053.0	25.881.1053.0
50	81.70	76.20	11	25.880.4153.0	25.880.1153.0	25.881.4153.0	25.881.1153.0
50	89.32	83.82	12	25.880.4253.0	25.880.1253.0	25.881.4253.0	25.881.1253.0

Custom Marking Available
More poles available on request

PCB terminal series 8276, rising cage clamp system

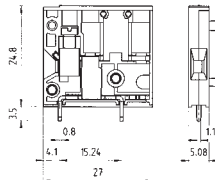
pitch 5.08 mm

IEC	250 V 4kV cat.3	26 A	0.14 - 2.5 mm ² (Stranded)
	400 V 4kV cat.2		0.14 - 4.0 mm ² (Solid)
	1000 V 4kV cat.1		
UL	300 V	15 A (Field)	30 - 14 AWG
		23 A (Factory)	
CSA	300 V	20 A	30 - 14 AWG
Solder Pin		0.8 x 1.1 mm	
Drill Hole		1.4 mm	
Wire Strip Length		6.0 mm	
Screw Size		M4	



See Technical Data section for screw material options

Approvals:



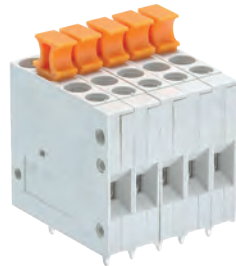
Box Qty	G	T	Pole	Part Number	Part Number	Part Number	Part Number

series 8276 pitch 5.08 mm				modular terminal			
Box Qty	G	T	Pole	Part Number	Part Number	Part Number	Part Number
100			1	25.720.1353.0			

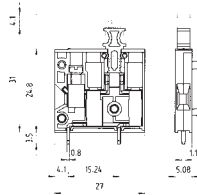
PCB terminal series 8276, rising cage clamp system

pitch 5.08 mm

IEC	250 V 4kV cat.3 400 V 4kV cat.2 1000 V 4kV cat.1	15 A	0.14 - 2.5 mm ² (Stranded) 0.14 - 4.0 mm ² (Solid)
UL	300 V	15 A	30 - 14 AWG
CSA	300 V	15 A	30 - 14 AWG
Solder Pin	0.8 x 1.1 mm		
Drill Hole	1.4 mm		
Wire Strip Length	6.0 mm		
Screw Size	M4		



See Technical Data section for screw material options



Approvals:



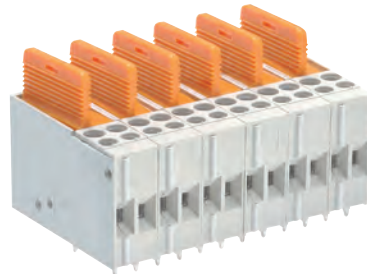
Box Qty	G	T	Pole	Part Number	Part Number	Part Number	Part Number

series 8276 TKS pitch 5.08 mm				disconnect terminal			
Box Qty	G	T	Pole	Part Number	Part Number	Part Number	Part Number
100			1	25.720.1453.0			

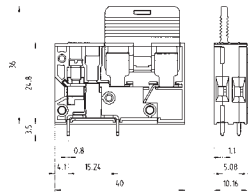
PCB terminal series 8276, rising cage clamp system

pitch 5.08 mm

IEC	250 V 4kV cat.3	6.3 A	0.14 - 2.5 mm ² (Stranded)
	690 V 4kV cat.2		0.14 - 4.0 mm ² (Solid)
	1000 V 4kV cat.1		
UL	300 V	6.3 A	30 - 14 AWG
CSA	300 V	6.3 A	30 - 14 AWG
Solder Pin	0.8 x 1.1 mm		
Drill Hole	1.4 mm		
Wire Strip Length	6.0 mm		
Screw Size	M3		



See Technical Data section for screw material options



Approvals:



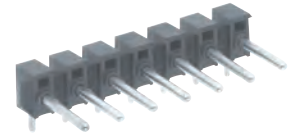
Box Qty	G	T	Pole	Part Number	Part Number	Part Number	Part Number

series 8276 Si-D pitch 5.08 mm				fuse terminal (for Si 5 x 20)			
Box Qty	G	T	Pole	Part Number	Part Number	Part Number	Part Number
100			1	25.720.1653.0			

Accessories PCB pin header

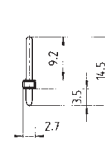
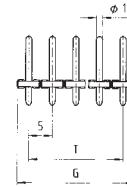
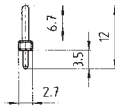
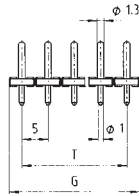
pitch 5.00 mm

IEC	200 V 4kV cat.3	8 A
	250 V 4kV cat.2	
	1000 V 4kV cat.1	
UL	300 V	15 A
CSA	300 V	15 A



See Technical Data section for screw material options

Approvals:



PCB pin header pitch 5.00 mm				Grey pin Ø 1.0 mm drill Ø 1.3mm	Black pin Ø 1.3 mm drill Ø 1.6mm	Black pin Ø 1.0 mm drill Ø 1.3mm	Black pin Ø 1.3 mm drill Ø 1.6mm
Box Qty	G	T	Pole	Part Number	Part Number	Part Number	Part Number
100	10	5	2	Z5.530.0225.0	Z5.530.3225.0	Z5.540.0225.0	Z5.540.3225.0
100	15	10	3	Z5.530.0325.0	Z5.530.3325.0	Z5.540.0325.0	Z5.540.3325.0
50	20	15	4	Z5.530.0425.0	Z5.530.3425.0	Z5.540.0425.0	Z5.540.3425.0
50	25	20	5	Z5.530.0525.0	Z5.530.3525.0	Z5.540.0525.0	Z5.540.3525.0
50	30	25	6	Z5.530.0625.0	Z5.530.3625.0	Z5.540.0625.0	Z5.540.3625.0
50	35	30	7	Z5.530.0725.0	Z5.530.3725.0	Z5.540.0725.0	Z5.540.3725.0
50	40	35	8	Z5.530.0825.0	Z5.530.3825.0	Z5.540.0825.0	Z5.540.3825.0
50	45	40	9	Z5.530.0925.0	Z5.530.3925.0	Z5.540.0925.0	Z5.540.3925.0
50	50	45	10	Z5.530.1025.0	Z5.530.4025.0	Z5.540.1025.0	Z5.540.4025.0
50	55	50	11	Z5.530.1125.0	Z5.530.4125.0	Z5.540.1125.0	Z5.540.4125.0
50	60	55	12	Z5.530.1225.0	Z5.530.4225.0	Z5.540.1225.0	Z5.540.4225.0
50	65	60	13	Z5.530.1325.0	Z5.530.4325.0	Z5.540.1325.0	Z5.540.4325.0
50	70	65	14	Z5.530.1425.0	Z5.530.4425.0	Z5.540.1425.0	Z5.540.4425.0
50	75	70	15	Z5.530.1525.0	Z5.530.4525.0	Z5.540.1525.0	Z5.540.4525.0
50	80	75	16	Z5.530.1625.0	Z5.530.4625.0	Z5.540.1625.0	Z5.540.4625.0

Box Qty	G	T	Pole	Part Number	Part Number	Part Number	Part Number

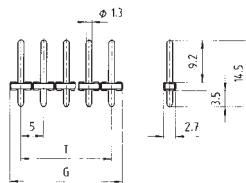
Accessories PCB pin header

pitch 5.00 mm

IEC	250 V 2.5kV cat.3	8 A
UL	300 V	10 A
CSA	300 V	10 A
Solder Pin	1.0 x 1.0 mm	
Drill Hole	1.3 mm	



See Technical Data section for screw material options



Approvals:



PCB pin header pitch 5.00 mm				THR box	THR tape on reel	Part Number	Part Number
Box Qty	G	T	Pole	Part Number	Part Number	Part Number	Part Number
100	10	5	2	Z5.530.0204.0	Z5.530.0214.0		
100	15	10	3	Z5.530.0304.0	Z5.530.0314.0		
50	20	15	4	Z5.530.0404.0	Z5.530.0414.0		
50	25	20	5	Z5.530.0504.0	Z5.530.0514.0		
50	30	25	6	Z5.530.0604.0	Z5.530.0614.0		
50	35	30	7	Z5.530.0704.0	Z5.530.0714.0		
50	40	35	8	Z5.530.0804.0	Z5.530.0814.0		
50	45	40	9	Z5.530.0904.0	Z5.530.0914.0		
50	50	45	10	Z5.530.1004.0	Z5.530.1014.0		
50	55	50	11	Z5.530.1104.0	Z5.530.1114.0		
50	60	55	12	Z5.530.1204.0	Z5.530.1214.0		

Box Qty	G	T	Pole	Part Number	Part Number	Part Number	Part Number

Custom Marking Available
More poles available on request

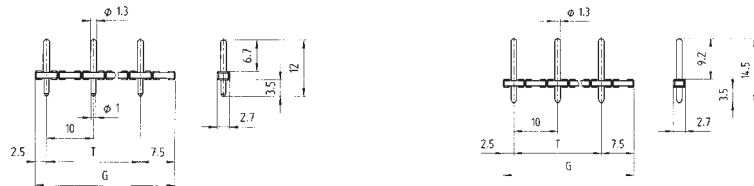
Accessories PCB pin header

pitch 10.00 mm

IEC	500 V <small>8kV cat.3</small>	8 A
	800 V <small>8kV cat.2</small>	
	1000 V <small>8kV cat.1</small>	
UL	300 V	15 A
CSA	300 V	15 A



See Technical Data section for screw material options



Approvals:



PCB pin header pitch 10.00 mm				Grey pin Ø 1.0 mm drill Ø 1.3mm	Black pin Ø 1.3 mm drill Ø 1.6mm	Black pin Ø 1.0 mm drill Ø 1.3mm	Black pin Ø 1.3 mm drill Ø 1.6mm
Box Qty	G	T	Pole	Part Number	Part Number	Part Number	Part Number
50	20	10	2	Z5.530.6225.0	Z5.530.8225.0	Z5.540.6225.0	Z5.540.8225.0
50	30	20	3	Z5.530.6325.0	Z5.530.8325.0	Z5.540.6325.0	Z5.540.8325.0
50	40	30	4	Z5.530.6425.0	Z5.530.8425.0	Z5.540.6425.0	Z5.540.8425.0
50	50	40	5	Z5.530.6525.0	Z5.530.8525.0	Z5.540.6525.0	Z5.540.8525.0
50	60	50	6	Z5.530.6625.0	Z5.530.8625.0	Z5.540.6625.0	Z5.540.8625.0
50	70	60	7	Z5.530.6725.0	Z5.530.8725.0	Z5.540.6725.0	Z5.540.8725.0
50	80	70	8	Z5.530.6825.0	Z5.530.8825.0	Z5.540.6825.0	Z5.540.8825.0

Box Qty	G	T	Pole	Part Number	Part Number	Part Number	Part Number

Accessories mounting bracket

pitch 5.00/5.08 mm

Screw Size		M3



See Technical Data section for screw material options

Approvals:

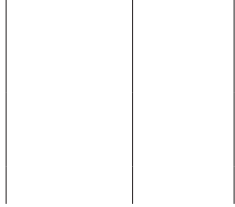


mounting bracket		vertical mounting	horizontal mounting	vertical mounting	horizontal mounting
		Part Number	Part Number	Part Number	Part Number
Box Qty					
100	Mounting Bracket	Z5.523.2453.0	Z5.523.2453.0	Z5.523.7853.0	Z5.523.7753.0
50	End plate for two tier header	07.310.9853.0	07.310.9853.0		
100	Coding branch for header	05.561.0053.0	05.561.0053.0		
100	Socket connector	05.561.9153.0	05.561.9153.0		

mounting bracket				Part Number	Part Number	Part Number	Part Number
Box Qty	G	T	Pole				

Accessories mounting bracket

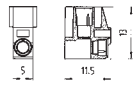
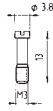
pitch 5.00/5.08 mm



Screw Size

M3

See Technical Data section for screw material options



Approvals:



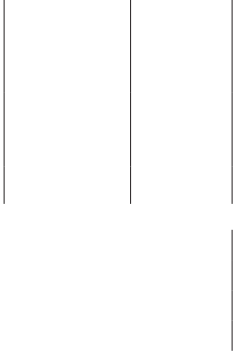
mounting bracket		vertical mounting		horizontal mounting	
Box Qty		Part Number	Part Number	Part Number	Part Number
100	Mounting Bracket	Z5.523.7653.0		Z5.523.7653.0	
25	Coding branch white	05.561.9453.0		05.561.9453.0	
25	Coding branch orange	05.561.9453.5		05.561.9453.5	

mounting bracket							
Box Qty	G	T	Pole	Part Number	Part Number	Part Number	Part Number

Custom Marking Available
More poles available on request

Accessories jumper comb

pitch 5.00/5.08 mm



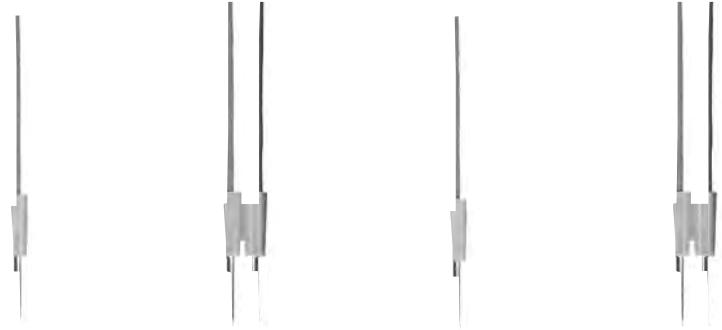
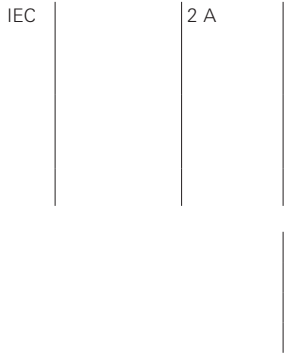
See Technical Data section for screw material options

Approvals:

jumper comb pitch 5.00 mm				connecting comb		unmarked with insulating plate with locating cams	marked with insulating plate with locating cams
Box Qty	G	T	Pole	Part Number	Part Number	Part Number	Part Number
100			2 - 24	available on request			

jumper comb pitch 5.08 mm				connecting comb		unmarked with insulating plate with locating cams	marked with insulating plate with locating cams
Box Qty	G	T	Pole	Part Number	Part Number	Part Number	Part Number
100			2-24	available on request			

Accessories test plug



See Technical Data section for screw material options

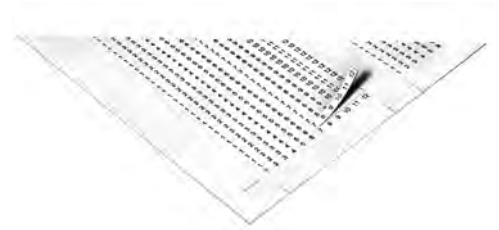
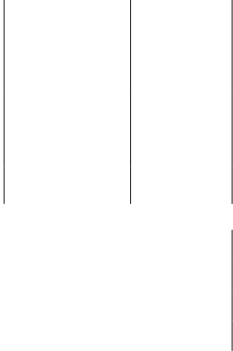
Approvals:

test plug		test plug 1 pole for 8391/8491	test plug 2 pole for 8391/8491	test plug 1 pole for 8135 / 8235 / 8191 ZW / 8291 ZW / 8192	test plug 2 pole for 8135 / 8235 / 8191 ZW / 8291 ZW / 8192
Box Qty	Pole	Part Number	Part Number	Part Number	Part Number
100	1	Z5.533.7121.0		Z5.533.7121.0	
50	2		Z5.533.8221.0		Z5.533.7221.0

Box Qty	G	T	Pole	Part Number	Part Number	Part Number	Part Number

Accessories marker tag

pitch 5.00 mm



See Technical Data section for screw material options

Approvals:

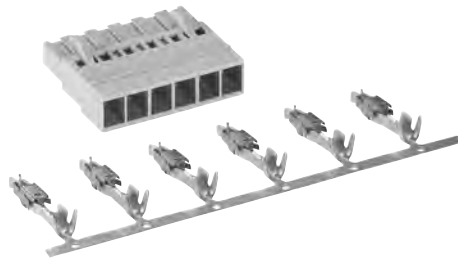
marker tag pitch 5.00 mm			marker tag carrier	Marker tag, unmarked	Adhesive marking strips (1 sheet = 100 strips)	
Box Qty	Pole		Part Number	Part Number	Part Number	Part Number
50	12		04.242.4653.0			
100	1	Single tag		04.242.5053.0		
50	10	Marker strip		04.242.0850.0		
1		marked 1–12			04.007.4089.0	
1		marked 13–24			04.007.4189.0	
1		marked 25–36			04.007.4289.0	
1		marked 37–48			04.007.4389.0	
1		marked 49–60			04.007.4489.0	
1		marked 61–72			04.007.4589.0	
1		marked 73–84			04.007.4689.0	
1		marked 85–96			04.007.4789.0	
1		marked 97–108			04.007.4889.0	

Box Qty	G	T	Pole	Part Number	Part Number	Part Number	Part Number

Accessories crimp contacts

pitch 5.00 mm

IEC	250 V 4kV cat.3 400 V 4kV cat.2 1000 V 4kV cat.1	10 A 12 A	0.5 - 1.0 mm ² (Stranded) 1.5 - 2.5 mm ² (Stranded)
UL			
CSA			



Wire Strip Length	4.0 mm
Screw Size	M3

See Technical Data section for screw material options

Approvals:

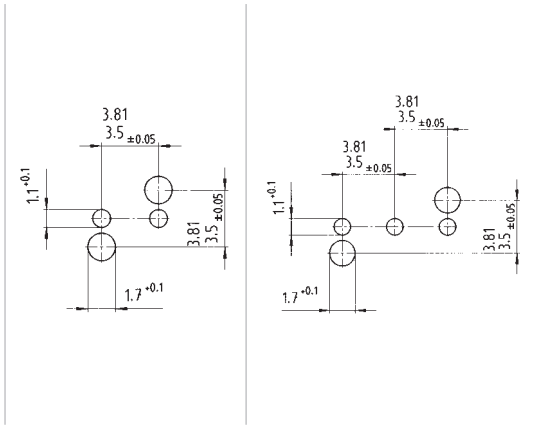
series 8113 BK pitch 5.00 mm				crimp contacts 0.5 - 1.0 mm ²	crimp contacts 1.5 - 2.5 mm ²		
Box Qty	Pole			Part Number	Part Number	Part Number	Part Number
500	500	Single contacts		02.125.1629.0	02.125.1729.0		
3500	3500	Strip		02.125.1600.0	02.125.1700.0		
1		Crimp tool		95.101.0800.0	95.101.0800.0		
1		Crimp die		05.502.2500.0	05.502.2500.0		

Box Qty	G	T	Pole	Part Number	Part Number	Part Number	Part Number

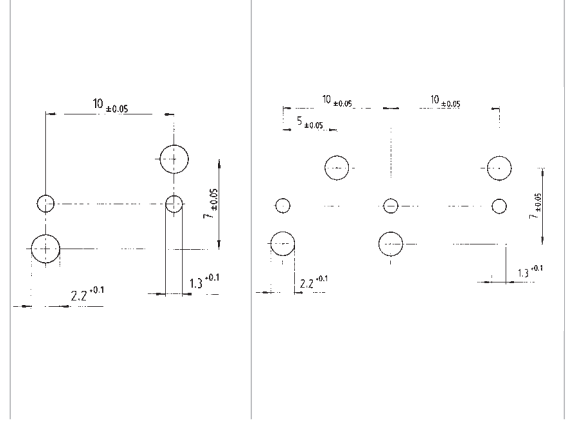
Technical Data

PCB Drill Holes

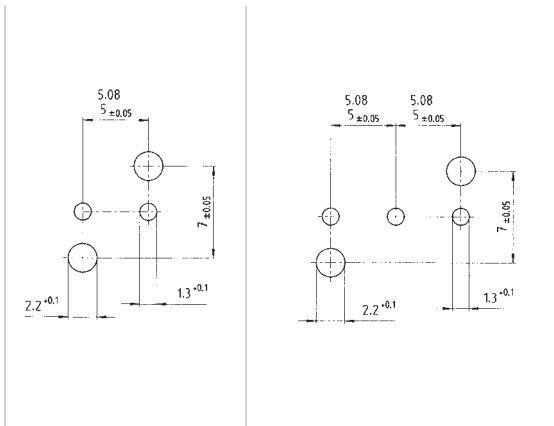
pitch 3.50 / 3.81 mm drilling plan
drawing includes optional locating cams



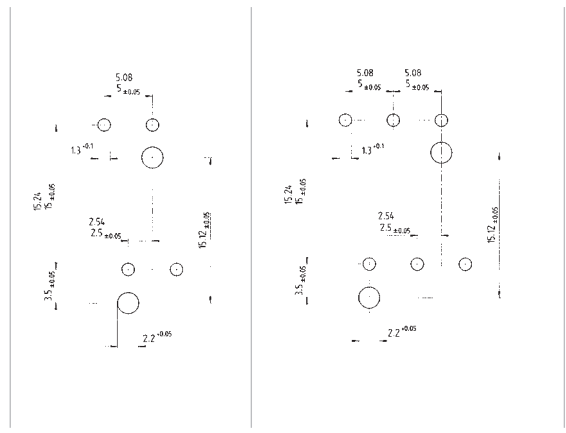
pitch 10.00 mm drilling plan
drawing includes optional locating cams



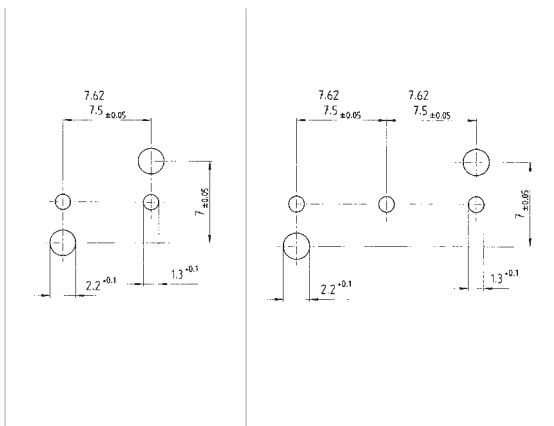
pitch 5.00 / 5.08 mm drilling plan
drawing includes optional locating cams



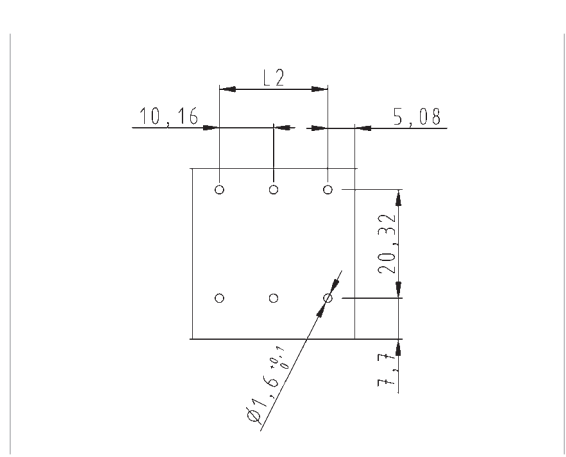
8291E drilling plan
drawing includes optional locating cams



pitch 7.50 / 7.62 mm drilling plan
drawing includes optional locating cams



7573 L2 drilling plan



Technical Data

Metal components

clamping part	nickel plated brass
clamping screw	nickel plated brass
clamping screw (optional)	galvanised and chromated steel
top version clamping screw	galvanised and chromated steel
socket contact	tinned bronze
header and solder pins	copper alloy
header contact for type 8142	tinned bronze
header contact for type 8543	tinned brass
wire protection	tinned bronze
Pin headers contact pin	M.S. tinned

Insulating housing

Polyamide 66/6, glass filled
 (no glass fill reinforcement in tier- type header or solderable parts)
 material in accordance with UL 94 V-0
 colour grey, similar to RAL 7032
 Pin headers: Polyamide 66/6, glass filled

Abbreviations for plastic material markings:

- PA 66/6 = Polyamide 66/6
- PC = Polycarbonate
- PBT = Polybutylenterephthalate

Clamping Screw

There are optional materials available for the clamping screw of the PCB connectors and terminals. To order a steel screw in place of a standard brass screw change the 8th digit of the part number from a 5 to a 0.

25.163.0253.0

- 5 = nickel plated brass screw
- 0 = galvanised and chromated steel screw

Technical Data

Torque of screw connection

Excerpt from EN 60 947-1

Column I: Applies to headless screws, that do not protrude from the threaded hole

Column II: Applies to nuts and screws that are tightened with a screwdriver

Column III: Applies to nuts and screws that can be tightened with tools other than a screwdriver

Thread diameter (mm) Metric standard values	Tightening torque (Nm) Column I	Tightening torque (Nm) Column II	Tightening torque (Nm) Column III
1.6	0.05	0.1	0.1
2.0	0.1	0.2	0.2
2.5	0.2	0.4	0.4
3.0	0.25	0.5	0.5
3.2	0.3	0.6	0.6
3.5	0.4	0.8	0.8
4	0.7	1.2	1.2
4.5	0.8	1.8	1.8
5	0.8	2.0	2.0
6	1.2	2.5	3.0
8	2.5	3.5	6.0
10		4.0	10.0
12			14.0
14			19.0
16			25.0
20			36.0
24			50.0

Electrical and thermal characteristics of plastic materials

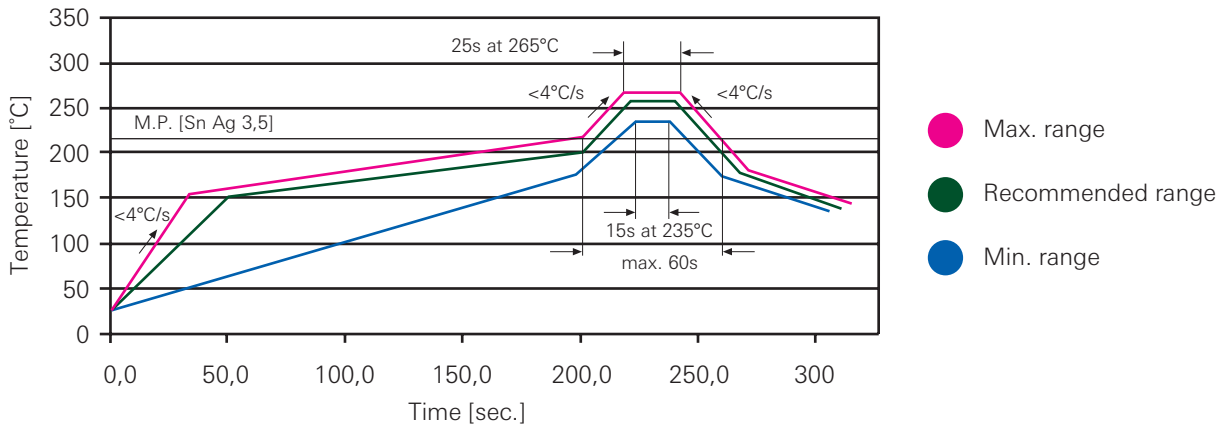
Abbreviations for plastic material markings:

PA = Polyamide

			PA 6	PA 6 GF	PA 66	PA 66 GF	PA 66/6	PA 66/6 GF
Dielectric strength	VDE 0303-T21	IEC 243/1	100 / 60 kV	40 / 31 kV	120 / 80 kV	80 / 65 kV	55 / 45 kV	26 / 23 kV
Dielectric loss @ 1 MHz	VDE 0303-T4	IEC 250	0.03 / 0.3	0.015 / -	0.025 / 0.2	0.02 / 0.1	0.02 / 0.3	0.016 / -
Feed through resistance	VDE 0303-T30	IEC 93	10 ¹² Ω	10 ¹¹ Ω	10 ¹² Ω	10 ¹² Ω	10 ¹² Ω	10 ¹⁵ Ω
Surface resistance	VDE 0303-T30	IEC 93	10 ¹⁰ Ω	10 ¹⁰ Ω	10 ¹⁰ Ω	10 ¹⁰ Ω	10 ¹⁰ Ω	10 ¹⁴ Ω
Creepage	VDE 0303-T1	IEC 112	600 CTI	550 CTI	600 CTI	550 CTI	600 CTI	325 CTI
Operating temperature	UL 746 B		130 °C	140 °C	125 °C	115 °C	120 °C	140 °C
Temperature index	VDE 0304 T21	IEC 216-1	100 / 80 °C	185 / 160 °C	118 / 101 °C	157 / 139 °C	123 / 107 °C	
Static lower temperature			-40 °C	-40 °C	-40 °C	-40 °C	-40 °C	-40 °C
Flammability	UL 94		V2 @ 1.5mm	V2 @ 0.8mm	V2 @ 0.4mm	V0 @ 0.8mm	V0 @ 0.4mm	V0 @ 1.5mm

Through Hole Reflow (THR)

Temperature Requirements



THR differs from the wave soldering procedure in two ways, i.e. in the lower maximum temperature of the component during the reflow process and in the length of the process which at 300 s, takes almost three times as long as wave soldering.

Conventionally used plastics such as PA 66 which is used almost everywhere cannot withstand this range.

These plastics blister during the soldering process („popcorn effect“).

This makes it necessary to use another plastic which can withstand the special requirements of reflow soldering.

THR Components

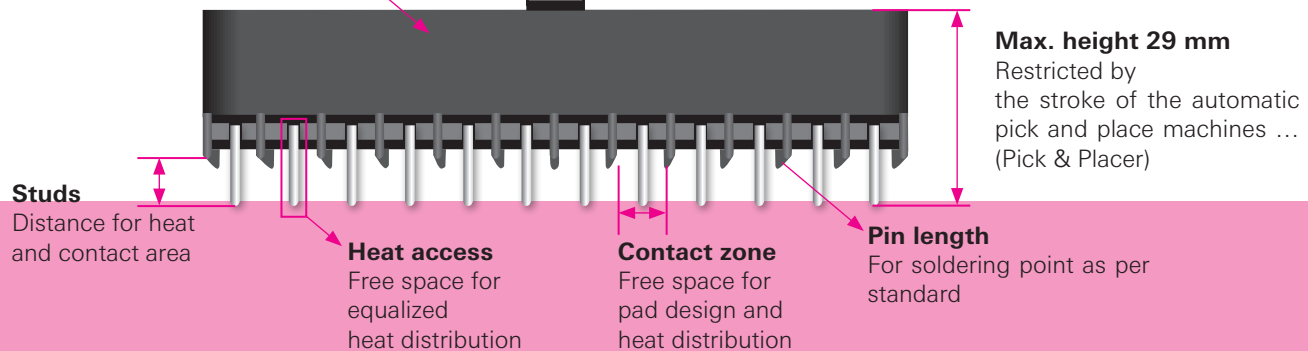
The primary demands on THR components are their ability to be automatically configured, the optimal heat distribution on the pin and the THR temperature profile.

Temperature resistant material

In accordance with THR requirement

Smooth surface or suction pad

for automatic configuration
(dark for optical contrast)



Technical Data THR Template Layout

The PC board layout must be adjusted to the reflow process in order to establish a high-quality soldering point. Two things must be observed in this connection regarding the PC board layout.

Drilled Hole Diameter

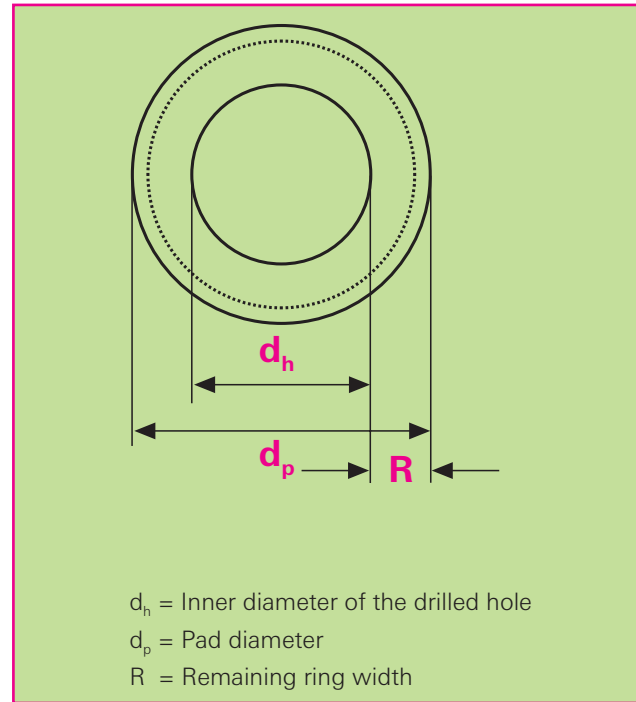
The drilled hole diameter must be selected to permit a good reflow of the solder from the pin back into the hole (i.e. by capillary action). It should also offer a size which can be automatically configured in accordance with the component tolerances.

Series	Spacing	Number of Poles	Pin Diagonals	d_h
8113 / 8213	5.0/ 5.08	≤ 8	1.2 mm	1.5 mm
8113 / 8213	5.0/ 5.08	≥ 8	1.2 mm	1.6 mm
8513 / 8813	3.5/ 3.81	≤ 5	1.0 mm	1.2 mm
8513 / 8813	3.5/ 3.81	≥ 5	1.0 mm	1.3 mm

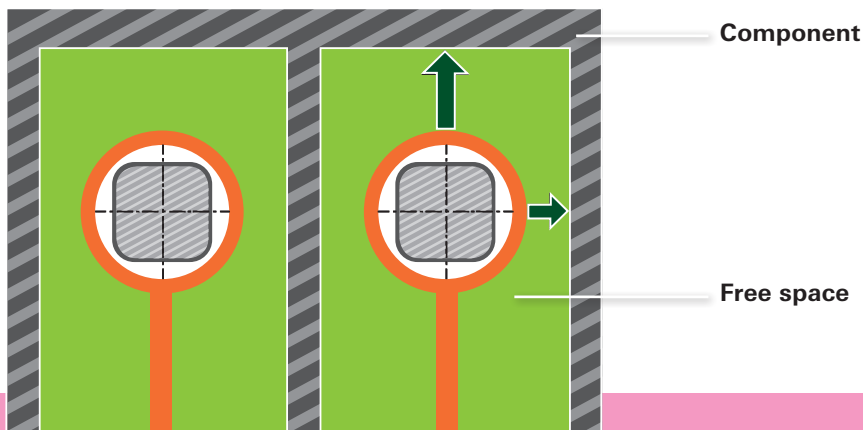
Remaining Ring and Pad Geometry

The soldering meniscus forms on the remaining ring. Since these should be easy to judge, we recommend the following values.

Series	Spacing	R	d_p
8113 / 8213	5.0/ 5.08	0.5 mm	2.5 mm
8513 / 8813	3.5/ 3.81	0.35 – 0.4 mm	2.0 mm



Where the soldering pads are of smaller design due to seepage and air gap distances, an additional solder depot can be created below the component by specified excess pressure. The space held free by the structure in the contact zone prevents the contact between paste and component.



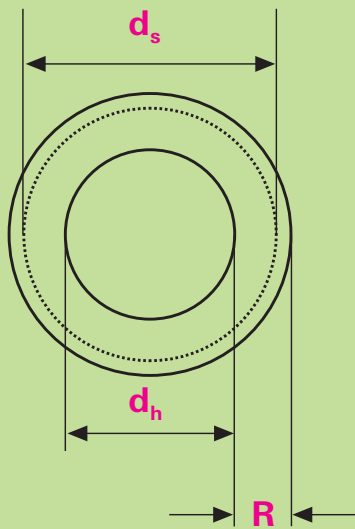
This is possible when increased demands on seepage and air gap distances place restrictions on the remaining ring widths. However, the parameters which can be executed must then be determined by trial and error. A remaining ring width of up to 0.2 mm is generally considered safe from a technical processing point of view.

If the application does not permit use of a continuous pin (1 = 2.6), short pins are also available (1 = 1.5). Double-sided configuration is possible with these pins.

Technical Data

THR Template Layout

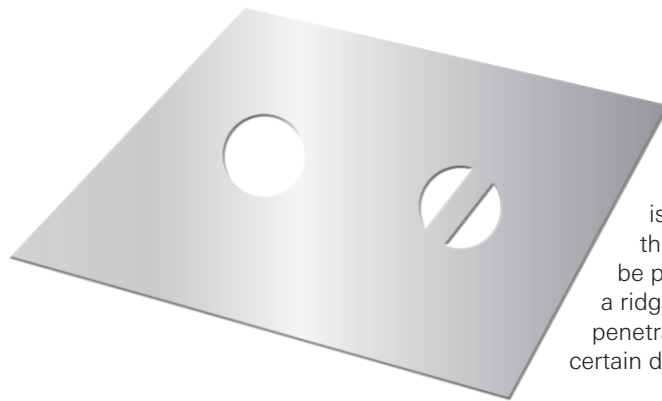
The template layout depends on the components used by the application. Depending on the application, simple templates as well as phase templates can be used. A template layout like the one shown below is always recommended.



d_s = Template of the hole diameter
 d_h = Inner diameter of the drilled hole
 R = Remaining ring width

$$d_s = d_h + 2R - 0.1$$

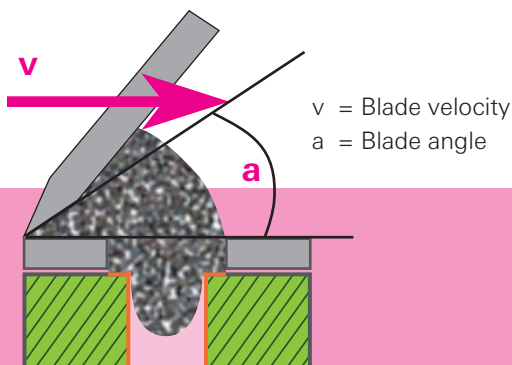
In case there is not enough solder, the template hole can be enlarged to ensure a specified amount of excess pressure.



In case there is too much solder, the templates can be provided with a ridge. This prevents penetration to a certain degree.

Application of the Soldering Paste

The challenge in achieving optimum soldering paste pressure lies in gauging the right amount of solder accurately. One standard value says that approx. 50% of the solder vaporizes during the soldering procedure (i.e., double the amount of solder must be used than is actually required). This can be influenced in different ways.



Multiple Spreading

The soldering paste is spread with a blade on the PC board. In cases where the whole amount cannot be applied in one step, the paste can be applied a second time in the same way.

Varying the Spreading Angle (a)

To achieve greater insertion pressure, a smaller spreading angle can be used.

Varying the Spreading Velocity (v)

Varying the spreading velocity changes the amount of time available to the soldering paste to flow into the hole. Reducing the spreading velocity allows more solder to flow into the hole while increasing the velocity allows less solder to flow into the hole.

Varying the Dot Mask Thickness

A phase template can be used to increase the dot mask thickness at the necessary location. Due to the resulting increase in volume, more solder can be deposited.

These adjustment mechanisms usually produce the desired results and, in combination, permit an efficient application of pressure.