



# MEDICAL

---

PC ATX

Adapter

Open Frame

Battery Backup

**POWER**  
NEVER ENDS

# About FSP

FSP, a leading power supply manufacturer established in 1993, dedicated in power industry. Strong RD resource is one of our advantages, 8 RD centers and more than 500 professional engineers providing high reliability, high efficiency designed products in order to meet various demands. Providing clean and high efficiency products is always one of our goals, all products from FSP are in compliance with worldwide latest safety and efficiency request.

**Headquarters :** Taiwan, Taoyuan

**Quality Certification :** ISO 9001, ISO 13485, ISO 14001, ISO 14064-1, OHSAS 18001, QC 080000, EICC

**Listed on Taiwan Stock Exchange in 2002**

**Global Service Locations :** 26 Sales offices/ 4 Manufacturers/ 8 R&D Centers

## PC ATX Specifications

Form	Watts	Dimension (mm)	Model No.	Maximum Load (A)									Safety Certificate	
				+3.3V	+5V	+12V1	+12V2	+12V3	+12V4	-12V	+5Vsb	-5V		
Flex	220	190*82*41	FSP220-60MPC	9	12	14					0.3	2.5	0.3	UL, TUV, CE
Flex	250	190*82*41	FSP250-60MPC	12	14	18					0.3	2.5	0.3	UL, TUV, CE
1U	300	190*100*41	FSP300-70MU	16	18	16	16	16			0.5	2.5	0.2	UL, VDE, CE
1U	350	190*100*41	FSP350-70MU	16	18	16	16	16			0.5	2.5	0.2	UL, VDE, CE
1U	400	220*100*41	FSP400M-80PA	18	18	16	16	16			0.5	3.0	0.2	UL, TUV, CE
1U	500	220*100*41	FSP500M-80PA	20	20	16	16	16			0.5	3.0	0.2	UL, TUV, CE
PS2	400	140*150*86	FSP400-70MPE	32	30	18	18				0.8	3.0	0.2	UL, TUV, CE
PS2	400	140*150*86	FSP400-70MPD	21	18	18	18				0.5	3.0	0.2	UL, TUV, CE
PS2	500	140*150*86	FSP500-80MPD	24	20	16	16	16			0.5	3.0	0.2	UL, TUV, CE
PS2	500	140*150*86	FSP500-70MPE	32	30	18	18				0.8	3.0	0.2	
PS2	600	165*150*86	FSP600-90MPB	24	24	16	16	16	16		0.5	3.5	0.2	UL, TUV, CE
PS2	700	165*150*86	FSP700-90MPB	24	30	16	16	16	16		0.5	3.5	0.2	UL, TUV, CE

**Notes:** + Input voltage AC 100~240V    + 50°C Operation Temperature    + Optional -5V output

## PSU with Battery Charger Specifications

Form	Watts	Dimension (mm)	Model No.	Maximum Load (A)							Charge Power	Battery Pack	
				+3.3V	+5V	+12V1	+12V2	+12V3	-12V	+5Vsb			
PS2 ATX	450	140*150*86	FSP450-60MUA	20	20	16	16			0.5	2	50W	24V Lead-Acid
PS2 ATX	550	140*150*86	FSP550-70MUA	20	20	16	16	16		0.5	3	50W	24V Lead-Acid

**Notes:** + Input voltage AC 100~240V    + 50°C Operation Temperature    + CB 60601-1 certificated

Form	Watts	Dimension (mm)	Model No.	Output Rating				Charge Power	Battery Pack
				V1	A1	V2	A2		
PCB	60	102*51*30	FSP060-U24-19	19	3.16			15W maxi.	14.4V Lithium-ion
PCB	60	102*51*30	FSP060-U24-24	24	2.50			15W maxi.	14.4V Lithium-ion
Box	400	198*102*40	FSP400M-U48-18C	18	22.12	+5Vaux	0.35	50W maxi.	14.4V Lithium-ion
Box	400	198*102*40	FSP400M-U48-24C	24	16.60	+5Vaux	0.35	50W maxi.	14.4V Lithium-ion

**Notes:** + Input voltage AC 100~240V    + 50°C Operation Temperature

# Adapter Specifications

Watts	Case Dimension (mm)	Model No.		Output Rating		Input Socket		Safety Certificate
		Class-I	Class-II	V	A	Class-I	Class-II	
25	76*40*40		FSP020M-DPM	5	4.0		Interchangeable	UL, TUV, CE
30	76*40*40		FSP030M-DHM	12	2.5		Interchangeable	UL, TUV, CE
30	76*40*40		FSP030M-DBM	19	1.57		Interchangeable	UL, TUV, CE
30	76*40*40		FSP030M-DAM	24	1.25		Interchangeable	UL, TUV, CE
25	118*50*32	FSP025-RAAM		5	5.0	C14		UL, TUV, CE
30	118*50*32	FSP030-RCAM		12	2.5	C14		UL, TUV, CE
30	118*50*32	FSP030-RDAM		15	2.0	C14		UL, TUV, CE
30	118*50*32	FSP030-REAM		18	1.66	C14		UL, TUV, CE
65	129*51*31		FSP065-DHCM1	12	5.42		C8	UL, TUV, CCC, CE
65	129*51*31		FSP065-DGCM1	15	4.33		C8	UL, TUV, CCC, CE
65	129*51*31		FSP065-DDCM1	18	3.62		C8	UL, TUV, CCC, CE
65	129*51*31		FSP065-DBCM1	19	3.43		C8	UL, TUV, CCC, CE
65	129*51*31		FSP065-DACM1	24	2.71		C8	UL, TUV, CCC, CE
65	129*59*32	FSP065M-DHA		12	5.42	C14		UL, TUV, CE
65	129*59*32	FSP065M-DGA		15	4.33	C14		UL, TUV, CE
65	129*59*32	FSP065M-DBA		19	3.43	C14		UL, TUV, CE
65	129*59*32	FSP065M-DAA		24	2.71	C14		UL, TUV, CE
90	140*71*22		FSP090-RHCM1	12	7.5		C8	UL, TUV, CE
90	140*71*22		FSP090-RDCM1	18	5.0		C8	UL, TUV, CE
90	140*71*22		FSP090-RBCM1	19	4.74		C8	UL, TUV, CE
90	140*71*22		FSP090-RACM1	24	3.75		C8	UL, TUV, CE
90	145*71*29	FSP090M-RHA		12	7.5	C14		UL, TUV, CE
90	145*71*29	FSP090M-RGA		15	6.0	C14		UL, TUV, CE
90	145*71*29	FSP090M-RBA		19	4.74	C14		UL, TUV, CE
90	145*71*29	FSP090M-RAA		24	3.75	C14		UL, TUV, CE
105	146*75*39	FSP105-KBAM1		18~19	5.84	C14		UL, TUV, CE
105	146*75*39	FSP105-KAAM1		24~25	4.38	C14		UL, TUV, CE
105	146*75*39	FSP105-KKAM1		28~29	3.75	C14		UL, TUV, CE
105	146*75*39	FSP105-KEAM1		36~38	2.92	C14		UL, TUV, CE
120	171*72*42	FSP135-KHAM1		12	10.0	C14		UL, TUV, CE
130	171*72*42	FSP135-KGAM1		14~16	9.3	C14		UL, TUV, CE
135	171*72*42	FSP135-KDAM1		18~19	7.5	C14		UL, TUV, CE
135	171*72*42	FSP135-KAAM1		24~25	5.6	C14		UL, TUV, CE
135	171*72*42	FSP135-KKAM1		28~29	4.8	C14		UL, TUV, CE
135	171*72*42	FSP135-KEAM1		36~38	3.8	C14		UL, TUV, CE
150	170*85*43	FSP150M-AHA		12	12.5	C14		UL, TUV, CE
150	170*85*43	FSP150M-AGA		15	10.0	C14		UL, TUV, CE
150	170*85*43	FSP150M-ABA		19	7.89	C14		UL, TUV, CE
150	170*85*43	FSP150M-AAA		24	6.25	C14		UL, TUV, CE
180	197*88*43	FSP180-AHAM1		12	15.0	C14		UL, TUV, CE
180	197*88*43	FSP180-ABAM1		19	9.47	C14		UL, TUV, CE
180	197*88*43	FSP180-AAAM1	FSP180-AACM1	24	7.5	C14	C8	UL, TUV, CE
180	197*88*43	FSP180-AKAM1		28	6.42	C14		UL, TUV, CE
200	197*88*43	FSP200-KBAM1	FSP200-KBCM1	19	10.53	C14	C8	UL, TUV, CE
220	197*88*43	FSP220-KAAM1	FSP220-KACM1	24	9.17	C14	C8	UL, TUV, CE
220	197*88*43	FSP220-KKAM1	FSP220-KKCM1	28	7.86	C14	C8	UL, TUV, CE
220	197*88*43	FSP220-KEAM1	FSP220-KECM1	36	6.11	C14	C8	UL, TUV, CE

Notes: + Input Voltage AC 100~240V

+ 40°C Operation Temperature

# Open Frame Specifications

Watts	Dimension (inch)	Model No.	Output Rating				Form Factor	Safety Certificate
			V <sub>1</sub>	A <sub>1</sub>	V <sub>2</sub>	A <sub>2</sub>		
30	2 * 3 * 1.12"	FSP030M-B23-05	5	6.00			PCB	TUV, CE
35	2 * 3 * 1.12"	FSP035M-B23-12	12	2.92			PCB	TUV, CE
35	2 * 3 * 1.12"	FSP035M-B23-15	15	2.34			PCB	TUV, CE
35	2 * 3 * 1.12"	FSP035M-B23-18	18	1.95			PCB	TUV, CE
35	2 * 3 * 1.12"	FSP035M-B23-24	24	1.46			PCB	TUV, CE
35	2 * 4 * 1.12"	FSP035M-B24-05	5	7.00			PCB	TUV, CE
45	2 * 4 * 1.12"	FSP045M-B24-12	12	3.75			PCB	TUV, CE
45	2 * 4 * 1.12"	FSP045M-B24-15	15	3.00			PCB	TUV, CE
45	2 * 4 * 1.12"	FSP045M-B24-18	18	2.50			PCB	TUV, CE
45	2 * 4 * 1.12"	FSP045M-B24-24	24	1.88			PCB	TUV, CE
55	2 * 4 * 1.09"	FSP060-1K00M1	5	11.00			PCB	UL, TUV, CE
60	2 * 4 * 1.09"	FSP060-1K20M1	12	5.00			PCB	UL, TUV, CE
64	2 * 4 * 1.09"	FSP060-1K30M1	15	4.30			PCB	UL, TUV, CE
64	2 * 4 * 1.09"	FSP060-1K40M1	24	2.70			PCB	UL, TUV, CE
55	2 * 4 * 1.09"	FSP060-2K30M1	5	8.00	12	3.00	PCB	UL, TUV, CE
55	2 * 4 * 1.09"	FSP060-2K50M1	5	8.00	24	1.50	PCB	UL, TUV, CE
100	2 * 4 * 1.16"	FSP100-1K00M1	5	20.00			PCB	UL, TUV, CE
100	2 * 4 * 1.16"	FSP100-1K20M1	12	8.34			PCB	UL, TUV, CE
100	2 * 4 * 1.16"	FSP100-1K31M1	18	5.56			PCB	UL, TUV, CE
100	2 * 4 * 1.16"	FSP100-1K40M1	24	4.20			PCB	UL, TUV, CE
100	2 * 4 * 1.16"	FSP100-1K50M1	28	3.58			PCB	UL, TUV, CE
100	2 * 4 * 1.16"	FSP100-1K70M1	36	2.78			PCB	UL, TUV, CE
150	2 * 4 * 1.29"	FSP150M-K24-12	12	12.50			PCB	UL, TUV, CE
150	2 * 4 * 1.29"	FSP150M-K24-18	18	8.34			PCB	UL, TUV, CE
150	2 * 4 * 1.29"	FSP150M-K24-24	24	6.30			PCB	UL, TUV, CE
150	2 * 4 * 1.29"	FSP150M-K24-30	30	5.00			PCB	UL, TUV, CE
150	2 * 4 * 1.29"	FSP150M-K24-36	36	4.17			PCB	UL, TUV, CE
200	3 * 5 * 1.5"	FSP202-1K20M1	12	16.67			U-Bracket	UL, TUV, CE
200	3 * 5 * 1.5"	FSP202-1K31M1	18	11.12			U-Bracket	UL, TUV, CE
200	3 * 5 * 1.5"	FSP202-1K40M1	24	8.34			U-Bracket	UL, TUV, CE
200	3 * 5 * 1.5"	FSP202-1K50M1	28	7.15			U-Bracket	UL, TUV, CE
200	3 * 5 * 1.5"	FSP202-1K70M1	36	5.56			U-Bracket	UL, TUV, CE
300	3 * 6 * 1.28"	FSP300M-K36-12A	12	25.00	+5Vaux	2.0	PCB	UL, TUV, CE
300	3 * 6 * 1.28"	FSP300M-K36-19A	19	15.80	+5Vaux	2.0	PCB	UL, TUV, CE
300	3 * 6 * 1.28"	FSP300M-K36-24A	24	12.50	+5Vaux	2.0	PCB	UL, TUV, CE
300	3 * 6 * 1.28"	FSP300M-K36-30A	30	10.00	+5Vaux	2.0	PCB	UL, TUV, CE
300	3 * 6 * 1.28"	FSP300M-K36-36A	36	8.34	+5Vaux	2.0	PCB	UL, TUV, CE
400	4 * 7 * 1.58"	FSP400-1K20M1	12	33.34	+5Vaux	0.1	U-Bracket	UL, TUV, CE
400	4 * 7 * 1.58"	FSP400-1K31M1	18	22.23	+5Vaux	0.1	U-Bracket	UL, TUV, CE
400	4 * 7 * 1.58"	FSP400-1K40M1	24	16.67	+5Vaux	0.1	U-Bracket	UL, TUV, CE
400	4 * 7 * 1.58"	FSP400-1K50M1	28	14.29	+5Vaux	0.1	U-Bracket	UL, TUV, CE
400	4 * 7 * 1.58"	FSP400-1K70M1	36	11.12	+5Vaux	0.1	U-Bracket	UL, TUV, CE
450	4 * 7 * 1.7"	FSP500-K47-12B	12	37.50	+5Vaux	0.5	U-Bracket	UL, TUV, CE
500	4 * 7 * 1.7"	FSP500-K47-18B	18	27.78	+5Vaux	0.5	U-Bracket	UL, TUV, CE
500	4 * 7 * 1.7"	FSP500-K47-24B	24	20.84	+5Vaux	0.5	U-Bracket	UL, TUV, CE
500	4 * 7 * 1.7"	FSP500-K47-28B	28	17.86	+5Vaux	0.5	U-Bracket	UL, TUV, CE
500	4 * 7 * 1.7"	FSP500-K47-36B	36	13.89	+5Vaux	0.5	U-Bracket	UL, TUV, CE
600	4 * 8 * 2.5"	FSP650M-K48-12C	12	50.00	+5Vaux	0.2	Box	UL, TUV, CE
650	4 * 8 * 2.5"	FSP650M-K48-18C	18	36.12	+5Vaux	0.2	Box	UL, TUV, CE
650	4 * 8 * 2.5"	FSP650M-K48-24C	24	27.09	+5Vaux	0.2	Box	UL, TUV, CE
650	4 * 8 * 2.5"	FSP650M-K48-28C	28	23.22	+5Vaux	0.2	Box	UL, TUV, CE
650	4 * 8 * 2.5"	FSP650M-K48-36C	36	18.06	+5Vaux	0.2	Box	UL, TUV, CE

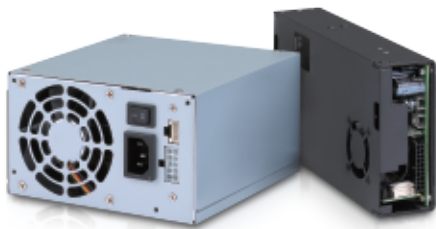
Notes: + Input Voltage AC 100–240V +50°C Operation Temperature

# Product Advantages



## PC ATX

- IEC 60601-1, EN 60601-1, ANSI/AAMI ES 60601-1 approval
  - Comply with Medical IEC 60601-1-2 EMC standard
  - Comply with Intel ATX 12V design guide
  - Output power from 220W to 700W
- 



## PSU with Battery Charger

- IEC 60601-1, EN 60601-1, ANSI/AAMI ES 60601-1 safety standard
  - Comply with ITE IEC 60950-1 standard
  - Comply with Medical IEC 60601-1-2 EMC standard
  - Non-stop battery charger features
  - USB 2.0 compatible communication interface with host computer
  - SMBus interface with battery pack
- 



## Adapter

- IEC 60601-1, EN 60601-1, ANSI/AAMI ES 60601-1 approval
  - Comply with Medical IEC 60601-1-2 EMC standard
  - Comprehensive product line and option of various output voltage
  - High efficiency comply with DOE efficiency Level V and Level VI
  - Low power consumption for no load condition
  - Output power from 15W to 220W
- 



## Open Frame

- IEC 60601-1, EN 60601-1, ANSI/AAMI ES 60601-1 approval
  - Comply with Medical IEC 60601-1-2 EMC standard
  - Comprehensive product line and option of various output voltage
  - Output power from 30W to 1100W
-



# GLOBAL OFFICE INFORMATION

## FSP TECHNOLOGY INC. (Headquarters)

NO.22, Jianguo E. Rd., Taoyuan Dist., Taoyuan City 330, Taiwan

TEL : +886-3-375-9888 / FAX : +886-3-375-6966 sales@fsp-group.com.tw / www.fsp-group.com

## Asia

### Kaohsiung Office

2-3, East 3rd Street N.E.P.Z. P.O. Box 35-25,  
Kaohsiung, Taiwan  
TEL : +886-7-362-5611 / FAX : +886-7-363-4166

### India Office

228, Ground Floor, Rainbow residency, Sarjapur Road,  
Bangalore-560035, India  
TEL : +91-80-420-362-80

### Japan Office

1003 Authentic Higashi Senba BLDG, 1-2-1, Kitakyuhouji-machi,  
Chuo-ku, Osaka City, Osaka Pref. 541-0057, Japan  
TEL : +81-6-6210-2237

### Korea Office

#709, Daewoo The-Oville Prime, 1337-22, Seocho-Dong,  
Seocho-Gu, Seoul, Korea (137-860)  
TEL : +82-2-572-6680 / FAX : +82-2-525-1488

## Europe

### Germany Office

Fortron/Source (Europa) GmbH  
Carl-Friedrich-Benz-Strasse 13, D-47877 Willich, Germany  
TEL : +49-2154-894-012-0 / FAX : +49-2154-894-012-20

### Germany Office

Fortron/Source (Europa) GmbH  
Josef-Schorer-Str. 10, D-86179 Augsburg, Germany  
TEL : +49-821-809988-0 / FAX : +49-821-809988-30

### Germany Office

FSP Power Solution GmbH  
Jakobshöhe 16, D-41066 Mönchengladbach, Germany  
TEL : +49-2161-495249-0 / FAX : +49-2161-495249-21

### Nordic Office

FSP NORDIC AB  
PO BOX 16183, 103 24 Stockholm, Sweden  
TEL : +46(0)8-868-264 / FAX : +46(0)8-555-36122

### France Office

FSP Group France  
Bat 123 BP625 Zone Juliette 94392 Orly Aerogare, Cedex France  
TEL : +33(0)17003-6064

### U.K. Office

FSP (GB) LTD.  
Unit 8, Curo Park, Frogmore, St. Albans, Hertfordshire,  
AL2 2DD, United Kingdom  
TEL : +44-1727-873-888 / FAX : +44-1727-873-668

## United States

### Southern California Office

FSP GROUP USA CORP.  
14284 Albers Way, Chino, CA 91710 U.S.A.  
TEL : +1-909-606-0960 / FAX : +1-909-606-0014

### North America Office

FSP North America, Inc.  
33 Musick, Irvine, CA 92618, U.S.A.  
TEL : +1-949-305-6703 / FAX : +1-949-305-6701

### Northern California Office

Sparkle Power Inc.  
48502 Kato Road, Fremont, CA 94538, U.S.A.  
TEL : +1-408-519-8888 / FAX : +1-408-519-9999

### Southern California Office

Sparkle Power Inc.  
17071 Green Drive City of Industry, CA 91745, U.S.A.  
TEL : +1-626-839-7180 / FAX : +1-626-839-3395

### Southern California Office

FSP PowerTek Inc.  
22522 Avenida Empresa Rancho Santa Margarita,  
CA 92688, U.S.A.  
TEL : +1-949-229-0088 / FAX : +1-949-888-8377

### Northern California Office

FSP PowerTek Inc.  
4231 Business Center Dr. Ste #7 Fremont, CA 94538, U.S.A.  
TEL : +1-510-400-8268 / FAX : +1-510-440-0928

### Silicon Valley Office

FSP International Sources  
3350 Scott Blvd., Building 13-B, Santa Clara, CA 95054, U.S.A.  
TEL : +1-408-988-6615 / FAX : +1-408-988-6622

### Southern California Office

FSP Technology USA, Inc.  
8831 Research Drive, Suite 200, Irvine, CA 92618, U.S.A.  
TEL : +1-949-877-3699

## China

### Shanghai Office

YULI ELECTRONIC CO., LTD.  
17F, No.461 Hongcao Rd., Caohejing Software Building,  
Shanghai, China  
上海宇力电子有限公司  
上海市虹漕路461号漕河泾软件大厦17F  
TEL : +86-21-5426-2808 / FAX : +86-21-5426-2818

### Wuxi Office

WUXI ZHONGHAN TECHNOLOGY CO., LTD  
No.3, Xijin Rd., New District, Wuxi City, Jiangsu Province, China  
无锡仲汉科技有限公司  
214028 江苏省无锡市新吴区锡锦路3号  
TEL : +86-510-8532-3336 / FAX : +86-510-8532-3802

### Shenzhen Office

SHENZHEN ZHONG HAN SCIENCE & TECH.CO.LTD.  
Room L-R, 19/F, Building A, Fortune Plaza, 7060 Shen Nan Rd.,  
Shenzhen, Guangdong, China  
深圳市众汉科技有限公司  
广东省深圳市福田区深南大道7060号财富广场A座19楼L-R室  
TEL : +86-755-8293-3191 / FAX : +86-755-8293-3190

### Shenzhen Office

SHENZHEN RISESUN INDUSTRIAL CO., LTD.  
Room S-Z, 19/F, Building A, Fortune Plaza, 7002 Shen Nan Rd.,  
Shenzhen, Guangdong, China  
深圳市永盛宏实业有限公司  
广东省深圳市福田区深南大道7002号财富广场A座19楼S-Z室  
TEL : +86-755-8287-9118 / FAX : +86-755-8287-9105

## South America

### Brazil Office

FSP BRASIL INTERMEDIACAO DE NEGOCIOS LTDA.  
Rua Cotoxo 472 Apt112, - Villa Pompeia - São Paulo-Brasil- CEP  
05021-000  
TEL : +55-11-9961-36381

## Middle East

### Turkey Office

FSP Turkey Diş Tic. Ltd. Şti.  
Merkez Mah. Ladin Sok. Terziler Sitesi K:6 No: 20/619-620  
34197 Yenibosna/Bahçelievler-Istanbul - TURKEY  
TEL : +90-212-232-48-68