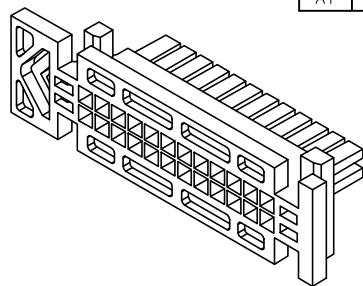
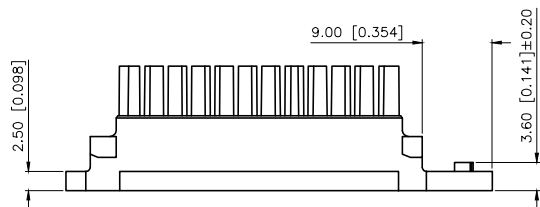


REVISIONS					
REV.	ECN NO.	LOCATION	DESCRIPTION	DATE	DESIGN
A0	N/A		INITIAL RELEASE	/	/
A1	N/A		图面升级整理图面	2024.07.26	阿树

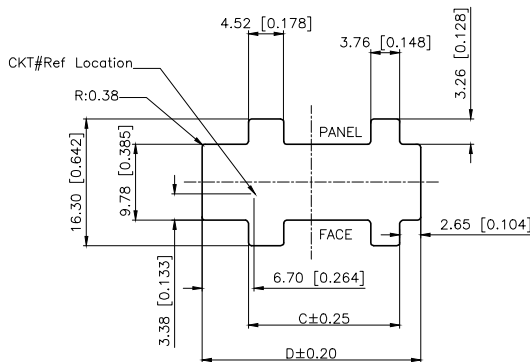
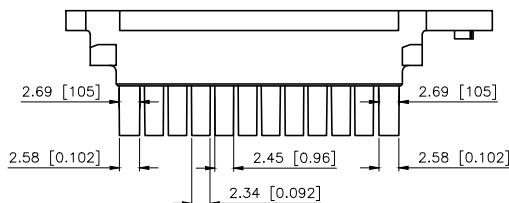
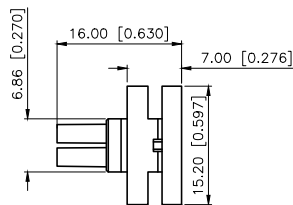
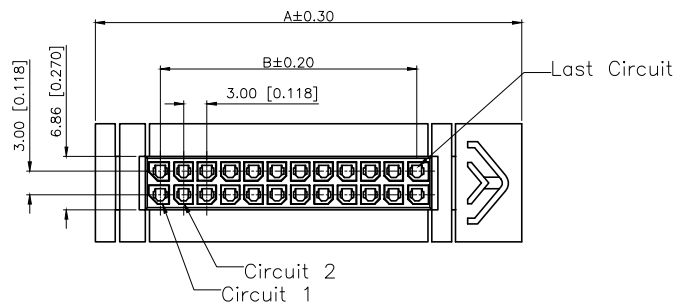


Specifications:
Voltage rating:250V AC/DC
额定电压: 250V AC/DC
Current rating:5A AC/DC
额定电流:5A AC/DC
Withstanding voltage:1000V AC/minute
耐受电压:1000V AC/分钟
Temperature range:-45℃~+125 ℃
温度范围:-45℃~+125 ℃
Insulation resistance:≥1000MΩ
绝缘电阻:≥1000MΩ
Contact resistance:≤10mΩ
接触电阻:≤10mΩ

PART NO.:

X3025 H M -2xXX WS -N0
① ② ③ ④ ⑤ ⑥

- ①Series No
- ②Category:H-HSG
- ③Category:M-Male Housing
- ④Row No.Pin No:2xXX-2x02P~2x12P
- ⑤Special No:WS-With Base
- ⑥Material:N0-PA66 UL94V-0



Recommended Panel Cut - Out
Thick:1.27mm Min/1.57mm Max

Poles	Dimensions(mm)				Poles	Dimensions(mm)			
	A	B	C	D		A	B	C	D
2x01	/	/	/	/	2x07	39.80	18.00	28.46	37.10
2x02	24.60	3.00	13.46	22.10	2x08	42.80	21.00	31.46	40.10
2x03	27.60	6.00	16.46	25.10	2x09	45.80	24.00	34.46	43.10
2x04	30.60	9.00	19.46	28.10	2x10	48.80	27.00	37.46	46.10
2x05	33.60	12.00	22.46	31.10	2x11	51.80	30.00	40.46	49.10
2x06	36.60	15.00	25.46	34.10	2x12	54.80	33.00	43.46	52.10

X3025HM-2xXXWS-N0	PA66	X3025W	X3025TF
PART NO	Material	Suitable XKB Wafer	Suitable XKB Terminal

AuGLAR	±5°
X.	±0.40
X.x	±0.30
X.xx	±0.20
X.xxx	±0.15
UNSPECIFIED TOLERANCES	



DESIGN	阿树	VIEW:		MODEL TYPE:	3.00 mm Crimp Style Connectors
CHECKED		UNIT:	mm/in	PART NO.:	X3025HM-2xXXWS-N0
APPROVED		SIZE:	A4	DWG NO.:	