



Alcoswitch | Alcoswitch LPT

TE Internal #: 2337238-4

Round Actuator Style, NO, Stainless Steel, Silver, Low Profile, 50mA

Contact Current Rating, Alcoswitch LPT, Tactile Switches

[View on TE.com >](#)

Switches > Tactile Switches



Actuator Style: **Round**

Operating Function: **NO**

Contact Base Material: **Stainless Steel**

Switch Contact Plating Material: **Silver**

Low Profile: **Yes**

Features

Product Type Features

Switch Connection Type	Printed Circuit Board
Leg Style	Gull Wing
Illuminated	Without
Actuator Style	Round

Configuration Features

ESD Grounding Terminal	With
Ganged	Without
Switch Feedback Type	Tactile
Operating Function	NO
Configuration (Pole-Throw)	Single Pole - Single Throw
Number of Actuators	Single

Electrical Characteristics

Operating Voltage	12 VDC
-------------------	--------

Body Features

--	--



Cover Material	Nickel, Silver
Actuator Force	260 g[9.17 oz]
Case Material	Thermoplastic
Actuator Profile	Extended
Actuator Material	Thermoplastic
Case Color	Black
Product Orientation	Vertical
Actuator Color	White

Contact Features

Contact Base Material	Stainless Steel
Switch Contact Plating Material	Silver
Contact Current Rating	50 mA

Termination Features

Termination Method to PCB	Surface Mount
---------------------------	---------------

Housing Features

Low Profile	Yes
Process Sealed	No

Dimensions

Product Height	2 mm[.079 in]
----------------	---------------

Usage Conditions

Operating Temperature Range	-25 – 70 °C
-----------------------------	-------------

Packaging Features

Packaging Method	Tape & Reel
------------------	-------------

Product Compliance

[For compliance documentation, visit the product page on TE.com>](#)

EU RoHS Directive 2011/65/EU	Compliant
EU ELV Directive 2000/53/EC	Compliant
China RoHS 2 Directive MIIT Order No 32, 2016	No Restricted Materials Above Threshold
EU REACH Regulation (EC) No. 1907/2006	Current ECHA Candidate List: JUNE 2024 (241) Candidate List Declared Against: JAN 2024 (240)

Does not contain REACH SVHC

Halogen Content

Low Halogen - Br, Cl, F, I < 900 ppm per homogenous material. Also BFR/CFR/PVC Free

Solder Process Capability

Not reviewed for solder process capability

Product Compliance Disclaimer

This information is provided based on reasonable inquiry of our suppliers and represents our current actual knowledge based on the information they provided. This information is subject to change. The part numbers that TE has identified as EU RoHS compliant have a maximum concentration of 0.1% by weight in homogenous materials for lead, hexavalent chromium, mercury, PBB, PBDE, DBP, BBP, DEHP, DIBP, and 0.01% for cadmium, or qualify for an exemption to these limits as defined in the Annexes of Directive 2011/65/EU (RoHS2). Finished electrical and electronic equipment products will be CE marked as required by Directive 2011/65/EU. Components may not be CE marked. Additionally, the part numbers that TE has identified as EU ELV compliant have a maximum concentration of 0.1% by weight in homogenous materials for lead, hexavalent chromium, and mercury, and 0.01% for cadmium, or qualify for an exemption to these limits as defined in the Annexes of Directive 2000/53/EC (ELV). Regarding the REACH Regulation, the information TE provides on SVHC in articles for this part number is based on the latest European Chemicals Agency (ECHA) 'Guidance on requirements for substances in articles' posted at this URL: <https://echa.europa.eu/guidance-documents/guidance-on-reach>

Compatible Parts



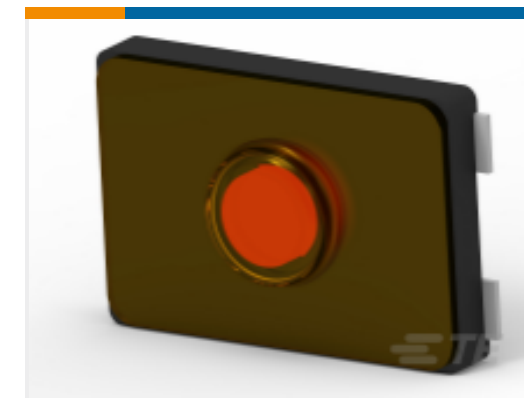
TE Part # 2337234-1
TACT MICRO JB 4.6X4.4X0.55 P3.5
100GF



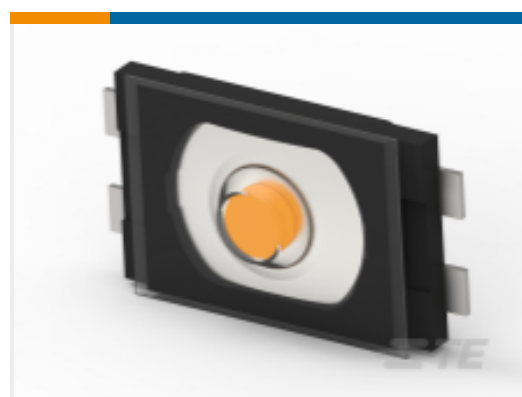
TE Part # 2337234-2
TACT MICRO JB 4.6X4.4X0.55 P3.5
160GF



TE Part # 2337234-3
TACT MICRO JB 4.6X4.4X0.55 P3.5
200GF



TE Part # 2337225-1
TACT ULTRA TB 2.8X1.9X0.6 160GF



TE Part # 2337224-1
TACT ULTRA TB 2.6X1.6X0.55 160GF

Also in the Series | [Alcoswitch LPT](#)

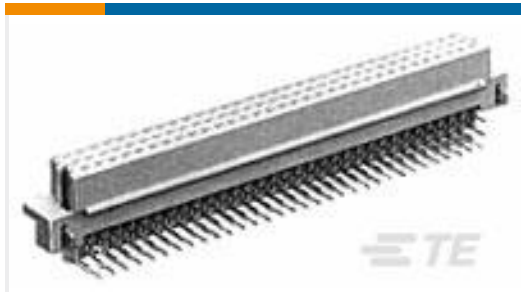


Tactile Switches(52)

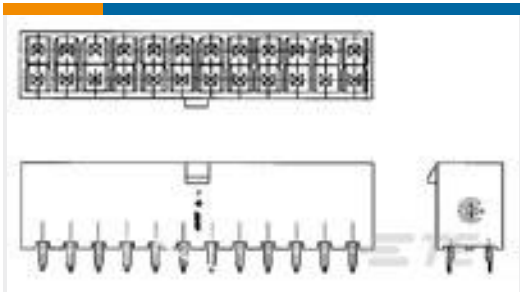
Customers Also Bought



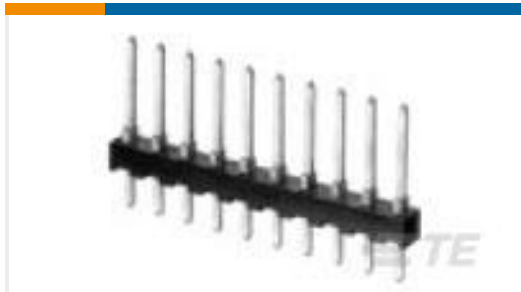
TE Part #4-1462037-6
IM06JR=IM RELAY 140mW 12V



TE Part #5650874-5
ASSY,RECEPTACLE,EUROCARD,TYPE



TE Part #1-1586037-2
12P VERT HDR VAL-U-LOK V2



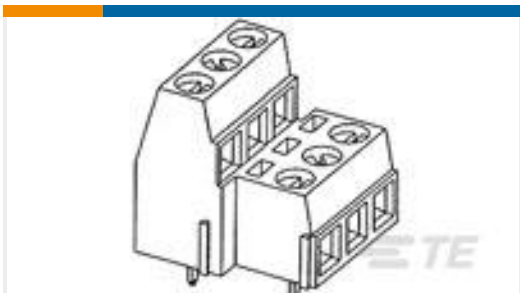
TE Part #87224-2
02 MODII HDR SRST UNSHRD .100



TE Part #216550-1
8/8 PCB MOD.JACK TE



TE Part #1625854-3
0603 PROBE PAD



TE Part #796692-2
TERMI-BLOK PCB MOUNT 1&2 2P.5



TE Part #1775862-2
mSATA/mini PCI-E 5.2H Type I G/F



TE Part #2-165008-1
P.G. SPADE



TE Part #ANT-GNSSCP-SM12L1
Antenna GNSS L1 12x12 SMT

Documents

Product Drawings

[TACT MINI GW 5.2X5.2X2 260GF](#)

English

CAD Files

[Customer View Model](#)

[ENG_CVM_CVM_2337238-4_B.3d_igs.zip](#)

English

[Customer View Model](#)



[ENG_CVM_CVM_2337238-4_B.3d_stp.zip](#)

English

Customer View Model

[ENG_CVM_CVM_2337238-4_B.2d_dxf.zip](#)

English

3D PDF

3D

By downloading the CAD file I accept and agree to the [Terms and Conditions](#) of use.

Datasheets & Catalog Pages

[MSLPT Family-Low-profile Tactile Switches](#)

English