

DO NOT SCALE FROM THIS PRINT

TABLE 1	
LEAD STYLE	BOARD SPACE WHEN MATED WITH TOLC
-02	.250 [6.35]

SOLC-1XX-XX-XXX-Q-XX-X-XX

NO OF POSITIONS  
-05, -10, -15, -20, -25  
-30, -35, -40, -45, -50  
(PER ROW)

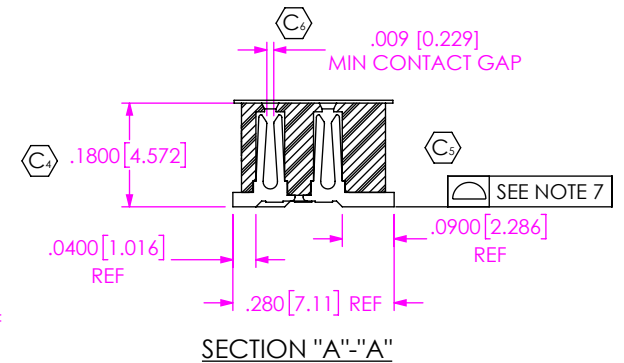
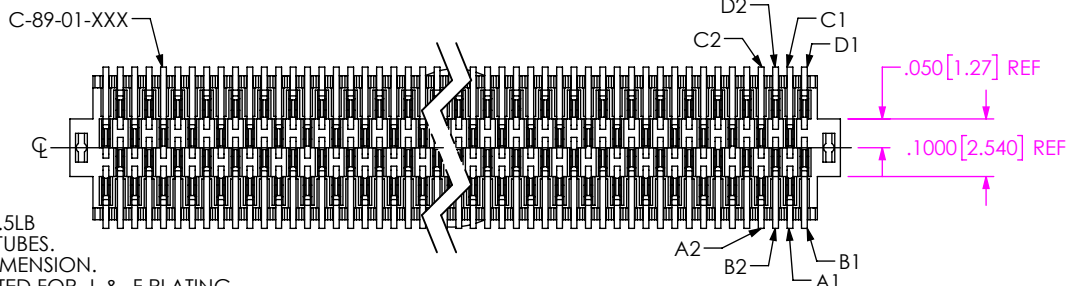
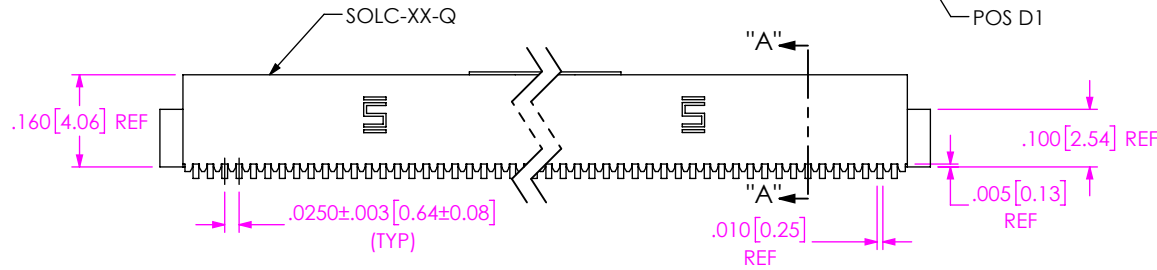
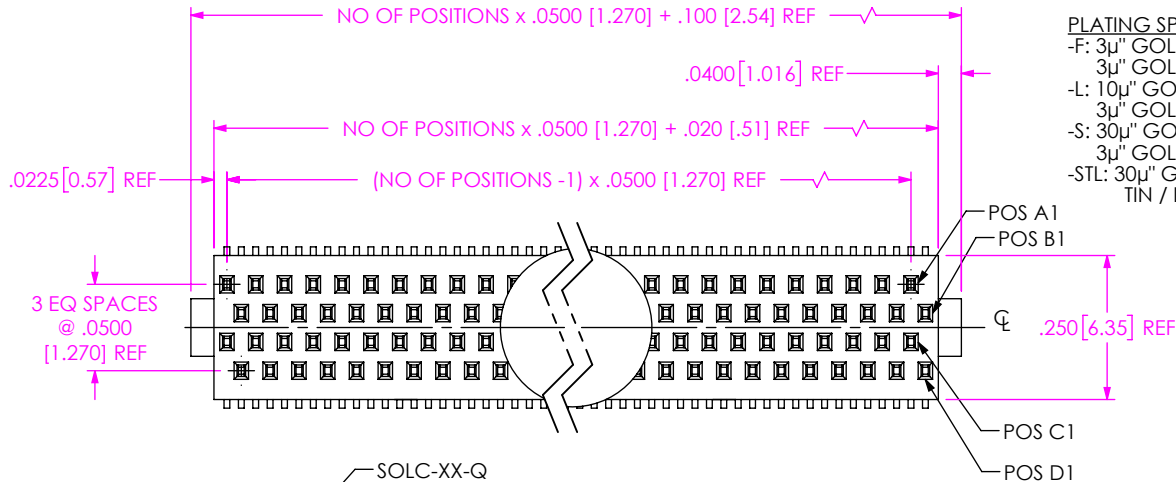
LEAD STYLE  
-02: (USE C-89-01-XXX)

PACKAGING  
BLANK: TUBES (SEE NOTE 2)  
-TR: TAPE & REEL  
(SEE NOTE 8 & 9)  
-FR: FULL REEL QTY  
TAPE & REEL  
(SEE NOTE 8 & 9)

PICK & PLACE OPTION  
-P: PICK & PLACE PAD  
(USE MPP-07, SEE FIG 4, SHT 2)  
-K: POLYIMIDE FILM PAD  
(SEE FIG 5, SHT 2)  
(USE K-DOT-.276-.375-.005)

OPTIONS  
-LC: LOCKING CLIP (SEE FIG 2,  
SHT 2) (SEE NOTE 5)  
NOT AVAILABLE WITH -A  
-A: ALIGNMENT PINS (SEE FIG 3,  
SHT 2)  
(USE SOLC-XX-Q-A)  
(NOT AVAILABLE WITH -LC)

ROW SPEC  
-Q: QUAD  
(USE SOLC-XX-Q)



NOTES:

1. MINIMUM PUSHOUT FORCE: .5LB
2. PARTS TO BE PACKAGED IN TUBES.
3. Ⓢ INDICATES A CRITICAL DIMENSION.
4. -S PLATING CAN BE SUBSTITUTED FOR -L & -F PLATING.
5. DUE TO THE HIGH AMOUNT OF INSERTION FORCE NEEDED, THE -LC OPTION IS NOT COMPATIBLE WITH AUTO PLACEMENT. SAMTEC RECOMMENDS MANUAL PLACEMENT FOR ALL ASSEMBLIES WITH THE -LC OPTION.
6. INSULATOR MATERIAL: LCP, UL 94 V0
7. COPLANARITY:  
-05 THRU -30 POSITION: .0040 [.102]  
-35 THRU -50 POSITION: .0060 [.152]
8. ORDERS WILL BE PACKAGED ACCORDING TO THE SAMTEC PACKAGING EFFICIENCY STANDARDS (SPES) FOUND ON WWW.SAMTEC.COM
9. ATTACH LABEL TO EACH REEL

FIG 1

UNLESS OTHERWISE SPECIFIED, DIMENSIONS ARE IN INCHES.

TOLERANCES ARE:

DECIMALS ANGLES  
.XX: ±.01 [.3] 5°  
.XXX: ±.005 [.13]  
.XXXX: ±.0020 [.051]

PROPRIETARY NOTE

THIS DOCUMENT CONTAINS CONFIDENTIAL AND PROPRIETARY INFORMATION AND ALL DESIGN, MANUFACTURING, REPRODUCTION, USE, PATENT RIGHTS AND SALES RIGHTS ARE EXPRESSLY RESERVED BY SAMTEC, INC. THIS DOCUMENT SHALL NOT BE DISCLOSED, IN WHOLE OR PART, TO ANY UNAUTHORIZED PERSON OR ENTITY NOR REPRODUCED, TRANSFERRED OR INCORPORATED IN ANY OTHER PROJECT IN ANY MANNER WITHOUT THE EXPRESS WRITTEN CONSENT OF SAMTEC, INC.



520 PARK EAST BLVD, NEW ALBANY, IN 47150  
PHONE: 812-944-6733 FAX: 812-948-5047  
e-Mail: info@SAMTEC.com code 53322

MATERIAL:  
INSULATOR: VECTRA E130I, COLOR: BLACK  
CONTACT: PHOS BRONZE

MAX FLASH ALLOWED: .002 [0.05]  
MAX GATE VESTIGE: .002 [0.05]

F:\DWG\MISC\MKTG\SOLC-1XX-XX-XXX-Q-XX-X-XX-MKT.SLDDRW

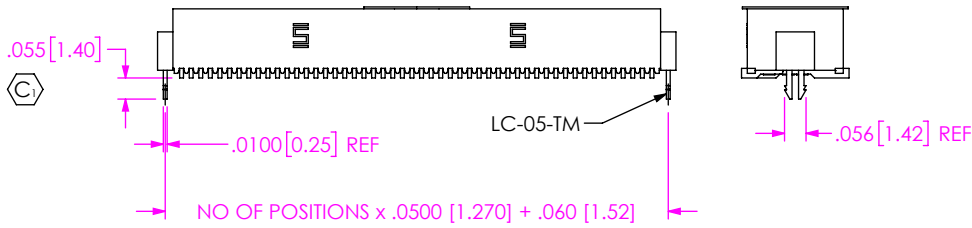
DO NOT SCALE DRAWING SHEET SCALE: 3:1

DESCRIPTION:  
QUAD ROW STAGGERED SMT SOCKET ASM

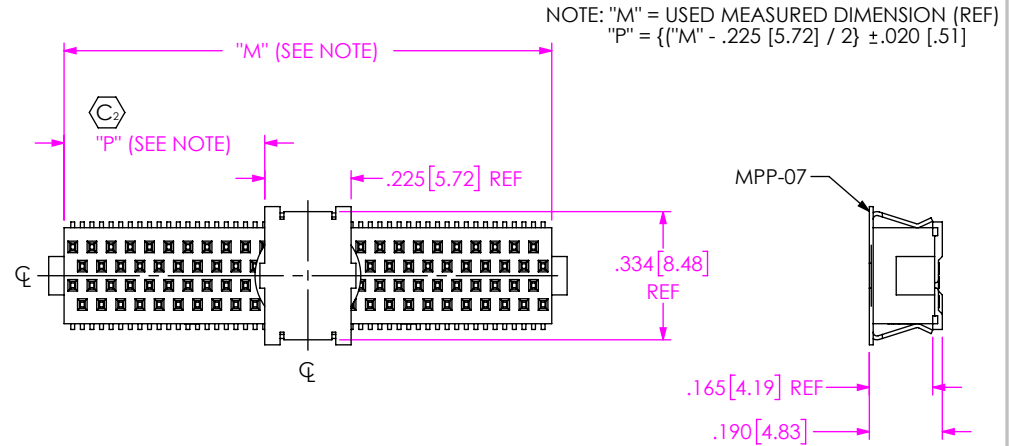
DWG. NO.  
SOLC-1XX-XX-XXX-Q-XX-X-XX

BY: TIM P. 2/11/2013 SHEET 1 OF 2

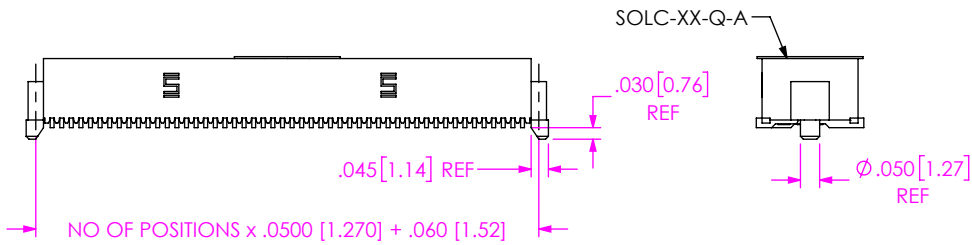
**FIG 2**  
-LC OPTION  
(DIFFERENT AS SHOWN, OTHER WISE SAME AS FIG 1)



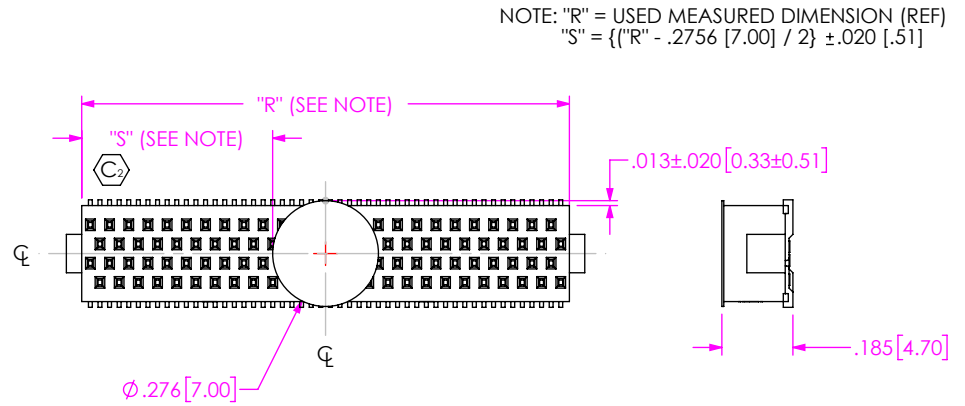
**FIG 4**  
-P OPTION  
(DIFFERENT AS SHOWN, OTHER WISE SAME AS FIG 1)



**FIG 3**  
-A MOLDED  
(DIFFERENT AS SHOWN, OTHER WISE SAME AS FIG 1)

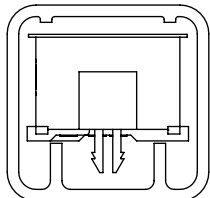


**FIG 5**  
-P POLYIMIDE FILM PAD  
(DIFFERENT AS SHOWN, OTHER WISE SAME AS FIG 1)

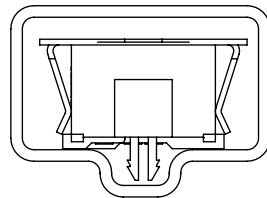


**PACKAGING VIEW**

TABLE		
NO OPTION, -LC, -A, -K, -K-LC, -K-A	PT-1-24-11-63	TP-09
-P, -P-LC, -P-A	PT-1-24-01-61	TP-03



PT-1-24-11-63 TUBE  
TP-09 PLUG



PT-1-24-01-61 TUBE  
TP-03 PLUG

**PROPRIETARY NOTE**

THIS DOCUMENT CONTAINS CONFIDENTIAL AND PROPRIETARY INFORMATION AND ALL DESIGN, MANUFACTURING, REPRODUCTION, USE, PATENT RIGHTS AND SALES RIGHTS ARE EXPRESSLY RESERVED BY SAMTEC, INC. THIS DOCUMENT SHALL NOT BE DISCLOSED, IN WHOLE OR PART, TO ANY UNAUTHORIZED PERSON OR ENTITY NOR REPRODUCED, TRANSFERRED OR INCORPORATED IN ANY OTHER PROJECT IN ANY MANNER WITHOUT THE EXPRESS WRITTEN CONSENT OF SAMTEC, INC.

DO NOT SCALE DRAWING

SHEET SCALE: 2:1



520 PARK EAST BLVD, NEW ALBANY, IN 47150  
PHONE: 812-944-6733 FAX: 812-948-5047  
e-Mail info@SAMTEC.com code 55322

DESCRIPTION:  
QUAD ROW STAGGERED SMT SOCKET ASM

DWG. NO.  
**SOLC-1XX-XX-XXX-Q-XX-X-XX**

BY: TIM P. 2/11/2013 SHEET 2 OF 2