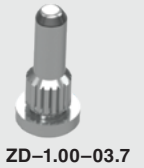




ZHSI-02-01



ZD-1.00-03.7

ZSO, ZD, ZHSI SERIES

# Z-RAY® PRESS-FIT ALIGNMENT HARDWARE

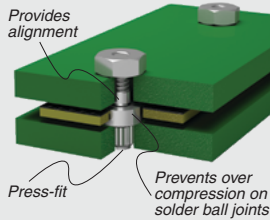
## SPECIFICATIONS

For complete specifications and recommended PCB layouts see [www.samtec.com?ZSO](http://www.samtec.com?ZSO), [www.samtec.com?ZD](http://www.samtec.com?ZD) or [www.samtec.com?ZHSI](http://www.samtec.com?ZHSI)

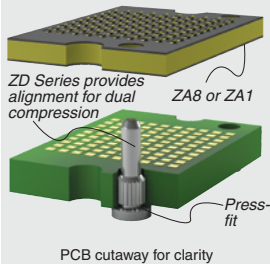
**Material:** Brass  
**Plating:** 100 µ" (2.54 µm) Ni

## APPLICATIONS

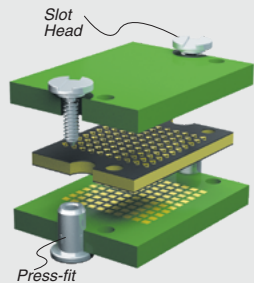
### ZSO APPLICATION



### ZD APPLICATION



### ZHSI APPLICATION

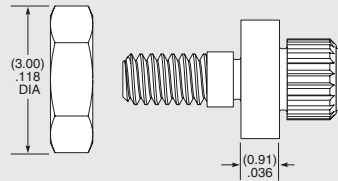


ZSO

STACK HEIGHT

01

-0100  
= 1.00 mm (.0394")



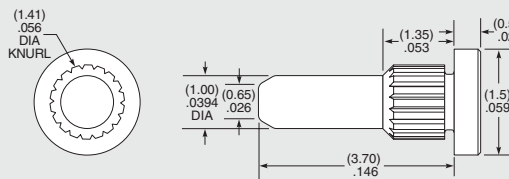
ZD

DIAMETER

LENGTH

-1.00  
= 1.00 mm (.0394")

-03.7  
= 03.7 mm (.146")



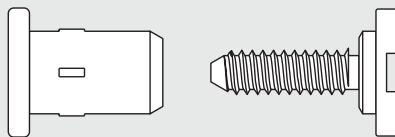
ZHSI

STACK HEIGHT

HEAD SPECIFICATION

Specify STACK HEIGHT from chart below.

-01  
= Slot Head



STACK HEIGHT	PCB 1 THICKNeSS	PCB 2 THICKNeSS	INTERPOSER HEIGHT
-01	(1.57) 0.062	(1.57) 0.062	(1.00) 0.039
-02	(2.36) 0.093	(1.57) 0.062	(1.00) 0.039
-02	(2.36) 0.093	(2.36) 0.065	(1.00) 0.039
-02	(3.18) 0.125	(1.57) 0.062	(1.00) 0.039
-03	(3.18) 0.125	(2.36) 0.093	(1.00) 0.039

**Note:** Overtightening may cause screw damage. Contact Samtec for specific torque details.

*Due to technical progress, all designs, specifications and components are subject to change without notice.*

[WWW.SAMTEC.COM](http://WWW.SAMTEC.COM)

All parts within this catalog are built to Samtec's specifications. Customer specific requirements must be approved by Samtec and identified in a Samtec customer-specific drawing to apply.

# Mouser Electronics

Authorized Distributor

Click to View Pricing, Inventory, Delivery & Lifecycle Information:

[Samtec:](#)

[ZSO-0100-01](#) [ZHSI-03-01](#) [ZD-1.00-05.3](#) [ZD-1.00-05.7](#) [ZHSI-02-01](#) [ZD-1.00-03.7](#) [ZHSI-01-01](#)