

DO NOT  
SCALE FROM  
THIS PRINT

GENDER  
-P: PLUG

TYPE  
-C: CABLE

TERMINATION  
-CA2: RG178 CABLE

ORIENTATION  
-RA: RIGHT ANGLE

PLATING SPECIFICATION  
-H: HEAVY GOLD  
(SUB-MCX-P-C-H-RA-CA2)  
(MCX-FER-005-F)  
(MCX-CAP-002-F)  
(MCX-INS-001)

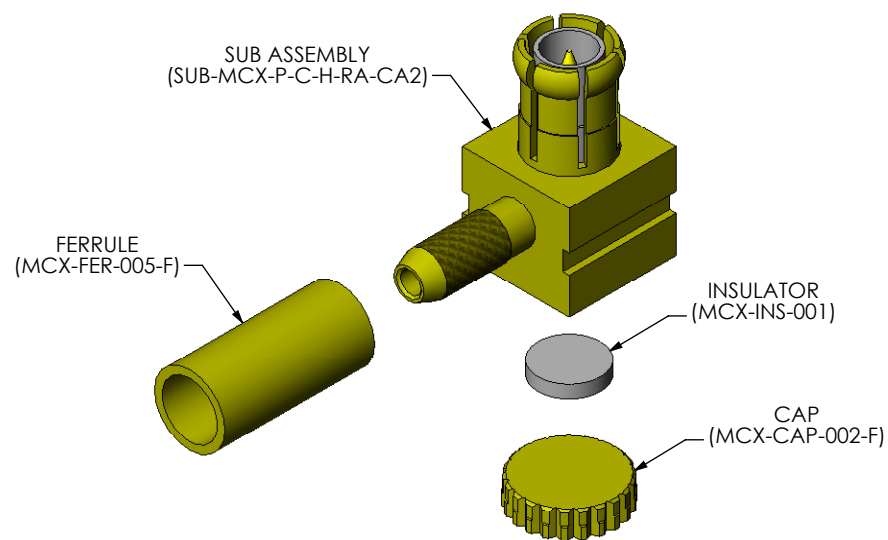
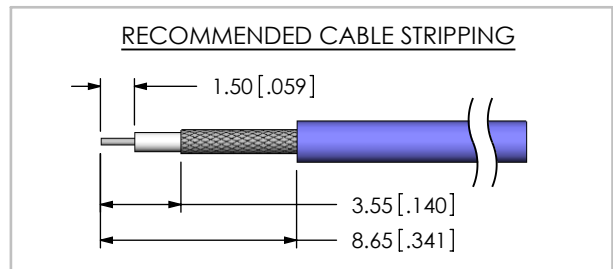



FIG.1  
MCX-P-C-H-RA-CA2  
(SHOWN)

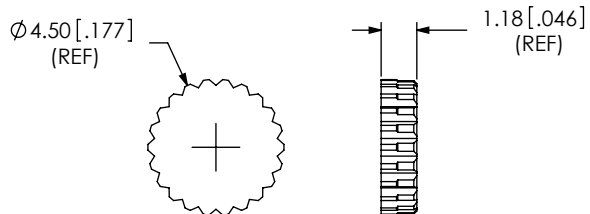


NOTES:

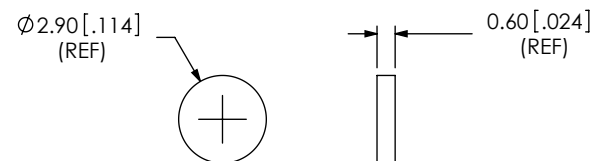
1.  $\text{C}$  REPRESENTS A CRITICAL DIMENSION.
2. SEE SHEET 3 FOR TERMINATION INFORMATION.
3. COMPONENTS TO BE SHIPPED UNASSEMBLED.
4. SAMPLE ORDERS: TO BE PACKAGED IN INDIVIDUAL KIT FORM, PRODUCTION ORDERS: EACH COMPONENT TO BULK PACKAGED.
5. RoHS COMPLIANT.
6. PLATING: -F: 0.00008[.00003] (MIN) GOLD OVER 0.00127[.000050] (MIN) NICKEL.  
-H: 0.00076[.000030] (MIN) GOLD OVER 0.00127[.000050] (MIN) NICKEL.
7. ASSEMBLY PLATING DESIGNATIONS:  
-H: (CENTER CONTACT) -H:  
(OUTER CONTACT) -F:  
(REMAINING METAL PARTS) -F:

F:\DWG\MISC\Mktg\MCX-P-C-X-RA-CA2-MKT.SLDDRW

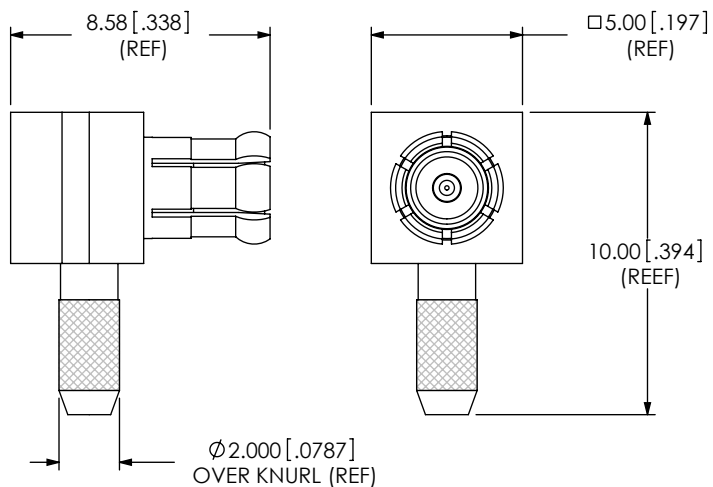
<p>UNLESS OTHERWISE SPECIFIED, DIMENSIONS ARE IN MILLIMETERS [INCHES]. TOLERANCES ARE:</p> <p>DECIMALS      ANGLES</p> <p>.X: <math>\pm 0.3</math> [.01]      2°</p> <p>.XX: <math>\pm 0.13</math> [.005]</p> <p>.XXX: <math>\pm 0.051</math> [.0020]</p>	<p>PROPRIETARY NOTE</p> <p>THIS DOCUMENT CONTAINS INFORMATION CONFIDENTIAL AND PROPRIETARY TO SAMTEC, INC. AND SHALL NOT BE REPRODUCED OR TRANSFERRED TO OTHER DOCUMENTS OR DISCLOSED TO OTHERS OR USED FOR ANY PURPOSE OTHER THAN THAT WHICH IT WAS OBTAINED WITHOUT THE EXPRESSED WRITTEN CONSENT OF SAMTEC, INC.</p>	 <p>520 PARK EAST BLVD, NEW ALBANY, IN 47150 PHONE: 812-944-6733 FAX: 812-948-5047 e-Mail: info@SAMTEC.com code: 55322</p>
<p>MATERIAL: DO NOT SCALE DRAWING SHEET SCALE: 4:1</p>	<p>DESCRIPTION: MCX, RA CABLE PLUG, RG178, 50 OHM</p> <p>DWG. NO. <b>MCX-P-C-X-RA-CA2</b></p> <p>BY: R MUSSER 02/06/2008 SHEET 1 OF 3</p>	



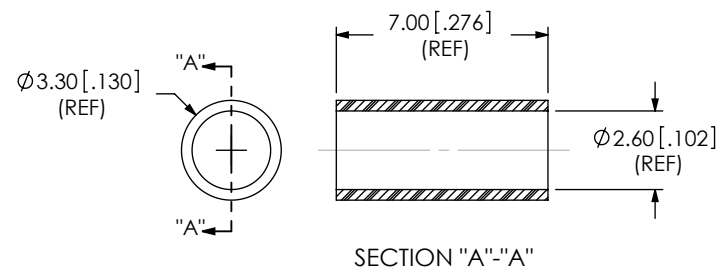
SAMTEC PART NUMBER	ITEM
MCX-CAP-002-X	CAP



SAMTEC PART NUMBER	ITEM
MCX-INS-001	INSULATOR



SAMTEC PART NUMBER	ITEM
SUB-MCX-P-C-X-RA-CA2	SUB ASSEMBLY



SAMTEC PART NUMBER	ITEM
MCX-FER-005-X	FERRULE

F:\DWG\MISC\Mktg\MCX-P-C-X-RA-CA2-MKT.SLDDRW

**PROPRIETARY NOTE**  
 THIS DOCUMENT CONTAINS INFORMATION  
 CONFIDENTIAL AND PROPRIETARY TO  
 SAMTEC, INC. AND SHALL NOT BE REPRODUCED  
 OR TRANSFERRED TO OTHER DOCUMENTS OR  
 DISCLOSED TO OTHERS OR USED FOR ANY  
 PURPOSE OTHER THAN THAT WHICH IT WAS  
 OBTAINED WITHOUT THE EXPRESSED WRITTEN  
 CONSENT OF SAMTEC, INC.

DO NOT SCALE DRAWING

SHEET SCALE: 4:1

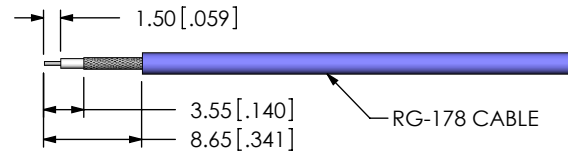


520 PARK EAST BLVD, NEW ALBANY, IN 47150  
 PHONE: 812-944-6733 FAX: 812-948-5047  
 e-Mail: info@SAMTEC.com code: 55322

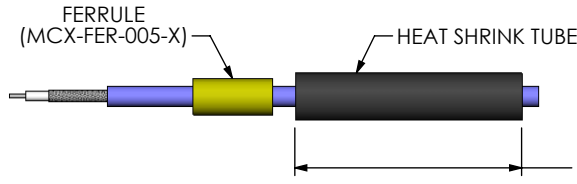
DESCRIPTION:  
 MCX, RA CABLE PLUG, RG178, 50 OHM

DWG. NO.  
 MCX-P-C-X-RA-CA2

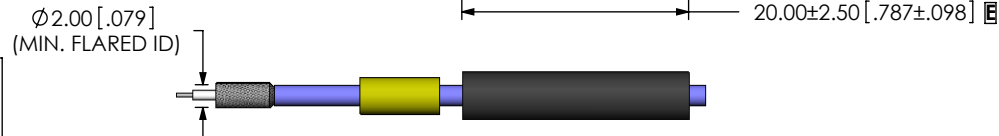
BY: R MUSSER 02/06/2008 SHEET 2 OF 3



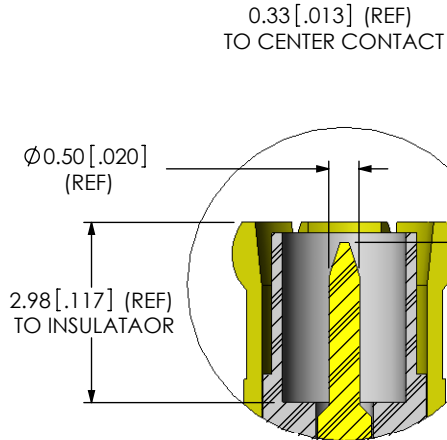
STRIP AND TIN INNER CONDUCTOR



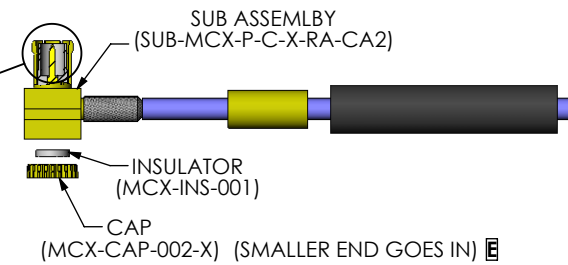
ADD HEAT SHRINK TUBE AND FERRULE



FLARE SHIELD

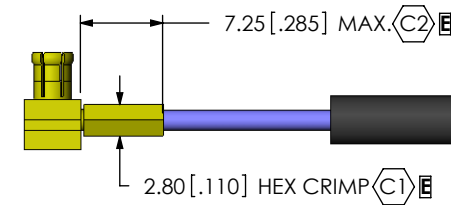
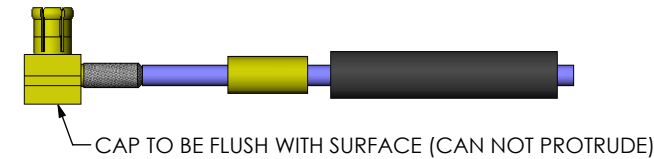


DETAIL 'A'  
SCALE 8:1

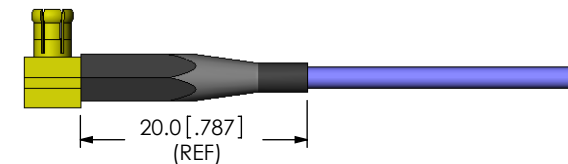


ADD SUB-MCX-P-C-X-RA-CA2

SOLDER SIGNAL PIN, INSERT INSULATOR AND CAP



CRIMP FERRULE  
(USE RF CRIMP HAND TOOL # CAT-HT-126667-21)



APPLY HEAT SHRINK TUBING

F:\DWG\MISC\Mktg\MCX-P-C-X-RA-CA2-MKT.SLDDRW

**PROPRIETARY NOTE**  
THIS DOCUMENT CONTAINS INFORMATION CONFIDENTIAL AND PROPRIETARY TO SAMTEC, INC. AND SHALL NOT BE REPRODUCED OR TRANSFERRED TO OTHER DOCUMENTS OR DISCLOSED TO OTHERS OR USED FOR ANY PURPOSE OTHER THAN THAT WHICH IT WAS OBTAINED WITHOUT THE EXPRESSED WRITTEN CONSENT OF SAMTEC, INC.

DO NOT SCALE DRAWING

SHEET SCALE: 1.5:1



520 PARK EAST BLVD, NEW ALBANY, IN 47150  
PHONE: 812-944-6733 FAX: 812-948-5047  
e-Mail: info@SAMTEC.com code: 55322

DESCRIPTION:  
MCX, RA CABLE PLUG, RG178, 50 OHM

DWG. NO.  
**MCX-P-C-X-RA-CA2**

BY: R MUSSER 02/06/2008 SHEET 3 OF 3