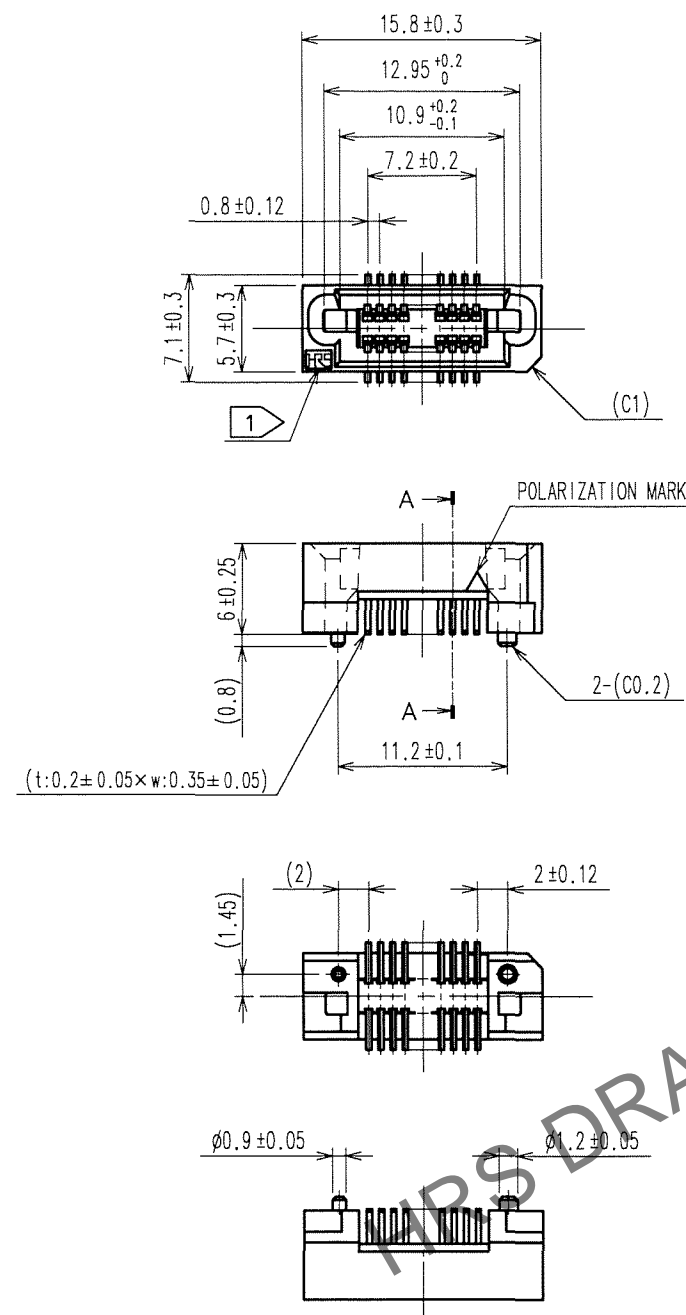
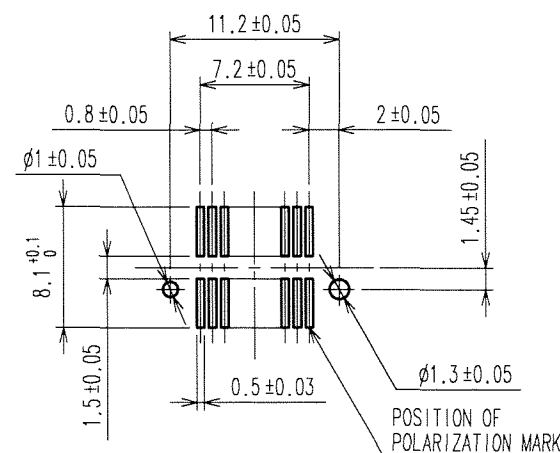


Jun.1.2024 Copyright 2024 HIROSE ELECTRIC CO., LTD. All Rights Reserved.

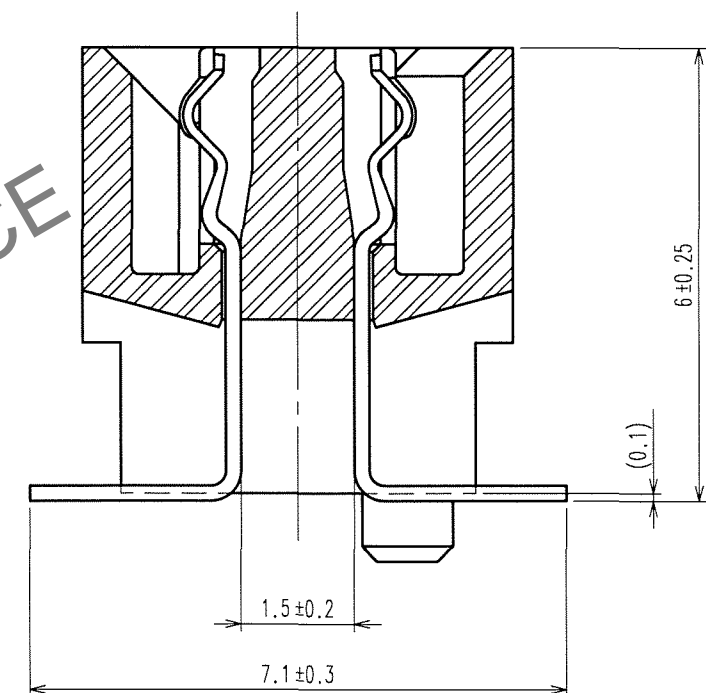
	COUNT	DESCRIPTION OF REVISIONS	BY	CHKD	DATE		COUNT	DESCRIPTION OF REVISIONS	BY	CHKD	DATE
△					. .	△					. .
△					. .	△					. .
△					. .	△					. .



RECOMMENDED LAND PATTERN DIMENSION OF PCB (MOUNTING SIDE)



A-A (10:1)



- NOTE 1 HRS MARK SHALL BE OPTIONAL.
- 2 LEAD CO-PLANARITY SHALL BE 0.1mm MAX.
 - 3 EMBOSSED CARRIER TAPE PACKAGING SHALL BE APPLIED TO THIS PRODUCT.
SEE NEXT PAGE FOR DETAILS.
 - 4 THIS PRODUCT HAS TAPE FOR VACUUM PICKUP.
SEE NEXT PAGE FOR DETAIL OF STICKING POSITION, ETC.
 - 5 FOR MODIFICATION, ETC, PREVENTIVE HOLE FOR SINK MARK MAY BE
ADDED ACCORDING TO CIRCUMSTANCES.
 - 6 THE DIMENSIONS IN PARENTHESES ARE FOR REFERENCE.

1	PPS	LIGHT BROWN (UL94V-0)	2	PHOSPHOR BRONZE	CONTACT AREA:GOLD 0.1μm min.
					LEAD AREA:TIN-PLATING 1μm min.
					UNDER PLATING:NICKEL 2μm min.
NO.	MATERIAL	FINISH, REMARKS	NO.	MATERIAL	FINISH, REMARKS
CODE NO. (OLD)		DRAWN	DESIGNED	CHECKED	APPROVED
		S.KAMIGA	<i>S. Kamiga</i>	<i>S. Ogawa</i>	<i>H. Okawa</i>
		06.09.28	06.09.28	06.09.30	06.09.30
DRAWING NO.		PART NO.			
EDC3-084978-23		FX6-20S-0.8SV2(93)			
SCALE		CODE NO.			
2 : 1		CL576-0121-5-93			
UNITS		1/2			
mm					
HRS		HIROSE ELECTRIC CO., LTD			

TO

2	POLYESTER	(TOP COVER TAPE)	4	POLYIMIDE	(TAPE FOR VUCCUM PICKUP)	
1	POLYSTYRENE	(EMBOSSED CARRIER TAPE)	3		(CONNECTOR)	
NO.	MATERIAL	FINISH, REMARKS	NO.	MATERIAL	FINISH, REMARKS	
CODE NO. (OLD)		DRAWN	DESIGNED	CHECKED	APPROVED	RELEASED
		S.KAMIGA	<i>H. Nakamura</i>	<i>M. Ogawa</i>	<i>H. Okawa</i>	
		06.09.28	06.09.28	06.09.30	06.09.30	. .
DRAWING NO.			PART NO.			
EDC3-084978-23			FX6-20S-0.8SV2(93)			
SCALE			CODE NO.			
2 : 1			CL576-0121-5-93			
UNITS			2			
HRS			HIROSE ELECTRIC CO., LTD			