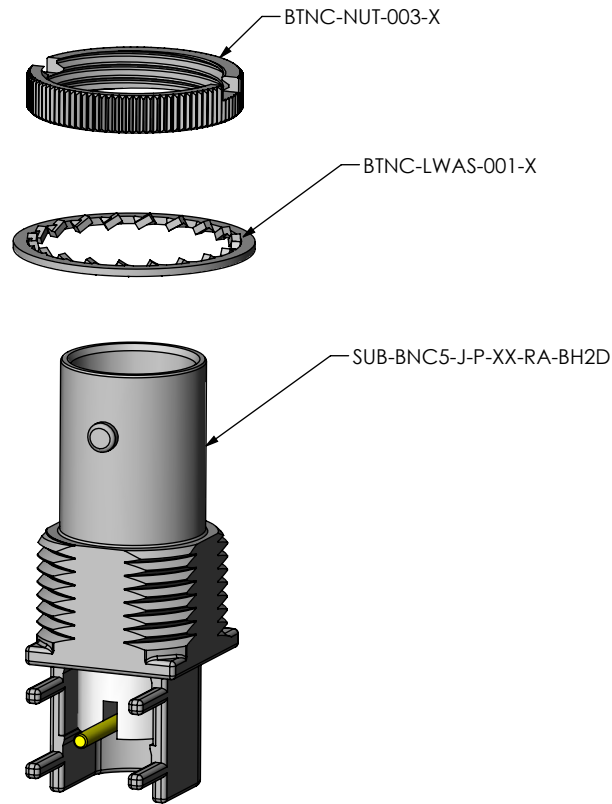


**DESIGNED & DIMENSIONED
IN MILLIMETERS [INCHES]**



BNC5-J-P-XX-RA-BH2D-X

SERIES
BNC 50 OHM

GENDER
-J: JACK

TYPE
-P: PCB

PACKAGING
-BLANK: INDIVIDUAL BAGGED
-B: BULK PACKAGED (QTY=100 MAX)

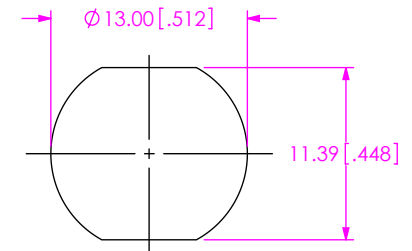
TERMINATION
-BH2D: DIE CAST BULKHEAD THROUGH HOLE

ORIENTATION
-RA: RIGHT ANGLE

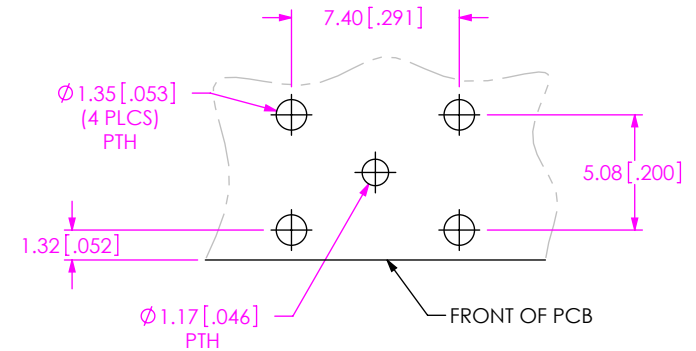
PLATING SPECIFICATION
-HN: HEAVY GOLD/NICKEL (SEE NOTES 3 & 4)
(SUB-BNC5-J-P-HN-RA-BH2D)
(BTNC-NUT-003-N)
(BTNC-LWAS-001-N)

-GN: GOLD/NICKEL (SEE NOTES 3 & 4)
(SUB-BNC5-J-P-GN-RA-BH2D)
(BTNC-NUT-003-N)
(BTNC-LWAS-001-N)

RECOMMENDED MOUNTING HOLE
4.00 [1.57] MAX. PANEL THICKNESS



RECOMMENDED PCB LAYOUT



NOTES:

1. Ⓢ REPRESENTS A CRITICAL DIMENSION.
2. RoHS COMPLIANT.
3. COMPONENT PLATING DESIGNATIONS:
-H: 0.000030" MIN. GOLD OVER 0.000050" MIN. NICKEL.
-G: 0.000010" MIN. GOLD OVER 0.000050" MIN. NICKEL.
-N: 0.000100" MIN. NICKEL.
4. ASSEMBLY PLATING DESIGNATIONS:
-HN: (CENTER CONTACT)-H
(OUTER CONTACT) -N
(REMAINING METAL PARTS) -N
-GN: (CENTER CONTACT)-G
(OUTER CONTACT) -N
(REMAINING METAL PARTS) -N
5. PRODUCT TO BE PACKAGED PER PRECISION RF SECTION OF PACKAGING MANUAL.
6. NUT AND WASHER TO BE PACKAGED SEPARATELY.

**THIS PRODUCT MANUFACTURED
WITH LEAD-FREE PROCESSING**

UNLESS OTHERWISE SPECIFIED,
DIMENSIONS ARE IN
MILLIMETERS [INCHES].
TOLERANCES ARE:
DECIMALS ANGLES
.X: ±0.3 [0.1] 5°
.XX: ±0.13 [0.05]
.XXX: ±0.051 [0.020]

PROPRIETARY NOTE
THIS DOCUMENT CONTAINS INFORMATION
CONFIDENTIAL AND PROPRIETARY TO
SAMTEC, INC. AND SHALL NOT BE REPRODUCED
OR TRANSFERRED TO OTHER DOCUMENTS OR
DISCLOSED TO OTHERS OR USED FOR ANY
PURPOSE OTHER THAN THAT WHICH IT WAS
OBTAINED WITHOUT THE EXPRESSED WRITTEN
CONSENT OF SAMTEC, INC.

samtec

520 PARK EAST BLVD, NEW ALBANY, IN 47150
PHONE: 812-944-6733 FAX: 812-948-5047
e-Mail: info@SAMTEC.com code: 55322

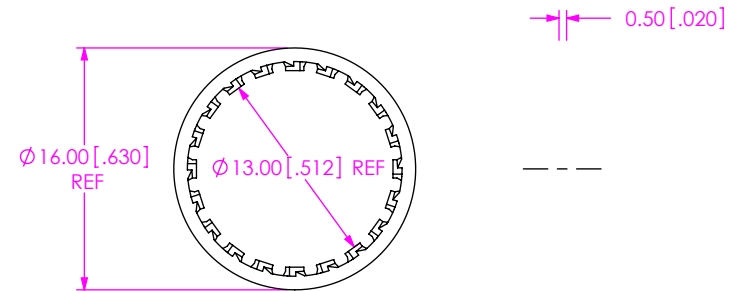
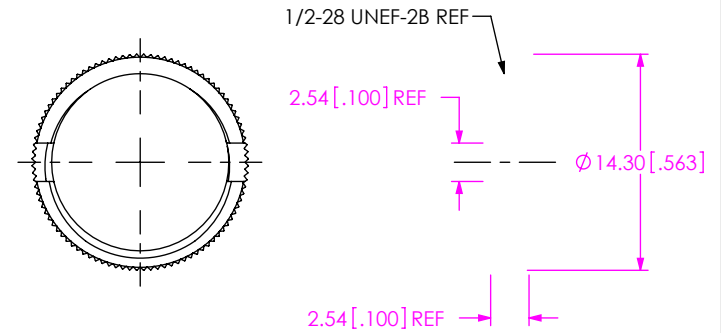
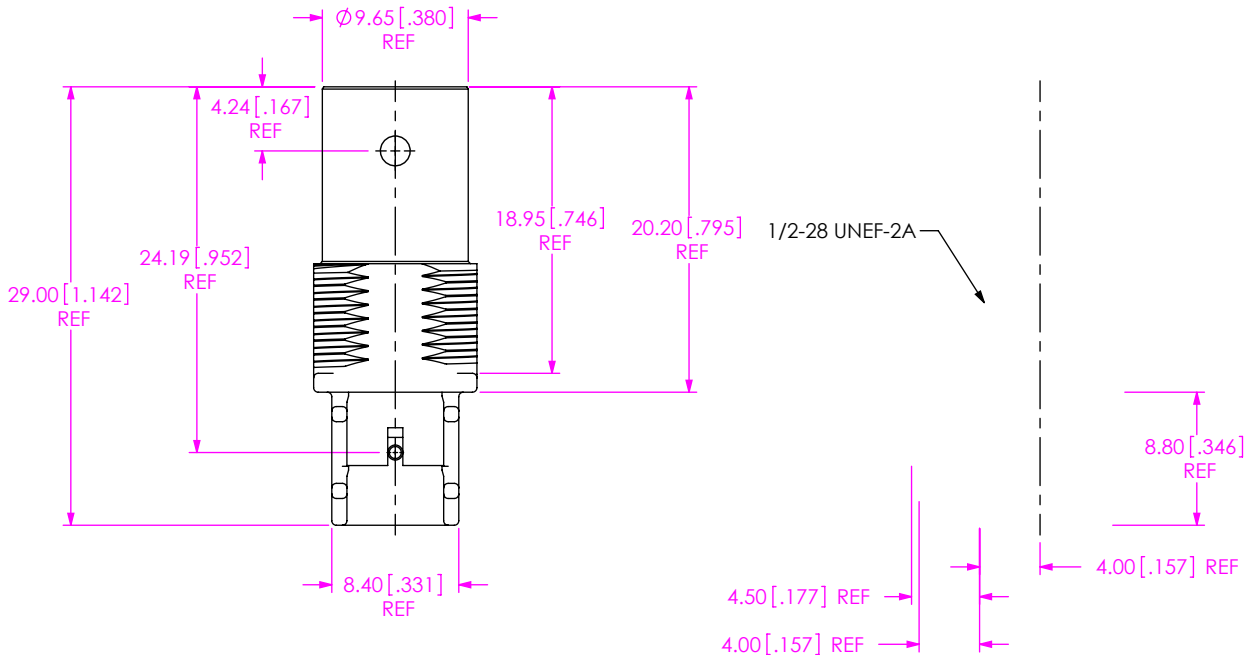
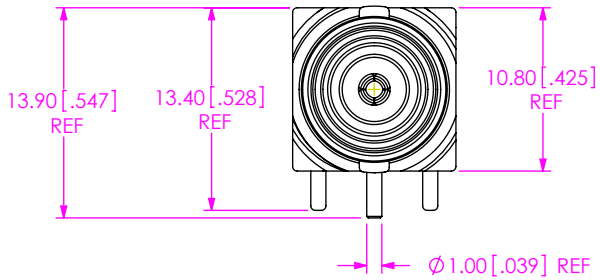
MATERIAL: DO NOT SCALE DRAWING SHEET SCALE: 2:1

SHELL: ZINC
NUT, WASHER: BRASS
CONTACT: PHOS BRONZE
DIELECTRIC: PTFE

DESCRIPTION:
BNC 50 OHM RIGHT ANGLE JACK

DWG. NO.
BNC5-J-P-XX-RA-BH2D-X

BY: ALVIN W 07/01/2010 SHEET 1 OF 3



SAMTEC PART NUMBER	ITEM	ITEM NUMBER
BTNC-LW AS-001-X	LOCKWASHER	2

SAMTEC PART NUMBER	ITEM	ITEM NUMBER
SUB-BNC5-J-P-XX-RA-BH2D	SUB ASSEMBLY	1

PROPRIETARY NOTE
 THIS DOCUMENT CONTAINS INFORMATION CONFIDENTIAL AND PROPRIETARY TO SAMTEC, INC. AND SHALL NOT BE REPRODUCED OR TRANSFERRED TO OTHER DOCUMENTS OR DISCLOSED TO OTHERS OR USED FOR ANY PURPOSE OTHER THAN THAT WHICH IT WAS OBTAINED WITHOUT THE EXPRESSED WRITTEN CONSENT OF SAMTEC, INC.



520 PARK EAST BLVD, NEW ALBANY, IN 47150
 PHONE: 812-944-6733 FAX: 812-948-5047
 e-Mail: info@SAMTEC.com code: 55322

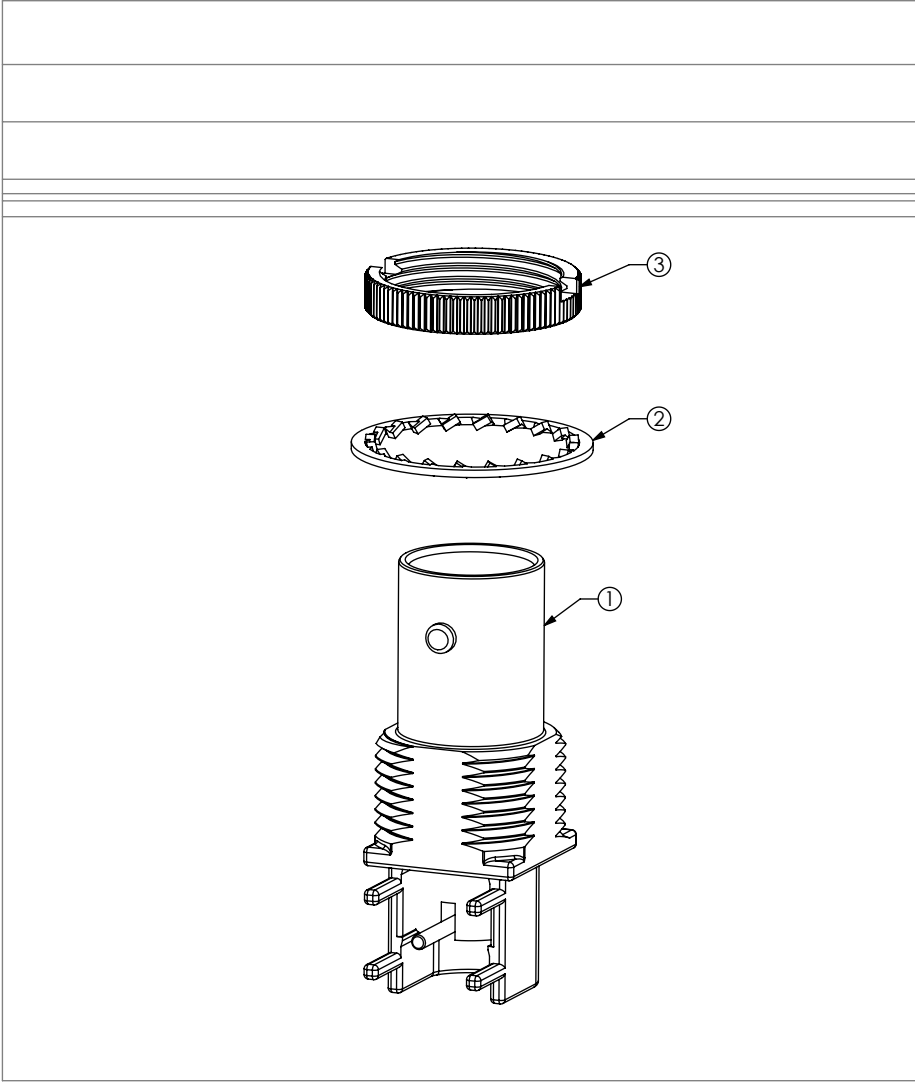
DO NOT SCALE DRAWING

SHEET SCALE: 2:1

DESCRIPTION:
 BNC 50 OHM RIGHT ANGLE JACK

DWG. NO.
 BNC5-J-P-XX-RA-BH2D-X

BY: ALVIN W 07/01/2010 SHEET 2 OF 3



BNC5-J-P-XX-RA-BH2D SHOWN

PROPRIETARY NOTE

THIS DOCUMENT CONTAINS CONFIDENTIAL AND PROPRIETARY INFORMATION AND ALL DESIGN, MANUFACTURING, REPRODUCTION, USE, PATENT RIGHTS AND SALES RIGHTS ARE EXPRESSLY RESERVED BY SAMTEC, INC. THIS DOCUMENT SHALL NOT BE DISCLOSED, IN WHOLE OR PART, TO ANY UNAUTHORIZED PERSON OR ENTITY NOR REPRODUCED, TRANSFERRED OR INCORPORATED IN ANY OTHER PROJECT IN ANY MANNER WITHOUT THE EXPRESS WRITTEN CONSENT OF SAMTEC, INC.



520 PARK EAST BLVD, NEW ALBANY, IN 47150
 PHONE: 812-944-6733 FAX: 812-948-5047
 e-Mail: info@SAMTEC.com code: 55322

DO NOT SCALE DRAWING SHEET SCALE: 2:1
 INSULATOR:
 CONTACT OR TERMINAL:
 SHIELD: PHOS BRONZE
 PLATING:
 CONTACT AREA: .000010 REF GOLD
 REMAINDER: .000200 REF TIN

DESCRIPTION: BNC 50 OHM RIGHT ANGLE JACK
 DWG. NO. BNC5-J-P-XX-RA-BH2D-X
 BY: ALVIN W 07/01/2010 SHEET 3 OF 3