



Pegler Yorkshire
connect & control

Prestex

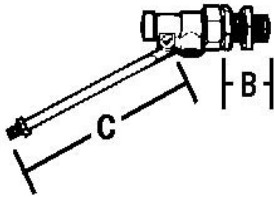
Floatvalve Nylon Seat BS 1212 Part one high pressure

857N



Size	Pattern No.	Pack 1 Qty	Pack 2 Qty	Code	Barcode	Price (£) ex VAT
1/2	857N	20	0	514007	5013866016578	£10.67
3/4	857N	5	0	514008	5013866016585	£57.30
1	857N	1	20	514009	5013866006708	£141.16
1/2	857N-Z	20	0	514017	5013866016592	£10.24
1/2	857N-S	20	0	514018	5013866032264	£13.43
1/2	857N-Y	10	0	514027	5013866016608	£15.90
1/2	857N-X	10	0	514037	5013866016615	£13.43
1/2	857N-W	10	0	514047	5013866016622	£15.34
1/2	857N-V	10	0	514057	5013866016639	£18.15
1/2	857N-U	10	0	514067	5013866016646	£22.92

857N



Code	Description	A	B	C	Kg
514007	1/2 857N BRASS PT.1 FLOATVALVE (HP)	No. 3 (1/8")	1 1/4"	8 3/4"	0.39
514008	3/4 857N BRASS PT.1 FLOATVALVE (HP)	No. 6 (1/4")	1 1/4"	13"	0.90
514009	1 857N GUNMETAL PT.1 FLOATVALVE (HP)	No. 9 (3/8")	1 1/2"	16"	1.93
514017	1/2 857N-Z BRASS PT.1 FLOATVALVE (HP)	No. 3 (1/8")	1 1/4"	8 3/4"	0.35
514018	1/2 857N-S BRASS PT.1 FLOATVALVE (HP)	No. 5 (3/16")	1 1/4"	8 3/4"	0.39
514027	1/2 857N-Y BRASS PT.1 FLOATVALVE (HP)	No. 3 (1/8")	1 1/4"	8 3/4"	0.42
514037	1/2 857N-X BRASS PT.1 FLOATVALVE (HP)	No. 3 (1/8")	1 1/4"	10 1/2"	0.43
514047	1/2 857N-W BRASS PT.1 FLOATVALVE (HP)	No. 3 (1/8")	1 7/8"	10 1/2"	0.46
514057	1/2 857N-V BRASS PT.1 FLOATVALVE (HP)	No. 3 (1/8")	1 7/8"	10 1/2"	0.48
514067	1/2 857N-U BRASS PT.1 FLOATVALVE (HP)	No. 3 (1/8")	2 1/2"	10 1/2"	0.46

Pegler Yorkshire reserve the right to change specifications

Valves and Fittings

Pegler Yorkshire Customcare 5 Year Guarantee - Terms and Conditions

Products are subject to a 5 year guarantee that is between Pegler Yorkshire and the final purchaser of the product.

The guarantee is subject to proof of purchase being supplied.

This guarantee does not affect any statutory rights the consumer may have in law.

The guarantee covers manufacturing or material defects and does not cover parts subject to normal wear and tear.

This product range has been designed for the use of homeowners, domestic and commercial applications and therefore the guarantee is subject to the product being properly selected for their intended service conditions.

The guarantee is not applicable where the product is fitted contrary to the conditions in the fitting instructions.

This is reinforced where valves are covered by the European Pressure Equipment Directive (PED97/23/EC) where Installation, Operating and Maintenance Instructions are supplied with each product and/or carton.

Provided it is installed correctly and receives adequate preventative maintenance it should give years of trouble-free service.

Abusive behaviour and accidental damage to the product are not covered by this guarantee.

The extent of this liability is limited to the cost of the replacement of the defective item and not to fitting or consequential damages.

Description	Minimum Operating Pressure (bar)	Maximum Cold Working Pressure (bar)	Maximum Hot Working Pressure (bar)
857 Nylon Seat	No Minimum Operating Pressure	14.0 bar at temperatures up to 85oC	Not Suitable for Maximum Hot Working Pressure

Care

No regular aesthetic care is required for this product

Maintenance

No regular maintenance is required for this product.

For any further help please contact the Service Support Team on: 0800 1560050.

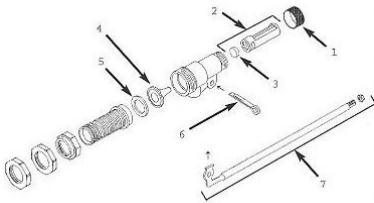
Regulations

It is important to ensure that the water supplies to your fittings are connected in accordance with the water regulations (WRAS) requirements and good plumbing practice.

This product has been designed in accordance with BS1212 part 1 standard.

Component	Material
Body	Brass
Body cap	Brass
Lever	Brass
Cotter pin	Brass
Lever nut	Brass
Body union nut	Brass
Tail pipe	Brass
Union nut washer	Fibre
Backnuts	Brass or nylon
Seat	Nylon
Piston	Brass or Nylon
Piston washer	NBR
Cap seal	NBR

857N



1						
Spare Key	Description	Code	Barcode	Date From	Date To	Price (£) ex VAT
1	BC1 BODY CAP	816047	5013866057540	01/01/1900	To Current	£1.84
1	BC3 BODY CAP	816013	5013866057397	01/01/1900	To Current	£7.39
1	BC4 BODY CAP	816014	5013866057403	01/01/1900	To Current	£18.50
1	BC1 BODY CAP	816047	5013866057540	01/01/1900	To Current	£1.84
1	BC1 BODY CAP	816047	5013866057540	01/01/1900	To Current	£1.84
1	BC1 BODY CAP	816047	5013866057540	01/01/1900	To Current	£1.84
1	BC1 BODY CAP	816047	5013866057540	01/01/1900	To Current	£1.84
1	BC1 BODY CAP	816047	5013866057540	01/01/1900	To Current	£1.84
1	BC1 BODY CAP	816047	5013866057540	01/01/1900	To Current	£1.84
1	BC1 BODY CAP	816047	5013866057540	01/01/1900	To Current	£1.84
2						
Spare Key	Description	Code	Barcode	Date From	Date To	Price (£) ex VAT
2	P1 PISTON (NYLON)	816200	5013866058127	01/01/1900	To Current	£1.94
2	P3 PISTON (BRASS)	816210	5013866058158	01/01/1900	To Current	£9.64
2	P4 PISTON (BRONZE)	816010	5013866057366	01/01/1900	To Current	£50.46
2	P1 PISTON (NYLON)	816200	5013866058127	01/01/1900	To Current	£1.94
2	P1 PISTON (NYLON)	816200	5013866058127	01/01/1900	To Current	£1.94
2	P2 PISTON (BRASS)	816202	5013866058141	01/01/1900	To Current	£6.15
2	P1 PISTON (NYLON)	816200	5013866058127	01/01/1900	To Current	£1.94
2	P1 PISTON (NYLON)	816200	5013866058127	01/01/1900	To Current	£1.94
2	P2 PISTON (BRASS)	816202	5013866058141	01/01/1900	To Current	£6.15
2	P1 PISTON (NYLON)	816200	5013866058127	01/01/1900	To Current	£1.94
3						
Spare Key	Description	Code	Barcode	Date From	Date To	Price (£) ex VAT
3	VW1 PISTON WASHER	816220	5013866058165	01/01/1900	To Current	£0.75
3	VW2 PISTON WASHER	816221	5013866058172	01/01/1900	To Current	£1.49
3	VW3 PISTON WASHER	816222	5013866058189	01/01/1900	To Current	£4.06
3	VW1 PISTON WASHER	816220	5013866058165	01/01/1900	To Current	£0.75

3	VW1 PISTON WASHER	816220	5013866058165	01/01/1900	To Current	£0.75
3	VW1 PISTON WASHER	816220	5013866058165	01/01/1900	To Current	£0.75
3	VW1 PISTON WASHER	816220	5013866058165	01/01/1900	To Current	£0.75
3	VW1 PISTON WASHER	816220	5013866058165	01/01/1900	To Current	£0.75
3	VW1 PISTON WASHER	816220	5013866058165	01/01/1900	To Current	£0.75
3	VW1 PISTON WASHER	816220	5013866058165	01/01/1900	To Current	£0.75

4

Spare Key	Description	Code	Barcode	Date From	Date To	Price (£) ex VAT
4	ST1 FLOATVALVE SEAT - NYLON (1/8)(WHITE)	816001	5013866057281	01/01/1900	To Current	£1.61
4	ST7 FLOATVALVE SEAT-NYLON (1/4)(NATURAL)	816002	5013866057298	01/01/1900	To Current	£4.06
4	ST11 FLOATVALVE SEAT-NYLON(3/8)(NATURAL)	816003	5013866057304	01/01/1900	To Current	£8.61
4	ST1 FLOATVALVE SEAT - NYLON (1/8)(WHITE)	816001	5013866057281	01/01/1900	To Current	£1.61
4	ST3 FLOATVALVE SEAT-NYLON (3/16)(BLACK)	816008	5013866057359	01/01/1900	To Current	£1.61
4	ST2 FLOATVALVE SEAT - NYLON (1/4)(RED)	816007	5013866057342	01/09/2003	To Current	£1.61
4	ST1 FLOATVALVE SEAT - NYLON (1/8)(WHITE)	816001	5013866057281	01/01/1900	To Current	£1.61
4	ST1 FLOATVALVE SEAT - NYLON (1/8)(WHITE)	816001	5013866057281	01/01/1900	To Current	£1.61
4	ST1 FLOATVALVE SEAT - NYLON (1/8)(WHITE)	816001	5013866057281	01/01/1900	To Current	£1.61
4	ST1 FLOATVALVE SEAT - NYLON (1/8)(WHITE)	816001	5013866057281	01/01/1900	To Current	£1.61
4	ST1 FLOATVALVE SEAT - NYLON (1/8)(WHITE)	816001	5013866057281	01/01/1900	To Current	£1.61
4	ST1 FLOATVALVE SEAT - NYLON (1/8)(WHITE)	816001	5013866057281	01/01/1900	To Current	£1.61

5

Spare Key	Description	Code	Barcode	Date From	Date To	Price (£) ex VAT
5	SW17 SEAT WASHER	816090	5013866057649	01/01/1900	To Current	£0.75
5	SW18 SEAT WASHER	816091	5013866057656	01/01/1900	To Current	£0.95
5	SW19 SEAT WASHER	816092	5013866057663	01/01/1900	To Current	£1.72
5	SW17 SEAT WASHER	816090	5013866057649	01/01/1900	To Current	£0.75
5	SW17 SEAT WASHER	816090	5013866057649	01/01/1900	To Current	£0.75
5	SW17 SEAT WASHER	816090	5013866057649	01/01/1900	To Current	£0.75
5	SW17 SEAT WASHER	816090	5013866057649	01/01/1900	To Current	£0.75
5	SW17 SEAT WASHER	816090	5013866057649	01/01/1900	To Current	£0.75
5	SW17 SEAT WASHER	816090	5013866057649	01/01/1900	To Current	£0.75
5	SW17 SEAT WASHER	816090	5013866057649	01/01/1900	To Current	£0.75
5	SW17 SEAT WASHER	816090	5013866057649	01/01/1900	To Current	£0.75

6

Spare Key	Description	Code	Barcode	Date From	Date To	Price (£) ex VAT
6	CTP1 SPLIT COTTER PIN	816240	5013866058271	01/01/1900	To Current	£1.72
6	CTP3 SPLIT COTTER PIN	816241	5013866058288	01/01/1900	To Current	£1.84
6	CTP4 SPLIT COTTER PIN	816242	5013866058295	01/01/1900	To Current	£2.55
6	CTP1 SPLIT COTTER PIN	816240	5013866058271	01/01/1900	To Current	£1.72
6	CTP1 SPLIT COTTER PIN	816240	5013866058271	01/01/1900	To Current	£1.72
6	CTP1 SPLIT COTTER PIN	816240	5013866058271	01/01/1900	To Current	£1.72
6	CTP1 SPLIT COTTER PIN	816240	5013866058271	01/01/1900	To Current	£1.72
6	CTP1 SPLIT COTTER PIN	816240	5013866058271	01/01/1900	To Current	£1.72
6	CTP1 SPLIT COTTER PIN	816240	5013866058271	01/01/1900	To Current	£1.72
6	CTP1 SPLIT COTTER PIN	816240	5013866058271	01/01/1900	To Current	£1.72
6	CTP1 SPLIT COTTER PIN	816240	5013866058271	01/01/1900	To Current	£1.72

7

Spare Key	Description	Code	Barcode	Date From	Date To	Price (£) ex VAT
7	LA1 FLOATVALVE LEVER ARM ASSEMBLY	816060	5013866057564	01/01/1900	To Current	£6.43
7	LA2 FLOATVALVE LEVER ARM ASSEMBLY	816061	5013866057571	01/01/1900	To Current	£9.64
7	LA9 FLOATVALVE LEVER ARM	816073	5013866057618	01/01/1900	To	£49.21

	ASSEMBLY					Current	
7	LA1 FLOATVALVE LEVER ARM ASSEMBLY	816060	5013866057564	01/01/1900	To	£6.43	
					Current		
7	LA1 FLOATVALVE LEVER ARM ASSEMBLY	816060	5013866057564	01/01/1900	To	£6.43	
					Current		
7	LA1 FLOATVALVE LEVER ARM ASSEMBLY	816060	5013866057564	01/01/1900	To	£6.43	
					Current		
7	LA6 FLOATVALVE LEVER ARM ASSEMBLY	816065	5013866057588	01/01/1900	To	£7.39	
					Current		
7	LA6 FLOATVALVE LEVER ARM ASSEMBLY	816065	5013866057588	01/01/1900	To	£7.39	
					Current		
7	LA6 FLOATVALVE LEVER ARM ASSEMBLY	816065	5013866057588	01/01/1900	To	£7.39	
					Current		

Pegler Yorkshire Group Ltd, St Catherine's Ave, Doncaster, S Yorkshire, DN4 8DF
 Telephone: Phone +44 (0) 844 243 4400 Fax: +44 (0) 844 243 9870 Website: www.pegler.yorkshire.co.uk
 Registered office : Pegler Yorkshire Group Ltd, St Catherine's Ave, Doncaster, S Yorkshire, DN4 8DF Company no : 00401507



FLOW RATE & SIZE SELECTION CHART (GPM)

	Static Pressure		BS 1212 PART 1 Seat Bore Size								
	P.S.I.	Feet	1/8"	1/4"	3/8"	1/2"	5/8"	3/4"	15/16"	1"	1 1/4"
LOW PRESSURE	0.5	1.15	0.20	0.82	1.84	3.28	5.12	7.37	11.50	13.10	20.50
	1.0	2.30	0.29	1.16	2.61	4.65	7.25	10.40	16.30	18.60	29.00
	2.0	4.60	0.41	1.65	3.69	6.57	10.30	14.80	23.10	26.30	41.00
	4.0	9.20	0.58	2.33	5.22	9.29	14.50	20.90	32.60	37.10	58.00
	7.0	16.10	0.77	3.08	6.90	12.30	19.20	27.60	43.20	49.10	77.00
	10.0	23.10	0.92	3.69	8.27	14.70	23.00	33.10	51.70	58.90	92.00
	15.0	34.60	1.13	4.52	10.10	18.00	28.20	40.50	63.40	72.00	113.00
	20.0	46.20	1.31	5.22	11.70	20.80	32.50	46.80	73.00	83.00	130.00
	25.0	57.70	1.46	5.82	13.00	23.20	36.30	52.30	82.00	93.00	145.00
	30.0	69.30	1.60	6.40	14.30	25.50	39.80	57.30	90.00	102.00	159.00
35.0	80.80	1.73	6.90	15.50	27.50	43.00	62.00	97.00	110.00	172.00	
40.0	92.40	1.85	7.38	16.50	29.50	46.00	66.00	103.00	118.00	184.00	
MEDIUM PRESSURE	50.0	115.00	2.06	8.24	18.50	32.80	51.00	74.00	115.00	131.00	205.00
	60.0	138.00	2.26	9.02	20.20	36.00	56.00	81.00	125.00	144.00	225.00
	70.0	161.00	2.44	9.74	21.80	38.80	61.00	87.00	136.00	155.00	243.00
	80.0	184.00	2.60	10.40	23.30	41.50	65.00	93.00	146.00	166.00	260.00
	90.0	207.00	2.76	11.00	24.70	44.00	69.00	99.00	155.00	176.00	275.00
	100.0	231.00	2.92	11.60	26.10	46.50	73.00	105.00	163.00	186.00	291.00
HIGH PRESSURE	110.0	254.00	3.06	12.20	27.40	48.80	76.00	109.00	172.00	195.00	305.00
	125.0	289.00	3.26	13.10	29.20	52.10	81.00	117.00	183.00	208.00	325.00
	150.0	346.00	3.58	14.30	32.00	57.10	89.00	128.00	200.00	228.00	356.00
	175.0	404.00	3.86	15.40	34.60	61.60	96.00	138.00	216.00	246.00	385.00
	200.0	462.00	4.13	16.50	37.00	65.90	103.00	148.00	231.00	267.00	412.00

Flow Rate and Size Selection Chart general Notes:

The discharge through a floatvalve is governed by the running pressure maintained at its inlet. In practice this is difficult to measure and so the tables shown indicate the 'estimated' flow rate in G.P.M. that will occur at various static heads for each size of floatvalve or for each size of seat in floatvalves that accept a variety of seat sizes. The flow rates quoted will only occur when the floatvalve is fully open and will reduce as the water level in the tank rises. Excessive pipe runs to the floatvalve will result in lower running pressures and thus reduced flow rates.



RANGE											
	Patt. No.	Size	Piston Material	Backnut Material	Seat Bore	Tail Length	Lever Length	Recommended Float Size		Weight Approx kg	
								Copper	Plastic		
HIGH PRESSURE	NYLON SEAT	857 N	1/2"	Nylon	Brass	No. 3 (1/8")	1 1/4"	8 3/4"	4 1/2" x 5/16"W	4 1/2" x 5/16"W	0.39
		857 N-Z	1/2"	Nylon	Nylon	No. 3 (1/8")	1 1/4"	8 3/4"	4 1/2" x 5/16"W	4 1/2" x 5/16"W	0.34
		857 N-S	1/2"	Nylon	Brass	No. 5 (3/16")	1 1/4"	8 3/4"	4 1/2" x 5/16"W	4 1/2" x 5/16"W	0.39
		857 N-Y	1/2"	Brass	Brass	No. 3 (1/8")	1 1/4"	8 3/4"	4 1/2" x 5/16"W	4 1/2" x 5/16"W	0.42
		857 N-X	1/2"	Nylon	Brass	No. 3 (1/8")	1 1/4"	10 1/2"	4 1/2" x 5/16"W	4 1/2" x 5/16"W	0.41
		857 N-W	1/2"	Nylon	Brass	No. 3 (1/8")	1 7/8"	10 1/2"	4 1/2" x 5/16"W	4 1/2" x 5/16"W	0.43
		857 N-V	1/2"	Brass	Brass	No. 3 (1/8")	1 7/8"	10 1/2"	4 1/2" x 5/16"W	4 1/2" x 5/16"W	0.48
		857 N-U	1/2"	Nylon	Brass	No. 3 (1/8")	2 1/2"	10 1/2"	4 1/2" x 5/16"W	4 1/2" x 5/16"W	0.45
	BRONZE SEAT	857 N	3/4"	Brass	Brass	No. 6 (1/4")	1 1/4"	13"	5 1/2" x 5/16"W	5" x 5/16"W	0.90
		857 N	1"	Bronze	Brass	No. 9 (3/8")	1 1/2"	16"	6" x 7/16"W	6" x 7/16"W	1.67
		857 B-Y	1/2"	Brass	Brass	No. 3 (1/8")	1 1/4"	8 3/4"	4 1/2" x 5/16"W	4 1/2" x 5/16"W	0.43
		857 B-V	1/2"	Brass	Brass	No. 3 (1/8")	1 7/8"	10 1/2"	4 1/2" x 5/16"W	4 1/2" x 5/16"W	0.47
		857 B	3/4"	Brass	Brass	No. 6 (1/4")	1 1/4"	13"	5 1/2" x 5/16"W	5" x 5/16"W	0.92
		857 B	1"	Bronze	Brass	No. 9 (3/8")	1 1/2"	16"	6" x 7/16"W	6" x 7/16"W	1.69
		857 B	1 1/4"	Bronze	Bronze	No. 19 (3/4")	1 7/8"	22 1/2"	8" x 9/16"W	10" x 9/16"W	3.78
		857 B	1 1/2"	Bronze	Bronze	No. 19 (3/4")	1 7/8"	22 1/2"	10" x 9/16"W	10" x 9/16"W	3.90
857 B	2"	Bronze	Bronze	No. 25 (1")	2 1/8"	29"	12" x 5/8"W	12" x 5/8"W	6.76		
LOW PRESSURE	NYLON SEAT	859 N	1/2"	Brass	Brass	No. 9 (3/8")	1 1/4"	8 3/4"	4 1/2" x 5/16"W	4 1/2" x 5/16"W	0.50
		859 N-V	1/2"	Brass	Brass	No. 9 (3/8")	1 7/8"	10 1/2"	4 1/2" x 5/16"W	4 1/2" x 5/16"W	0.53
		859 N	3/4"	Brass	Brass	No. 13 (1/2")	1 1/4"	13"	5 1/2" x 5/16"W	5" x 5/16"W	0.90
	BRONZE SEAT	859 N	1"	Bronze	Brass	No. 16 (5/8")	1 1/2"	16"	6" x 7/16"W	6" x 7/16"W	1.67
		859 B	1/2"	Brass	Brass	No. 9 (3/8")	1 1/4"	8 3/4"	4 1/2" x 5/16"W	4 1/2" x 5/16"W	0.42

Note: It is normal practice to consider the 857 as a high pressure floatvalve and the 859 as a low pressure. It is, however, possible to use a low pressure valve at high pressures provided an appropriate float is used to ensure shut off at the higher pressure. Similarly, a high pressure valve can be used at low pressures provided the resulting lower flow rates are acceptable. Where two seat size options exist for different sizes of floatvalve, select the smaller size of floatvalve if the flow rate through the seat is more than 5% in excess of the flow required.