

ACCELERATE®

(0.635 mm) .025"

ARC6-08-06.0-LU-LD-2-1

ARC6-16-06.0-LU-LU-3-1

ARC6 SERIES

# SLIM BODY CABLE

## SPECIFICATIONS

For complete specifications and recommended PCB layouts see [www.samtec.com?ARC6](http://www.samtec.com?ARC6)

- Cable:** 34 AWG Eye Speed® ultra low skew twinax cable
- Signal Routing:** 100 Ω Differential
- Insulator Material:** LCP
- Terminal Material:** Copper Alloy
- Cable Insulator:** THV
- Operating Temp Range:** -40 °C to +125 °C
- RoHS Compliant:** Yes

Mates with: ARF6

Direct attach technology

EYE SPEED CABLE

34 AWG Eye Speed® ultra low skew twinax cable

Rugged metal latching

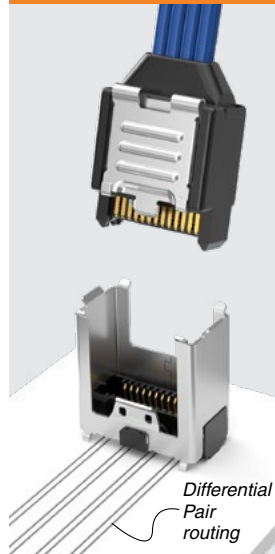
High-density 2-row design

PAM4	NRZ
56 Gbps	28 Gbps

## PROCESSING

Lead-Free Solderable: Yes

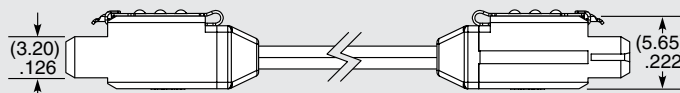
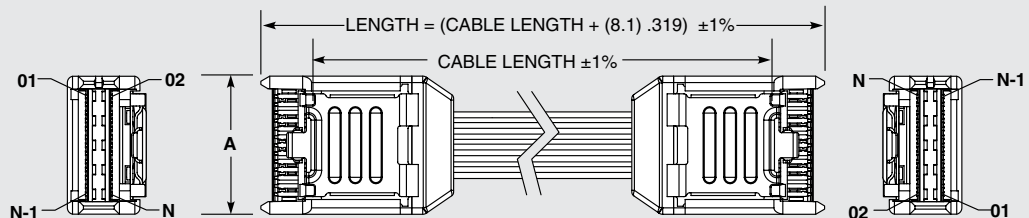
## APPLICATION



Differential Pair routing

ARC6	NO. OF PAIRS	CABLE LENGTH	END 1	END 2	WIRING OPTION	CABLE TYPE
	-08 = 8 Pairs	"XX.X" = Length in Inches 06.0" (152.4 mm) minimum	-LU = Latch Up	-LU = Latch Up	-2 = Pin 1 to Pin 2 (End 2 -LD option only)	-1 = 34 AWG 100 Ω Eye Speed®
	-16 = 16 Pairs					
					-3 = Pin 1 to Pin N-1 (End 2 -LU option only)	

NO. OF PAIRS	A	N	N-1
-08	(10.75) .423	26	25
-16	(18.37) .723	50	49



ARC6-08-XX.X-LU-LU-3-1 SHOWN

**Notes:**  
Cable lengths longer than 40.00" (1 meter) are not supported with S.I. test data.  
Some lengths, styles and options are non-standard, non-returnable.

Due to technical progress, all designs, specifications and components are subject to change without notice.

[WWW.SAMTEC.COM](http://WWW.SAMTEC.COM)

All parts within this catalog are built to Samtec's specifications. Customer specific requirements must be approved by Samtec and identified in a Samtec customer-specific drawing to apply.