

281934-3 ✓ ACTIVE

AMP | AMP Superseal 1.5mm Series

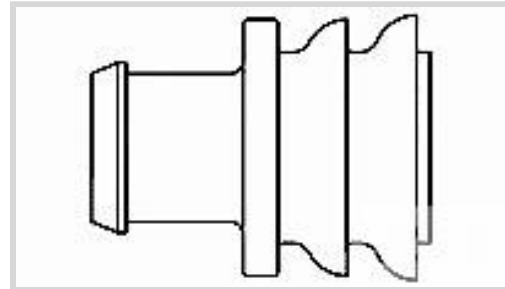
TE Internal #: 281934-3

Single Wire Seal (SWS), Silicone, Red, 5.5 mm [.217 in] Cavity Diameter, 2.5 – 3.3 mm [.098 – .13 in] Insulation Diameter, AMP Superseal 1.5mm Series

[View on TE.com >](#)



[Connectors >](#) [Connector Accessories >](#) [Connector Seals & Cavity Plugs >](#) [Low Power Terminals Single Wire Seals 1.2mm-2.8mm](#)



Connector Seal & Plug Type: **Single Wire Seal (SWS)**

Primary Product Material: **Silicone**

Primary Product Color: **Red**

Cavity Diameter: **5.5 mm [.217 in]**

Compatible Insulation Diameter Range: **2.5 – 3.3 mm [.098 – .13 in]**

[All Low Power Terminals Single Wire Seals 1.2mm-2.8mm \(6\)](#)

Features

Product Type Features

Connector Seal & Plug Type	Single Wire Seal (SWS)
----------------------------	------------------------

Body Features

Primary Product Material	Silicone
--------------------------	----------

Primary Product Color	Red
-----------------------	-----

Dimensions

Cavity Diameter	5.5 mm[.217 in]
-----------------	-----------------

Compatible Insulation Diameter Range	2.5 – 3.3 mm[.098 – .13 in]
--------------------------------------	-----------------------------

Usage Conditions

Operating Temperature (Max)	65 °C, 70 °C, 75 °C, 80 °C, 85 °C, 90 °C, 100 °C, 105 °C, 110 °C, 120 °C, 125 °C, 130 °C [149 °F][158 °F][167 °F][176 °F][185 °F][194 °F][212 °F][221 °F][230 °F][248 °F][257 °F][266 °F]
-----------------------------	--

Operating Temperature Range	-40 – 130 °C[-40 – 266 °F]
-----------------------------	----------------------------

Industry Standards

UL Flammability Rating	None
------------------------	------

Other

Resistance to Hydrocarbons	Poor
----------------------------	------



Shore A Hardness	50
Contains Lubricant	Yes

Product Compliance

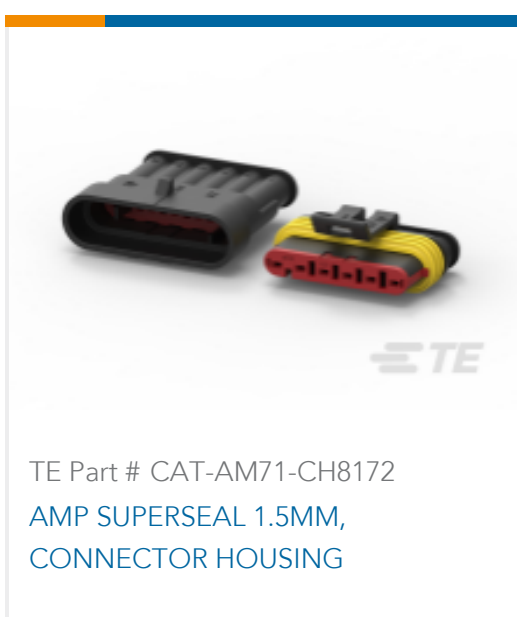
[For compliance documentation, visit the product page on TE.com>](#)

EU RoHS Directive 2011/65/EU	Compliant
EU ELV Directive 2000/53/EC	Compliant
China RoHS 2 Directive MIIT Order No 32, 2016	No Restricted Materials Above Threshold
EU REACH Regulation (EC) No. 1907/2006	Current ECHA Candidate List: JUNE 2024 (241) Candidate List Declared Against: JUNE 2024 (241) Does not contain REACH SVHC
Halogen Content	BFR/CFR/PVC Free, but Br/Cl >900 ppm in other sources.
Solder Process Capability	Not applicable for solder process capability

Product Compliance Disclaimer

This information is provided based on reasonable inquiry of our suppliers and represents our current actual knowledge based on the information they provided. This information is subject to change. The part numbers that TE has identified as EU RoHS compliant have a maximum concentration of 0.1% by weight in homogenous materials for lead, hexavalent chromium, mercury, PBB, PBDE, DBP, BBP, DEHP, DIBP, and 0.01% for cadmium, or qualify for an exemption to these limits as defined in the Annexes of Directive 2011/65/EU (RoHS2). Finished electrical and electronic equipment products will be CE marked as required by Directive 2011/65/EU. Components may not be CE marked. Additionally, the part numbers that TE has identified as EU ELV compliant have a maximum concentration of 0.1% by weight in homogenous materials for lead, hexavalent chromium, and mercury, and 0.01% for cadmium, or qualify for an exemption to these limits as defined in the Annexes of Directive 2000/53/EC (ELV). Regarding the REACH Regulation, the information TE provides on SVHC in articles for this part number is based on the latest European Chemicals Agency (ECHA) 'Guidance on requirements for substances in articles' posted at this URL: <https://echa.europa.eu/guidance-documents/guidance-on-reach>

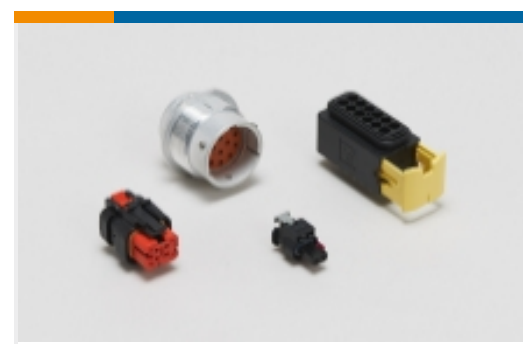
Compatible Parts



Also in the Series | AMP Superseal 1.5mm Series



Automotive Connector Caps & Covers (2)



Automotive Housings(36)



Automotive Terminals(17)



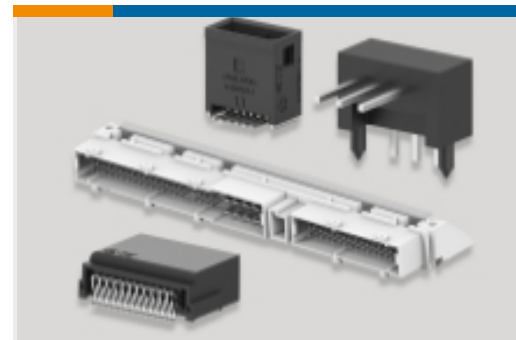
Connector Seals & Cavity Plugs(8)



Insertion & Extraction Tools(3)

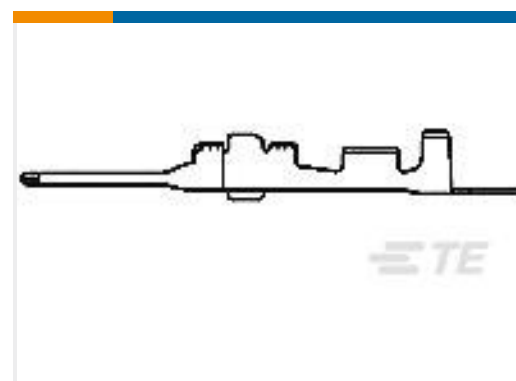
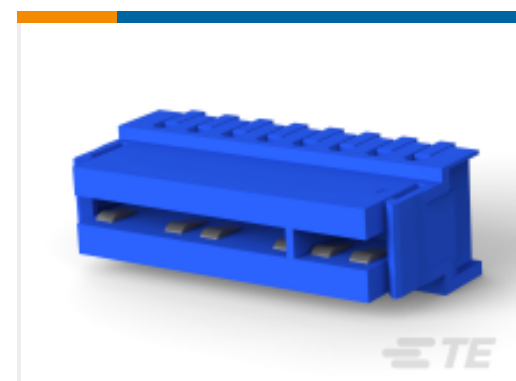


Other Automotive Connector Accessories(3)



PCB Headers & Receptacles(2)

Customers Also Bought

TE Part #282107-1
AMP SUPERSEAL 1.5MM,
CONNECTOR HOUSINGTE Part #282465-1
AMP SUPERSEAL 1.5MM,
RECEPTACLE AND TABTE Part #917067-6
040-2 TAB CONT S GOLD 22-18TE Part #284866-8
Direct mount card edge conn.,

Documents

Product Drawings

SINGLE WIRE SEAL

English

CAD Files

3D PDF

3D

Customer View Model

[ENG_CVM_CVM_281934-3_H.2d_dxf.zip](#)

English

Customer View Model

[ENG_CVM_CVM_281934-3_H.3d_igs.zip](#)

English

Customer View Model

[ENG_CVM_CVM_281934-3_H.3d_stp.zip](#)

English

By downloading the CAD file I accept and agree to the [Terms and Conditions](#) of use.



Datasheets & Catalog Pages

[ICT Terminals and Connectors Catalogue](#)

English

Product Specifications

[AMP Superseal 1.5 series](#)

English

English