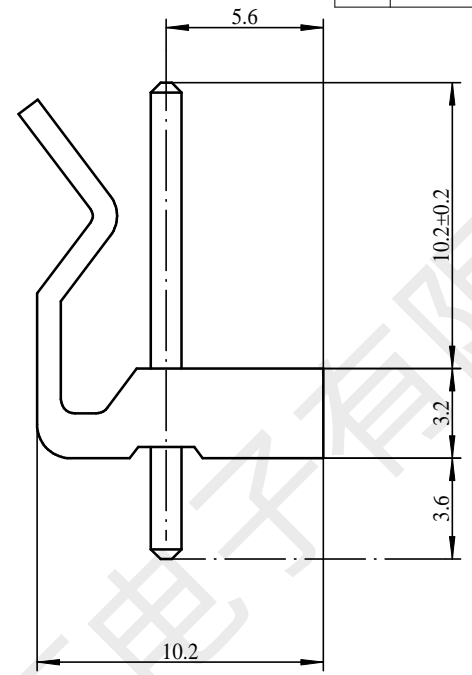
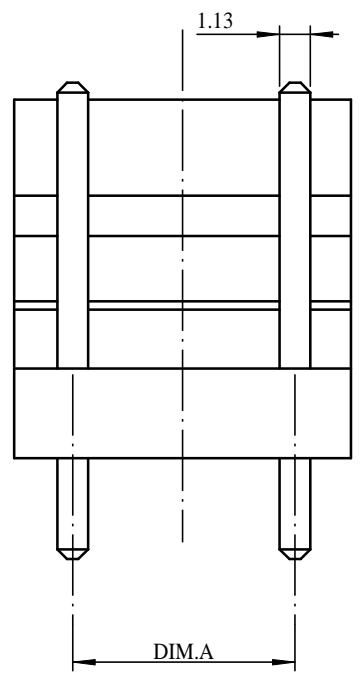
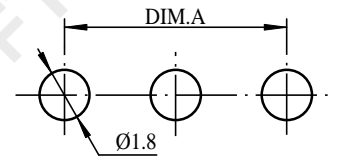
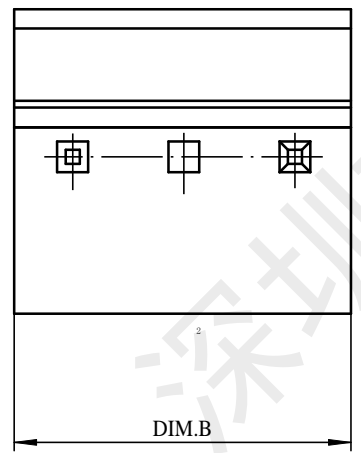


REV.	EC#	DESCRIPTION	DATE	DRAWN	CHECK	APPROVED
1.00		初版发行	2018-05-28			



MUMBER OF PINS	DIM A	DIM B
9P	31.68	35.64
8P	27.72	31.68
7P	23.76	27.72
6P	19.8	23.76
5P	15.84	19.8
4P	11.88	15.84
3P	7.92	11.88
2P	3.96	7.92



PCB LAYOUT

GENERAL TOLERANCES			
DIM	TOL	DIM	DEG
X.		X°	±3.00°
X.X	±0.35	X.X°	±2.00°
X.XX	±0.25	X.XX°	±1.00°
X.XXX	±0.15	X.XXX°	

技术要求:

- 1) 材质:见附表;
- 2) 电镀:见附表;
- 3) 塑件表面平整、光洁、无毛刺、气泡、烧焦、变形、浇口无拉伤、多料或缺料等不良现象;
- 4) 端子表面无氧化、电镀不良等现象。

适应基板厚度: 1.2mm~1.6mm  
 温度范围: -25℃~85℃  
 额定电压: 250V AC/DC  
 额定电流: 7A  
 接触电阻: <0.01Ω  
 绝缘电阻: >1000MΩ  
 耐压: 1500V AC/minute

2	PIN	n PCS	材质:黄铜,电镀:镀亮锡60u*MIN
1	Housing	1 PCS	材质:PA66 (UL94V-0),颜色:本色
NO.	NAME	Q'TY	DESCRIPTION

**深圳市韩下电子有限公司**

DRAW :	黄彬	2018-04-22	TITLE:	针座	DRAW NAME:	
DESIGN:			SERIES:	1501	HX CH3.96-2P ZZ	
CHECK:	张伟	2018-04-22	SERIES		DRAW NO.	
APPROVED	罗小春	2018-04-22	CUSTOMER DRAWING	REN: 1.00	SCALE	N/A
			UNIT:	mm	SHEET:	1/1