

Type LPA-07

In-Line Fuse Holder

1/4" x 1 1/4" (6.3 x 32mm) Fuses



www.optifuse.com

(619) 593-5050

Ratings:

Fuse Type: 1/4" x 1 1/4" (6.3 x 32mm)

Electrical Rating: 30A 32VDC

Body: Bakelite

Contacts: Brass

Standard Wire Sizes: #10 ~ #20 AWG

Standard Wire Colors: Red

Standard Body colors: Black

Standard Wire Length: 4 inches

Available in various wire gauges, lengths and colors.

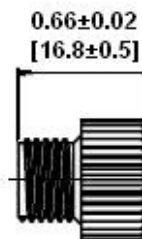
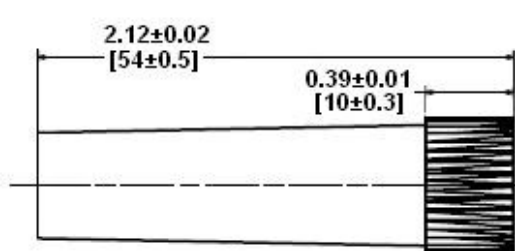
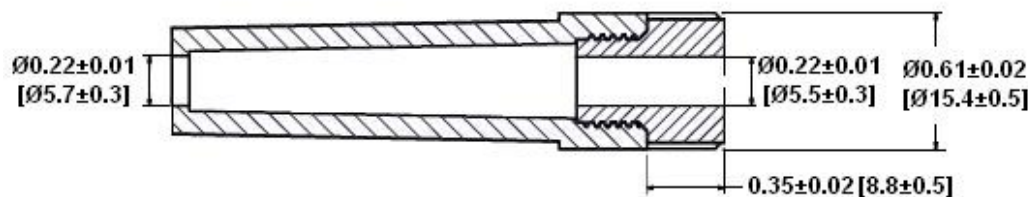
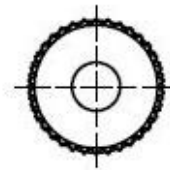
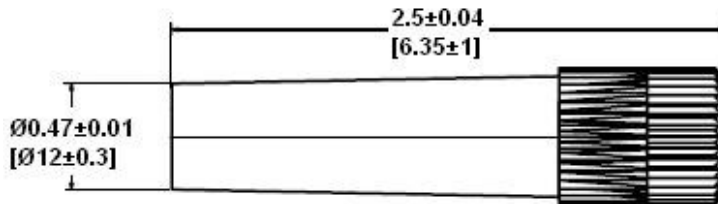
Contact factory for those not listed above.

Part number format

LPA-07B-##R

where ## = Wire gauge

Mechanical Dimensions: Inches [mm]



Warning:



-Operation beyond the specified maximum ratings or improper use may result in damage and possible electrical arcing and/or flame.

-Avoid contact of device with chemical solvent. Prolonged contact may damage the device performance.