

NOTES:

1. ALL DIMENSIONS ARE REFERENCE.

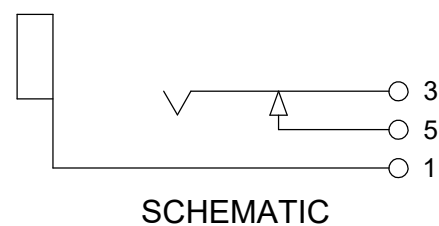
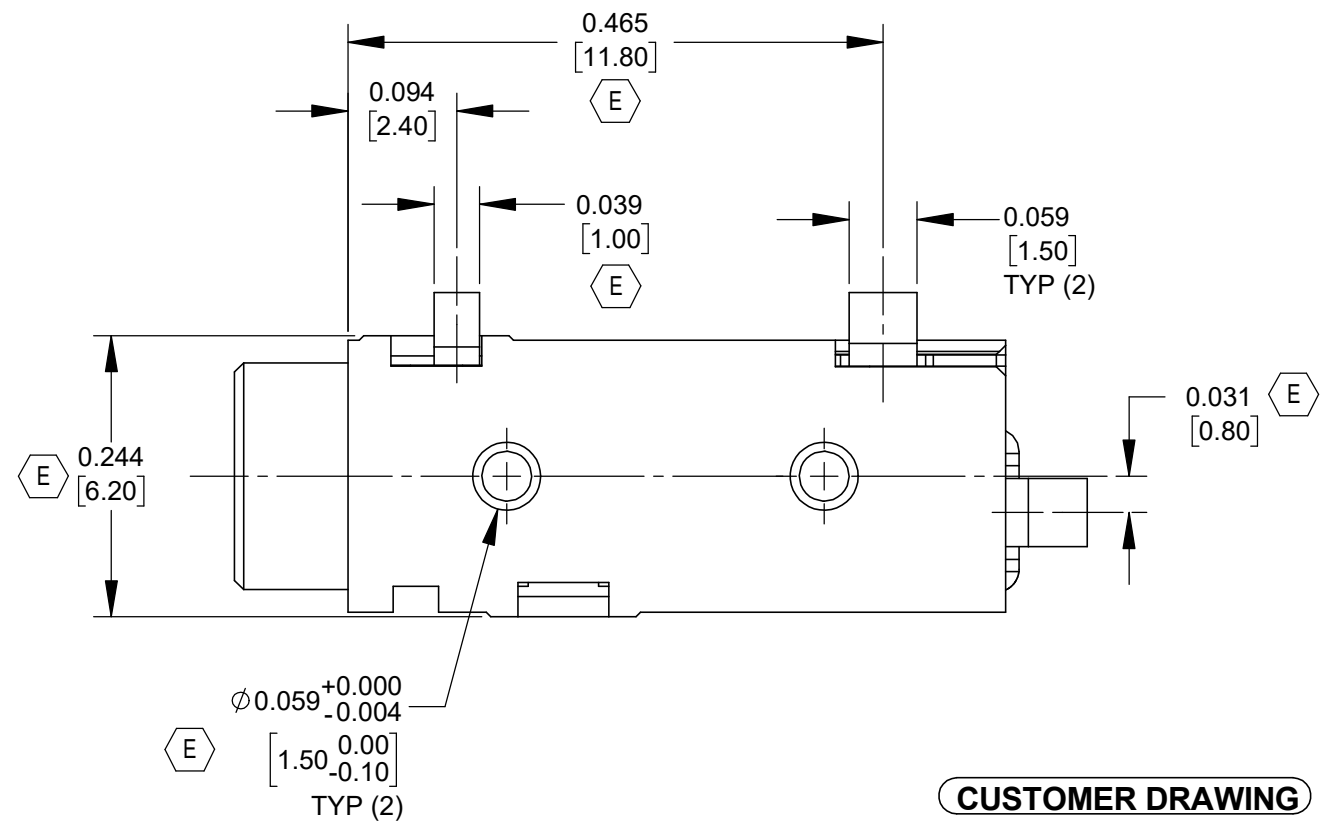
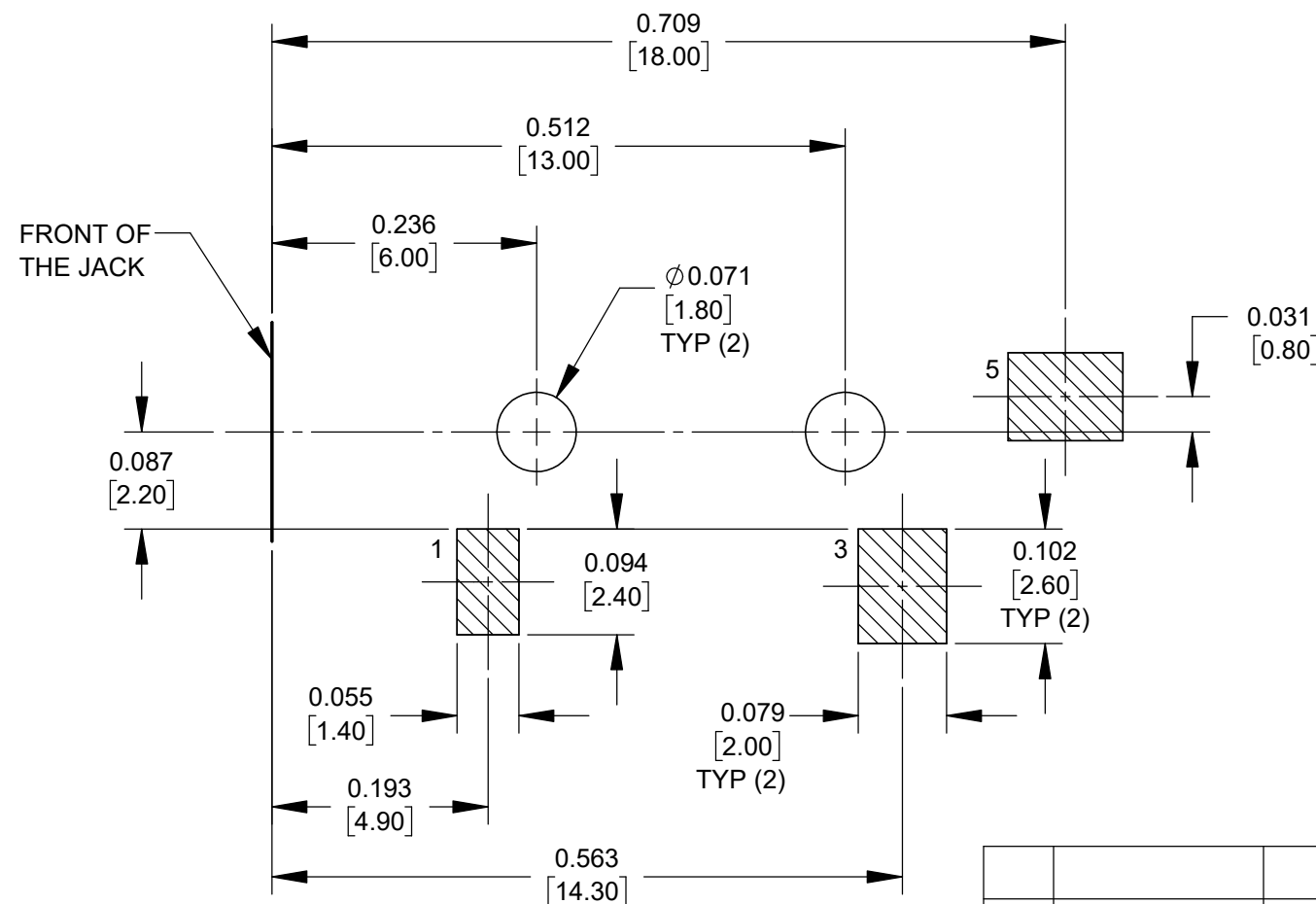
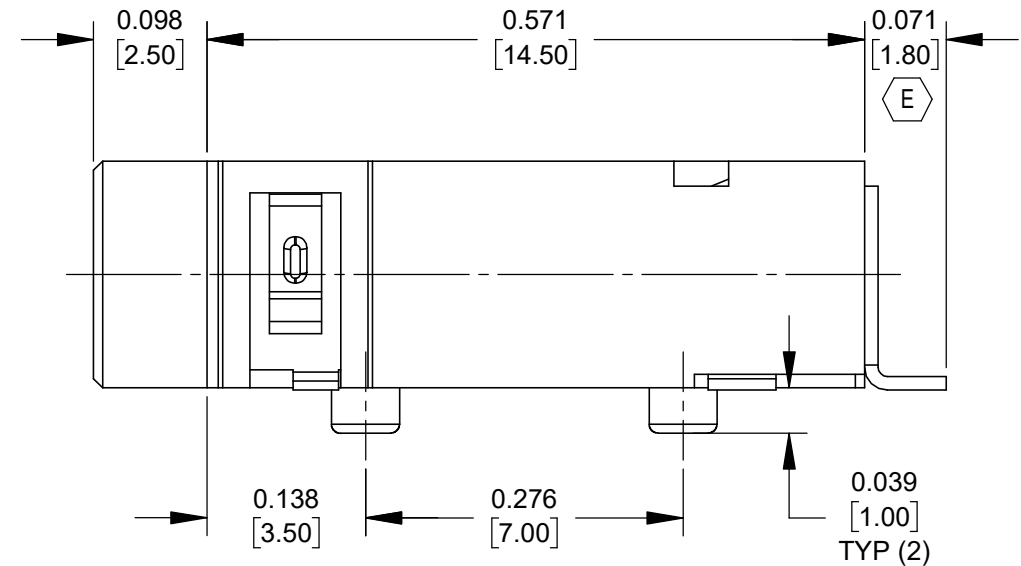
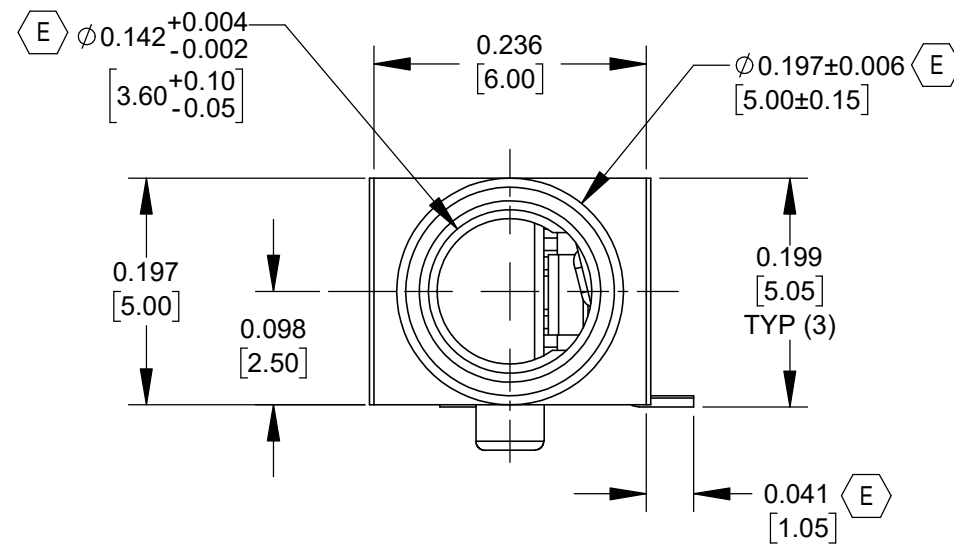
E 2. MATERIALS:

HOUSING: THERMOPLASTIC, BLACK

TERMINALS: COPPER ALLOY, GOLD FLASH

3. SUPPLIED ON TAPE AND REEL, SEE SHEET 2.

4. THIS PRODUCT IS RoHS COMPLIANT.



E PCB LAYOUT
COMPONENT SIDE
TOLERANCE: ±0.002 [±0.05]

CUSTOMER DRAWING

REV	ECO NUMBER	DATE	BY	APVD
E	28625	09-28-23	PC	TJK
D	27337	7-30-14	TO	TJK
C	26972	6-20-12	TO	TJK
B	26514	3-25-10	RS	TJK
A	25182	1-13-06	JL	GG

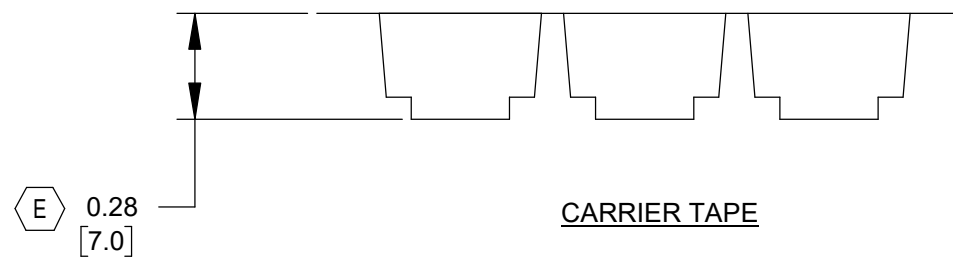
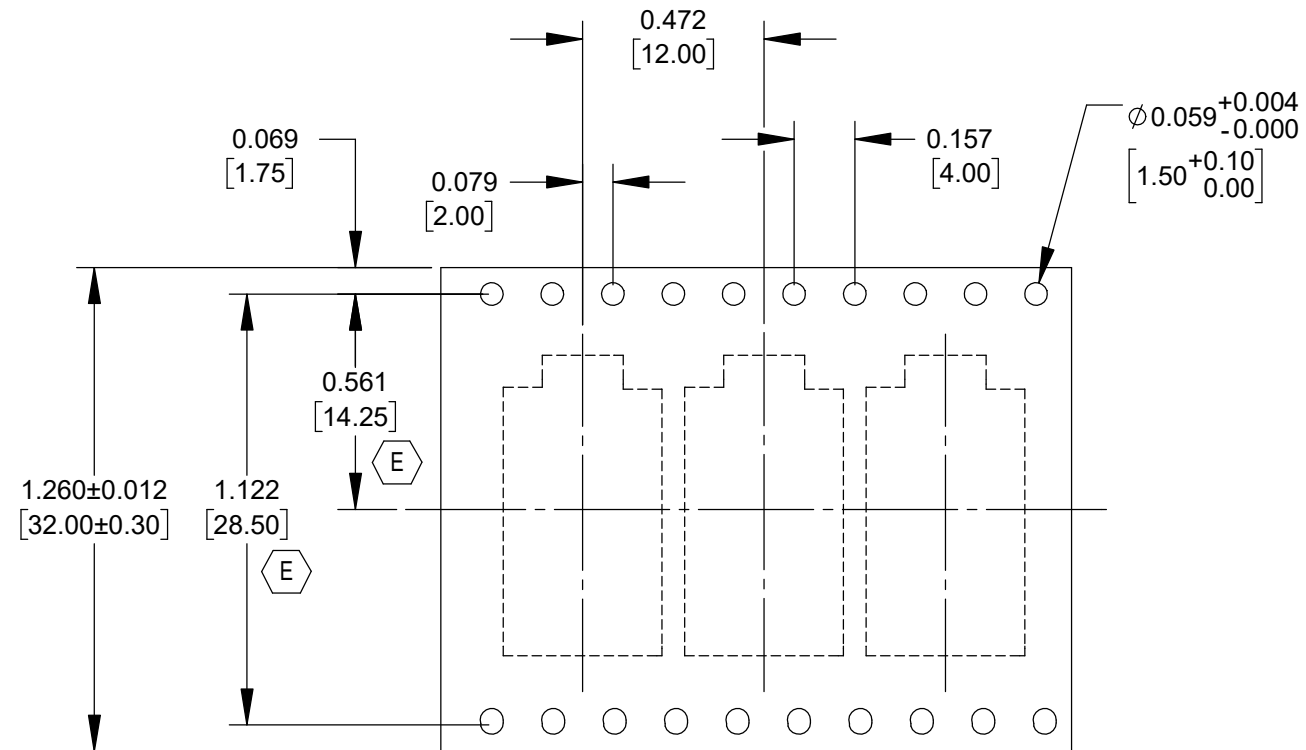
UNLESS OTHERWISE SPECIFIED				
1. ALL DIMENSIONS IN INCHES [mm]				
- TWO PLACE DECIMALS ±0.02 [0.5]				
- THREE PLACE DECIMALS ±0.005 [0.13]				
DO NOT SCALE DRAWING				

THIS DRAWING DESCRIBES A DESIGN CONSIDERED PROPRIETARY IN NATURE, DEVELOPED AND MANUFACTURED BY SWITCHCRAFT INC. AND IS RELEASED ON A CONFIDENTIAL BASIS FOR IDENTIFICATION PURPOSES ONLY.									
SIZE	WIDTH	MULT	LBS/M	TEMPER					
					MATERIAL SPEC No.				
					Switchcraft®				
					SHEET 1 OF 2				
					PART No. 35RASMT2AHNTRX				
					REV E				

SolidWorks CAD File **B**

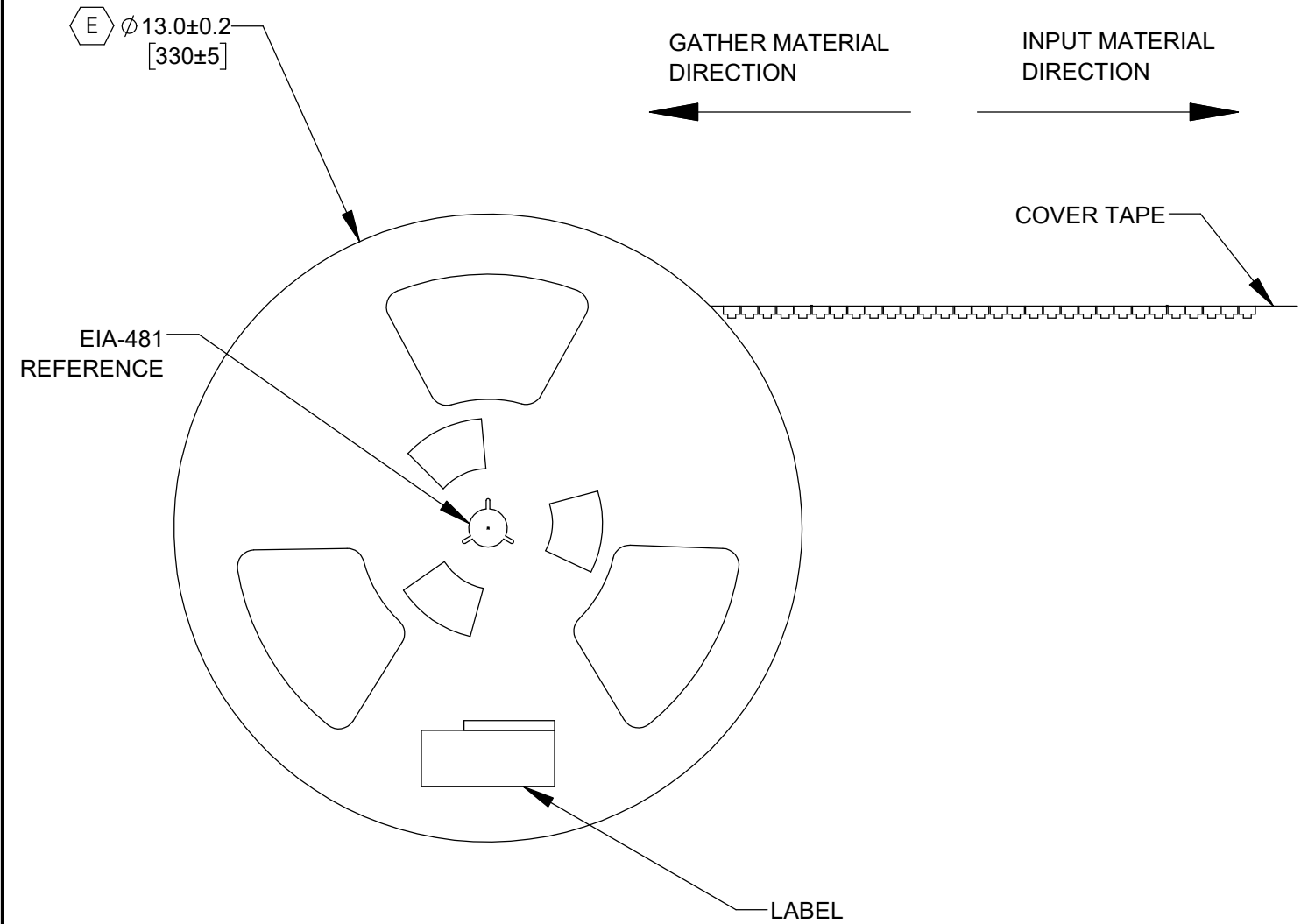
A: CARRIER SIZE

- 1. DETAIL SIZE REFERENCES: EIA-481
- 2. SPECIFICATIONS: 32 MM X 12 MM



B: REEL SIZE

- 1. QUANTITY: 700 PCS/REEL
- 2. MATERIAL: THERMOPLASTIC
- 3. 8 EMPTY AT START OF REEL



CUSTOMER DRAWING

SCALE NONE	Switchcraft [®]	
DATE DRAWN 13-Jan-06		
DRAWN BY JL	PART No. 35RASMT2AHNTRX	REV E