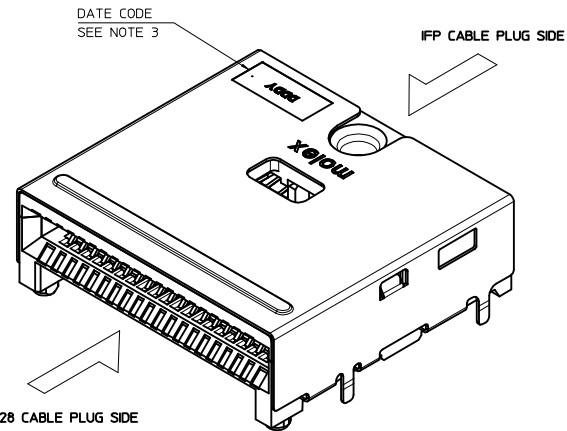
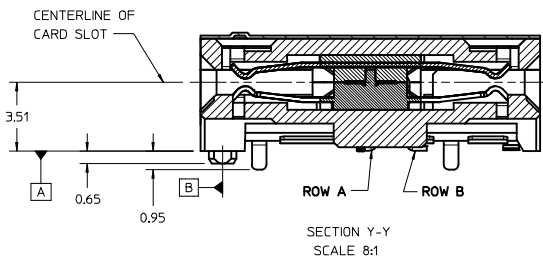
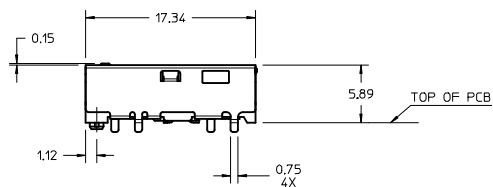


DETAIL 5
SCALE 10:1

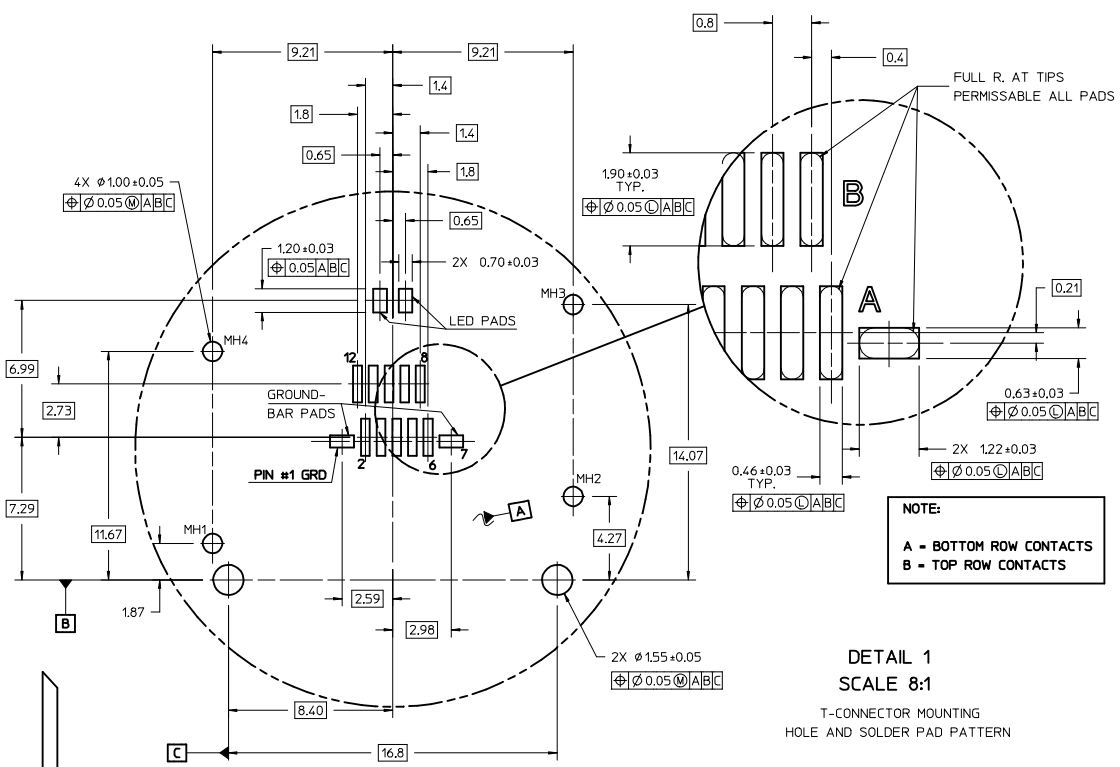
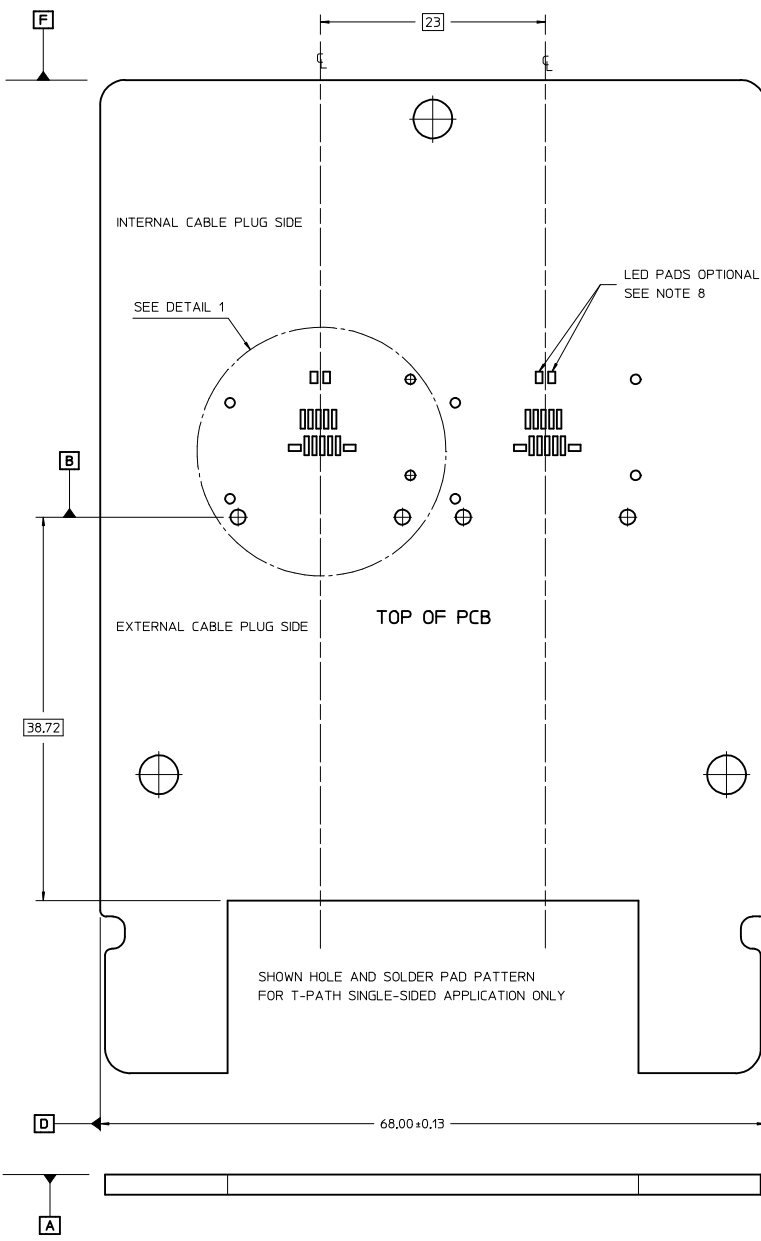


172604-0002
HARDTOP
T-PATH CONNECTOR
ASSEMBLY

NOTES:

- MATERIAL - HOUSING - HALOGEN FREE GLASS FILLED LCP
UL 94V-0, COLOR: BLACK
SHELLS: 0.15 THICK NICKEL-SILVER ALLOY, UNPLATED
TERMINALS - HIGH PERFORMANCE COPPER ALLOY
- PLATING - CONTACT AREA - 0.76 μm MIN GOLD OVER 2.54 μm NICKEL
SOLDER AREA - 2.54 - 5.09 μm TIN OVER 2.54 μm MIN NICKEL
- DATE CODE: 4 DIGIT (3 DIGIT DAY, 1 DIGIT YEAR)
- CONFORMS TO PRODUCT SPECIFICATION: PS-172604-001
- CONNECTOR ASSEMBLY IS ROHS AND LOW HALOGEN COMPLIANT
- DIMENSIONS AND TOLERANCES CONFORM TO AMSE Y14.5 2009
- LED IS OPTIONAL. RECOMMENDED LED PACKAGE: 1608/0603 0.4mm HIGH MAX.
- PACKAGING: TAPE AND REEL. SEE SHEET 6
- CONNECTOR TO BE USED IN CONJUNCTION WITH EMI CAGES SHOWN ON DRAWING SD-172604-2100
- IFF CABLE PLUG TO HAVE 1.0mm THICK PCB.

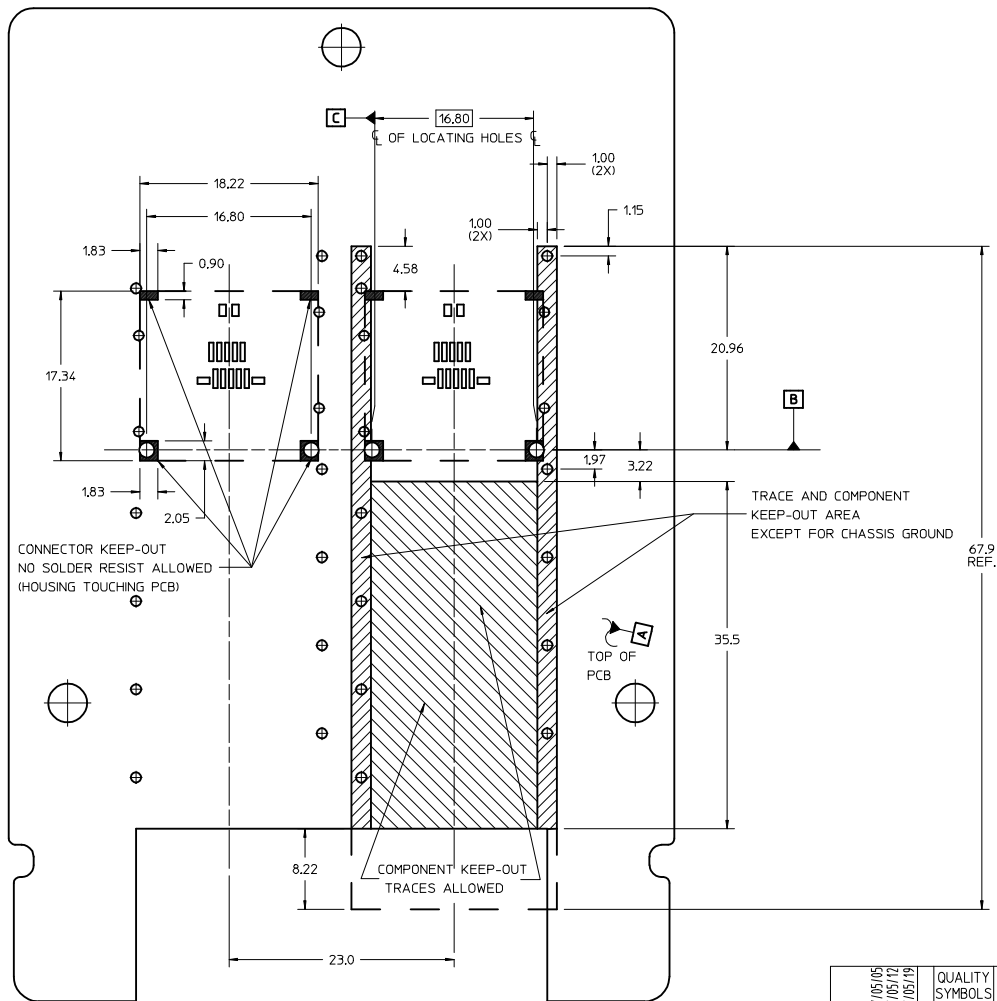
ADD 132 DIM EC NO. UCFP2017-2046 DRAWN BY: MWOLFE CHYKBARKER APPR: SMILLER 2017/05/05 2017/05/12 2017/05/19	QUALITY SYMBOLS ∇=0 ∇=1 ∇=0	GENERAL TOLERANCES (UNLESS SPECIFIED)		DIMENSION STYLE MM ONLY		SCALE 4:1	DESIGN UNITS METRIC	THIRD ANGLE PROJECTION	
		4 PLACES ± --- ± ---	mm	INCH	DRAWN BY MWOLFE	DATE 2016/07/01	TITLE T-PATH CONNECTOR HARDTOP ASSEMBLY		
		3 PLACES ± --- ± ---	ANGULAR ±1/2°		APPROVED BY SMILLER	DATE 2017/05/19	MATERIAL NO. 172604-0002		
		2 PLACES ± 0.13 ± ---	DRAFT WHERE APPLICABLE MUST REMAIN WITHIN DIMENSIONS		DOCUMENT NO. SD-172604-0002		SHEET NO. 1 OF 4		



PCB LAYOUT FOR T-PATH CONNECTOR MOUNTING

FRONT OF CONNECTOR
(PLUG MODULE SIDE)

SEE SHEET 1 IEC NO: UCP2017-2046 DRAWN BY: MWOLFE 2017/05/05 CHECKED BY: CHYD BARKER 2017/05/12 APPR: SMILLER 2017/05/19	QUALITY SYMBOLS	GENERAL TOLERANCES (UNLESS SPECIFIED)	DIMENSION STYLE	SCALE	DESIGN UNITS	THIRD ANGLE PROJECTION	
	$\nabla=0$	mm INCH	MM ONLY	4:1	METRIC		
	$\nabla=0$	4 PLACES ± --- ± ---	DRAWN BY: MWOLFE DATE: 2016/07/01	TITLE: T-PATH CONNECTOR HARDTOP ASSEMBLY			
	$\nabla=0$	3 PLACES ± --- ± ---	CHECKED BY: DATE:	MATERIAL NO: 472604-0002 DOCUMENT NO: SD-172604-0002			
	2 PLACES ± 0.13 ± ---	APPROVED BY: SMILLER DATE: 2017/05/19	SHEET NO. 2 OF 4				
	1 PLACE ± 0.25 ± ---		SIZE D THIS DRAWING CONTAINS INFORMATION THAT IS PROPRIETARY TO MOLEX INCORPORATED AND SHOULD NOT BE USED WITHOUT WRITTEN PERMISSION				
	0 PLACE ± --- ± ---	ANGULAR ± 1/2°					
		DRAFT WHERE APPLICABLE MUST REMAIN WITHIN DIMENSIONS					

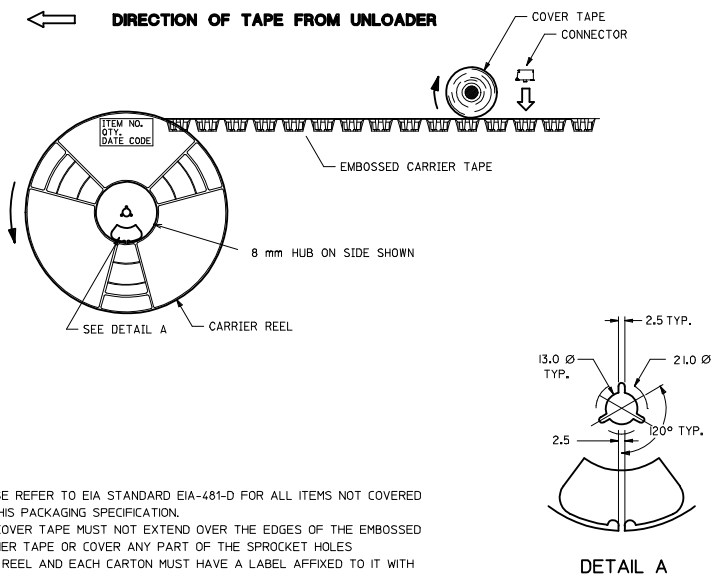


T-PATH CONNECTOR AND EMI CAGE
KEEP-OUT ZONES

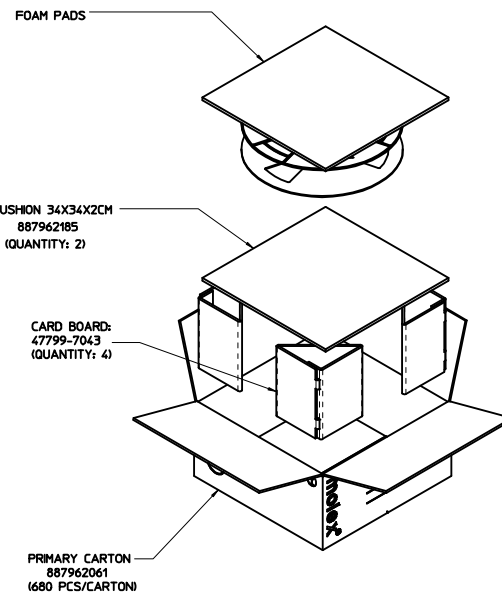
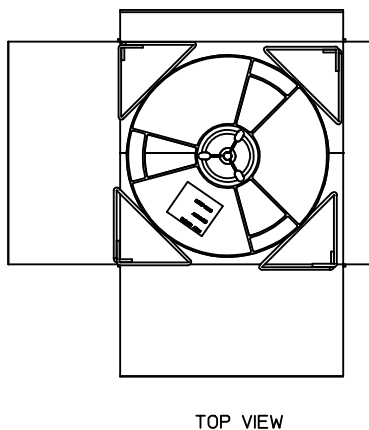
SEE SHEET 1 IEC NO: UCP2017-2046 DRAWN BY: MWOLFE 2017/05/05 CHECKED BY: CHYD BARKER 2017/05/12 APPR: SMILLER 2017/05/19 REV DESCRIPTION	QUALITY SYMBOLS ▽=0 ▽=0 ▽=0		GENERAL TOLERANCES (UNLESS SPECIFIED) <table border="1"> <thead> <tr> <th></th> <th>mm</th> <th>INCH</th> </tr> </thead> <tbody> <tr> <td>4 PLACES</td> <td>±0.13</td> <td>±0.005</td> </tr> <tr> <td>3 PLACES</td> <td>±0.25</td> <td>±0.010</td> </tr> <tr> <td>2 PLACES</td> <td>±0.38</td> <td>±0.015</td> </tr> <tr> <td>1 PLACE</td> <td>±0.51</td> <td>±0.020</td> </tr> <tr> <td>0 PLACE</td> <td>±0.64</td> <td>±0.025</td> </tr> </tbody> </table>			mm	INCH	4 PLACES	±0.13	±0.005	3 PLACES	±0.25	±0.010	2 PLACES	±0.38	±0.015	1 PLACE	±0.51	±0.020	0 PLACE	±0.64	±0.025	DIMENSION STYLE MM ONLY		SCALE 4:1		DESIGN UNITS METRIC		THIRD ANGLE PROJECTION	
		mm	INCH																											
	4 PLACES	±0.13	±0.005																											
	3 PLACES	±0.25	±0.010																											
2 PLACES	±0.38	±0.015																												
1 PLACE	±0.51	±0.020																												
0 PLACE	±0.64	±0.025																												
DRAWN BY: MWOLFE 2016/07/01 CHECKED BY: DATE			APPROVED BY: SMILLER 2017/05/19 DATE		MATERIAL NO: 172604-0002		DOCUMENT NO: SD-172604-0002		SHEET NO. 3 OF 4																					
DRAFT WHERE APPLICABLE MUST REMAIN WITHIN DIMENSIONS			ANGULAR ±1/2°		molex																									
THIS DRAWING CONTAINS INFORMATION THAT IS PROPRIETARY TO MOLEX INCORPORATED AND SHOULD NOT BE USED WITHOUT WRITTEN PERMISSION																														

CKT SIZE **	PARTS PER REEL	REELS PER CARTON	PARTS PER CARTON	TRAILING EMPTY POCKETS **	LEADING EMPTY POCKETS **
28	300	1	300	20	20

** SEE NOTE 11

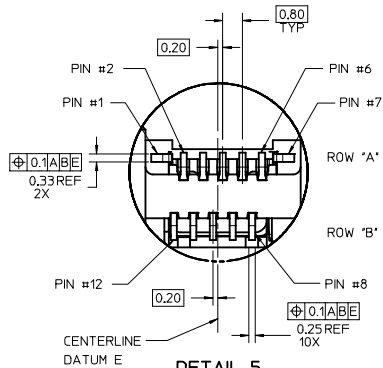
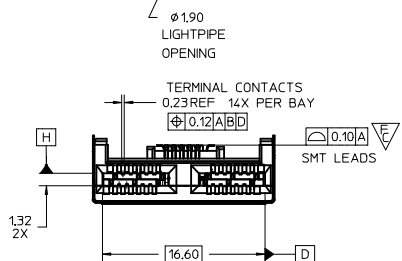
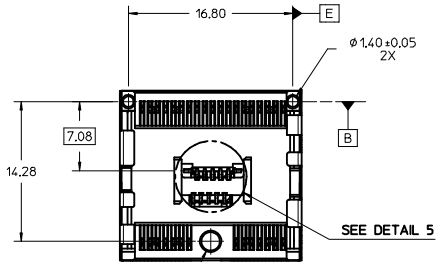
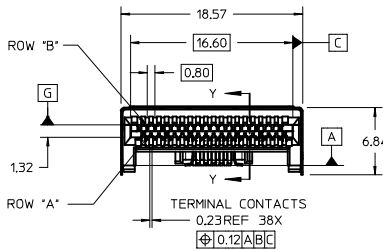
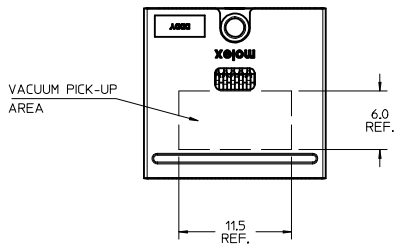


- NOTES:
- PLEASE REFER TO EIA STANDARD EIA-481-D FOR ALL ITEMS NOT COVERED BY THIS PACKAGING SPECIFICATION.
 - THE COVER TAPE MUST NOT EXTEND OVER THE EDGES OF THE EMBOSSED CARRIER TAPE OR COVER ANY PART OF THE SPROCKET HOLES
 - EACH REEL AND EACH CARTON MUST HAVE A LABEL AFFIXED TO IT WITH THE FOLLOWING INFORMATION: CONNECTOR ITEM NO., QUANTITY, AND DATE CODE.
 - ALL PACKAGING COMPONENT MATERIALS (COVER TAPE, EMBOSSED CARRIER TAPE, AND CARRIER REEL) ARE 100% ANTI-STATIC
 - ABSOLUTELY NO TAPE SPLICES ARE PERMITTED ON FINISHED REELS.
 - PACKAGING MATERIALS:
 COVER TAPE - COMPOSITE OF POLYETHYLENE TEREPHTHALATE (PET), POLYETHYLENE (PE), AND POLYFILM (PEF)
 EMBOSSED CARRIER TAPE - POLYSTYRENE (PS)
 CARRIER REEL - POLYSTYRENE (PS)
 - THE COVER TAPE MUST HAVE A PEEL STRENGTH BETWEEN 10 AND 60 GRAMS PER SIDE WHEN PULLED OPPOSITE THE DIRECTION OF THE CARRIER TAPE TRAVEL SUCH THAT THE COVER TAPE MAKES AN ANGLE OF 0°/15° AS SHOWN IN DETAIL B.
 - THERE ARE TO BE NO SKIPS IN THE COVER TAPE BOND.
 - REFER TO PACKAGING MATRIX FOR NUMBER OF CONNECTORS PER REEL.
 - MUST HAVE A MINIMUM OF 3/4 mm OF CARRIER TAPE TO COVER SLOTS IN HUB.
 - TRAILING EMPTY POCKETS TO BE LOCATED AT THE HUB OF THE CARRIER REEL AND LEADING EMPTY POCKETS TO BE AT THE OUTSIDE EDGE OF THE CARRIER REEL.
 - CARTON MUST BE PACKED TIGHT WITH AT LEAST FOUR 5 SHEETS OF PINK FOAM TO ELIMINATE ANY HEADROOM.
 - ELV AND ROHS COMPLIANT

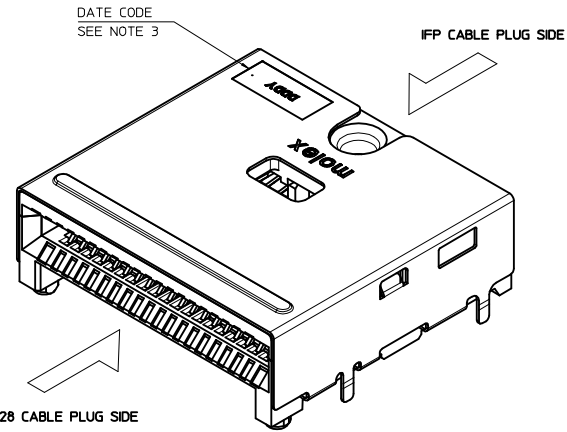
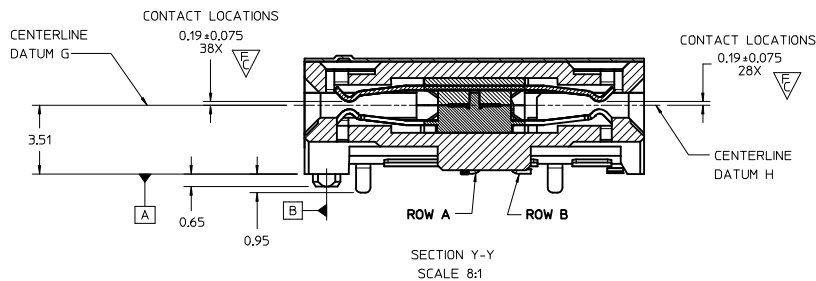
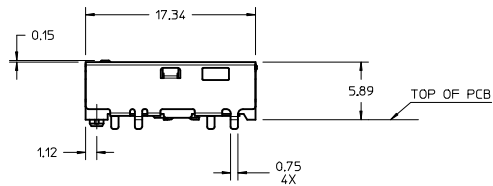


T-PATH CONNECTOR TAPE AND REEL PACKAGING INFORMATION

SEE SHEET 1 IEC NO: UCP2017-2046 DRAWN BY: MWOLFE 2017/05/05 CHECKED BY: CHYKOBARKER 2017/05/12 APPR: SMILLER 2017/05/19 REV DESCRIPTION	QUALITY SYMBOLS	GENERAL TOLERANCES (UNLESS SPECIFIED)	DIMENSION STYLE	SCALE	DESIGN UNITS	THIRD ANGLE PROJECTION	
	▽=0	mm INCH	MM ONLY	4:1	METRIC	☉	
	▽=0	4 PLACES ± --- ± ---	DRAWN BY DATE	TITLE			
	▽=0	3 PLACES ± --- ± ---	2016/07/01	T-PATH CONNECTOR HARDTOP ASSEMBLY			
	2 PLACES ± 0.13 ± ---	CHECKED BY DATE	molex				
	1 PLACE ± 0.25 ± ---	2017/05/19	SD-172604-0002				
	0 PLACE ± --- ± ---	APPROVED BY DATE	4 OF 4				
	ANGULAR ±1/2°	2017/05/19	THIS DRAWING CONTAINS INFORMATION THAT IS PROPRIETARY TO MOLEX INCORPORATED AND SHOULD NOT BE USED WITHOUT WRITTEN PERMISSION				
	DRAFT WHERE APPLICABLE MUST REMAIN WITHIN DIMENSIONS						



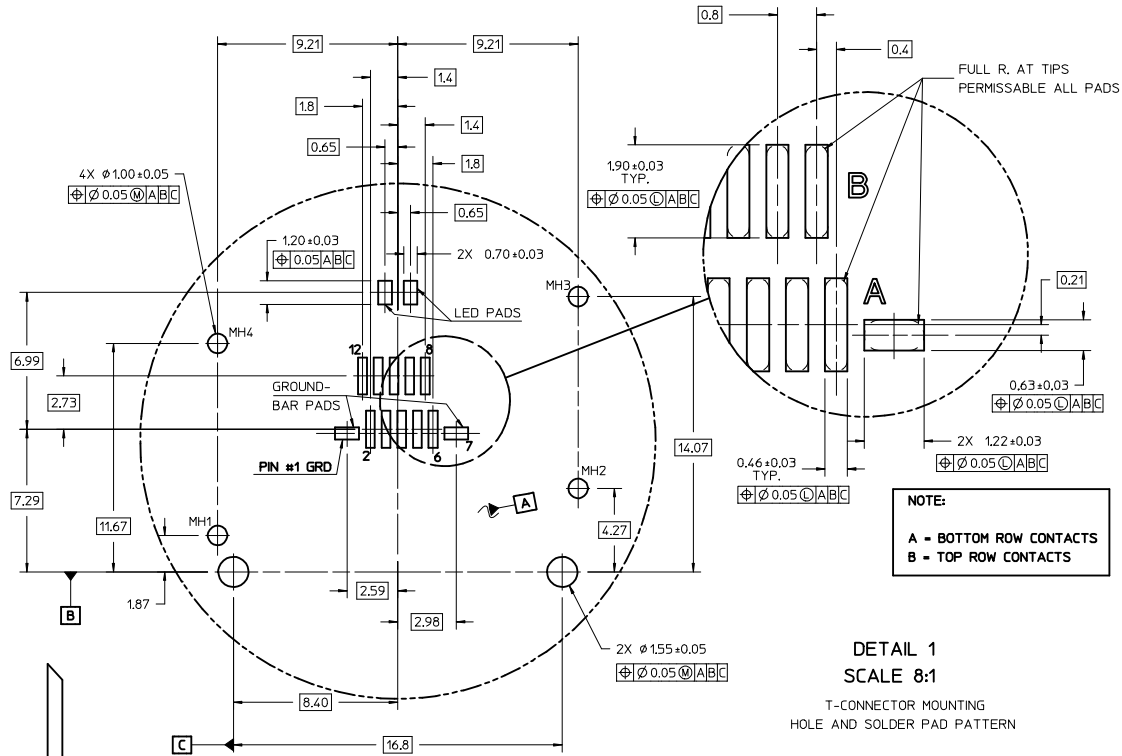
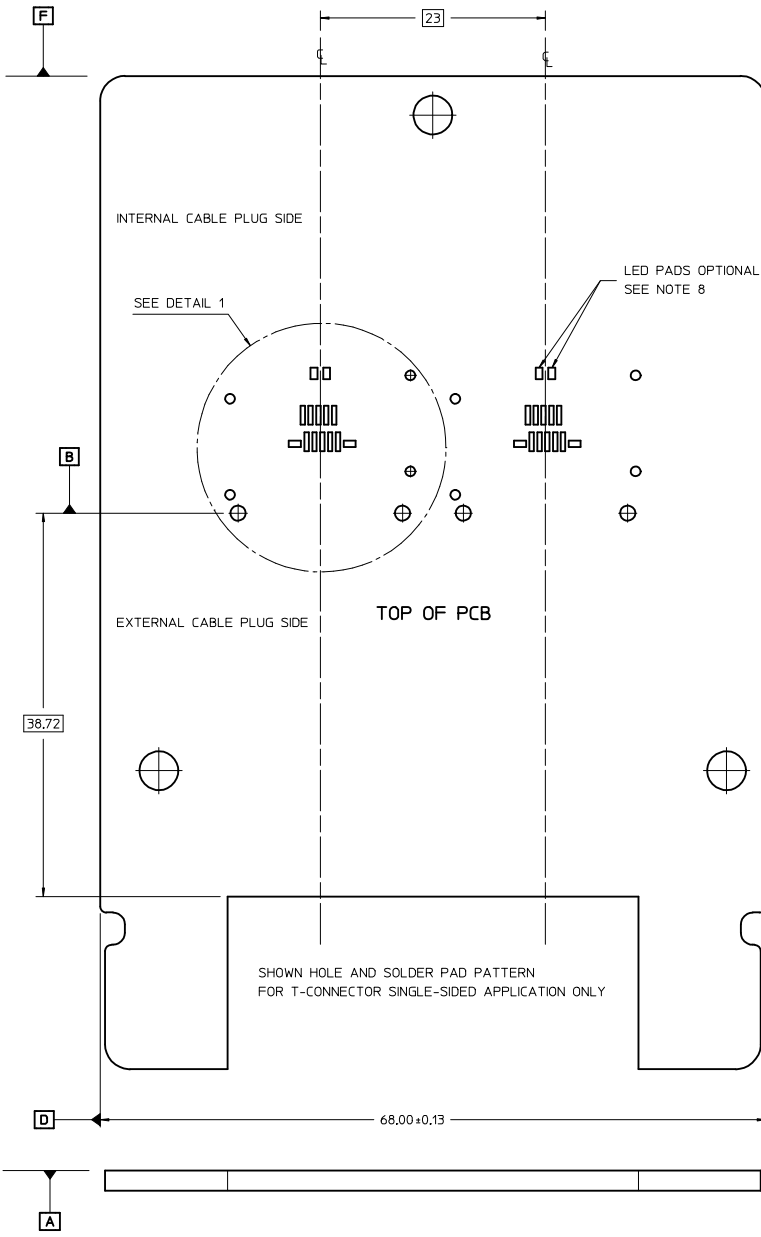
DETAIL 5
SCALE 10:1



NOTES:

- MATERIAL -
HOUSING - HALOGEN FREE GLASS FILLED, LCP
UL 94V-0, COLOR: BLACK
SHELLS: 0.15 THICK NICKEL-SILVER ALLOY, UNPLATED
TERMINALS - HIGH PERFORMANCE COPPER ALLOY
- PLATING -
CONTACT AREA - 0.76 μm MIN GOLD OVER 2.54 μm NICKEL
SOLDER AREA - 2.54 -5.09 μm TIN OVER 2.54 μm MIN NICKEL
- DATE CODE: 4 DIGIT (3 DIGIT DAY, 1 DIGIT YEAR)
- CONFORMS TO PRODUCT SPECIFICATION: RESTRICTED-PS-172604-0001
- CONNECTOR ASSEMBLY IS RoHS AND LOW HALOGEN COMPLIANT
- DIMENSIONS AND TOLERANCES CONFORM TO AMSE Y14.5 2009
- LED IS OPTIONAL, RECOMMENDED LED PACKAGE: 1608/0603 0.4mm HIGH MAX.
- PACKAGING: TAPE AND REEL, PER PK-172604-9001.
- CONNECTOR TO BE USED IN CONJUNCTION WITH EMI CAGES SHOWN ON DRAWING SD-172604-2100
- IFP CABLE PLUG TO HAVE 1.0mm THICK PCB.

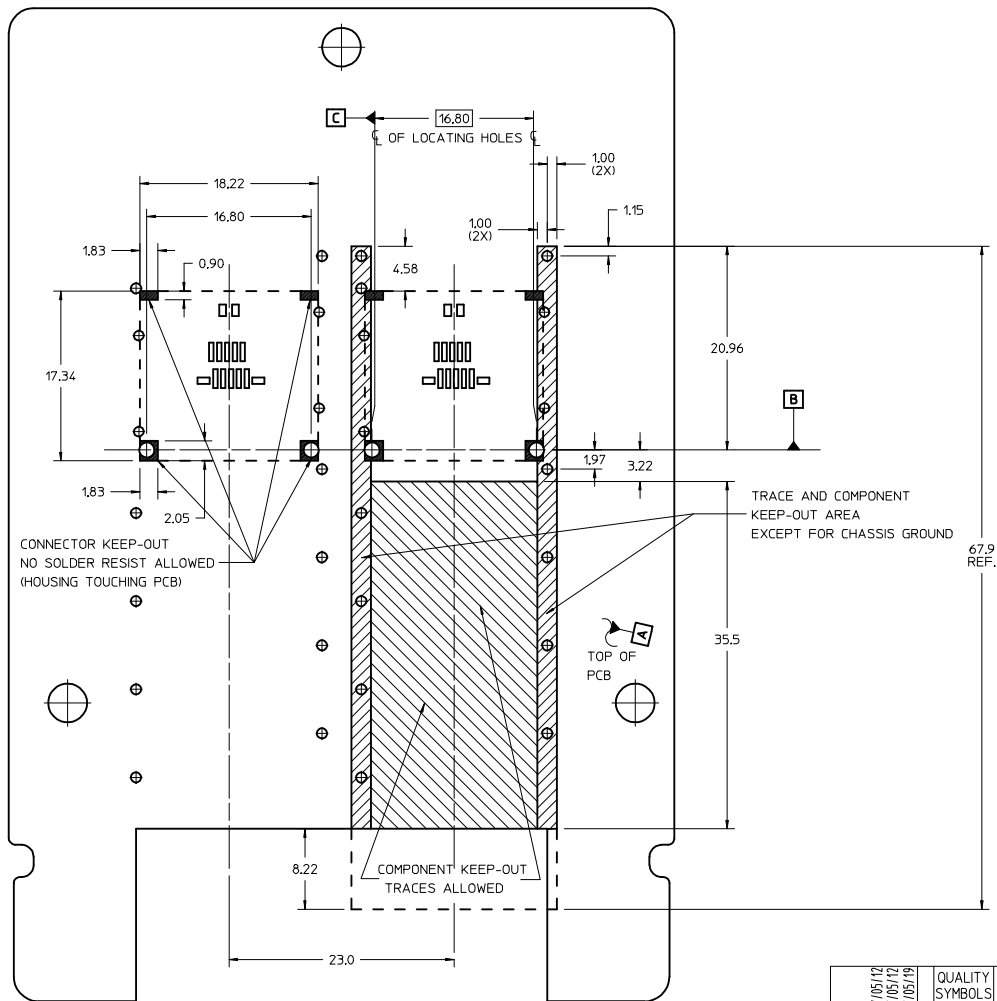
UPDATE PACKAGING IEC NO. UCP2017-2046 DRAWN BY MWOLFE 2017/05/12 CHECKED BY CHYKBARKER 2017/05/12 APPR: SMILLER 2017/05/19 REV DESCRIPTION	QUALITY SYMBOLS	GENERAL TOLERANCES (UNLESS SPECIFIED)	DIMENSION STYLE	SCALE	DESIGN UNITS	THIRD ANGLE PROJECTION	
	▽=0	mm INCH	MM ONLY	4:1	METRIC	☉	
	▽=3	4 PLACES ± --- ± --- 3 PLACES ± --- ± --- 2 PLACES ± 0.13 ± --- 1 PLACE ± 0.25 ± --- 0 PLACE ± --- ± ---	DRAWN BY DATE MWOLFE 2017/01/05	TITLE	T-PATH CONNECTOR HARDTOP ASSEMBLY		
	▽=0	ANGULAR ±1/2° DRAFT WHERE APPLICABLE MUST REMAIN WITHIN DIMENSIONS	CHECKED BY DATE SMILLER 2017/05/19	MATERIAL NO. 172604-0003	DOCUMENT NO. SD-172604-0003	SHEET NO. 1 OF 3	



PCB LAYOUT FOR T-PATH CONNECTOR MOUNTING

FRONT OF CONNECTOR
(PLUG MODULE SIDE)

SEE SHEET 1 IEC NO: UCP2017-2046 DRAWN BY: MWOLFE 2017/05/12 CHECKED BY: CHYD BARKER 2017/05/12 APPR: SMILLER 2017/05/19	QUALITY SYMBOLS	GENERAL TOLERANCES (UNLESS SPECIFIED)	DIMENSION STYLE	SCALE	DESIGN UNITS	THIRD ANGLE PROJECTION
	$\nabla=0$	mm INCH	MM ONLY	4:1	METRIC	
	$\nabla=0$	4 PLACES ± --- ± ---	DRAWN BY DATE	TITLE		
	$\nabla=0$	3 PLACES ± --- ± ---	MWOLFE 2017/01/05	T-PATH CONNECTOR HARDTOP ASSEMBLY		
$\nabla=0$	2 PLACES ± 0.13 ± ---	CHECKED BY DATE	MATERIAL NO. DOCUMENT NO.			
$\nabla=0$	1 PLACE ± 0.25 ± ---	APPROVED BY DATE	472604-0003		SD-172604-0003	
$\nabla=0$	0 PLACE ± --- ± ---	SMILLER 2017/05/19	SIZE D		SHEET NO. 2 OF 3	
DRAFT WHERE APPLICABLE MUST REMAIN WITHIN DIMENSIONS		THIS DRAWING CONTAINS INFORMATION THAT IS PROPRIETARY TO MOLEX INCORPORATED AND SHOULD NOT BE USED WITHOUT WRITTEN PERMISSION				



T-PATH CONNECTOR AND EMI CAGE
KEEP-OUT ZONES

SEE SHEET 1 IEC NO: UCP2017-2046 DRAWN BY: MWOLFE 2017/05/12 CHECKED BY: CHYD BARKER 2017/05/12 APPR: SMILLER 2017/05/19 REV DESCRIPTION	QUALITY SYMBOLS ▽=0 ▽=0 ▽=0		GENERAL TOLERANCES (UNLESS SPECIFIED) <table border="1"> <thead> <tr> <th></th> <th>mm</th> <th>INCH</th> </tr> </thead> <tbody> <tr> <td>4 PLACES</td> <td>±0.13</td> <td>±0.005</td> </tr> <tr> <td>3 PLACES</td> <td>±0.25</td> <td>±0.010</td> </tr> <tr> <td>2 PLACES</td> <td>±0.50</td> <td>±0.020</td> </tr> <tr> <td>1 PLACE</td> <td>±1.00</td> <td>±0.040</td> </tr> <tr> <td>0 PLACE</td> <td>±2.00</td> <td>±0.080</td> </tr> </tbody> </table>			mm	INCH	4 PLACES	±0.13	±0.005	3 PLACES	±0.25	±0.010	2 PLACES	±0.50	±0.020	1 PLACE	±1.00	±0.040	0 PLACE	±2.00	±0.080	DIMENSION STYLE MM ONLY		SCALE 4:1		DESIGN UNITS METRIC		THIRD ANGLE PROJECTION	
		mm	INCH																											
4 PLACES	±0.13	±0.005																												
3 PLACES	±0.25	±0.010																												
2 PLACES	±0.50	±0.020																												
1 PLACE	±1.00	±0.040																												
0 PLACE	±2.00	±0.080																												
DRAFT WHERE APPLICABLE MUST REMAIN WITHIN DIMENSIONS			MATERIAL NO. 172604-0003		DATE 2017/05/19		TITLE T-PATH CONNECTOR HARDTOP ASSEMBLY		DOCUMENT NO. SD-172604-0003																					

SHEET NO.
3 OF 3

THIS DRAWING CONTAINS INFORMATION THAT IS PROPRIETARY TO MOLEX INCORPORATED AND SHOULD NOT BE USED WITHOUT WRITTEN PERMISSION