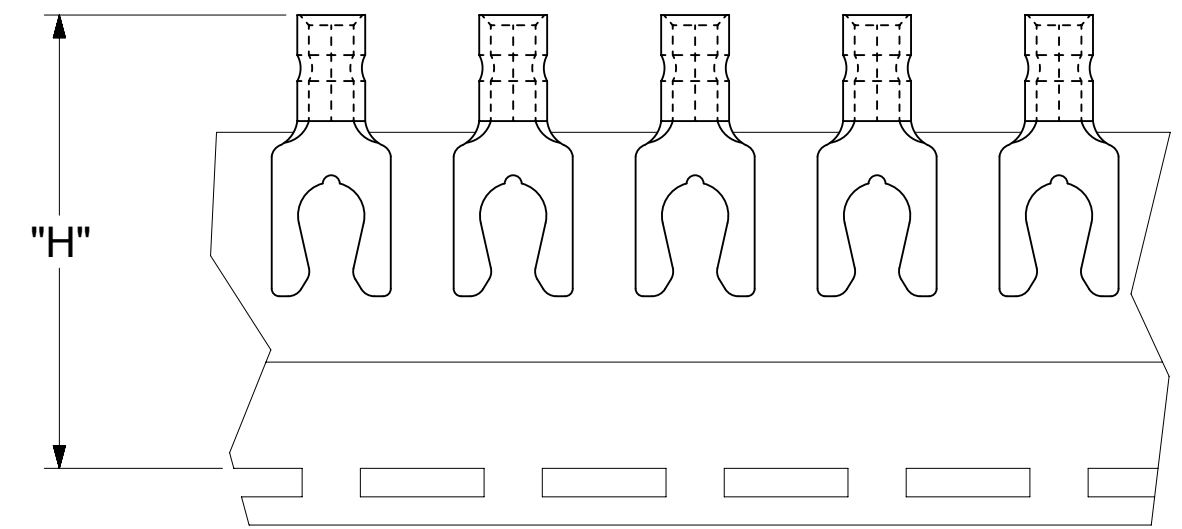
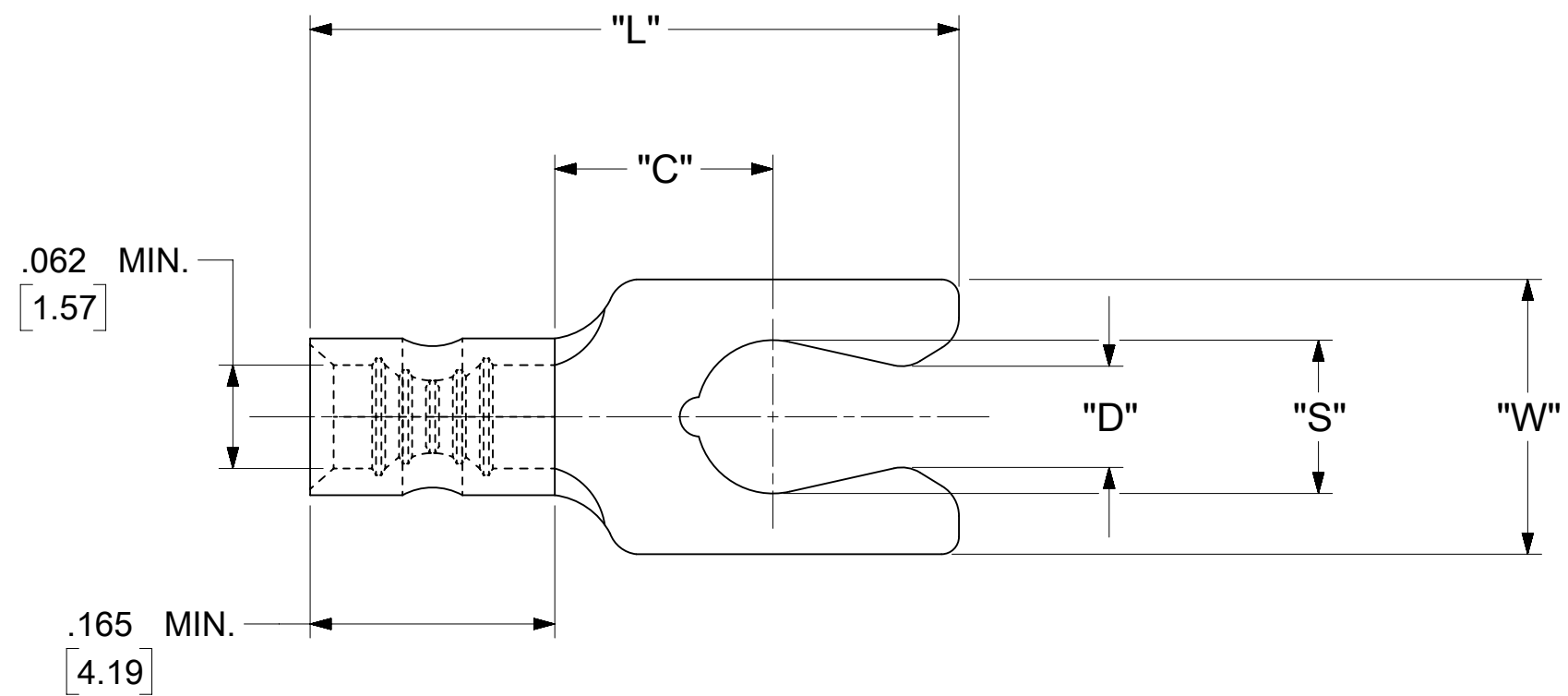


LOOSE PIECE		TAPE MOUNTED		SPECIFICATIONS						
MATERIAL NUMBER	ENGINEERING NUMBER	MATERIAL NUMBER	ENGINEERING NUMBER	STUD SIZE	"S" ±.005 [0.13]	"W" ±.010 [0.25]	"C" MIN.	"L" MAX.	"D" ±.005 [0.13]	"H"
190980023	AA-1714-08	190980080	AA-1714-08T	8	.173 [4.39]	.310 [7.87]	.261 [6.63]	.646 [16.41]	.139	1.155 [29.34]
190980024	AA-1715-10	190980081	AA-1715-10T	10	.198 [5.03]	.330 [8.38]	.261 [6.63]	.694 [17.63]	.156	1.155 [29.34]



PARTS ON TAPE

NOTES:

- MATERIAL: TERMINAL: COPPER (STOCK THICKNESS $.028 \frac{+.001}{-.000}$ [0.71]
PLATING: ELECTRO-TIN (.0003 MIN.)
- WIRE SIZE: 22 -18 AWG
0.25 -1.5 MM²
- "UL" LISTING #E32244
"CSA" LISTING #18689
- ALL DIMENSIONS IN INCHES/[MM].
- PARTS ARE ROHS COMPLIANT.
- DIMS. SHOWN ARE FOR REFERENCE ONLY.

SYMBOLS	THIS DRAWING CONTAINS INFORMATION THAT IS PROPRIETARY TO MOLEX ELECTRONIC TECHNOLOGIES, LLC AND SHOULD NOT BE USED WITHOUT WRITTEN PERMISSION												
	DIMENSION UNITS	SCALE		CURRENT REV DESC: MIGRATION TO ECTR/NX									
∇ = 0	INCH/MM	NTS		EC NO: 620820								DOCUMENT NUMBER	
∇ = 0	GENERAL TOLERANCES (UNLESS SPECIFIED)			DRWN: ABENJAMINLW 2019/07/11						DOC TYPE			
∇ = 0				CHK'D: GROJAS01 2019/07/17						DOC PART			
S = 0	4 PLACES	±	---	±	---	APPR: JMACNEIL 2019/08/06						REVISION	
∇ = 0	3 PLACES	±	---	±	.005	INITIAL REVISION:						190980023	
∇ = 0	2 PLACES	±	0.13	±	.01	DRWN: GZ 1985/04/05						PSD 000 A	
∇ = 0	1 PLACE	±	0.25	±	---	APPR: JMACNEIL 2019/08/06						MATERIAL NUMBER	
∇ = 0	0 PLACES	±	---	±	---	ANGULAR TOL ± 0.5 °						CUSTOMER	
∇ = 0	DRAFT WHERE APPLICABLE MUST REMAIN WITHIN DIMENSIONS			THIRD ANGLE PROJECTION		DRAWING		SERIES		SHEET NUMBER			
∇ = 0						C-SIZE		19098		1 OF 1			

NOTES:

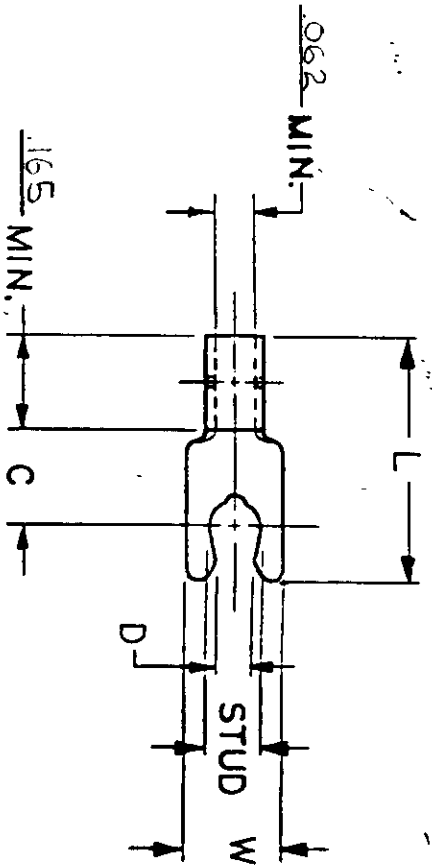
+ .001
- .000

① MAT'L: COPPER, STOCK TKN. 028
PLATING: ELECTRO-TIN (.0003 MIN.)

② "UL" LISTING # E32244
"CSA" LISTING # 186R9

FILE NO.

AA-CD-105-03



WIRE SIZE: 22-18 AWG.
25-15 MM²

PART NUMBER	"W" ±.010	"C" MIN.	"L" MAX.	"D" ±.005	AVAILABLE STUD SIZES	DIMENSIONAL TOLERANCES UNLESS OTHERWISE SPECIFIED		REFERENCE	SCALE: NTS	DATE	TITLE:	DWG. NO.	CUSTOMER DWG.
						DEC.	ANG.						
AA-1714-	.310	.261	.646	.139	08 (.173 ±.005)						SNAP SPADE SHORT TONGUE TERMINAL KRIMP TITE SERIES		
AA-1715-	.330	.261	.694	.156	10 (.198 ±.005)								

