



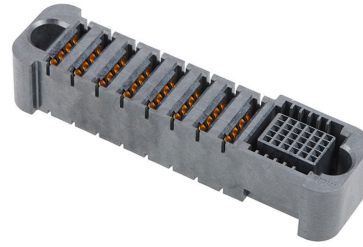
Part Number : [2141140001](#)

Product Description : EXTreme Guardian Vertical Receptacle Assembly with Guide Receivers, 30 Signal Circuits, 8 Power Circuits

Series Number : 214114

Status : Active

Product Category : Board-to-Board Connectors



Documents & Resources

Drawings

[2141140001_sd.pdf](#)

3D Models and Design Files

[2141140001_stp.zip](#)

Specifications

[2141130000-PS-000.pdf](#)

Product Environment Compliance

Compliance

GADSL/IMDS	Compliant with Exemption 44; 34; 33
China RoHS	
EU ELV	Not Relevant
Low-Halogen Status	Low-Halogen per IEC 61249-2-21
REACH SVHC	Not Contained per D(2024)4144-DC (27 June 2024)
EU RoHS	Compliant per EU 2015/863

Multiple Part Product Compliance Statements

- Eu RoHS
- REACH SVHC
- Low-Halogen

Multiple Part Industry Compliance Documents

- IPC 1752A Class C
- IPC 1752A Class D

- Molex Product Compliance Declaration
- IEC-62474
- chemSHERPA (xml)

EU RoHS Certificate of Compliance

Part Details

General

Status	Active
Category	Board-to-Board Connectors
Series	214114
Description	EXTreme Guardian Vertical Receptacle Assembly with Guide Receivers, 30 Signal Circuits, 8 Power Circuits
Application	Board-to-Board, Power, Signal
Component Type	PCB Receptacle
Product Name	EXTreme Guardian HD
UPC	193264618675

Agency

CSA	LR19980
UL	E29179

Electrical

Current - Maximum per Contact	80.0A
Voltage - Maximum	125V

Physical

Circuits (Loaded)	38
Circuits (maximum)	38
Color - Resin	Black
Durability (mating cycles max)	200
Flammability	94V-0
Glow-Wire Capable	No
Guide to Mating Part	Yes
Keying to Mating Part	None

Lock to Mating Part	No
Material - Metal	High Conductivity Copper
Material - Plating Mating	Gold
Material - Plating Termination	Tin
Material - Resin	Liquid Crystal Polymer
Net Weight	24.676/g
Number of Rows	1, 5
Orientation	Vertical
Packaging Type	Tray
PC Tail Length	2.42mm, 2.83mm
PCB Locator	No
PCB Retention	Yes
PCB Thickness - Recommended	1.58mm
Pitch - Mating Interface	2.00mm, 5.78mm
Plating min - Mating	0.762µm
Plating min - Termination	2.540µm
Polarized to Mating Part	Yes
Polarized to PCB	Yes
(p)ower-(s)ignal Configuration	8p - 30s
Temperature Range - Operating	-40° to +105°C
Termination Interface Style	Through Hole - Compliant Pin

Mates With / Use With

Mates with Part(s)

Description	Part Number
EXTreme Guardian Right-Angle Plug Assembly with Guide Pins, 8 Power Circuits, 30 Signal Circuits	<u>2141130010</u>