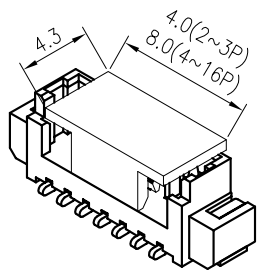
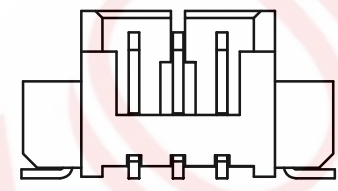
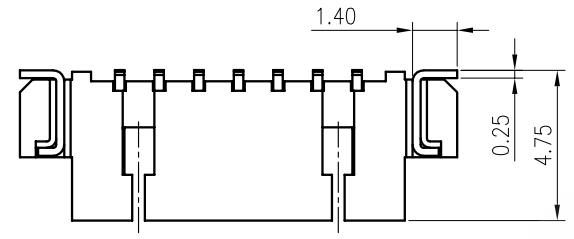


1 SAMZO 2 REAC/ROHS

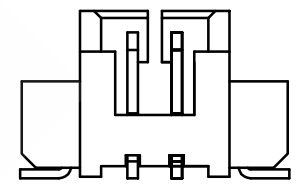
REV	ECN NO	DESCRIPTION	DESIGN	APPROVAL	DATE
A1	NEW	Replace frame			2013.06.21



WITH CAP VIEW

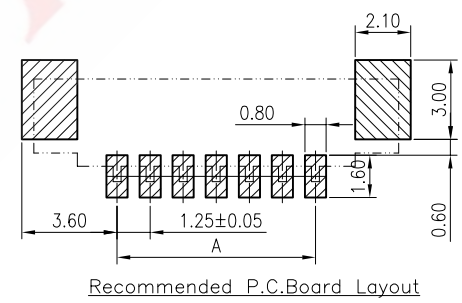
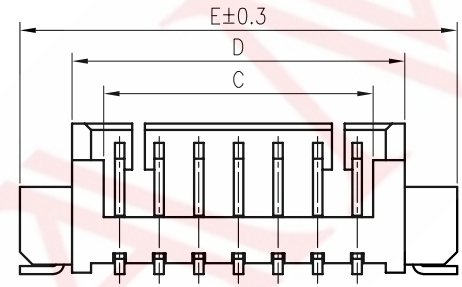
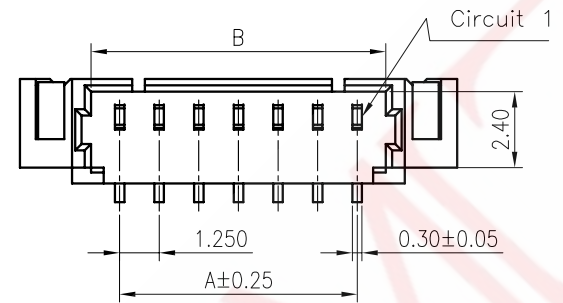
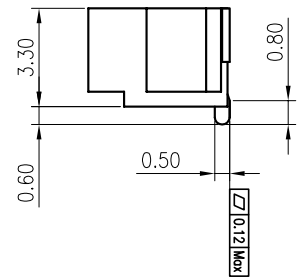


3 PIN



2 PIN

- ◆ SPECIFICATIONS
- Current rating: 1A AC, DC
  - Voltage rating: 125V AC, DC
  - Temperature range: -25°C ~ +85°C
  - Insulation resistance: 100MΩ Min.
  - Withstanding voltage: 250V AC/ minute.
  - Contact resistance: 20mΩ Max.

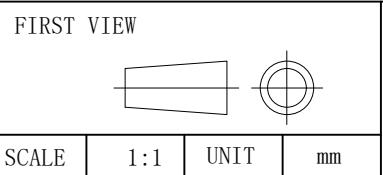


CTK	DIMENSIONS				
	A	B	C	D	E Δ
2	1.25	3.05	2.25	4.25	7.25
3	2.50	4.30	3.50	5.50	8.50
4	3.75	5.55	4.75	6.75	9.75
5	5.00	6.80	6.00	8.00	11.00
6	6.25	8.05	7.25	9.25	12.25
7	7.50	9.30	8.50	10.50	13.50
8	8.75	10.55	9.75	11.75	14.75
9	10.00	11.80	11.00	13.00	16.00
10	11.25	13.05	12.25	14.25	17.25
11	12.50	14.30	13.50	15.50	18.50
12	13.75	15.55	14.75	16.75	19.75
13	15.00	16.80	16.00	18.00	21.00
14	16.25	18.05	17.25	19.25	22.25
15	17.50	19.30	18.50	20.50	23.50
16	18.75	20.55	19.75	21.75	24.75

A. SERISE: 6E-MX  
 B. SPACING: H-1.25mm  
 C. MOUNTING: C-LT  
 D. STANDARD: A-WAFER  
 E: PIN: 02-2P (02-16P)  
 F: CODE: 0-REGULAR

6EHC A\*\* 0  
 A B C D E F

ITEM	DESCRIPTION	MATERIAL	QTY	FINSH/COLOR					
1	针脚	黄铜	N	高温亮锡					
2	主体	LCP	1	XXX	GENERAL TOLERANCE				
3	左焊片	黄铜	1	高温亮锡	DESIGN	WANGGUIFA	2018.06.12	≥0~2<	±0.15
4	右焊片	黄铜	1	高温亮锡	CHECKED	ZHENGUILAN	2018.06.12	≥2~5<	±0.25
					APPROVED	LILIANJIANG	2018.06.14	≥0~2<	±0.15
								≥5	±0.35



The copyright belongs to samzo parts [China] Co., Ltd. please use the material after samzo parts agree to authorize. The final right of interpretation belongs to samzo parts. WWW.KKK-JP.COM

TITLE: MX1.25-AWB-LT
DWG NO: 6EHC-P60
PART NO: 6EHC130713
MODEL NO: 6EHC A**-0
NAME: WAFER CONNECTOR

SAMZO COMPONENTS  
 Electronic switch and connector manufacturer