




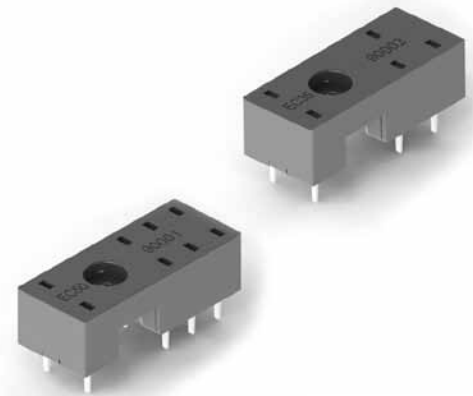


EC Series Relay Sockets

- Description** 5 and 8 Pin Slim Line Sockets
- Electrical Rating**
- 300 Volts, 10 Amps 
 - 300 Volts, 12 Amps 
- Construction**
- Contacts** • Copper Alloy, Tin Plated
- Molding** • Break Resistant Thermoplastic
- Agency Approvals**
- UL recognized, File No. E113714 
 - CSA certified, File No. 172852 
 - CE 



EC Series Ordering Code

Part #	Description	Terminal Type
EC35	SPDT, 5 Pin Slim Line (Fig. 1)	PC Board
EC50	DPDT, 8 Pin Slim Line (Fig. 2)	PC Board

Accessories

Part #	Description
	(Refer to the accessories pages 24-31)
MH12-2	Hold Down Spring Steel
MH16-2	Hold Down Spring Steel
MH25-2	Hold Down Spring Steel
MP12-2	Hold Down Spring Plastic
MP16-2	Hold Down Spring Plastic
MP25-2	Hold Down Spring Plastic

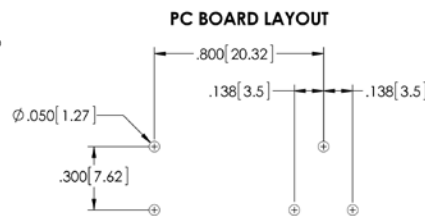
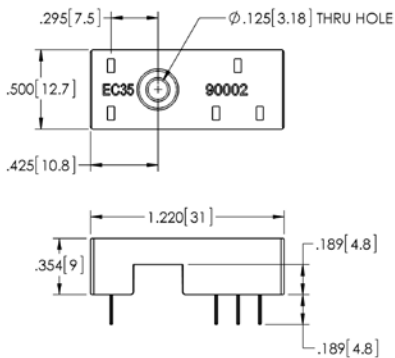


Figure 1

Figure 2

