

6450849-7 ✓ ACTIVE

MULTI-BEAM | MULTI-BEAM XLE

TE Internal #: 6450849-7

Connector Assembly, Plug, Board-to-Board, 40 Position, 5.08 mm [.2 in] Centerline, Printed Circuit Board, MULTI-BEAM XLE, Rectangular Power Connectors

[View on TE.com >](#)



Connectors > Power Connectors > Rectangular Power > Rectangular Power Connectors



Rectangular Power Connector Type: **Connector Assembly**

Connector & Housing Type: **Plug**

Connector System: **Board-to-Board**

Number of Positions: **40**

Centerline (Pitch): **5.08 mm [.2 in]**

## Features

### Product Type Features

|                                   |                       |
|-----------------------------------|-----------------------|
| Assembly Requirement              | Factory Assembled     |
| Rectangular Power Connector Type  | Connector Assembly    |
| Connector & Housing Type          | Plug                  |
| Connector System                  | Board-to-Board        |
| Connector & Contact Terminates To | Printed Circuit Board |

### Configuration Features

|                                 |             |
|---------------------------------|-------------|
| Mating & Unmating Configuration | Normal      |
| Number of Positions             | 40          |
| PCB Mount Orientation           | Right Angle |
| Number of Power Positions       | 8           |
| Number of Signal Positions      | 32          |
| Number of Rows                  | 4           |

### Electrical Characteristics

|                   |        |
|-------------------|--------|
| Operating Voltage | 60 VDC |
|-------------------|--------|



### Body Features

|                   |       |
|-------------------|-------|
| Wire Color (Base) | Black |
|-------------------|-------|

### Contact Features

|                                                |                                        |
|------------------------------------------------|----------------------------------------|
| Power Contact Base Material                    | Tin                                    |
| Contact Underplating Material Thickness        | 5.33 $\mu\text{m}$                     |
| Contact Mating Area Plating Material           | Gold                                   |
| Contact Underplating Material                  | Nickel                                 |
| Contact Current Rating (Max)                   | 50 A                                   |
| Contact Retention Within Housing               | Without                                |
| Contact Type                                   | Blade, Pin                             |
| PCB Contact Termination Area Plating Material  | Tin                                    |
| Contact Mating Area Plating Material Thickness | .76 $\mu\text{m}$ [30 $\mu\text{in}$ ] |

### Termination Features

|                                |                          |
|--------------------------------|--------------------------|
| Termination Post & Tail Length | 5.33 mm[.21 in]          |
| Termination Method to PCB      | Through Hole - Press-Fit |

### Mechanical Attachment

|                          |                       |
|--------------------------|-----------------------|
| PCB Mount Retention      | With                  |
| PCB Mount Retention Type | Action/Compliant Tail |
| Mating Retention Type    | Action/Compliant Tail |
| Connector Mounting Type  | Board Mount           |

### Housing Features

|                    |                                |
|--------------------|--------------------------------|
| Centerline (Pitch) | 5.08 mm[.2 in]                 |
| Housing Color      | Black                          |
| Housing Material   | High Temperature Thermoplastic |

### Dimensions

|                    |                |
|--------------------|----------------|
| Row-to-Row Spacing | 2.54 mm[.1 in] |
|--------------------|----------------|

### Usage Conditions

|                             |                                                              |
|-----------------------------|--------------------------------------------------------------|
| Operating Temperature Range | -40 – 125 $^{\circ}\text{C}$ [-40 – 257 $^{\circ}\text{F}$ ] |
|-----------------------------|--------------------------------------------------------------|

### Operation/Application

|                     |                |
|---------------------|----------------|
| Circuit Application | Power & Signal |
|---------------------|----------------|

### Industry Standards

|  |  |
|--|--|
|  |  |
|--|--|

|                        |                                       |
|------------------------|---------------------------------------|
| UL Flammability Rating | UL 94V-0                              |
| Glow Wire Rating       | High Temperature Part - Not Glow Wire |

### Packaging Features

|                  |      |
|------------------|------|
| Packaging Method | Tray |
|------------------|------|

### Product Compliance

[For compliance documentation, visit the product page on TE.com>](#)

|                                               |                                                                                                                                 |
|-----------------------------------------------|---------------------------------------------------------------------------------------------------------------------------------|
| EU RoHS Directive 2011/65/EU                  | Compliant                                                                                                                       |
| EU ELV Directive 2000/53/EC                   | Compliant                                                                                                                       |
| China RoHS 2 Directive MIIT Order No 32, 2016 | No Restricted Materials Above Threshold                                                                                         |
| EU REACH Regulation (EC) No. 1907/2006        | Current ECHA Candidate List: JUNE 2024 (241)<br>Candidate List Declared Against: JUNE 2024 (241)<br>Does not contain REACH SVHC |
| Halogen Content                               | Not Low Halogen - contains Br or Cl > 900 ppm.                                                                                  |
| Solder Process Capability                     | Not reviewed for solder process capability                                                                                      |

#### Product Compliance Disclaimer

This information is provided based on reasonable inquiry of our suppliers and represents our current actual knowledge based on the information they provided. This information is subject to change. The part numbers that TE has identified as EU RoHS compliant have a maximum concentration of 0.1% by weight in homogenous materials for lead, hexavalent chromium, mercury, PBB, PBDE, DBP, BBP, DEHP, DIBP, and 0.01% for cadmium, or qualify for an exemption to these limits as defined in the Annexes of Directive 2011/65/EU (RoHS2). Finished electrical and electronic equipment products will be CE marked as required by Directive 2011/65/EU. Components may not be CE marked. Additionally, the part numbers that TE has identified as EU ELV compliant have a maximum concentration of 0.1% by weight in homogenous materials for lead, hexavalent chromium, and mercury, and 0.01% for cadmium, or qualify for an exemption to these limits as defined in the Annexes of Directive 2000/53/EC (ELV). Regarding the REACH Regulation, the information TE provides on SVHC in articles for this part number is based on the latest European Chemicals Agency (ECHA) 'Guidance on requirements for substances in articles' posted at this URL: <https://echa.europa.eu/guidance-documents/guidance-on-reach>

### Compatible Parts



## Also in the Series | MULTI-BEAM XLE



Rectangular Power Connectors(111)

## Customers Also Bought



TE Part #2000713-6  
RA Keyed Guide Mod, Vita 46,  
Machined



TE Part #1-1469492-1  
MULTIGIG RT 9MM GUIDE/ESD 0 DEG



TE Part #7-1879215-2  
CPF 0402 25K5 0.1% 25PPM 1K RL



TE Part #1410965-1  
MULTIGIG RT T2 .8" BP FULL CNT



TE Part #8-320559-5  
SPLC BUTT PIDG 22-16C 22-18M



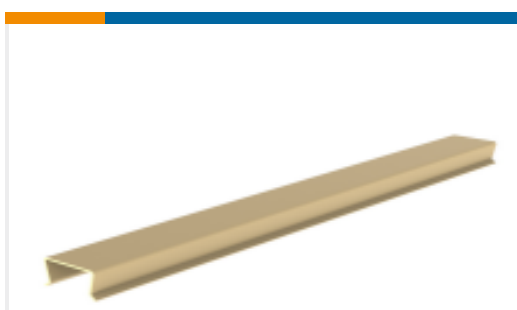
TE Part #NB18302001  
RNF-100-3-BK-STK



TE Part #2313238-1  
VERTRECCASSY, J0/J1A, MULTIGIG RT3



TE Part #2313441-1  
MULTIBEAM, VERT ASSY, VITA 62.2,  
PRSSFIT



TE Part #2226808-1  
COVER, MULTIGIG DAUGHTERCARD,  
6U



TE Part #ER8185-000  
S1125-KIT-8-CS-2140

## Documents

### Product Drawings

[MBXLE R/A HED 2ACP+1LP+32S+3HDP+1LP+1P](#)

English

### CAD Files

[3D PDF](#)

[3D](#)



### Customer View Model

[ENG\\_CVM\\_CVM\\_6450849-7\\_3.2d\\_dxf.zip](#)

English

### Customer View Model

[ENG\\_CVM\\_CVM\\_6450849-7\\_3.3d\\_igs.zip](#)

English

### Customer View Model

[ENG\\_CVM\\_CVM\\_6450849-7\\_3.3d\\_stp.zip](#)

English

By downloading the CAD file I accept and agree to the [Terms and Conditions](#) of use.

### Datasheets & Catalog Pages

[2\\_PIECE\\_POWER\\_CONNECTORS\\_qrg\\_4-1773458-1](#)

English

### Product Specifications

[Application Specification](#)

English