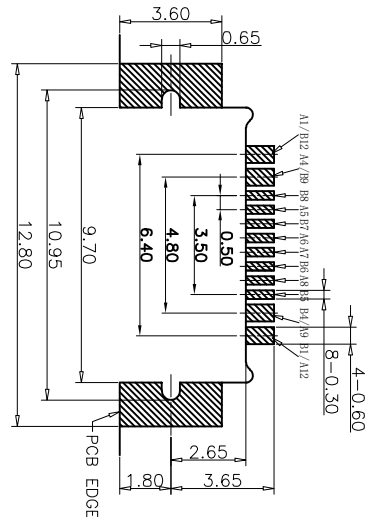
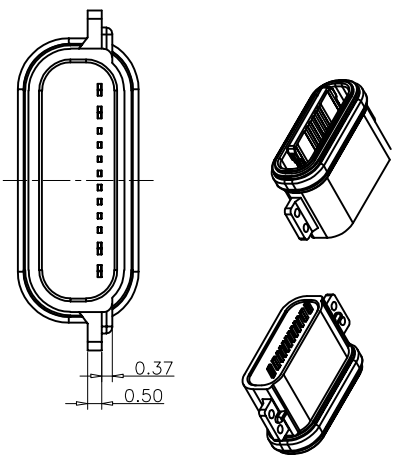




REV.	ECN NO.	DESCRIPTION	DATE	DESIGN



RECOMMEND P.C.B. LAYOUT
TOLERANCE UNSPECIFIED ±0.05mm

- NOTES:
SPECIFICATION:
1. CURRENT RATING: 3.0 A
2. VOLTAGE RATING: 3.0 V
3. VBUS & GND PINS AND OTHER PINS: 40mΩ/PIN MAX SHIELD: 50mΩ/MAX
LCR MAX: CHANGE OF ALL PINS: 10Ωm
4. INSULATION RESISTANCE: 100MΩ MIN
5. DIELECTRIC WITHSTAND VOLTAGE: AC 100V FOR 1MINUTE
6. INSERTION FORCE: 0.5-2.0kgf
7. UNMATING FORCE: 0.8-2.0kgf
8. DURABILITY: 10000 CYCLES
9. OPERATING TEMPERATURE: -35°C~+85°C
10. THE PEAK TEMPERATURE ON THE BOARD SHALL BE MAINTAINED FOR 10 SECONDS AT 210-230°C
11. WATERPROOF: IP-X7.

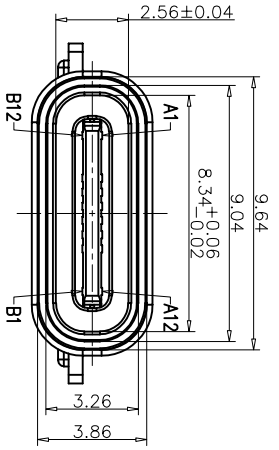
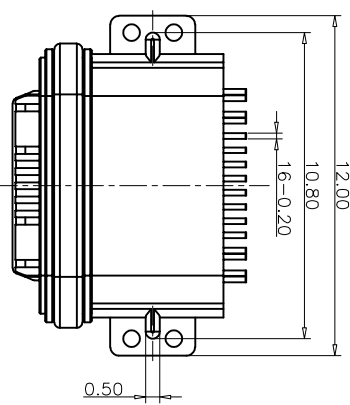
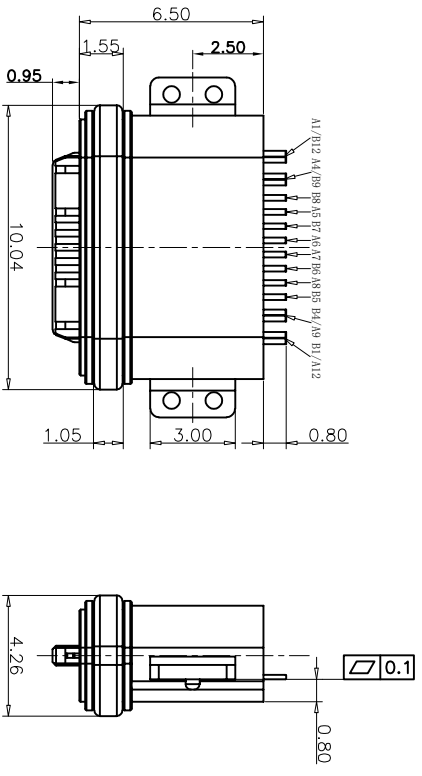


TABLE:

NO	PART	Q'TY	Material
1	SHELL	1	ZINC ALLOY/NI30U Min PLATED
2	CONTACT	16	C7025,TIN80U"/Au3U"/NI30U*PLATED
3	MID PLATE	1	SUS301,NO PLATING
4	HOUSING	1	LCR(E130) UI.94 V-0 BLACK
5	WATERPROOF RING	1	SILICONE(S)/60-65A) UI.94 V-0 BLACK

USB TYPE C PIN ASSIGNMENTS

PIN NUMBER	SIGNAL NAME	PIN NUMBER	SIGNAL NAME
A1	GND	B12	GND
A4	VBUS	B9	VBUS
A5	CC1	B8	SRU2
A6	DP1	B7	DN2
A7	DM1	B6	DP2
A8	SBU1	B5	CC2
A9	VBUS	B4	VBUS
A12	GND	B1	GND

NAME (INTENDED USE)	PART NO.	TITLE:
CUSTOMER DRAWING	F23-0101C161F26508-01	TYPE C 16P防水母座6.5L沉板0.8

TOLERANCE	DESIGN:	DRAWG NO.
X.X ±0.30 X.* ±10'	ZXM	F23-0101C161F26508-01
.XX ±0.20 .X' ± 8'		
.XXX ±0.10 .XX' ± 5'		
UNITS mm		
MATERILA		
FINISH		

FUYOU 广东富盈兴业精密科技实业有限公司
 Guangdong FUYOU Precision Electronic Technology Co.,Ltd.

SCALE SHEET REV.
 1:1 1/2 A