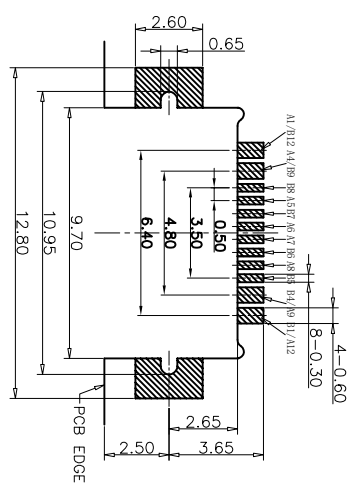
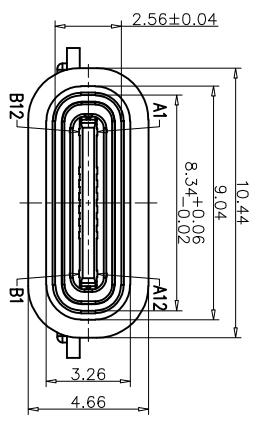
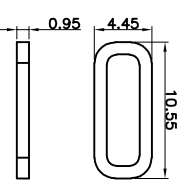
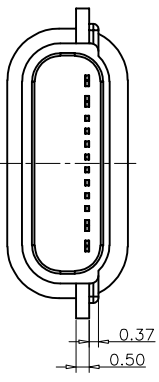
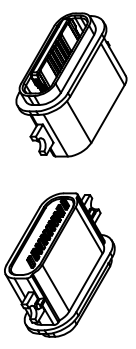
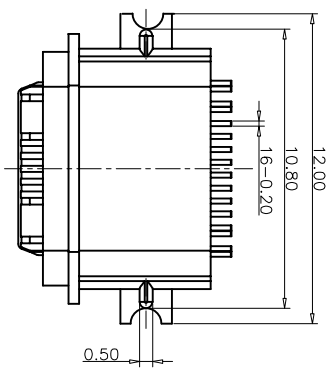
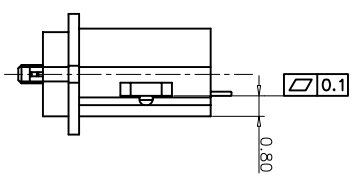
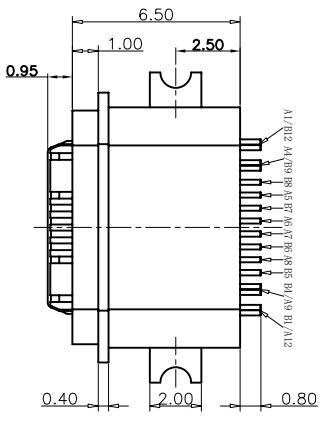


REV.	ECN NO.	DESCRIPTION	DATE	DESIGN



RECOMMEND P.C.B LAYOUT
TOLERANCE UNSPECIFIED ±0.05mm

- NOTES:
- SPECIFICATION:
- 1.CURRENT RATING: 3.0A
 - 2.VOLTAGE RATING: 3.0V
 - 3.VBUS & GND PINS AND OTHER PINS: 40mΩ/PIN MAX SHIELD: 50mΩ/MAX
 - 4.INSULATION RESISTANCE: 100MΩ MIN
 - 5.DIELECTRIC WITHSTAND VOLTAGE AC 100V FOR 1MINUTE
 - 6.INSERTION FORCE: 0.5-2.0kgf
 - 7.UNMATING FORCE: 0.8-2.0kgf
 - 8.DURABILITY: 10000 CYCLES
 - 9.OPERATING TEMPERATURE: -35°C~+85°C
 - 10.THE PEAK TEMPERATURE ON THE BOARD SHALL BE MAINTAINED FOR 10 SECONDS AT 210-230°C
 - 11.WATERPROOF: IP-X7.



防水圈图示

TABLE:

NO	PART	QTY	Material
1	SHELL	1	ZINC ALLOY,NI30U*MIN PLATED
2	CONTACT	16	C7025,TIN80U*/Au3U*/NI30U*PLATED
3	MID PLATE	1	SUS301,NO PLATING
4	HOUSING	1	LCP(E130) UL94 V-0 BLACK
5	WATERPROOF RING	1	SILICON(SI/60-65A) UL94 V-0 BLACK

USB TYPE C PIN ASSIGNMENTS

PIN NUMBER	SIGNAL NAME	PIN NUMBER	SIGNAL NAME
A1	GND	B12	GND
A4	VBUS	B9	VBUS
A5	CC1	B8	SBUS2
A6	DP1	B7	DM2
A7	DM1	B6	DP2
A8	SBUS1	B5	CC2
A9	VBUS	B4	VBUS
A12	GND	B1	GND

TOLERANCE		NAME(INTENDED USE)	
XX ±0.30	X' ±10'	PART NO.	
XX ±0.20	X' ±8'	CUSTOMER DRAWING	
.XXX ±0.10	.XX' ±5'	DESIGN: ZXW	
UNITS	mm	CHED:	
MATERILA	---	APPD:	
FINISH	---	DRAWG NO. F723-0107C161F26508-02	
		TITLE: TYPE C 16P防水母座沉板0.8锌合金	
		SCALE SHEET REV. 1:1 1/2 A	



FURU 广东富睿精密科技有限公司
Guangdong FURU Precision Electronic Technology Co., Ltd.