

SEALED TOGGLE AND ROCKER SWITCHES

A sealed switching chamber enables these toggle and rocker switches to comply with UL 508, paragraph 13.3 hosedown test. These switches survive where panels are subjected to periodic splash and washdowns, which are common to food and beverage equipment. They also withstand exposure to heavy accumulations of early morning dew that may condense on the control panel in cabs of vehicles left outdoors overnight. **Step-design case**—This unique design provides added space between terminals to help prevent shorting. In addition, terminal inserts are moulded into the high impact strength thermoplastic case. **Maintained and Momentary Action**—Two or three position, maintained and momentary spring-loaded actuating mechanism provides excellent tactile feedback of switch operation, resulting in a positive return action from momentary positions. **Elastomer Sealing**—Quality construction features include a moulded-in elastomer seal between the toggle lever and bushing, and between the cover and case for the NT Series; and a premoulded elastomer seal between the actuator and bushing, and an elastomer cover/case gasket seal for the NR Series.

ADDITIONAL FEATURES:

- 1, 2 or 4 pole circuitry
- High impact strength, non-tracking case enhances electrical stability
- Temperature range: -40 to 71°C (-40 to 160°F)
- Gold contacts available for logic level loads
- UL Recognized
- Seven colourful, non-removable rockers
- Choice of above-panel or flush-panel rocker mounting
- Standard bat handle toggle lever
- Pull-to-unlock toggle levers available

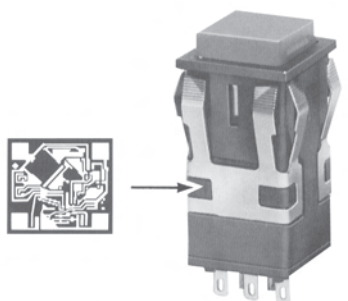
TYPICAL APPLICATIONS:

- Control panels in heavy duty vehicles and equipment for farming construction and mining
- Refrigeration units on trucks, trains, and boats
- Paper and other wood processing equipment
- Food and beverage equipment

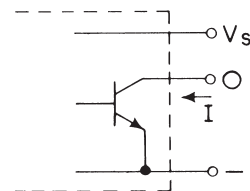
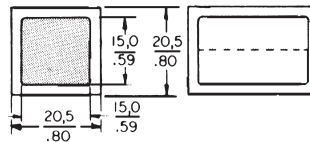
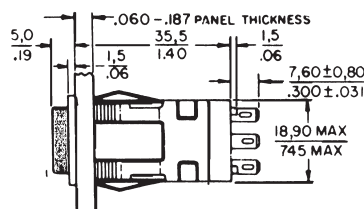
Cat. No.	No. of Poles	Circuits Made With Rocker At:			Net Price
		Ident. Lug Position	Centre Position	Opposite Lug Position	
NR SERIES ROCKER SWITCH 3-POSITION FLUSH-PANEL MOUNT, SCREW TERMINALS					
1NR1-7	1	1-2*	Off	2-3*	\$24.58

Cat. No.	No. of Poles	Circuits Made With Toggle At:			Net Price
		Keyway Position	Centre Position	Opposite Keyway	
NT SERIES TOGGLE SWITCH 2-POSITION, SCREW TERMINALS					
1NT1-2	1	Off	—	2-3	\$16.90
1NT1-3	1	1-2	—	2-3	16.90
1NT1-4	1	Off*	—	2-3	20.29
1NT1-6	1	1-2*	—	Off	16.90
1NT1-8	1	1-2*	—	2-3	16.90
NT SERIES TOGGLE SWITCH 2-POSITION, SCREW TERMINALS					
1NT1-1	1	1-2	Off	2-3	16.90
1NT1-5	1	1-2*	Off	2-3	16.90
1NT1-7	1	1-2*	Off	2-3*	16.90

*These positions are momentary. All others are maintained.



BUTTONS AND LAMPS ORDERED SEPARATELY.



CURRENT SINKING OUTPUT

SOLID STATE CONTROLS

are Hall effect pushbuttons (square and rectangular), that operate at 5 VDC or 6-16 VDC with current sinking output.

AML GIVES YOU MORE TO CHOOSE FROM

The Micro Switch AML full line catalogue, available on request from Electro Sonic, lists the many AML variations and options available to order, in addition to the stock items shown here. Options include: rocker or paddle actuators; LED or neon illumination; split screen displays with up to 3 lamp circuits; full guard bezels; and custom legends.

MICRO SWITCH AML SOLID STATE PUSHBUTTON SWITCHES AML11...NON-LIGHTED OR INCANDESCENT DISPLAY

THE AML 11 SOLID STATE PUSHBUTTON SWITCHES provide low voltage signals that interface with nearly all DC logic level loads. The contactless solid state switching mechanism is the performance proven Micro Switch Hall-effect integrated circuit. This switching technique combines a Hall generator, a trigger circuit, and an amplifier on a single silicon chip. The TTL compatible circuit output "snaps" from high to low (low to high) as the permanent magnet plunger moves adjacent to the Hall generator. The switches can be provided with 5 volt or 6-16 volt sinking integrated circuit functions.

The incandescent display units use a #86 lamp for 5-6.3 volts, a #73 for 12-14 volts, and a #85 for 24-28 volts—lamps extra.

ELECTRICAL CHARACTERISTICS

Integrated Circuit Function	Supply Current (Max.)	Output Voltage (Operated)	Output Leakage Current (Max. Released)	Switching Time Max.	
				Rise 10% to 90%	Fall 90% to 10%
5 VDC Sinking	3.5 mA (Released) 6.5 mA (Operated-no load)	+ .4 Volt (Sinking) 8 mA	2.0 µA	1.0 usec (Sinking 8 mA)	1.0 usec
6-16 VDC Sinking	6.5 mA @ 6 VDC 10.0 mA @ 16 VDC (Plus load current)	+ .4 Volt (Sinking) 20 mA Max.)	20 µA	1.5 usec (Sinking 20 mA)	0.5 usec

SOLID STATE PUSHBUTTON SWITCHES HALL EFFECTIC, TTL LOGIC LEVEL OUTPUT .110" X .020" TERMINALS FOR SOLDER OR QUICK-CONNECT

Cat. No.	Housing Type	Circuit Function, Momentary Action	Net Price
NON-LIGHTED			
AML11BBA2EA	Square	5 VDC Sinking	\$18.40
AML11BBA2EA		6-16 VDC Sinking	18.40
AML11EBA2EA	Rectangular	5 VDC Sinking	20.19
AML11EBA2EA		6-16 VDC Sinking	20.19
INCANDESCENT DISPLAY, 1 LAMP CKT.			
AML11CBA2EA	Square	5 VDC Sinking	24.20
AML11CBA2EA		6-16 VDC Sinking	24.20
AML11FBA2EA	Rectangular	5 VDC Sinking	22.77
AML11FBA2EA		6-16 VDC Sinking	22.77

NOTE: .025" x .025" terminals for Printed Circuit or Wire Wrap are also available to order at the same prices. Change the last digit from -2 to -30-.

EXAMPLE: AML11BBA3AA.

NOTE: Buttons and lamps are ordered separately, to allow for the greatest flexibility. The incandescent display version of the device accepts T-1¼ wedge base lamps. These lamps stocked by Electro Sonic are type nos. 86—5.0 to 6.3 Volts, no. 73—12.0 to 14.0 volts, and no. 85—24.0 to 28.0 volts. See the miniature lamp listing elsewhere in this catalogue for specifications and prices. Refer to the AML51 section of this listing for the various colours and styles of buttons offered.

CUSTOM ENGRAVED LEGENDS

Electro Sonic provides custom engraving of all plastic indicator and pushbutton caps supplied from our stock. Delivery in 7 to 10 days. When ordering full details should be provided on a drawing or sketch. Specify whether black or white letters are desired. Black letters are suggested on light colours such as white, orange, and yellow; White letters are more effective on red, green, and blue. Prices are as follows:

ENGRAVING PER BUTTON*

Cat. No.
1 LINE
2 LINE
3 LINE

*Quantity prices apply only when all buttons are the same, with the same legend on each button. Split legends (two separate inserts in one cap) are charged as two caps.

NOTE: Contact your Electro Sonic sales representative for pricing.



BUTTONS AND LAMPS
ORDERED SEPARATELY.

ELECTRONIC-DUTY CONTROLS

are pushbutton switches (square and rectangular), with current capacity up to 3 amps, 120 VAC.

AML21...NON-LIGHTED OR INCANDESCENT DISPLAY

THE AML21 PUSHBUTTONS provide electronic control switching capability (up to 3 amps, 125 VAC). They are provided in either square or rectangular housings; lighted or unlighted; momentary or two-level alternate action (push-on, push-off).

The square housing accepts one T-1¼ wedge base lamp. The rectangular housing accepts either one or two lamps, and are also available in non-illuminated versions.

The incandescent display units use a #86 lamp for 5-6.3 volts, a #73 for 12-14 volts, and a #85 for 24-28 volts—lamps extra.

ELECTRICAL/MECHANICAL LIFE

MOMENTARY ACTION: 100,000 cycles min. @ 24 VDC, 100 mA; 5 VDC, 10 mA; .5 VDC, 1 mA. 25,000 cycles min. @ 250 VAC, 2 amps; 125 VAC, 3 amps; 24 VDC, 2 amps.

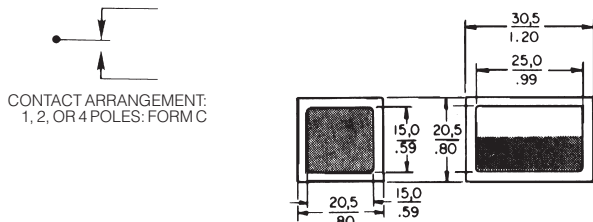
Switch resistance is usually less than 1% of load resistance on greater than .5 volt. Below .5 volt, resistance is impractical to predict from laboratory tests.

ELECTRICAL SPECIFICATIONS

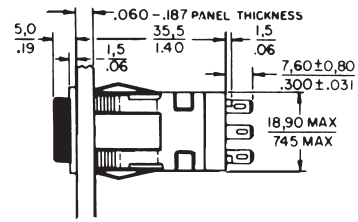
Contacts	Voltage	Current	Load Type
Silver	250 VAC	2 amps	75% P.F.*
	125 VAC	3 amps	75% P.F.*
	24 VDC	2 amps	Resistive
Gold	24 VDC	100 mA	Resistive
	5 VDC	10 mA	Resistive
	.5 VDC	1 mA	Resistive

*Power Factor.

NOTE: For lower voltage and current usage, determine suitability based on your application conditions.



CONTACT ARRANGEMENT:
1, 2, OR 4 POLES: FORM C



ELECTRONIC CONTROL PUSHBUTTON SWITCHES SILVER CONTACTS, 3 A, 125 VAC; 2 A, 250 VAC; 2 A, 24 VDC .110" x .020" TERMINALS FOR SOLDER OR QUICK-CONNECT

Cat. No.	Housing Type	Switch Action	Switch Circuit	Net Price
NON-LIGHTED				
AML21BBA2AA	Square	Momentary	SPDT	\$12.39
AML21BBA2AC			DPDT	16.29
AML21BBA2AB		Alternate	SPDT	12.86
AML21BBA2AD			DPDT	16.66
AML21EBA2AA	Rectangular	Momentary	SPDT	13.76
AML21EBA2AC			DPDT	17.61
AML21EBA2AB		Alternate	SPDT	14.18
AML21EBA2AD			DPDT	18.03
INCANDESCENT DISPLAY, 1 LAMP CKT.				
AML21CBA2AA	Square	Momentary	SPDT	15.76
AML21CBA2AC			DPDT	19.61
AML21CBA2AB		Alternate	SPDT	16.24
AML21CBA2AD			DPDT	20.03
AML21FBA2AA	Rectangular	Momentary	SPDT	17.19
AML21FBA2AC			DPDT	21.03
AML21FBA2AB		Alternate	SPDT	17.61
AML21FBA2AD			DPDT	21.30

NOTE: .025" x .025" terminals for Printed Circuit or Wire Wrap are also available to order at the same prices. Change the last digit from -2- to -3-.

EXAMPLE: AML21BBA3AA.

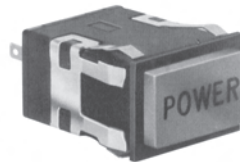
ELECTRONIC CONTROL PUSHBUTTON SWITCHES GOLD CONTACTS, 10 MA, 5 VDC; 1 MA, 0.5 VDC; 100 MA, 24 VDC .110" x .020" TERMINALS FOR SOLDER OR QUICK-CONNECT

Cat. No.	Housing Type	Switch Action	Switch Circuit	Net Price
NON-LIGHTED				
AML21BBA2BA	Square	Momentary	SPDT	\$14.60
AML21BBA2BC			DPDT	19.98
AML21EBA2BA	Rectangular	Momentary	SPDT	15.92
AML21EBA2BC			DPDT	21.30
INCANDESCENT DISPLAY, 1 LAMP CKT.				
AML21CBA2BA	Square	Momentary	SPDT	20.66
AML21CBA2BC			DPDT	23.25
AML21FBA2BA	Rectangular	Momentary	SPDT	19.29
AML21FBA2BC			DPDT	24.67

NOTE: .025" x .025" terminals for Printed Circuit or Wire Wrap are also available to order at the same prices. Change the last digit from -2- to -3-.

EXAMPLE: AML21BBA3BA.

NOTE: Buttons and lamps are ordered separately, to allow for the greatest flexibility. The incandescent display version of the device accepts T-1¼ wedge base lamps. These lamps stocked by Electro Sonic are type nos. 86—5.0 to 6.3 Volts, no. 73—12.0 to 14.0 volts, and no. 85—24.0 to 28.0 volts. See the miniature lamp listing elsewhere in this catalogue for specifications and prices. Refer to the AML51 section of this listing for the various colours and styles of buttons offered.

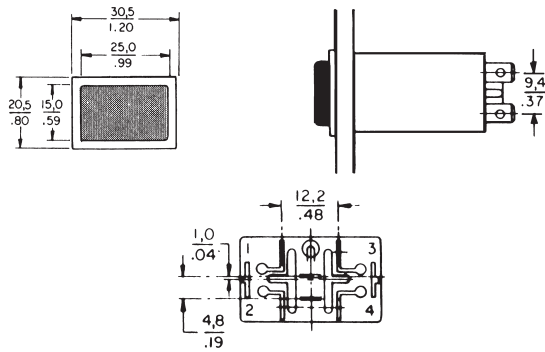


BUTTONS AND LAMPS
ORDERED SEPARATELY.



CONTACT ARRANGEMENT
2 POLES: FORM X

Continued on next page....



POWER-DUTY CONTROLS

are 10 amp double-pole rectangular pushbutton switches with or without incandescent lighted pushbuttons.

POWER DUTY PUSHBUTTON SWITCHES AML31 AML31...NON-LIGHTED AND INCANDESCENT DISPLAY

THE AML31 SWITCHES are used in power (line disconnect) switch applications. These pushbutton switches are available with rectangular housings only. The switch circuitry is DPST (double-break), normally open (Form X), two-level alternate-action.

The AML31 housing accepts one T-1½ wedge base lamp for lighting. It utilizes AML51 buttons, lamps and buttons are ordered separately. The incandescent display units use a #86 lamp for 5-6.3 volts, a #73 for 12-14 volts, and a #85 for 24-28 volts.

Electrical/Mechanical Life: 25,000 cycles min.

ELECTRICAL SPECIFICATIONS

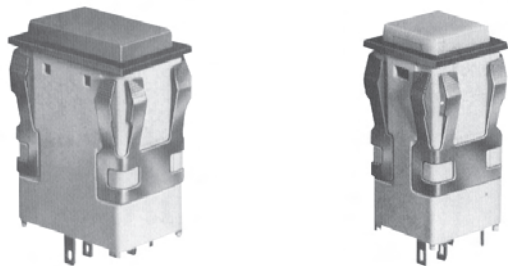
Voltage	Current	Load Type
125 VAC	10 amps	60% P.F.*
250 VAC	10 amps	60% P.F.*

10 amps, ½ hp.
*Power Factor

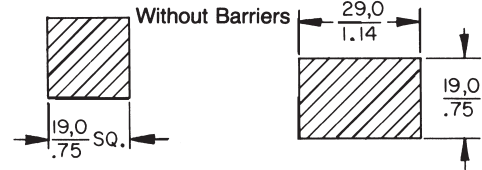
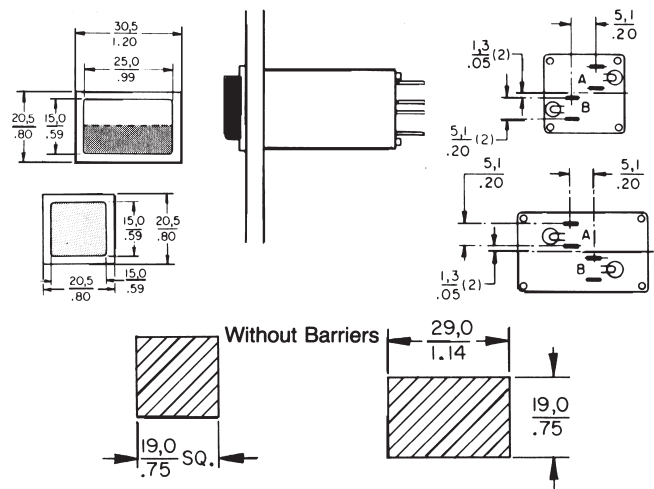
POWER DUTY PUSHBUTTON SWITCHES 10 AMPS, ½ HP, 125-250 VAC .187" X .020" TERMINALS FOR SOLDER OR QUICK-CONNECT

Cat. No.	Housing Type	Switch Action	Switch Circuit	Net Price
NON-LIGHTED				
AML31EBA4AD	Rectangular	Alternate	DPST-DB N.O.	\$27.36
INCANDESCENT DISPLAY, 1 ISOLATED LAMP CKT.				
AML31FBA4AD	Rectangular	Alternate	DPST-DB N.O.	29.89

NOTE: Buttons and lamps are ordered separately, to allow for the greatest flexibility. The incandescent display version of the device accepts T-1½ wedge base lamps. These lamps stocked by Electro Sonic are type nos. 86—5.0 to 6.3 volts, no. 73—12.0 to 14.0 volts, and no. 85—24.0 to 28.0 volts. See the miniature lamp listing elsewhere in this catalogue for specifications and prices. Refer to the AML51 section of this listing for the various colours and styles of buttons offered.



BUTTONS AND LAMPS
ORDERED SEPARATELY



PANEL CUTOUTS FOR SWITCHES AND INDICATORS

INDICATORS

are matching pushbutton style with incandescent lamp illumination for uniform panel appearance.

AML41...INCANDESCENT DISPLAY

PUSHBUTTON STYLE INDICATORS are available with either square or rectangular housing. They use the AML51 "C" or "F" button. The square units mount in a .750" square hole and the rectangular units mount in a .750" x 1.141" hole.

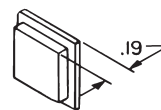
INDICATORS INCANDESCENT DISPLAY, 1 LAMP CKT. .110" X .020" TERMINALS FOR SOLDER OR QUICK-CONNECT

Cat. No.	Housing Type	Net Price
AML41CBA2	Square	\$10.54
AML41FBA2	Rectangular	11.39

NOTE: .025" x .025" terminals for Printed Circuit or Wire Wrap are also available to order at the same prices. Change the last digit from -2- to -3-.

EXAMPLE: AML41CBA3

NOTE: Buttons and lamps are ordered separately, to allow for the greatest flexibility. The incandescent display version of the device accepts T-1½ wedge base lamps. These lamps stocked by Electro Sonic are type nos. 86—5.0 to 6.3 volts, no. 73—12.0 to 14.0 volts, and no. 85—24.0 to 28.0 volts. See the miniature lamp listing elsewhere in this catalogue for specifications and prices. Refer to the AML51 section of this listing for the various colours and styles of buttons offered.



AML51-C



AML51-F

BUTTONS FOR SWITCHES AND INDICATORS AML51 FOR NON-LIGHTED OR INCANDESCENT DISPLAY

AML51 BUTTON colours are bright and uniform, providing strong definition and good visibility, whether lighted or unlighted.

Transmitted colour can be distinguished when the lamp is On or Off. This is achieved by using a coloured translucent button.

BUTTONS FOR PUSHBUTTONS & INDICATORS TRANSMITTED COLOUR, FOR NON LIGHTED OR INCANDESCENT DISPLAY

Cat. No.	Button Type	Button Colour	Net Price
AML51C1OR	Square	Red	\$1.37
AML51C1OY		Yellow	1.37
AML51C1OG		Green	1.37
AML51C1OB		Blue	1.37
AML51C1OW		White	1.37
AML51C1OK		Black*	1.37
AML51F1OR	Rectangular	Red	2.06
AML51F1OY		Yellow	2.06
AML51F1OG		Green	2.06
AML51F1OB		Blue	2.06
AML51F1OW		White	2.06
AML51F1OK		Black*	2.06

*Black not recommended for lighted display.

Cat. No.	Protective Height	No. of Beams	Net Price
F3SN-A0217P25	217mm (8.54 in.)	13	\$1626.00
F3SN-A0307P25	307mm (12 in.)	19	1916.00
F3SN-A0457P25	457mm (18 in.)	29	2400.00
F3SN-A0607P25	607mm (18 in.)	39	2883.00
F3SN-A0757P25	757mm (30 in.)	49	3366.00
F3SN-A0907P25	907mm (36 in.)	59	3850.00
F3SN-A1057P25	1057mm (42 in.)	69	4333.00
F3SN-A1207P25	1207mm (48 in.)	79	4818.00
F3SN-A1357P25	1357mm (54 in.)	54	5301.00
F3SN-A1507P25	1507mm (60 in.)	99	5784.00
F3SN-A1657P25	1657mm (66 in.)	109	6267.00
F3SN-A1807P25	1807mm (72 in.)	119	6750.00

ACCESSORY FOR F3SN-A SAFETY LIGHT CURTAIN

Cat. No.	Description	Net Price
SAFETY RELAY UNIT		
F3SP-B1P	Relay Output - 3NO + 1NC	\$381.00
SETTING CONSOLE		
F39-MC11	One branching "T"-connector, One connector cap, 2 m cable, and instruction manual	450.00

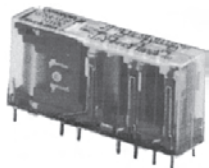
SINGLE-ENDED CONNECTOR CABLE (FOR EMITTER AND RECEIVER SET)

Cat. No.	Cable Length	Specifications	Net Price
F39-JC3A	3m	M12 connector (8 pins)	\$140.00
F39-JC7A	7m		205.00
F39-JC10A	10m		250.00
F39-JC15A	15m		330.00

DOUBLE-ENDED CONNECTOR CABLE (FOR EMITTER AND RECEIVER SET)

Cat. No.	Cable Length	Specification	Application	Net Price
F39-JCR2B	0.2m	M12 connector (8 pin)	Connector with F3SP-B1P*	\$123.00
F39-JC3B	3m			150.00
F39-JC7B	7m			205.00
F39-JC10B	10m			260.00
F39-JC15B	15m			340.00

* Cannot be used for series connection



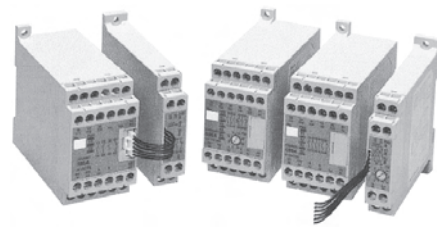
G7SA SLIM PLUG-IN SAFETY RELAYS FOR MACHINE CONTROL

FEATURES: Slim body only 13 x 24 x 50mm (six poles). Terminal arrangement simplifies PCB pattern design. Positive, force-guided contacts.

Cat. No.	No. of Contacts	NO Contacts	NC contacts	Contact Form	Net Price
G7SA-3A1B	4 Poles	3	1	3PST-NO, SPST-NC	\$36.00
G7SA-2A2B	4 Poles	2	2	DPST-NO, DPST-NC	36.00
G7SA-5A1B	6 Poles	5	1	5PST-NO, SPST-NC	40.00
G7SA-4A2B	6 Poles	4	2	4PST-NO, DPST-NC	40.00
G7SA-3A3B	6 Poles	3	3	3PST-NO, 3PST-NC	40.00

ACCESSORIES FOR G7SA SLIM PLUG-IN SAFETY RELAYS

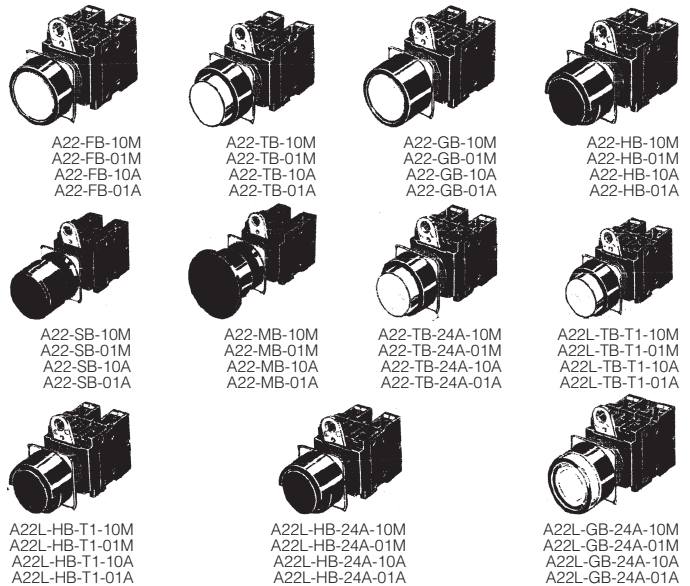
Cat. No.	Mounting Sockets	Net Price
P7SA-10F	DIN-rail mounting and screw mounting, 4 poles	\$24.00
P7SA-14F	DIN-rail mounting and screw mounting, 6 poles	25.00
P7SA-10F-ND	DIN-rail mounting and screw mounting with LED indicator, 4 poles	25.00
P7SA-14F-ND	DIN-rail mounting and screw mounting with LED indicator, 6 poles	26.00
P7SA-10P	PCB terminals, 4 poles	9.50
P7SA-14P	PCB terminals, 6 poles	10.00



G9SA SAFETY RELAY UNITS

FEATURES: Several types of 45mm wide Units are available: a 3-pole model a 5-pole model, models with 3 poles and 2 OFF-delay poles. 17.5mm wide Expansion Units with 3 poles and 3 OFF-delay poles are also available. Simple expansion connection. OFF-delay models have 15-step OFF-delay settings. Conforms to EN standards (BG approval). Approved by UL and CSA. DIN-rail mounting or screw mounting.

Cat. No.	Main Contacts	Auxiliary Contacts	No. of Input Channels	Category	Net Price
RATED VOLTAGE: 24VAC/VDC, 100 TO 240VAC					
G9SA-301 AC100-240	3PST-NO	SPST-NC	1 Channel or 2 channels possible	4	\$330.00
G9SA-301 AC/DC24					290.00
G9SA-501 AC/DC24	5PST-NO	SPST-NC			475.00
G9SA-501 AC/DC24					435.00



22MM PUSHBUTTON SWITCHES INSTALL IN 22MM DIA. OR 25MM DIA. PANEL CUTOUT

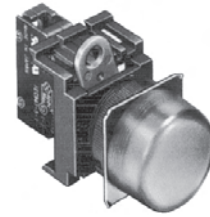
FEATURES: Locking level ensures easy mounting and removal of switch unit. Increase wiring efficiency and decrease mounting depth with three-row mounting of switch unit contact blocks. Finger protection mechanism on switch unit provided as a standard feature. Use optional 25mm dia. ring o install in 25mm dia. panel cutouts. IP65 oil resistant. EN60947-5-1.

Cat. No.	Appearance	Contact Output	Switch Operation	Net Price
NON-ILLUMINATED (ROUND TYPE)				
A22-FB-10M	Round Flush type	SPST-NO	Momentary	\$15.90
A22-FB-01M		SPST-NC		15.90
A22-FB-10A	Round/Extended type	SPST-NO	Latching	23.00
A22-FB-01A		SPST-NC		23.00
A22-TB-10M	Round/Extended type	SPST-NO	Momentary	15.90
A22-TB-01M		SPST-NC		15.90
A22-TB-10A	Round/Extended type	SPST-NO	Latching	23.00
A22-TB-01A		SPST-NC		23.00
A22-GB-10M	Round/Full-guard type	SPST-NO	Momentary	18.50
A22-GB-01M		SPST-NC		27.20
A22-GB-10A	Round/Full-guard type	SPST-NO	Latching	30.50
A22-GB-01A		SPST-NC		30.50

NOTE: For other colours replace "B" for Black in Cat. No. with "R" = Red, Y = Yellow, G = Green, W = White, A = Blue.

Continued on next page....

Cat. No.	Appearance	Contact Output	Switch Operation	Net Price
NON-ILLUMINATED (ROUND TYPE) (CONTINUED)				
A22-HB-10M	Round/Half-guard type	SPST-NO	Momentary	\$15.50
A22-HB-01M		SPST-NC		
A22-HB-10A		SPST-NO	Latching	27.50
A22-HB-01A		SPST-NC		
A22-SB-10M	Small-size Mushroom Type (30mm dia. head)	SPST-NO	Momentary	16.00
A22-SB-01M		SPST-NC		
A22-MB-10M	Medium-size Mushroom Type (40mm dia. head)	SPST-NO	Momentary	17.25
A22-MB-01M		SPST-NC		
A22-MB-10A		SPST-NO		21.60
A22-MB-01A		SPST-NC		



M22 PILOT LIGHTS

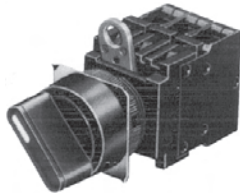
22MM DIA. AND 25MM DIA ROUND AND SQUARE INDICATORS

FEATURES: Locking lever ensures easy mounting and removal of switch unit. Use optional 25mm dia. ring to install in 25mm dia panel cutouts. Finger protection mechanism on lamp unit provided as a standard feature. IP65 oil resistant. EN60947-5-1

Cat. No.	Appearance	Contact Output	Switch Operation	Net Price
ILLUMINATED (ROUND TYPE), 24 VAC/DC				
A22L-TB-24A-10M	Round/Extended type LED Lighting (Without transformer)	SPST-NO	Momentary	\$32.25
A22L-TB-24A-01M		SPST-NC		
A22L-TB-24A-10A		SPST-NO	Latching	44.25
A22L-TB-24A-01A		SPST-NC		
A22L-HB-24A-10M	Round/Half-Guard type LED Lighting (Without Transformer)	SPST-NO	Momentary	29.25
A22L-HB-24A-01M		SPST-NC		
A22L-HB-24A-10A		SPST-NO	Latching	51.25
A22L-HB-24A-01A		SPST-NC		
A22L-GB-24A-10M	Round/Clear full-guard type LED Lighting (Without transformer)	SPST-NO	Momentary	39.25
A22L-GB-24A-01M		SPST-NC		
A22L-GB-24A-10A		SPST-NO	Latching	51.25
A22L-GB-24A-01A		SPST-NC		

Cat. No.	Appearance	Contact Output	Switch Operation	Net Price
ILLUMINATED (ROUND TYPE), 110 VAC				
A22L-TB-T1-10M	Round/Extended type LED Lighting (With Transformer)	SPST-NO	Momentary	40.50
A22L-TB-T1-01M		SPST-NC		
A22L-TB-T1-10A		SPST-NO	Latching	52.50
A22L-TB-T1-01A		SPST-NC		
A22L-HB-T1-10M	Round/Half-guard type LED Lighting (With Transformer)	SPST-NO	Momentary	47.50
A22L-HB-T1-01M		SPST-NC		
A22L-HB-T1-10A		SPST-NO	Latching	59.75
A22L-HB-T1-01A		SPST-NC		

NOTE: For other colours replace "B" for Black in Cat. No. with "R" = Red, Y = Yellow, G = Green, W = White, A = Blue.



A22S/W KNOB-TYPE SELECTOR SWITCH INSTALL IN 22MM DIA. OR 25MM DIA PANEL CUTOUT

FEATURES: Illuminated and Non-illuminated models. Locking lever ensures easy mounting and removal of switch unit. Increase wiring efficiency and decrease mounting depth with three optional mounting of switch unit contact blocks. Finger-safe contact blocks. Use optional 25mm dia. ring to install in 25mm dia. panel cutouts. Operator colour: Black.

Cat. No.	Positions	Operating Method	Contacts	Net Price
NON-ILLUMINATED KNOB-TYPE SELECTOR SWITCHES				
A22S-2M-11	2	Maintained	SPST-NO + SPST-NC	\$30.30
A22S-2A-11		Spring Return		
A22S-3M-11	3	Maintained	SPST-NO + SPST-NC	33.00
A22S-3A-11		Spring Return		
NON-ILLUMINATED EXTENDED LEVER KNOB-TYPE SELECTOR SWITCHES				
A22S-C2M-11	2	Maintained	SPST-NO + SPST-NC	25.00
A22S-C2A-11		Spring Return		
A22S-C3M-11	3	Maintained	SPST-NO + SPST-NC	26.00
A22S-C3A-11		Spring Return		

NOTE: Illuminated and key selector switches also available.

Cat. No.	Rated Voltage	Lighting	Net Price
ROUND/FLUSH WITHOUT TRANSFORMER			
M22-FB-6D	6 VDC	LED	\$22.75
M22-FB-6A	6 VAC		22.75
M22-FB-12A	12 VAC/DC		22.75
M22-FB-24A	24 VAC/DC		22.75
ROUND/FLUSH WITH TRANSFORMER			
M22-FB-T1	110 VAC	LED	29.75
M22-FB-T2	220 VAC		29.75
SQUARE/EXTENDED WITHOUT TRANSFORMER			
M22-CB-6D	6 VDC	LED	31.25
M22-CB-6A	6 VAC		31.25
M22-CB-12A	12 VAC/DC		31.25
M22-CB-24A	24 VAC/DC		31.25
SQUARE/EXTENDED WITH TRANSFORMER			
M22-CB-T1	110 VAC	LED	39.00
M22-CB-T2	220 VAC		39.00

NOTE: For other Illumination colours replace "B" for Black in Cat. No. with R = Red, Y = Yellow, G = Green, W = White, A = Blue. To order Incandescent versions of the M22 Pilot Light, replace the last two digits in the Cat. No. ie, 12A, 24A, T1 with the appropriate digits 5, 12, 24 and HI

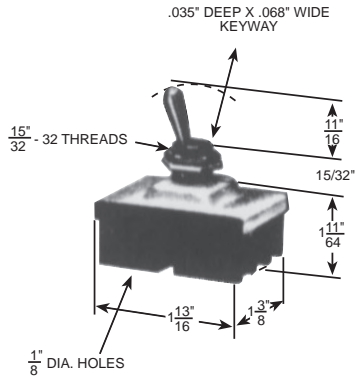
ACCESSORIES FOR M22 PILOT LIGHTS

Cat. No.	Classification	Remarks	Net Price	
CONTACT BLOCKS				
A22-10	SPST-NO	General-purpose load	\$9.00	
A22-10S		Microload		
A22-01	SPST-NC	General-purpose load	9.00	
A22-01S		Microload	33.10	
A22-20	DPST-NO	General-purpose load	36.40	
A22-20S		Microload	36.25	
A22-02	DPST-NC	General-purpose load	36.40	
A22-02S		Microload	36.25	
LAMP SOCKET				
A22-TN	Direct lighting	Used when changing the lighting method	11.30	
A22-T1	Transformer illumination		110 VAC	21.60
A22-T2			220 VAC	21.60

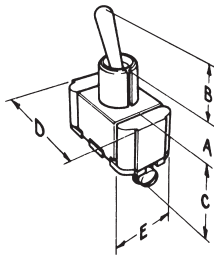
Cat. No.	Classification	Remarks	Net Price
MOUNTING LATCHES			
A22-3200	For momentary models	Provided as standard. Order Mounting Latches only when Mounting Contact Blocks or Lamp Sockets that are purchased individually	2.80

Cat. No.	Classification	Remarks	Net Price
LEGEND PLATE FRAMES, STANDARD SIZE			
A22Z-3321	With Snap-in Legend Plate (Without text)	White	Snap-in Legend Plate is acrylic
A22Z-3322		Red	
A22Z-3323		Black	
A22Z-3320	Without Snap-in Legend Plate		2.30

Cat. No.	Classification	Remarks	Net Price
LEGEND PLATE FRAMES, LARGE SIZE			
A22Z-3331	With Snap-in Legend Plate (Without text)	White	Snap-in Legend Plate is acrylic
A22Z-3332		Red	
A22Z-3333		Black	
A22Z-3330	Without Snap-in Legend Plate		2.70



Cat. No.	Poles & Throw	Amps-A.C.		H.P.-A.C.		Term.	Net Price
		125V	250V	125V	250V		
7933K36	4PST	20	10	—	3/4	Screw	\$17.41
7934K36	4PST Center Off	20	10	—	3/4	Screw	19.59



EATON GENERAL PURPOSE TOGGLE SWITCHES 7300 & 7500 SERIES AC RATED

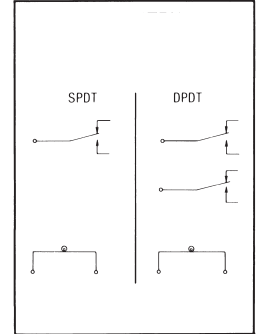
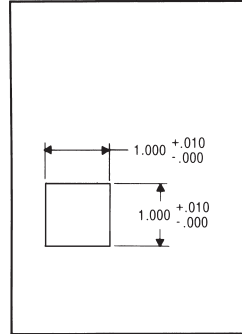
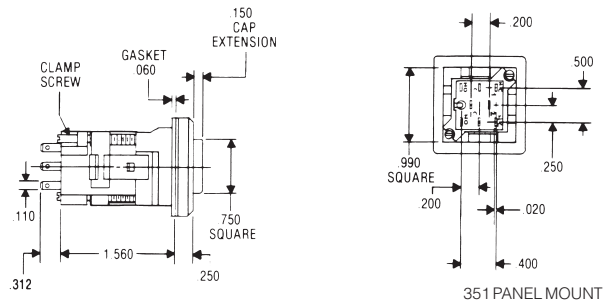
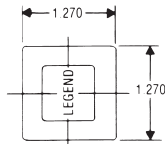
SPECIFICATIONS:

- One hole mount
- Slow make, slow break contacts
- Mounting hardware and terminal screws supplied unassembled
- Keyway—0.068" x 0.035" deep—provides antirotational feature
- Butt action contact mechanism designed specifically for use on AC and low voltage DC applications
- Threaded bushing—.468"-.32
- Ratings listed for 125VAC also apply at 28VDC
- Mounting hardware consists of two mounting nuts

Switch No.	Dimensions, Inches				
	A	B	C	D	E
7315K36	0.468	0.468	0.875	1.328	0.750
7506K4	0.469	0.563	1.000	1.171	0.625
7509K5	0.469	0.563	1.000	1.171	0.625

Cat. No.	Lever			Terminal	Net Price
	Up	Center	Down		
DPDT—15 AMP @ 125VAC; 6 AMP @ 250VAC					
7315K36	On	Off	On*	Screw	\$24.15
SPST—10 AMP @ 250VAC; 1/2HP @ 250VAC					
7506K4	Off	None	On*	Screw	5.89
SPDT—10 AMP @ 250VAC; 1/2HP @ 250VAC					
7509K5	On*	Off	On*	Screw	6.21

*Momentary Contact



EATON 351 SERIES 3/4" SQUARE SEALED ILLUMINATED PUSHBUTTON SWITCHES FOR T-1 1/4" WEDGE BASE INCANDESCENT LAMP (LESS LAMP)

FEATURES:

- Industrial-Commercial-Military use
- Meets requirements of MIL-S-22885
- Suitable for Application in Oiltight NEMA 4 and 13 enclosures
- Meets Double Insulating Requirements
- U.L. Recognized and C.S.A. Certified
- Front Panel Relampable
- Removable from Front of Panel
- Illuminated or Non-Illuminated

351 SERIES SPECIFICATIONS:

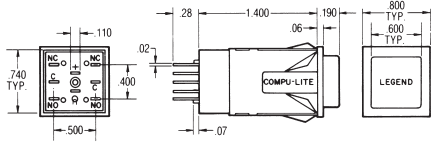
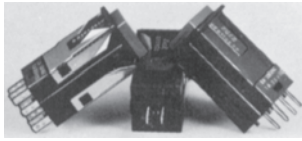
- Action:** Momentary; Alternate positive latch down. Break before make.
- Switch Circuitry:** Silver contacts, 10 Amps @ 125VAC or 250VAC; Gold contacts, 0.1 Amp @ 125VAC/DC; UL recognized, CSA certified.
- Switch Electrical Ratings:** Panel sealed by gasket; Switch sealed inside; Meets requirements of MIL-S-22885, splashproof; Suitable for application in oiltight NEMA 4 and 13 enclosures; Will operate with pushbutton under 1/2" column of water. .020" x .110" terminations suitable for solder or female 110 connectors.
- Sealing:** 3/4" square.
- Termination Type:** Front panel mounting; Stainless steel retaining clips; .040" to .188" panel thickness; Tighten from front or rear of panel; Military type mounting hardware.
- Pushbutton:** Front relampable; Lamp stationary to reduce mechanical shock to filament.
- Mounting:** .190".
- Lamp:**
- Pushbutton Travel:**

Cat. No.	Switch		Net Price
	Terminations	Circuit	
Solder Tab	Action	Circuit	

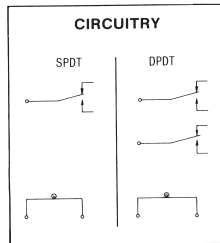
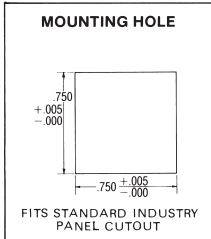
351 SERIES SEALED PANEL MOUNT BASE ASSEMBLIES (5AMP SILVER CONTACTS)			
351K11810	Momentary	SPDT	\$44.32
351K12810	Momentary	DPDT	32.68
351K21810	Alternate	SPDT	65.52
351K22810	Alternate	DPDT	32.94

PUSHBUTTON CAPS FOR 351 SERIES

Cat. No.	Translucent Colour	Net Price
MATTE FINISH		
250PM00A	Orange	\$1.63
250PM01A	White	1.63
250PM02A	Red	1.63
250PM03A	Green	1.63



221 PANEL MOUNT



EATON 221 SERIES ILLUMINATED PUSHBUTTON SWITCHES 5/8" SQUARE ILLUMINATED PUSHBUTTON SWITCHES

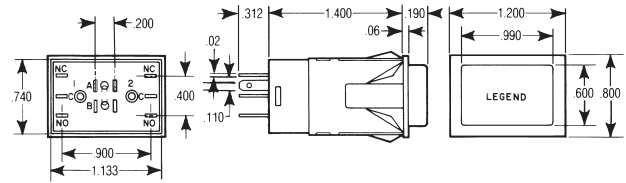
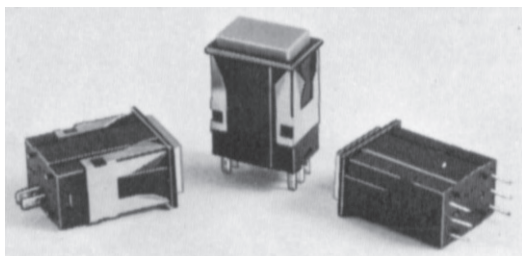
221 SERIES SPECIFICATIONS:

- Action:** Momentary; Alternate with positive latch down. Break before make.
- Switch Circuitry:** Silver contacts, 5 Amps @ 125VAC or 250VAC; Gold contacts, 1 Amp @ 125VAC or 30VDC; UL listed, CSA certified.
- Switch Electrical Ratings:** .025" x .110" suitable for solder or female 110 connectors, .020" x .025" for printed circuit board mount.
- Termination Types:** .025" x .110" suitable for solder or female 110 connectors, .020" x .025" for printed circuit board mount.
- Pushbuttons:** 5/8" square.
- Mounting:** Snap in panel mounting; stainless steel retaining clips; .040" x .188" panel thickness; PC board mounting.
- Lamps:** Front relampable; lamp stationary to reduce mechanical shock to filament.
- Pushbutton Travel:** .190".

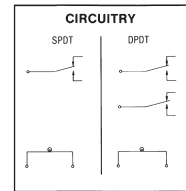
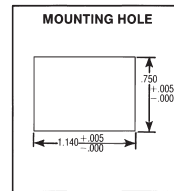
Cat. No. Terminations Solder Tab	Switch Action	Switch Circuit	Contacts		Net Price
			Material	Amps.	
221 SERIES PANEL MOUNT SWITCH BASE ASSEMBLIES					
221K11810	Momentary	SPDT	Silver	5	\$14.19
221K11910	Momentary	SPDT	Gold	.1	14.78
221K12810	Momentary	DPDT	Silver	5	16.39
221K12910	Momentary	DPDT	Gold	.1	21.11
221K21810	Alternate	SPDT	Silver	5	14.62
221K22810	Alternate	DPDT	Silver	5	18.09
221K22910	Alternate	DPDT	Gold	.1	21.47

PUSHBUTTON CAPS FOR 221 SERIES

Cat. No.	Colour	Net Price
MATTE FINISH		
220PM00A	Orange	\$1.63
220PM01A	White	1.63
220PM02A	Red	1.50
220PM03A	Green	1.63



200, 201, 206 PANEL MOUNT



EATON 200, 201, 206 5/8" x 1" RECTANGULAR, NON-ILLUMINATED, ILLUMINATED PUSHBUTTON SWITCHES

200, 201, 206 SERIES SPECIFICATIONS:

- Action:** Momentary; Alternate with positive latch down. Break before make.
- Switch Circuitry:** Silver contacts, 5 Amps @ 125VAC or 250VAC; Gold contacts, 1 Amp @ 125VAC or 30VDC; UL listed, CSA certified.
- Switch Electrical Ratings:** .020" x .110" terminations suitable for solder or female 110 connectors, .020" x .025" terminations for printed circuit board mount.
- Termination Types:** .020" x .110" terminations suitable for solder or female 110 connectors, .020" x .025" terminations for printed circuit board mount.
- Pushbuttons:** 5/8" x .188" panel thickness; PC board mounting.
- Lamps:** Front relampable; lamp stationary to reduce mechanical shock to filament.
- Pushbutton Travel:** .190".

EATON 5/8" x 1" RECTANGULAR NON-ILLUMINATED PUSHBUTTON SWITCHES

Cat. No. Terminations Solder Tab	Switch Action	Switch Circuit	Contacts		Net Price
			Material	Amps.	
200 SERIES PANEL MOUNT SWITCH BASE ASSEMBLIES					
200K11810	Momentary	SPDT	Silver	5	\$12.29

EATON 5/8" x 1" RECTANGULAR ILLUMINATED PUSHBUTTON SWITCHES FOR T-1 1/4 WEDGE BASE INCANDESCENT LAMP (LESS LAMP)

Cat. No. Terminations Solder Tab	Switch Action	Switch Circuit	Contacts		Net Price
			Material	Amps.	
201 SERIES DUAL-LAMP PANEL MOUNT SWITCH BASE ASSEMBLIES					
201K12810	Momentary	DPDT	Silver	5	\$17.98
201K22810	Alternate	DPDT	Silver	5	19.14

EATON 5/8" x 1" RECTANGULAR ILLUMINATED PUSHBUTTON SWITCHES FOR TWO T-1 1/4 WEDGE BASE INCANDESCENT LAMPS (LESS LAMPS)

Cat. No. Terminations Solder Tab	Switch Action	Switch Circuit	Contacts		Net Price
			Material	Amps.	
206 SERIES DUAL-LAMP PANEL MOUNT SWITCH BASE ASSEMBLIES					
206K12810	Momentary	DPDT	Silver	5	\$21.47
206K22810	Alternate	DPDT	Silver	5	21.90

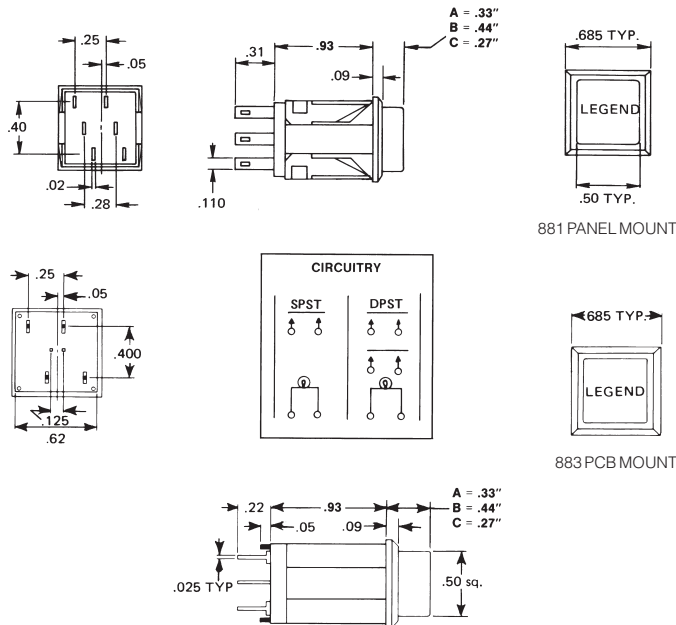
SOLID COLOUR PUSHBUTTON CAPS FOR 200, 201, 206 SERIES

Cat. No.	Colour	Net Price
200PM00A	Orange	\$1.63
200PM01A	White	1.63
200PM02A	Red	1.63
200PM03A	Green	1.50
200PM04A	Yellow	1.63
200PM05A	Blue	1.63

Continued on next page....

HORIZONTAL SPLIT LENS PUSHBUTTON CAPS FOR 206 SERIES

Cat. No.	Colour	Net Price
206PM0201S	Red/White	\$5.33
206PM0203S	Red/Green	5.33
206PM0301S	Green/White	5.55



EATON ILLUMINATED PUSHBUTTON SWITCHES EATON 881, 883 SERIES 1/2" SQUARE ILLUMINATED PUSHBUTTON SWITCHES FOR T-1 3/4" BI PIN BASE INCANDESCENT LAMPS (LESS LAMPS)

881, 883 SERIES SPECIFICATIONS:

- Action:** Illuminated panel mount. Momentary; Alternate with positive latch down.
- Electrical Ratings:** Silver contacts, 6 Amp @ 125VAC or 3 Amps @ 250VAC; UL listed.
- Terminations:** .025" x .110" suitable for solder or female 110 connectors; epoxy sealed.
- Pushbuttons:** 1/2" square, height "A" above bezel, 0.24".
- Mounting:** Snap in panel mounting in 0.625" square cutout; 1/16" to 3/16" panel thickness; stainless steel retaining clips.
- Lamps:** Front relampable; lamp stationary to reduce mechanical shock to filament.
- Pushbutton Travel:** 0.220".

EATON 1/2" SQUARE ILLUMINATED PUSHBUTTON SWITCHES FOR T-1 3/4" BI PIN BASE INCANDESCENT LAMPS (LESS LAMPS)

Cat. No. Termination Solder Tab	Switch Action	Switch Circuit	Contacts		Net Price
			Material	Amps	
881 SERIES PANEL MOUNT SWITCH BASE ASSEMBLIES					
881K11810	Momentary	SPST	Silver	6	\$11.40
881K21810	Alternate	SPST	Silver	6	12.27
881K23810	Alternate	DPST	Silver	6	16.69
886L10	Matching Indicator for 881 Series				17.53

PUSHBUTTON CAPS FOR 881/883 SERIES

Cat. No.	Lens Colour	Lens Finish	Net Price
880PM00A	Orange	Matte	\$1.50
880PM01A	White	Matte	1.41
880PM02A	Red	Matte	1.50
880PM03A	Green	Matte	1.50
880PM04A	Yellow	Matte	1.50
880PT00A	Orange	Translucent	1.50
880PT01A	White	Translucent	1.41
880PT02A	Red	Translucent	1.50
880PT03A	Green	Translucent	1.50
880PT04A	Yellow	Translucent	1.50
880PT05A	Blue	Translucent	1.50

NOTE: For 120VAC operation use 7A1H neon lamp; requires external 47K resistor.

CUSTOM ENGRAVED LEGENDS

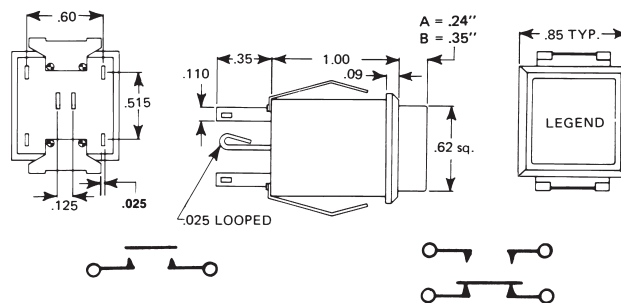
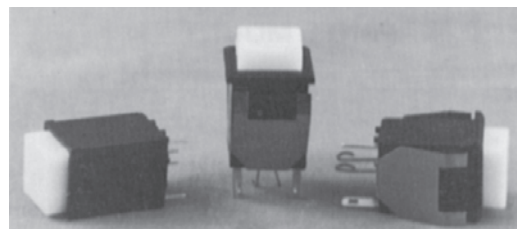
Electro Sonic provides custom engraving of all plastic indicator and pushbutton caps supplied from our stock. Delivery in 7 to 10 days. When ordering, full details should be provided on a drawing or sketch. Specify whether black or white letters are desired. Black letters are suggested on light colours such as white, orange, and yellow; white letters are more effective on red, green, and blue. Prices are as follows:

ENGRAVING PER BUTTON*

Cat. No.	
1 LINE	
2 LINE	
3 LINE	

*Quantity prices apply only when all buttons are the same, with the same legend on each button. Split legends (two separate inserts in one cap) are charged as two caps.

NOTE: Contact your Electro Sonic sales representative for pricing.



EATON 850 SERIES 5/8" SQUARE ILLUMINATED PUSH-BUTTON SWITCHES FOR T-1 3/4" BI PIN BASE INCANDESCENT LAMPS (LESS LAMPS)

850 SERIES SPECIFICATIONS:

- Action:** Illuminated panel mount. Momentary. Electrical Ratings: Gold contacts, 0.25 Amp @ 125VAC or 30VDC.
- Terminations:** .025" x .110" suitable for solder or female 110 connectors; epoxy sealed.
- Pushbuttons:** 5/8" square; height "A" above bezel, 0.18".
- Mounting:** Snap in panel mounting in 0.755" square cutout; 1/16" to 3/16" panel thickness; stainless steel retaining clips.
- Lamps:** Front relampable; lamp stationary to reduce mechanical shock to filament.
- Pushbutton Travel:** 0.090".

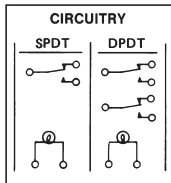
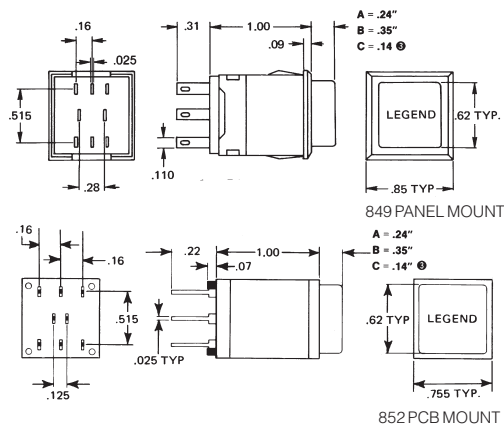
Continued on next page....

Cat. No. Termination Solder Tab	Switch Action	Switch Circuit	Contacts		Net Price
			Material	Amps	
850 SERIES PANEL MOUNT SWITCH BASE ASSEMBLIES					
850K15910	Momentary	DPSTNO/NC	Gold	.25	\$20.09

PUSHBUTTON CAPS FOR 850 SERIES

Cat. No.	Lens Colour	Lens Finish	Net Price
850PT01A	White	Translucent	\$2.43
850PT02A	Red	Translucent	1.43
850PT03A	Green	Translucent	1.43
850PT04A	Yellow	Translucent	2.45

Note: For 120VAC operation use **7A1H** neon lamp; requires external 47K resistor.



EATON ILLUMINATED PUSHBUTTON SWITCHES

EATON 849, 852 SERIES 3/8\" SQUARE ILLUMINATED PUSHBUTTON SWITCHES

FOR T-1 3/4\" BI SPIN BASE INCANDESCENT LAMPS (LESS LAMPS)

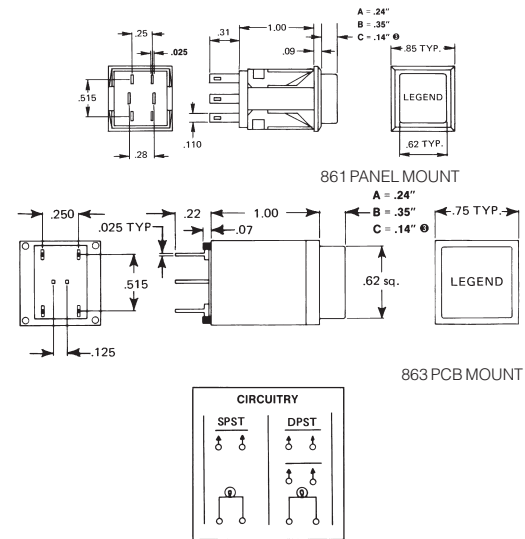
849, 852 SERIES SPECIFICATIONS:

- Action:** Illuminated panel mount. Momentary; Alternate with positive latch down.
- Electrical Ratings:** Silver contacts, 3 Amps @ 125VAC or 250VAC; Gold contacts, 0.25 Amp @ 125VAC or 30VDC; UL listed, CSA certified.
- Terminations:** .025" x 1.10" suitable for solder or female 110 connectors; epoxy sealed.
- Pushbuttons:** 3/8" square; height "A" above bezel, 0.24".
- Mounting:** Snap in panel mounting in 0.755" square cutout; 1/16" to 3/16" panel thickness; stainless steel retaining clips; barrier mount available.
- Lamps:** Front relampable; lamp stationary to reduce mechanical shock to filament.
- Pushbutton Travel:** 0.220".

Cat. No. Termination Solder Tab	Switch Action	Switch Circuit	Contacts		Net Price
			Material	Amps	
849 SERIES PANEL MOUNT SWITCH BASE ASSEMBLIES					
849K11810	Momentary	SPDT	Silver	3	\$28.48
849K11811*	Momentary	SPDT	Silver	3	16.62
849K12810	Momentary	DPDT	Silver	3	24.76
849K12811*	Momentary	DPDT	Silver	3	24.76
849K21810	Alternate	SPDT	Silver	3	19.91
849K22810	Alternate	DPDT	Silver	3	27.50
849K22811*	Alternate	DPDT	Silver	3	27.50
845L10	Matching Indicator for 849 Series				10.07

Cat. No.	Lens Colour	Lens Finish	Net Price
849PM00A	Orange	Matte	\$2.25
849PM01A	White	Matte	2.25
849PM02A	Red	Matte	2.43
849PM03A	Green	Matte	2.43
849PM04A	Yellow	Matte	2.43
849PM05A	Blue	Matte	2.43
849PT00A	Orange	Translucent	2.43
849PT01A	White	Translucent	2.43
849PT02A	Red	Translucent	2.25
849PT03A	Green	Translucent	2.52
849PT04A	Yellow	Translucent	2.43
849PT05A	Blue	Translucent	2.43

*These switches have vertical barriers included in the mounting.
Note: For 120VAC operation use **7A1H** neon lamp; requires external 47K resistor.



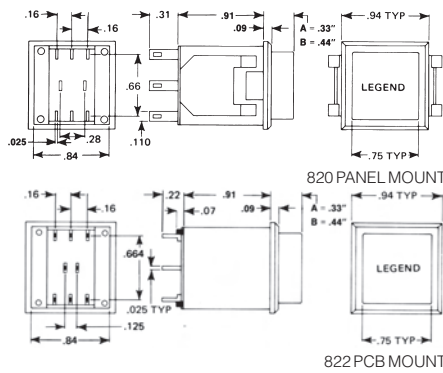
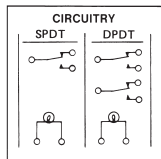
861, 863 SERIES SPECIFICATIONS:

- Action:** Illuminated panel mount. Momentary; Alternate with positive latch down.
- Electrical Ratings:** Silver contacts, 6 Amps @ 125VAC or 3 Amps @ 250VAC; Gold contacts, 0.25 Amp @ 125VAC or 30VDC; UL listed.
- Terminations:** .025" x 1.10" suitable for solder or female 110 connectors; epoxy sealed.
- Pushbuttons:** 3/8" square; height "A" above bezel, 0.24".
- Mounting:** Snap in panel mounting in 0.755" square cutout; 1/16" to 3/16" panel thickness; stainless steel retaining clips; barrier mount available.
- Lamps:** Front relampable; lamp stationary to reduce mechanical shock to filament.
- Pushbutton Travel:** 0.220".

Cat. No. Solder Tab Termination	Switch Action	Switch Circuit	Contacts		Net Price
			Material	Amps	
861 SERIES PANEL MOUNT SWITCH BASE ASSEMBLIES					
861K11810	Momentary	SPST	Silver	6	\$13.69
861K13810	Momentary	DPST	Silver	6	15.49
861K21810	Alternate	SPST	Silver	6	17.50
861K23810	Alternate	DPST	Silver	6	19.79
845L10	Matching Indicator for 861 Series				10.07

PUSHBUTTON CAPS FOR 861/863 SERIES

Cat. No.	Lens Colour	Lens Finish	Net Price
849PM00A	Orange	Matte	\$2.25
849PM01A	White	Matte	2.25
849PM02A	Red	Matte	2.43
849PM03A	Green	Matte	2.43
849PM04A	Yellow	Matte	2.43
849PM05A	Blue	Matte	2.43
849PT00A	Orange	Translucent	2.43
849PT01A	White	Translucent	2.43
849PT02A	Red	Translucent	2.25
849PT03A	Green	Translucent	2.52
849PT04A	Yellow	Translucent	2.43
849PT05A	Blue	Translucent	2.43



ILLUMINATED PUSHBUTTON SWITCHES

820, 822 SERIES SPECIFICATIONS:

Action: Illuminated panel mount.
Momentary; Alternate with positive latch down.

Electrical Ratings: Silver contacts, 3 Amps @ 125VAC or 250VAC; Gold contacts, 0.25 Amp @ 125VAC or 30VDC; UL listed, CSA certified.

Terminations: .025" x .110" suitable for solder or female 110 connectors; epoxy sealed.

Pushbuttons: 3/4" square; height "A" above bezel, 0.24".

Mounting: Snap-in panel mounting in .0875" square cutout; 1/16" to 3/16" panel thickness; stainless steel retaining clips; barrier mount available.

Lamps: Front relampable; lamp stationary to reduce mechanical shock to filament.

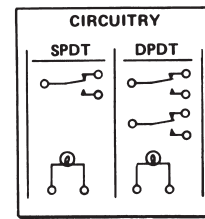
Pushbutton Travel: 0.220".

Cat. No. Termination Solder Tab	Switch Action	Switch Circuit	Contacts		Net Price
			Material	Amps	
820 SERIES PANEL MOUNT SWITCH BASE ASSEMBLIES					
820K11810	Momentary	SPDT	Silver	3	\$21.90
820K12810	Momentary	DPDT	Silver	3	28.36
825L10	Matching Indicator for 820 Series				13.04

PUSHBUTTON CAPS FOR 820/822 SERIES

Cat. No.	Lens Colour	Lens Finish	Net Price
820PM01A	White	Matte	\$3.99
820PM02A	Red	Matte	3.99
820PM03A	Green	Matte	3.99
820PM04A	Yellow	Matte	3.99
820PT00A	Orange	Translucent	3.99
820PT01A	White	Translucent	3.99
820PT03A	Red	Translucent	3.99
820PT04A	Yellow	Translucent	3.99

Note: Use 7A1H neon lamp; requires external 35k resistor.
Note: For 120VAC use 7A1H neon lamp; requires external 47k resistor.



810, 812 SERIES SPECIFICATIONS:

Action: Illuminated panel mount.
Momentary; Alternate with positive latch down.

Electrical Ratings: Silver contacts, 3 Amps @ 125VAC or 250VAC; Gold contacts, 0.25 Amp @ 125VAC or 30VDC; UL listed, CSA certified.

Terminations: .025" x .110" suitable for solder or female 110 connectors; epoxy sealed.

Pushbuttons: 3/4" x 1" rectangular; height "A" above bezel, 0.24".

Mounting: Snap in panel mounting in 0.875" x 1.10" cutout; 1/16" to 3/16" panel thickness; stainless steel retaining clips; barrier mount available.

Lamps: Front relampable; lamp stationary to reduce mechanical shock to filament.

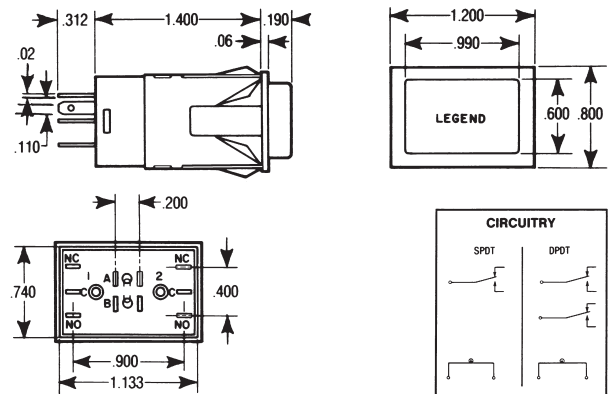
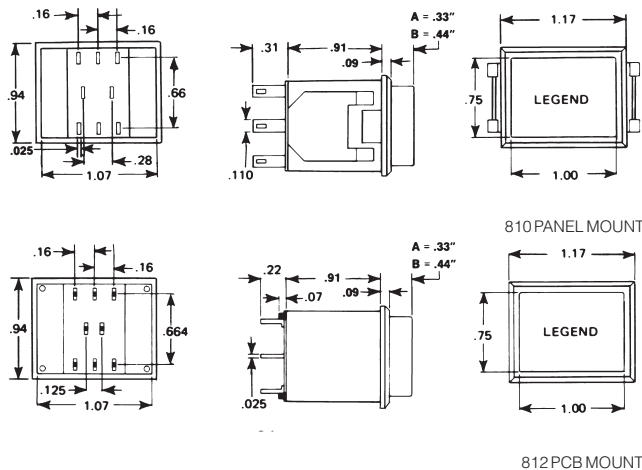
Pushbutton Travel: 0.220".

Cat. No. Termination Solder Tab	Switch Action	Switch Circuit	Contacts		Net Price
			Material	Amps	
810 SERIES PANEL MOUNT SWITCH BASE ASSEMBLIES					
810K11810	Momentary	SPDT	Silver	3	\$20.95
810K12810	Momentary	DPDT	Silver	3	26.91
810K21810	Alternate	SPDT	Silver	3	24.08
810K22810	Alternate	DPDT	Silver	3	30.11
815L10	Matching Indicator for 810 Series				10.41

PUSHBUTTON CAPS FOR 810/812 SERIES

Cat. No.	Lens Colour	Finish	Net Price
810PM01A	White	Matte	\$3.99
810PM02A	Red	Matte	3.99
810PM03A	Green	Matte	3.99
810PM04A	Yellow	Matte	3.99
810PT00A	Orange	Translucent	3.99
810PT01A	White	Translucent	3.72
810PT02A	Red	Translucent	3.72
810PT03A	Green	Translucent	3.72
810PT04A	Yellow	Translucent	3.72

Note: Use 7A1H neon lamp; requires external 35k resistor.
Note: For 120VAC operation use 7A1H neon lamp; requires external 35K resistor.



Continued on next page....

EATON ILLUMINATED PUSHBUTTON SWITCHES

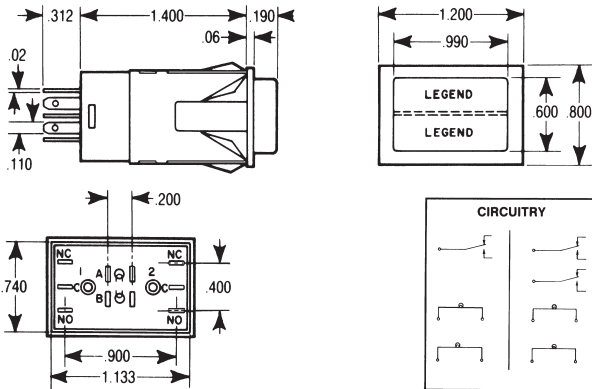
301 SERIES SPECIFICATIONS:

Action: Momentary; Alternate with positive latch down.
Switch Circuitry: Break before make; SPDT or DPDT.
Electrical Ratings: Silver contacts, 10 Amps @ 125VAC or 5 Amps @ 250VAC; CSA certified.
Termination Types: .020" x .110" terminations suitable for solder or female 110 connectors; .020" x .025" terminations for PC board mount.
Pushbuttons: 5/8" x 1" rectangular.
Mounting: Snap-in panel mounting; stainless steel retaining clips; .030" to .188" panel thickness; PC board mounting; Barrier mounting available.
Lamps: Front relampable; Lamp stationary to reduce mechanical shock to filament.
Pushbutton Travel: .190".

Cat. No. Solder Tab Terminations	Switch Action	Switch Circuit	Net Price
--	------------------	-------------------	-----------

301 SERIES SEALED PANEL MOUNT SWITCH BASE ASSEMBLIES (10 AMP SILVER CONTACTS)

301K12810	Momentary	DPDT	\$23.22
301K22810	Alternate	DPDT	46.33



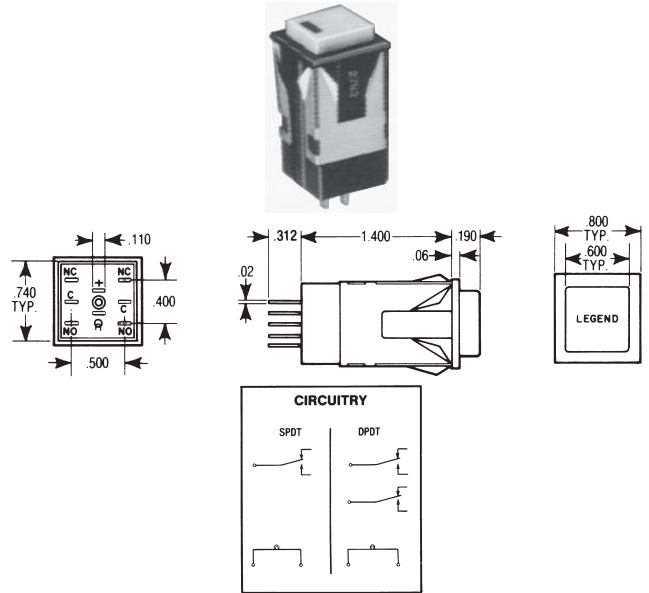
306 SERIES SPECIFICATIONS:

Action: Momentary; Alternate with positive latch down.
Switch Circuitry: Break before make; SPDT or DPDT; 2 independent lamp circuits.
Electrical Ratings: Silver contacts, 10 Amps @ 125VAC, 5 Amps @ 250VAC; CSA certified.
Termination Types: .020" x .110" terminations suitable for solder or female 110 connectors; .020" x .025" terminations for PC board mount.
Pushbuttons: 5/8" x 1" rectangular; full or horizontal split lens.
Mounting: Snap-in panel mount; stainless steel retaining clips; .030" to .188" panel thickness; barrier mount available.
Lamp: Front relampable; lamps stationary to reduce mechanical shock to filament. Lamp No. T-1-3/4 Wedge Base.
Pushbutton Travel: .190".

Cat. No. Solder Tab Terminations	Switch Action	Switch Circuit	Net Price
--	------------------	-------------------	-----------

306 SERIES SEALED PANEL MOUNT SWITCH BASE ASSEMBLIES (10 AMP SILVER CONTACTS)

306K21810	Alternate	SPDT	\$21.24
208L10	Matching indicator for 306 Series		12.22



EATON 321 SERIES 5/8" SQUARE ILLUMINATED PUSHBUTTON SWITCHES

321 SERIES SPECIFICATIONS:

Action: Momentary; alternate with positive latch down.
Switch Circuitry: Break before make; SPDT or DPDT.
Electrical Ratings: Silver contacts, 10 Amps @ 125VAC, 5 Amps @ 250VAC; CSA certified.
Termination Types: .020" x .110" terminations suitable for solder or female 110 connectors; .020" x .025" terminations for printed circuit board mount.
Pushbuttons: 5/8" square.
Mounting: Snap-in panel mounting; stainless steel retaining clips; .030" to .188" panel thickness; barrier mount available.
Lamps: Front relampable; lamps stationary to reduce mechanical shock to filament.
Pushbutton Travel: .90".

Cat. No. Solder Tab Terminations	Switch Action	Switch Circuit
--	------------------	-------------------

321 SERIES SEALED PANEL MOUNT SWITCH BASE ASSEMBLIES (10 AMP SILVER CONTACTS)

321K12810	Momentary	DPDT
321K21810	Alternate	SPDT
321K22810	Alternate	DPDT
224L10	Matching indicator lamp	

NOTE: Contact your Electro Sonic sales representative for pricing.



EATON NEW GENERATION ROCKER (NGR) SERIES SWITCHES

This line of full sized rocker switches, initially developed for Heavy Truck Industry, offers European styling, ergonomic design, with the solid durability you've come to expect from our switches. Illuminated and non-illuminated versions are available. The illuminated version can accommodate two dependent or independent lamps with a full range of popular switching circuits. Illumination is supplied either through snap-in lenses or via a single piece back-lit rocker. Rocker and bezels for the NGR Series are molded in a soft matte finish. The illuminated single piece back-lit versions have four small "dimples" molded across the top of their rockers in order to ensure a positive tactile feel during actuation. Bulb voltage for illuminated switches: 14VDC. Ratings: 15 amps @ 125V ac, 10 amps @ 250V ac, 15 amps @ 28V dc. Terminal type: Standard .250" spade, silver-plated copper alloy. Base material: High grade thermoplastic molded material, black. Dielectric: 1000 volts RMS, minimum. Mounting: Snap-in. Order base, rocker and lens separately.

Continued on next page....

Cat. No.	Switch Action	Switch Circuit	Lamps	Net Price
NGR10011BN00N	On-None-Off	SPST	—	\$5.76
NGR10031BN00N	On-None-On	SPDT	—	6.39
NGR10041BN00N	On-Off-On	SPDT	—	6.39
NGR10051BN00N	Mom On-Off-Mom On	SPDT	—	6.42
NGR20011BN00N	On-None-Off	DPST	—	7.30
NGR20031BN00N	On-None-On	DPDT	—	8.46
NGR20041BN00N	On-Off-On	DPDT	—	8.46
NGR20051BN00N	On-None-Off	DPDT	—	8.55
NGR15011BNA0N	On-None-Off	SPST	1	9.52
NGR15481BNAAN	On-None-On	SPDT	2	11.47
NGR15681BNAAN	On-Off-On	SPDT	2	11.47
NGR15881BNAAN	Mom On-Off-Mom On	SPDT	2	11.50
NGR25011BNA0N	On-None-Off	DPST	1	11.04
NGR25481BNAAN	On-None-On	DPDT	2	12.74
NGR25681BNAAN	On-Off-On	DPDT	2	13.69

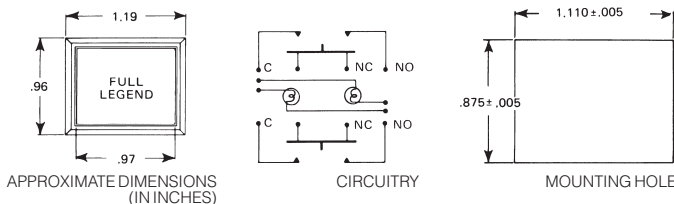
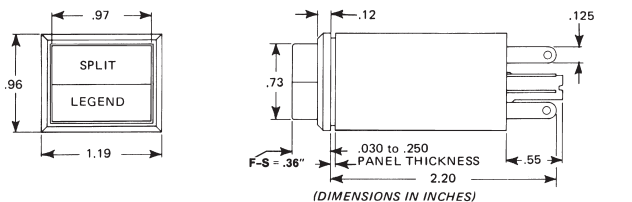
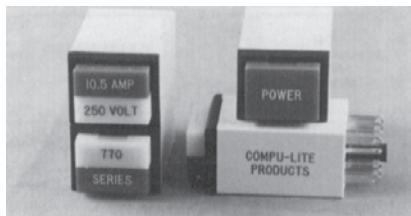
NOTE: 14VDC and 28VDC are available in incandescent clear and LED.

ACCESSORIES FOR NGR SERIES

Cat. No.	Description	Net Price
1D0000000000	Two face rocker button, black, no lamp	\$.66
2A0005000000	Two face rocker button, black, 1 lamp (Top)	.66
2B0000000050	Two face rocker button, black, 1 lamp (Bottom)	.63
2C0005000050	Two face rocker button, black, 2 lamps	.66

SERIES NGR ROCKER SWITCH LENSES

Cat. No.	Description	Net Price
28-5863-2	Red snap-in lens	\$.23
28-5863	Green snap-in lens	.25
28-5863-3	Amber snap-in lens	.25
28-5863-9	Blue snap-in lens	.25
28-5863-8	White snap-in lens	.27



ILLUMINATED PUSHBUTTON SWITCHES

770 SERIES SPECIFICATIONS:

- Action:** Snap action power switch. Illuminated panel mount. Momentary; Alternate with positive latch down.
- Electrical Ratings:** Silver contacts; 10.5 Amps @ 125VAC or 250VAC; UL listed, CSA certified.
- Terminations:** .025" x .125" suitable for solder or female disconnects; epoxy sealed.
- Pushbuttons:** 0.73" x 0.97" rectangular; height "F" above bezel, 0.24"; translucent colours, matte finish only; full legend.
- Mounting:** Snap in panel mounting retained by molded sleeve and nut; may be individually mounted or gang mounted in horizontal or vertical rows; mounting hole 1.110" x 0.875"; panel thickness 0.030" to 0.250"; barrier mount available.
- Lamps:** Two independent lamp circuits; accepts two T-1 1/4 midget flange base lamps, incandescent or neon; front relampable.
- Pushbutton Travel:** 0.220".

.73" X .97" RECTANGULAR ILLUMINATED PUSHBUTTON SWITCHES FOR TWO T-1 1/4 MIDGET FLANGE BASE LAMPS

Cat. No.	Switch Action	Switch Circuit	Mounting Barriers	Net Price
770K11810	Momentary	SPDT	No	\$50.42
770K11811	Momentary	SPDT	Vertical	50.42
770K12810	Momentary	DPDT	No	61.19
770K12811	Momentary	DPDT	Vertical	61.19
770K21810	Alternate	SPDT	No	58.11
770K21811	Alternate	SPDT	Vertical	56.75
770K22810	Alternate	DPDT	No	69.78
770K22811	Alternate	DPDT	Vertical	69.76
775L10	Matching Indicator for 770 Series			36.93

PUSHBUTTON CAPS FOR 770 SERIES

Cat. No.	Lens Colour	Cap Height	Net Price
MATTE FINISH			
770PM00F	Orange	Full .36"	\$14.51
770PM01F	White	Full .36"	14.49
770PM02F	Red	Full .36"	14.49
770PM03F	Green	Full .36"	14.51
770PM0203S	Red/Green	Split .36"	18.18

Note: For 120VAC operation use 7A1H neon lamp; requires external 47k resistor.



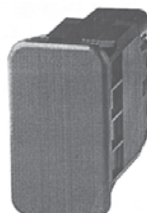
BELOW PANEL ROCKER SWITCH



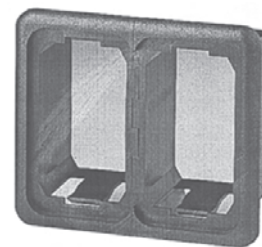
PADDLE ACTUATOR SWITCH



ABOVE PANEL ROCKER SWITCH



PANEL PLUG



GANG MOUNT SYSTEM

EATON SEALED VEHICLE ROCKER SWITCHES—SVR SERIES

Eaton Sealed Vehicle Rocker (SVR) Switch series now includes an above panel actuator (see pictures above). Original design below panel rocker and paddle actuator styles are also available. The SVR switch family offers design flexibility by offering a wide range of circuits and actuator types as well as the distinct look and feel typical of Eaton's switch product. All SVR designs are sealed at the front and back of the switch and now meet the rigorous sealing requirements of IP68. When specified, the above panel rocker switch uses a panel seal to prevent debris and moisture from ingress behind the panel. SV is designed to meet the severe environmental requirements of construction and agricultural markets. **SPECIFICATIONS:** Electrical ratings: 50,000 cycles @ 12A at either 12 or 24VDC. Dielectric strength: 1500V RMS, minimum. Circuits: Up to 2-pole, 3-position, with momentary and maintained capabilities. Mechanical life: 250,000 operation minimum. Terminal type: Standard 0.110" (2.8mm) tin-plated copper alloy spade terminal. Mounting means: Snap-in mounting with plastic bezel. Mounting hole: Standard panel cutout of 36.85mm x 21.08mm. Sealing: Moisture resistant to IP68. Rocker: SVR now offers three actuator types, the new above panel actuator style, as well as the original rocker and paddle actuators, both used in the below panel frame. Lighting: Each switch is capable of accommodating two LEDs which can be oriented to be either circuit dependent or independent. Snap-in lenses are available in four standard colours, white, amber, green, and red. **OPTIONS:** Additional colours of rockers, mounting bezels and lenses are available. Special circuits. Special ratings. Pad-printed legends on lens, rocker and bezel. Low current capabilities. Custom back-lit legends available. Gang mount system available. Panel seal for above panel actuator.

Continued on next page....

Cannon Pushbutton Switches



C&K RAFIX 16 SERIES PUSHBUTTONS AND E-STOPS

High quality, long-life momentary and maintained pushbutton switches and E-stops. Threaded rings included, fits standard 0.638" (16,20) mounting hole dia. Large actuation surface and innovative snap together design—easy assembly. Operating life 100,000 to 2,000,000 depending upon operation. Operating temperature: -25°C to +55°C. Filament lamp. Housing: PA with solder terminals. IP65 protection. For complete assembly, order actuator, contact block and lamp (lighted pushbutton). Additional colours, actuators, and LED lamps available.

Cat. No.	Description	Net Price
NON-ILLUMINATED SQUARE PUSHBUTTON SWITCHES WITH FLUSH LENS		
1.30070.251/0215	White	\$9.85
1.30070.251/0301	Red	9.85
1.30070.251/0403	Yellow	9.85
1.30070.251/02525	Green	9.85
1.30070.251/06175	Blue	9.85

CONTACT BLOCK FOR NON-ILLUMINATED SQUARE PUSHBUTTONS		
1.20122.021/0000	Momentary, 1NC & 1NO, 250V/6A	13.13
1.20122.022/0000	Momentary, 2NO, 250V/6A	13.13
1.20122.023/0000	Momentary, 2NC, 250V/6A	13.13
1.20122.061/0000	Latching, 1NC & 1NO, 250V/6A	16.35
1.20122.062/0000	Latching, 2NO, 250V/6A	16.35

ILLUMINATED SQUARE PUSHBUTTON SWITCHES WITH FLUSH LENS		
1.30070.001/1002	Colourless	13.03
1.30070.001/1306	Red	13.03
1.30070.001/1403	Yellow	13.03
1.30070.001/1505	Green	13.03
1.30070.001/1607	Blue	13.03

CONTACT BLOCK FOR ILLUMINATED SQUARE PUSHBUTTONS		
1.20122.001/0000	Momentary, 1NC & 1NO, 250V/6A	16.35
1.20122.002/0000	Momentary, 2NO, 250V/6A	16.35
1.20122.003/0000	Momentary, 2NC, 250V/6A	16.35
1.20122.041/0000	Latching, 1NC & 1NO, 250V/6A	16.35
1.20122.042/0000	Latching, 2NO, 250V/6A	24.63

FILAMENT LAMPS		
1.90120.013/0000	6V/1.2W	2.62
1.90120.012/0000	12V/1.2W	2.62
1.90120.011/0000	24V/1.2W	3.01
1.90120.010/0000	48V/1.2W	4.38

NON-ILLUMINATED EMERGENCY STOP PUSHBUTTONS		
1.30074.821/0000	Red pushbutton, yellow collar, dupe proof	37.33

CONTACT BLOCK FOR EMERGENCY STOP PUSHBUTTONS		
1.20123.021/0000	Momentary, 1NC & 1NO, 250V/6A	16.52
1.20123.022/0000	Momentary, 1NC, 250V/6A	11.67
1.20123.023/0000	Momentary, 1NO, 250V/6A	11.67
1.20123.024/0000	Momentary, 2NC, 250V/6A	16.52
1.20123.025/0000	Momentary, 2NO, 250V/6A	16.52



C&K 8.1 LIGHTED PUSHBUTTON SWITCHES AND INDICATORS

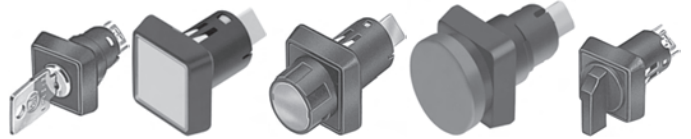
Extremely compact design, fits 0.319" (8,1) mounting hole dia., mounts with threaded ring. Round and square bezels available, colour: black. Rating: 250mA at 42V AC or DC. Electrical Life: 10⁶ operations min. Operating Temperature: -25°C to +55°C Lamp: T1 Incandescent. Housing: Polyamid, with solder terminals. Complete assembly length: 1.57" (40). For complete assembly, order switching housing, keycap or lens, and lamp separately, below. Other keycap/lens colours, LED lamps also available. Momentary switches are SPST N.O.; maintained are SPST.

Cat. No.	Description	Net Price Each		
		1-499	500-2499	2500-Up
8.1mm SWITCH HOUSINGS				
1.15116.001	Round, momentary	\$17.64	\$10.55	\$10.22
1.15116.011	Round, maintained	18.63	11.12	10.78
1.15116.021	Square, momentary	18.63	11.12	10.78
1.15116.031	Square, maintained	18.63	11.12	10.78
1.65120.001	Round, Indicator lamp	6.57	3.92	3.80
1.65120.011	Square, Indicator lamp	6.57	3.92	3.80

KEYCAP—SWITCHES ONLY				
5.05510.470/1002	Round, colourless	1.89	1.12	1.09
5.05510.470/1303	Round, red	1.89	1.12	1.09
5.05510.470/1502	Round, green	1.89	1.12	1.09
5.05510.471/1002	Square, colourless	1.89	1.12	1.09
5.05510.471/1303	Round, red	1.89	1.12	1.09
5.05510.471/1502	Round, green	1.89	1.12	1.09

LENS—INDICATORS ONLY				
5.05510.359/1002	Round, colourless	1.89	1.12	1.09
5.05510.359/1303	Round, red	1.89	1.12	1.09
5.05510.359/1502	Round, green	1.89	1.12	1.09
5.05510.360/1002	Square, colourless	1.89	1.12	1.09
5.05510.360/1303	Square, red	1.89	1.12	1.09
5.05510.360/1502	Square, green	1.89	1.12	1.09

T1 LAMPS				
1.90180.471	6V Incandescent	6.11	3.85	3.73
1.90180.472	12V Incandescent	6.60	4.21	4.84
1.90180.473	24V Incandescent	8.90	5.61	5.44



C&K LUMOTAST 25 SERIES 16mm SWITCHES

Illuminated, rotary, emergency stop and switchlock models. Illuminated and rotary switches install and remove easily from front of panel—simply snap-in to mount, no tools required. Emergency stop and switchlock models use threaded mounting ring. SPST N.O. momentary switch function with snap-acting contacts, meet IP65 degree of protection. Fits standard 0.638" (16,2) mounting hole dia. Bezel colour: black. Terminations accept 4 contact plug-in socket, with crimp-on cable. Rating: 100mA at 42 VAC or DC. Electrical Life: 1,000,000 operations minimum for illuminated; 50,000 for switchlocks, 500,000 for all others. Operating temperature: -25°C to +55°C. Lamp: T1 incandescent. Housing: Polyamid. Other keycap colours, LED lamps also available. For complete assembly, order illuminated square pushbutton and lamp separately.

Cat. No.	Description	Net Price Each		
		1-499	500-2499	2500-Up
ILLUMINATED SQUARE MOMENTARY PUSHBUTTON SWITCHES				
1.15150.006/1002	Flush, colourless lens	\$27.78	\$16.46	\$15.95
1.15150.006/1306	Flush, red lens	27.78	16.46	15.95
1.15150.006/1505	Flush, green lens	27.78	16.46	15.95
1.15150.106/1002	Protruding, colourless lens	27.78	16.46	15.95
1.15150.106/1306	Protruding, red lens	27.78	16.46	15.95
1.15150.106/1505	Protruding, green lens	27.78	16.46	15.95
1.15150.206/1002	Protruding collar, colourless lens	27.78	16.46	15.95
1.15150.206/1306	Protruding collar, red lens	27.78	16.46	15.95
1.15150.206/1505	Protruding collar, green lens	27.78	16.46	15.95

MOMENTARY & MAINTAINED ROTARY SELECTOR SWITCHES				
1.15152.026/1002	colourless lens	28.50	12.40	9.93
1.15152.026/1306	red lens	28.50	12.40	9.93
1.15152.026/1505	green lens	28.50	12.40	9.93

MOMENTARY/LATCHING & MAINTAINED SELECTOR SWITCHES				
1.15153.001/0100	Momentary, 1x50°CW	28.50	12.40	9.93
1.15153.100/0100	Momentary, 1x90°CW	28.50	12.40	9.93

EMERGENCY STOP PUSHBUTTONS				
1.15154.006/0301	Push off-Pull on, red button	37.26	20.46	19.83

MAINTAINED KEYLOCK SWITCHES				
1.15156.001/0000	Keypull Pos. 0	90.53	47.17	37.73
1.15156.011/0000	Keypull Pos. 0 + 1	90.53	47.17	37.73

ACCESSORIES				
5.00645.036	PCB socket	6.84	5.48	5.32
5.92025.368	Multiple contact socket	3.49	2.44	2.36
5.37700.124	Flat cable, 4 wire 1m length	3.59	2.56	2.48
5.58002.019	Fixing spanner for threaded ring	2.28	1.67	1.62
5.05800.042	Lens disassembly tool	8.49	6.80	6.59

T1 LAMPS				
1.90142.001	6V/0.07W	7.57	4.79	4.64
1.90180.474	12V/0.72W	7.21	4.53	4.39
1.90180.475	28V/0.84W	7.79	5.36	5.36

Cannon Key Switches



K6 AND K12 SERIES MINIATURE ILLUMINATED TACTILE SWITCHES

100mA at 30VDC max. SPST, normally open, momentary function switch with distinctive tactile feel and long travel (1.5mm). Central-mounted LED allows leg-end backlighting or switch status indication. Compact size is approx. 7.5 x 11 x 8.4mm high. Operating life rating of 200,000 actuations. Compatible with wave soldering process. Contacts are gold over nickel. **OPERATING TEMPERATURES:** are -40°C to +85°C. **APPLICATIONS:** Automotive interiors, Off-road vehicles, Industrial controls, Professional audio equipment, mainframe computers and Network servers.

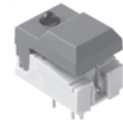
Cat. No.	Switch Style	LED Colour	Height above PC (mm)	Force (N)	Net Price	
					1-499	500-Up
MOUNTING STYLE: PC						
K6B1.53N	7.5 x 11	none	8.4	3.0	\$2.11	
K6B1.55N	7.5 x 11	none	8.4	5.0	2.11	
K6BLGN1.53N	7.5 x 11	Green	12.3	3.0	2.11	
K6BLGN1.55N	7.5 x 11	Green	12.3	5.0	2.11	
K6BLOG1.53N	7.5 x 11	Orange	12.3	3.0	2.11	
K6BLOG1.55N	7.5 x 11	Orange	12.3	5.0	2.11	
K6BLRD1.53N	7.5 x 11	Red	12.3	3.0	2.11	
K6BLRD1.55N	7.5 x 11	Red	12.3	5.0	1.79	
K6BLYE1.53N	7.5 x 11	Yellow	12.3	3.0	1.79	
K6BLYE1.55N	7.5 x 11	Yellow	12.3	5.0	1.35	



D6 SERIES TACTILE KEY SWITCHES

6VA or 100 mA at 60V AC or DC max. SPST N.O. momentary function. Body size is 12 x 12mm with built-in button (large colour selection). Compatible with wave-soldering. Light tactile force of 1.3N. Silver-plated contacts. **OPERATING TEMPERATURE:** -20°C to +85°C. **APPLICATIONS INCLUDE:** industrial controls, instrumentation and industrial appliances and machines.

Cat. No.	Switch Style	Button Colour	Height above PC (mm)	Force (N)	Net Price Each	
					1-499	500-Up
MOUNTING STYLE: PC						
D6C00	Square	White	10.0	1.3	\$.86	\$.62
D6C40	Square	Red	10.0	1.3	.86	.62
D6C50	Square	Green	10.0	1.3	.86	.62
D6C90	Square	Black	10.0	1.3	.86	.62
D6R00	Round	White	13.0	1.3	.86	.62
D6R40	Round	Red	13.0	1.3	.86	.62
D6R50	Round	Green	13.0	1.3	.86	.62
D6R90	Round	Black	13.0	1.3	.86	.62



DIGITAST SERIES KEY SWITCHES

1VA at 50V AC or DC max. SPST N.O. momentary (OA) or push-push (EE) functions. Body size: 12mm x 17mm. PC mounting. Large selection of cap types and colours available. Zero, one or two LED options (green, red, or yellow). Compatible with wave soldering process. Gold plated contacts. **OPERATING TEMPERATURE:** -25°C to +85°C. Trya packaging. **APPLICATIONS INCLUDE:** professional audio consoles, medical instrumentation, calling centres, plant automation panels. **NOTE:** if you cannot find your combination below, please contact your Electro Sonic sales representative.

Cat. No.	Button Style	Button Colour	LED	Height above PC (mm)	Net Price Each	
					1-499	500-Up
SWITCH STYLE: PUSH-PUSH						
SERBKAUEE	R	Black	none	14.3	\$6.90	\$5.61
SETBKAUEE	T	Black	none	14.3	6.96	5.66
SETLBKRDAUEE	T	Black	1 red	14.3	8.34	6.78
SERRDAUEE	R	Red	none	14.3	9.64	7.83
SET2LRDRDGNAAUEE	T	Red	1 red, 1 green	14.3	9.64	7.83
SER2LRDRDRDAUEE	R	Red	2 red	14.3	9.64	7.83
SWITCH STYLE: MOMENTARY						
SERBKAUOA	R	Black	none	14.3	9.64	7.83
SERLBKRDAUOA	R	Black	1 red	14.3	3.69	3.69
SETLBKRDAUOA	T	Black	1 red	14.3	5.25	4.27
SERRDAUOA	R	Red	none	14.3	3.81	3.10
SER2LRDRDRDAUOA	R	Red	2 red	14.3	5.25	4.27

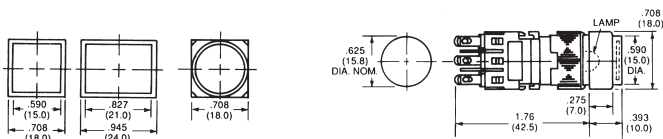
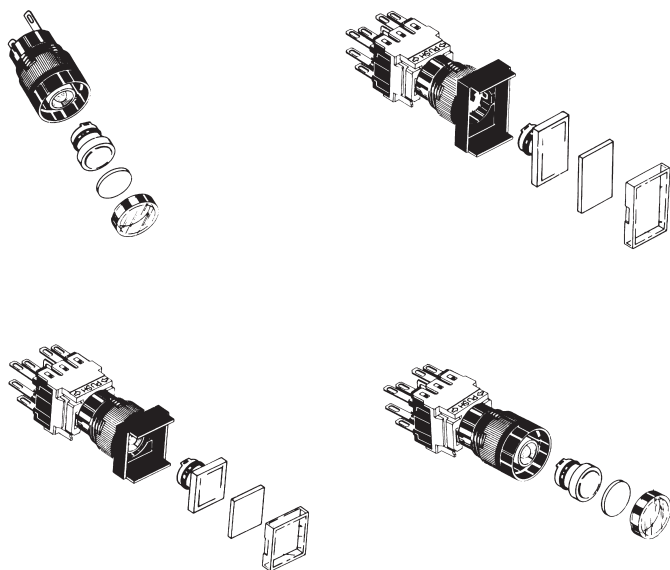


PVA SERIES LONG TRAVEL KEY SWITCHES

3VA or 100ma at 30V AC or DC max. DPST or DPDT with momentary or pushbutton functions. Body size: 9 x 10mm. Compatible with wave soldering process. Light force (1.5 N) with extended travel (2.4mm). Large selection of standard add-on caps. Silver plated contacts. Multiswitch chassis on request. **OPERATING TEMPERATURE:** -40°C to +85°C. **APPLICATIONS INCLUDE:** automotive interiors, professional audio and consumer appliances.

Cat. No.	Mechanical Function	Electrical Function	Height above PC w/o add-on cap (mm)	Net Price Each	
				1-499	500-Up
PVA1OAH1	Momentary	DPST	17.5	\$1.01	\$.79
PVA1EEH1	Push-push	DPST	17.5	1.19	.93
PVA1OAH2	Momentary	DPST	23.0	1.11	.87
PVA1EEH2	Push-push	DPST	23.0	1.29	1.01
PVA2OAH1	Momentary	DPST	17.5	1.21	.95
PVA2EEH1	Push-push	DPDT	17.5	1.39	1.09
PVA2OAH2	Momentary	DPDT	23.0	1.31	1.03
PVA2EEH2	Push-push	DPDT	23.0	1.49	1.17
PVA2OAH5	Momentary	DPDT	13.0	1.21	.95

Augat Alcoswitch Switches

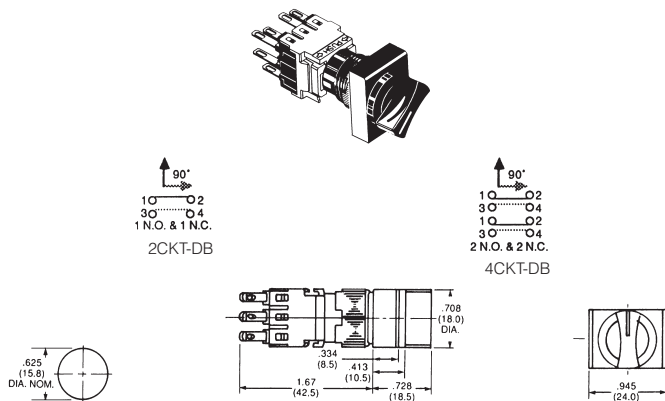


ALCO COMMAND SERIES ILLUMINATED PUSHBUTTON SERIES

Command Series Illuminated Pushbuttons are instrument-grade switches having snap-action double-break contacts, silver clad and gold plated to satisfy the requirements of logic level and power switching. Contacts are isolated from the lamp circuit. Tactile feel is excellent and maintained models have latching feature for visible indication of status. Contact rating: 0.4VA at 20VDC or peak AC; 5A at 250VAC or 24VDC resistive. Dielectric strength: 1500VRMS. Life expectancy: 100,000 operations. Fits 5/8" diameter panel hole. Uses T-1 1/4 midget flanged base lamp, relampable from front of panel.

BUTTONS AND LAMPS NOT SUPPLIED, ORDER SEPARATELY

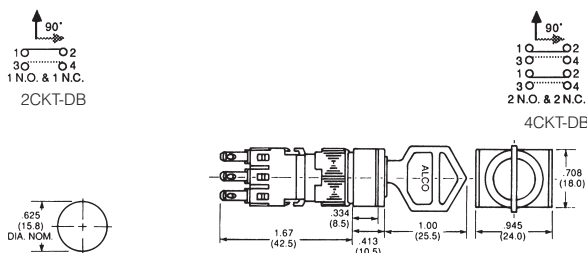
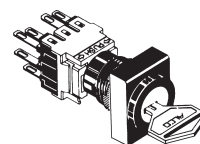
Cat. No.	Contacts	Action	Net Price
ROUND			
164EL-1104	2CKT-DB	Momentary	\$32.87
164EL-2204	4CKT-DB	Momentary	41.95
164EL5-1104	2CKT-DB	Push-On/Push-Off	38.51
164EL5-2204	4CKT-DB	Push-On/Push-Off	46.07
164-EZ04	Matching Indicator Light		18.18
64E-0	Round Lens Button Set, Black		1.46
64E-2	Red		1.46
64E-3	Orange		1.46
64E-4	Yellow		1.46
64E-5	Green		1.46
64E-9	Clear (White)		1.46
SQUARE			
164SL-1104	2CKT-DB	Momentary	32.87
164SL-2204	4CKT-DB	Momentary	41.95
164SL5-1104	2CKT-DB	Push-On/Push-Off	37.37
164SL5-2204	4CKT-DB	Push-On/Push-Off	46.07
164SZ	Pilot Light Indicator		12.98
64S-0	Square Lens Button Set, Black		2.16
64S-2	Red		2.16
64S-3	Orange		2.16
64S-5	Green		2.30
64S-9	Clear (White)		2.16
RECTANGULAR			
164TL-1104	2CKT-DB	Momentary	32.87
164TL-2204	4CKT-DB	Momentary	41.95
164TL5-1104	2CKT-DB	Push-On/Push-Off	38.51
164TL5-2204	4CKT-DB	Push-On/Push-Off	46.07
64T-2	Red		2.16
64T-3	Orange		2.16
64T-4	Yellow		2.16
64T-5	Green		2.30
64T-9	Clear (White)		2.16



ALCO COMMAND SERIES SELECTOR SWITCHES

Command Series Selector Switches are 2 & 3-position rotary types with snap-acting double-break contacts. All models have 90° throw. Contacts are silver clad and gold plated to provide reliable operation at logic levels as well as for power or 24VDC resistive. Dielectric strength: 1500VRMS. Life expectancy: 100,000 operations. Fits 5/8" diameter panel hole.

Cat. No.	Contacts	Action	Net Price Each	
			1-499	500-Up
2 POSITION				
164P2B-1104	2CKT-DB	Maintained	\$61.52	\$34.35
164P2B-2204	4CKT-DB	Maintained	68.54	38.29
3 POSITION				
164P3B-2204	4CKT-DB	Centre Off	70.60	38.29



ALCO COMMAND SERIES KEYLOCK SWITCHES

Command Series Keylock Switches are 2 & 3-position rotary types with snap-acting double-break contacts. All models have 90° throw. Contacts are silver clad and gold plated to provide reliable operation at logic levels as well as for power switching applications. Contact rating: 0.4VA at 20VDC or peak AC; 5A at 250VAC or 24VDC resistive. Dielectric strength: 1500VRMS. Life expectancy: 100,000 operations. Fits 5/8" diameter panel hole. Supplied with two keys.

Cat. No.	Contacts	Action	Net Price Each	
			1-99	100-Up
2 POSITION				
164J2A-1104	2CKT-DB	Maintained, Key Pull Left	\$38.51	\$20.88
164J2A-2204	4CKT-DB	Maintained, Key Pull Left	46.07	25.74
164J2B-1104	2CKT-DB	Maintained, Key Pull Both	94.45	51.21
164J2B-2204	4CKT-DB	Maintained, Key Pull Both	61.52	34.35
164J0A-1104	2CKT-DB	Momentary Right, Key Pull Left	41.95	23.43
3 POSITION				
164J3C-2204	4CKT-DB	Maintained, Key Pull All	70.60	38.29