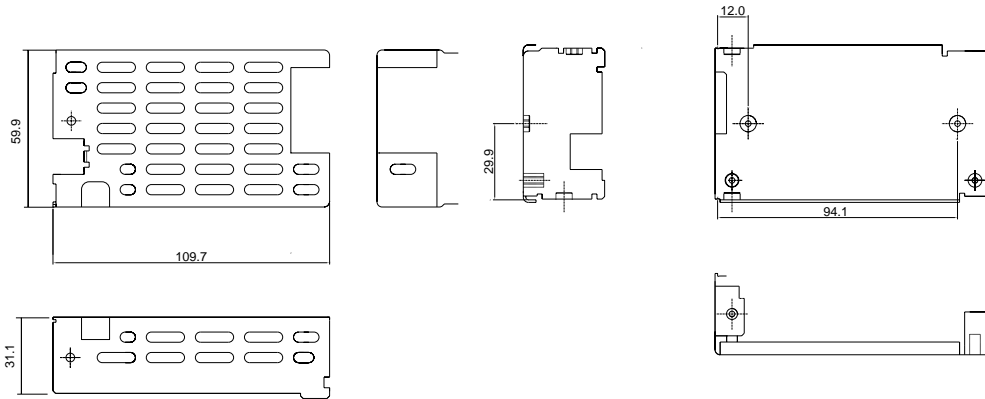


COVER KIT ACCESSORY VLT25, VLT40, VLT60, MVL25, MVL40 and MVL60 SERIES

Model Number: VLT60CK

Contents
Mounting base
Cover
Insulator
Fixing screws

Cover and Base Material
Zintec 1.0mm

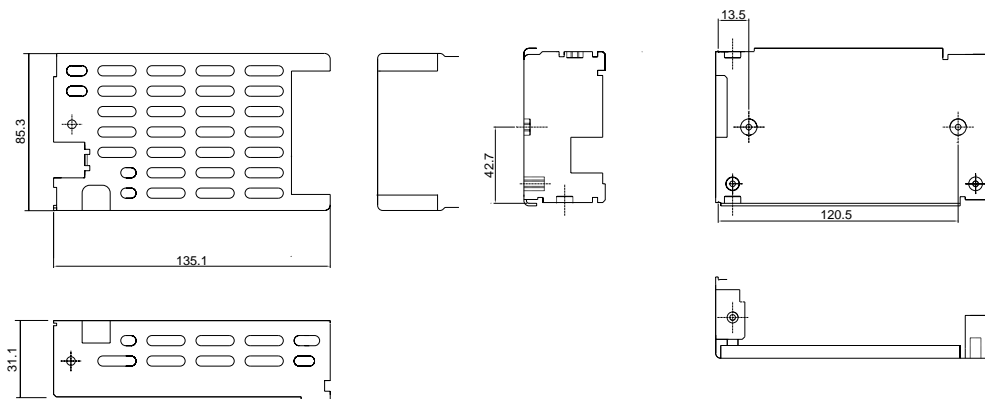


COVER KIT ACCESSORY VLT80, VLT100, VLT130 and MVL80 SERIES

Model Number: VLT80CK

Contents
Mounting bracket
Cover
Insulator
Fixing screws

Cover and Base Material
Zintec 1.0mm



VLT60CK Derating Guidelines

VLT25: Ambient >40°C, derate by 1.3W/°C to 50°C. 5CFM recommended to circulate air.

VLT40: Ambient >40°C, derate by 1.3W/°C to 50°C. 5CFM recommended to circulate air.

VLT60: Ambient >40°C, derate by 1.3W/°C to 50°C. 5CFM recommended to circulate air.

VLT80CK Derating Guidelines

VLT80: Ambient >40°C, derate by 1.3W/°C to 50°C. 5CFM recommended to circulate air.

VLT100: It is not recommended to operate with ambient >40°C.

VLT130: Ambient >30°C, derate by 1.3W/°C to 40°C.

For 130W output, 25CFM should be directed into the unit through the output connector opening of the cover kit.

