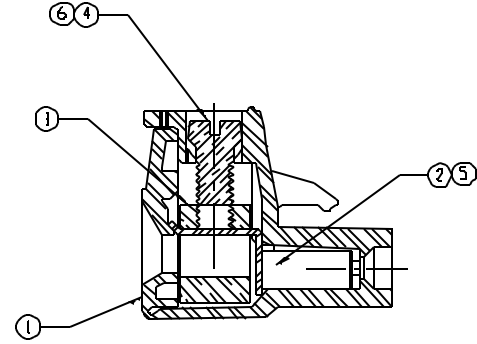
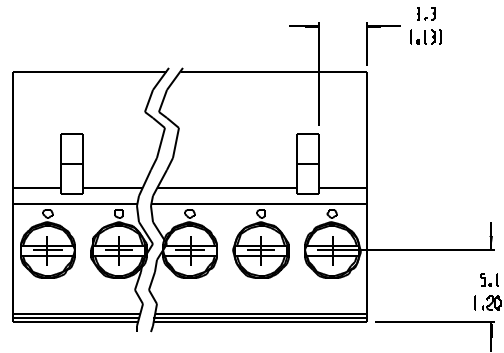
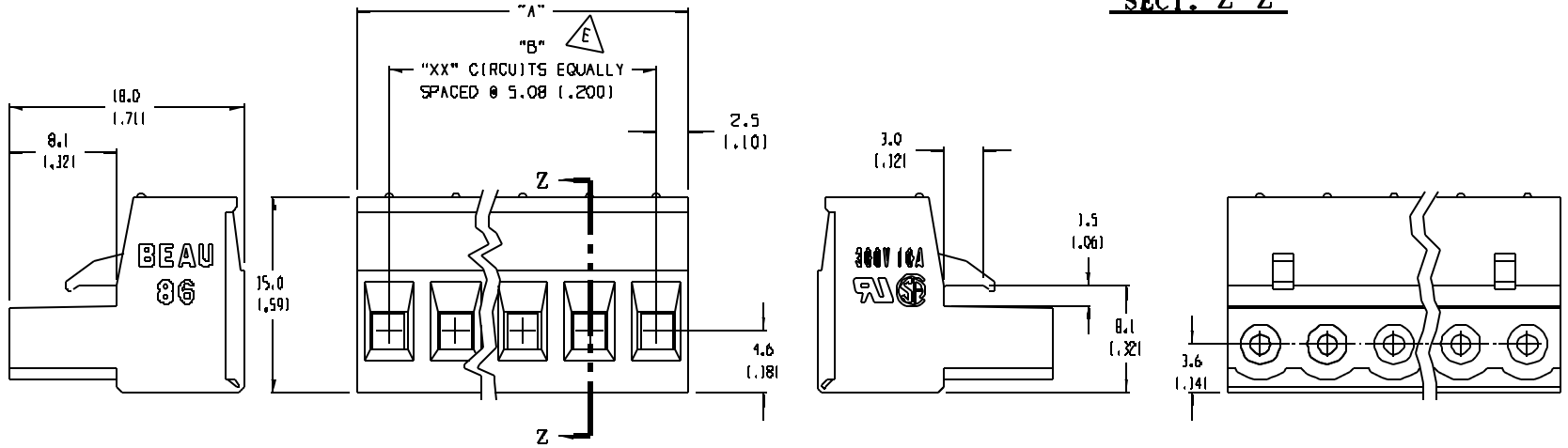


NOTES:

1. MATERIAL: SEE TABLE
2. FINISHES: SEE TABLE
3. PRODUCT SPECIFICATION: NOT REQUIRED
4. PACKAGING: NOT REQUIRED
5. MATES WITH: 5.08mm (.200in) BEAU EUROSTYLE HEADERS (39860 SERIES OR BEAU SERIES 86 HEADERS)
6. "XX" REFERS TO THE QUANTITY OF CIRCUITS.
7. SEE SHEET 2 FOR LENGTH TABLE AND CIRCUIT IMPRINTING OPTIONS.



SECT. Z-Z



ITEM	QTY.	DESCRIPTION	MATERIAL	FINISH
6	"XX"	SCREW, M3 X 0.5 1-630 OPT, 1	PHOSPHOR BRONZE	TIN PLATE
5	"XX"	TERMINAL 1-630 OPT(ON)	PHOSPHOR BRONZE	GOLD PLATE
4	"XX"	SCREW, M3 X 0.5	STEEL	ZN, CLEAR CHROMATE
3	"XX"	CAGE CLAMP	BRASS	NICKEL
2	"XX"	TERMINAL	PHOSPHOR BRONZE	HOT TIN DIP
1	1	INSULATOR	POLYAMIDE	BLACK

EC NO. ECN 3645	DRWN: CY 04-12-04
CHK:	APPR:
REV	DESCRIPTION
MAJOR	QUALITY SYMBOLS
CRITICAL	
SPC	

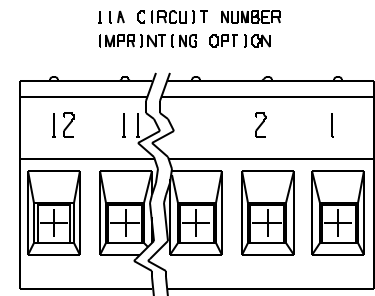
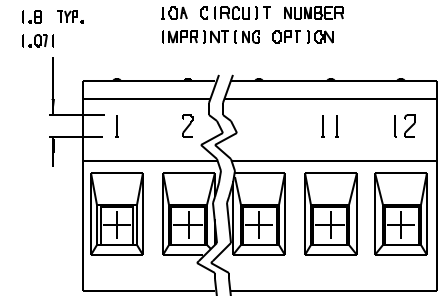
GENERAL TOLERANCES UNLESS SPECIFIED	
MM	INCH
1 PLACES	±.0015
3 PLACES	±.005
2 PLACES	±.01
1 PLACE	±.03
ANGULAR: ±2°	
DRAFT WHERE APPLICABLE MUST REMAIN WITHIN DIMENSIONS	

SCALE: 3:1	DESIGN UNITS: <input type="checkbox"/> MM <input checked="" type="checkbox"/> INCH
DRAWN BY & DATE: R. KEMP 12-6-01	THIRD ANGLE PROJECTION
CHECKED BY & DATE: P. WALTZ 12-6-01	
APPROVED BY & DATE: L. ROTHAUSS 12-6-01	
CAD FILENAME: B605XX	

PROJECT NO. N/A	SHT	REV
DIMENSIONS: <input checked="" type="checkbox"/> MM <input type="checkbox"/> INCH		REVISE ON CAD ONLY
TITLE: PLUGGABLE SR BITS ASSY, 1.200 CENTERS		
MOLEX INCORPORATED		
MATERIAL NO. SEE SHT. 2	DRAWING NO. 50-39860-002	SHEET NO. 1 OF 2
THIS DRAWING CONTAINS INFORMATION THAT IS PROPRIETARY TO MOLEX INCORPORATED AND SHOULD NOT BE USED WITHOUT WRITTEN PERMISSION.		SIZE B

MATERIAL NO. (STD.)	MATERIAL NO. (-Q30 OPTION)	MATERIAL NO. (-10A OPTION)	NUMBER OF CIRCUITS "XX"	DIM "A"	DIM "B"
39860-0117	39861-0117		17	86.36 13.4001	81.28 13.2001
39860-0118	39861-0118	39862-0118	18	91.44 13.6001	86.36 13.4001
39860-0119	39861-0119		19	96.52 13.8001	91.44 13.6001
39860-0120	39861-0120	39862-0120	20	101.60 14.0001	96.52 13.8001
39860-0121	39861-0121		21	106.68 14.2001	101.60 14.0001
39860-0122	39861-0122		22	111.76 14.4001	106.68 14.2001
39860-0123	39861-0123		23	116.84 14.6001	111.76 14.4001
39860-0124	39861-0124	39862-0124	24	121.92 14.8001	116.84 14.6001

NOTE: SEE DWG. SD-39860-001 FOR CIRCUIT NUMBERS 02 - 16



EC NO. SEE SHEET 1 DRWN: CH'K: APPR:	DESCRIPTION MAJOR CRITICAL SPC S	QUALITY SYMBOLS		GENERAL TOLERANCES (UNLESS SPECIFIED)		SCALE 3:1	DESIGN UNITS <input type="checkbox"/> mm <input checked="" type="checkbox"/> INCH	THIRD ANGLE PROJECTION	DIMENSIONS: <input checked="" type="checkbox"/> DIM INCH <input type="checkbox"/> DIM MM <input type="checkbox"/> DIM ONLY	SHIT REV			
		4 PLACES ±.0015	3 PLACES ±.008 ±.005	2 PLACES ±.13 ±.01	1 PLACE ±.3	ANGLULAR: ±2°	DRAWN BY & DATE R. KEMP 12-6-01	CHECKED BY & DATE P. WALTZ 12-6-01	APPROVED BY & DATE L. ROTHBAUS 12-6-01	TITLE: PLUGGABLE SR BITS ASSY, 1.200 CENTERS			
		DRAFT WHERE APPLICABLE MUST REMAIN WITHIN DIMENSIONS						CAD FILENAME 8605XX	MATERIAL NO. SEE CHART			DRAWING NO. SD-39860-002	SHEET NO. 2 OF 2
		THIS DRAWING CONTAINS INFORMATION THAT IS PROPRIETARY TO MOLEX INCORPORATED AND SHOULD NOT BE USED WITHOUT WRITTEN PERMISSION.											