

1SNK900402R0000 ✓ ACTIVE

ENTRELEC | ENTRELEC SNK

TE Internal #: 1SNK900402R0000

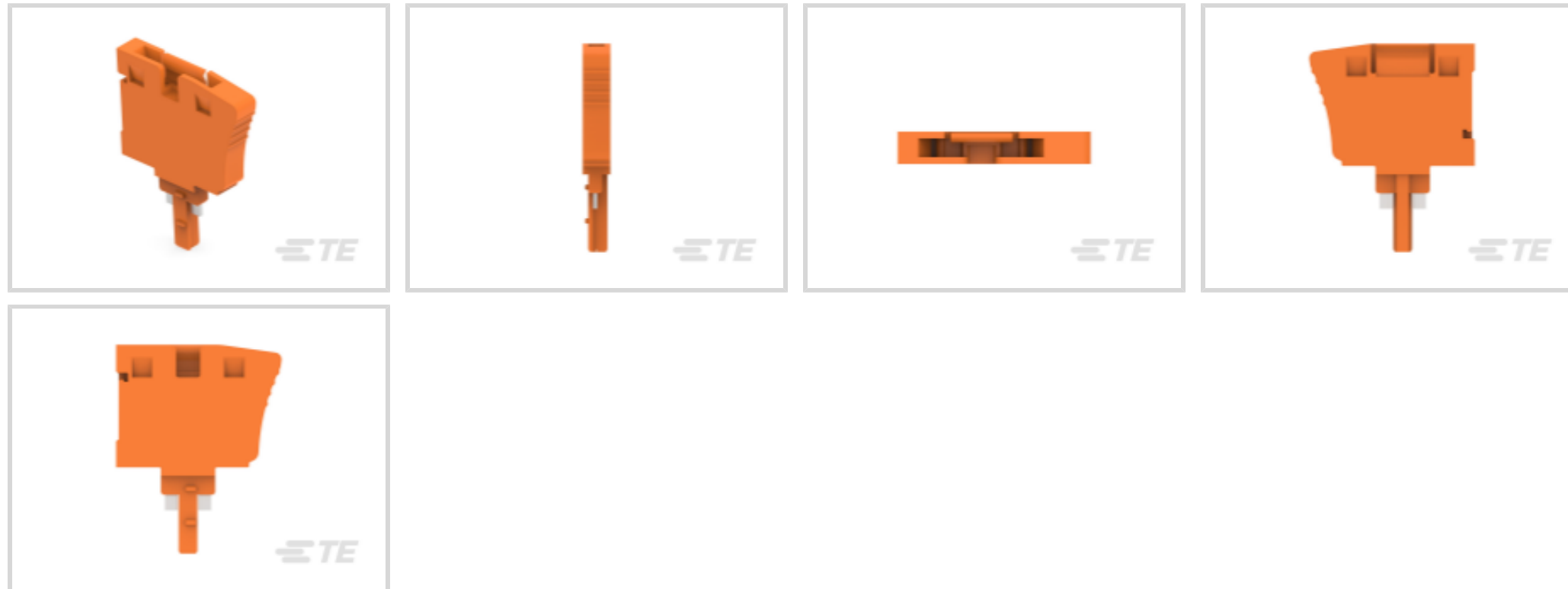
Disconnect Plug, Orange, Product Spacing 5.2 mm [.205 in], -55 – 110 °C [-67 – 230 °F], ENTRELEC SNK, Terminal Block & Strip

Conducting Accessories

[View on TE.com >](#)



Connectors > Terminal Blocks & Strips > Terminal Block & Strip Accessories > Terminal Block & Strip Conducting Accessories



Conducting Accessory Type: **Disconnect Plug**

PCB Mount Retention Type: **Plug-In**

Primary Product Color: **Orange**

Product Spacing: **5.2 mm [.205 in]**

Contact Current Rating (Max): **18 A**

Features

Product Type Features

Conducting Accessory Type	Disconnect Plug
---------------------------	-----------------

Electrical Characteristics

Operating Voltage Rating (UL & CSA) (Max) - Main Circuit	150 V
Impulse Withstanding Voltage Rating (IEC)	6000 V
Voltage Rating (CSA)	150 V
Current Rating (CSA)	20 A
Short-Time Withstanding Current Rating @ 1s	480 A
Dielectric Withstanding Voltage (Max)	1890 V
Voltage Rating (IEC)	400 V
Current Rating (UL)	20 A
Current Rating (IEC)	18 A

Body Features

Plastic & Resin Material Type	Polyamide
Product Weight	3.5 g[.124 oz]



Primary Product Color	Orange
-----------------------	--------

Contact Features

Contact Current Rating (Max)	18 A
------------------------------	------

Mechanical Attachment

PCB Mount Retention Type	Plug-In
--------------------------	---------

Dimensions

Product Depth	39 mm[1.535 in]
---------------	-----------------

Product Width	5.2 mm[.205 in]
---------------	-----------------

Product Height	31 mm[1.22 in]
----------------	----------------

Product Spacing	5.2 mm[.205 in]
-----------------	-----------------

Usage Conditions

Installation Temperature Range	-5 – 40 °C[23 – 104 °F]
--------------------------------	-------------------------

Operating Temperature Range	-55 – 110 °C[-67 – 230 °F]
-----------------------------	----------------------------

Industry Standards

IP Rating	IP20
-----------	------

Product Compliance

[For compliance documentation, visit the product page on TE.com>](#)

EU RoHS Directive 2011/65/EU	Compliant
------------------------------	-----------

EU ELV Directive 2000/53/EC	Compliant
-----------------------------	-----------

China RoHS 2 Directive MIIT Order No 32, 2016	No Restricted Materials Above Threshold
---	---

EU REACH Regulation (EC) No. 1907/2006	Current ECHA Candidate List: JUNE 2024 (241) Candidate List Declared Against: JUNE 2024 (241) Does not contain REACH SVHC
--	---

Halogen Content	Low Halogen - Br, Cl, F, I < 900 ppm per homogenous material. Also BFR/CFR/PVC Free
-----------------	---

Solder Process Capability	Not reviewed for solder process capability
---------------------------	--

Product Compliance Disclaimer

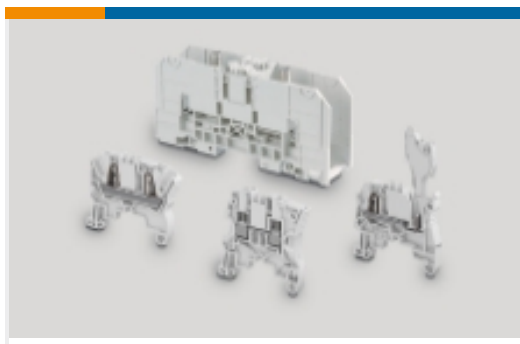
This information is provided based on reasonable inquiry of our suppliers and represents our current actual knowledge based on the information they provided. This information is subject to change. The part numbers that TE has identified as EU RoHS compliant have a maximum concentration of 0.1% by weight in homogenous materials for lead, hexavalent chromium, mercury, PBB, PBDE, DBP, BBP, DEHP, DIBP, and 0.01% for cadmium, or qualify for an exemption to these limits as defined in the Annexes of Directive 2011/65/EU (RoHS2). Finished electrical and electronic equipment products

will be CE marked as required by Directive 2011/65/EU. Components may not be CE marked. Additionally, the part numbers that TE has identified as EU ELV compliant have a maximum concentration of 0.1% by weight in homogenous materials for lead, hexavalent chromium, and mercury, and 0.01% for cadmium, or qualify for an exemption to these limits as defined in the Annexes of Directive 2000/53/EC (ELV). Regarding the REACH Regulation, the information TE provides on SVHC in articles for this part number is based on the latest European Chemicals Agency (ECHA) 'Guidance on requirements for substances in articles' posted at this URL: <https://echa.europa.eu/guidance-documents/guidance-on-reach>

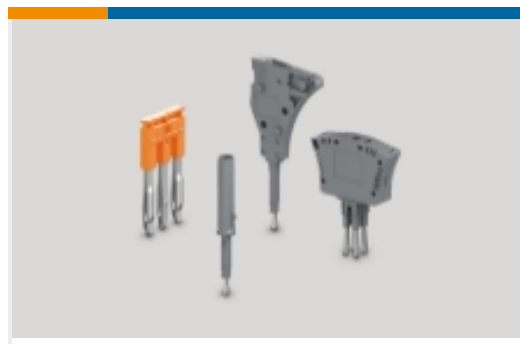
Compatible Parts



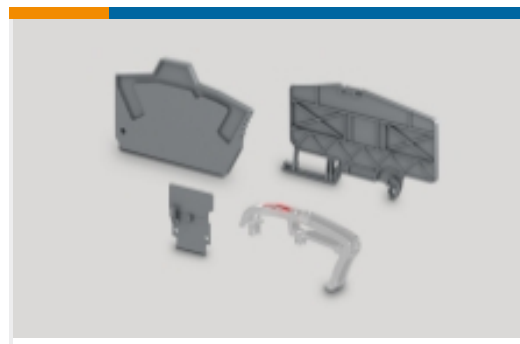
Also in the Series | **ENTRELEC SNK**



Modular Terminal Blocks(320)



Terminal Block & Strip Conducting Accessories(67)



Terminal Block & Strip Insulating Accessories(31)

Customers Also Bought



TE Part #2-1419106-5
27E893=SOCKET,KU,11,QC,POLY,NA-



TE Part #3-1393115-2
KUL-11D15D-24=KU



TE Part #1SNK505010R0000
ZS4



TE Part #1SNK505150R0000
ZS4-PE



TE Part #1SNK505313R0000
ZS4-SP



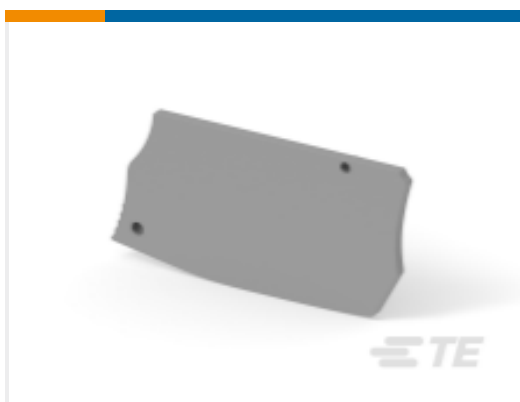
TE Part #1SNK905302R0000
JB5-2



TE Part #1SNA113544R1200
PC5-10



TE Part #1SNK149999R0000
MC512PA



TE Part #1SNK505910R0000
ES4



TE Part #4-1393159-8
20C318=SPRING,HOLD-DOWN,K10,.0

Documents

CAD Files

[3D PDF](#)

[3D](#)

Customer View Model

[ENG_CVM_CVM_1SNK900402R0000_A.2d_dxf.zip](#)

English

Customer View Model

[ENG_CVM_CVM_1SNK900402R0000_A.3d_igs.zip](#)

1SNK900402R0000

Disconnect Plug, Orange, Product Spacing 5.2 mm [.205 in], -55 – 110 °C [-67 – 230 ° F], ENTRELEC SNK, Terminal Block & Strip Conducting Accessories



English

Customer View Model

[ENG_CVM_CVM_1SNK900402R0000_A.3d_stp.zip](#)

English

By downloading the CAD file I accept and agree to the [Terms and Conditions](#) of use.

Datasheets & Catalog Pages

[ENTRELEC Terminal Block - Master Catalog](#)

[ENTRELEC Terminal Block - Master Catalog](#)

English

[PG5-R1](#)

English

[SNK SERIES TERMINAL BLOCKS](#)

English

[ENTRELEC Terminal Blocks Catalogue \(RUS\)](#)