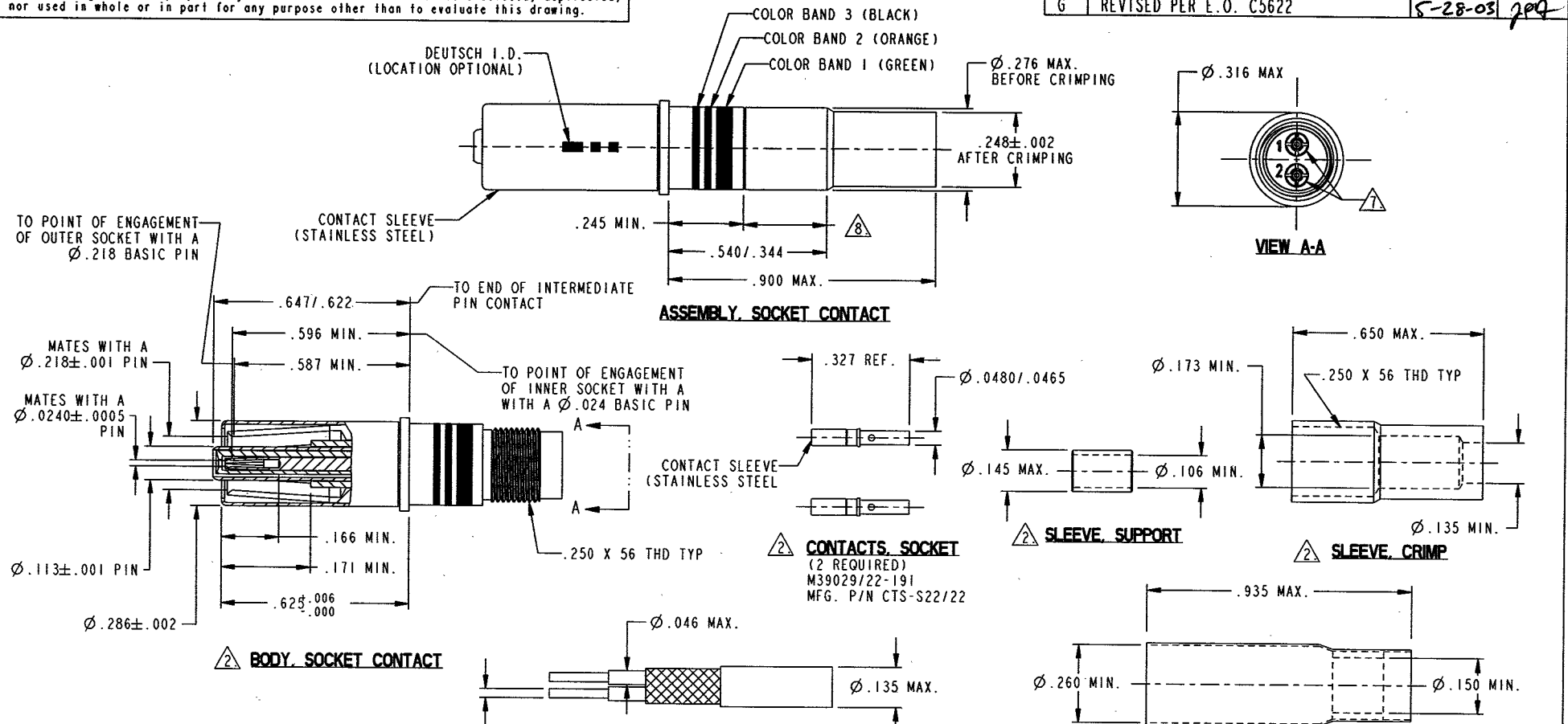


PROPERTY OF DEUTSCH E.C.D.

This drawing contains proprietary information that shall not be disclosed, duplicated, nor used in whole or in part for any purpose other than to evaluate this drawing.

G 6162-284-0877

REVISIONS			
REV	DESCRIPTION	DATE	APPROVED
G	REVISED PER E.O. C5622	5-28-03	JPP



10. CABLES ACCOMMODATED: M17/176-00002  
M27500(C,D)26SC2M23

9. FOR ASSEMBLY INSTRUCTIONS, SEE FORM 996.

8. IN AREA SHOWN, THE DIAMETER MAY GROW TO .290 MAX. AFTER CRIMPING.

7. CAVITY MARKED '1' GOES TO INNER CONTACT, CAVITY MARKED '2' GOES TO INTERMEDIATE CONTACT.

6. WIRE SEALING BOOT UTILIZED WITH THESE CONTACTS WILL SEAL ON CABLE WITH A MIN. JACKET DIA. OF .105 AND A MAX. OF .276. SMALLER DIA. CABLE MUST BE INCREASED WITH THE USE OF HEAT SHRINKABLE TUBING.

5. .030 DIA. SHOWN IS FOR STRANDED CONDUCTOR. SOLID CONDUCTOR MAY BE SLIGHTLY LARGER.

4. CONTACTS PLATED .000050 MIN. GOLD THICKNESS PER MIL-G-45204.

3. ALL COMPONENTS MADE OF HIGH GRADE COPPER ALLOY EXCEPT AS SHOWN.

2. DESIGNATES PARTS ARE SHIPPED LOOSE.

1. DIMENSIONS ARE IN INCHES. DIMENSIONS SHOWN APPLY AFTER PLATING.

NOTES:

CABLE ACCOMMODATED  
M17/176-00002

CONTACT	CABLE ACCOMMODATED	TEST CURRENT (AMPERES)	CONTACT RESISTANCE			MIN. CRIMP TENSILE STRENGTH AXIAL LOAD (POUNDS)	DIELECTRIC WITHSTANDING VOLTAGE		
			MAXIMUM VOLTAGE DROP (mV)				CONTACTS	ALTITUDE	TEST VOLTAGES A.C. RMS
			25°C +3°/-0°C	175°C +3°/-0°C	AFTER CONDITIONING				
CENTER	M17/176-00002	1.0	55	66	94	8	CENTER TO INTERMEDIATE	SEA LEVEL	1000
INTERMEDIATE	M17/176-00002	1.0	55	66	94	8	-----	-----	-----
OUTER	M17/176-00002	12.0	75	90	128	25	INTERMEDIATE TO OUTER	SEA LEVEL	500

SIGNATURE & DATE	
DR	J. FRIEDHOF 1-28-00
CHK	M.K. 1-31-00
PE	J. FRIEDHOF 1-28-00
APPD	<i>J. Friedhof</i> 06/06/09
SCALE	NONE

CONTACT, SOCKET  
ELECTRICAL CONNECTOR  
CONCENTRIC TWINAX  
SIZE 8  
FOR D38999 CONNECTOR  
PER MIL-C-39029/91-530  
ENVELOPE

CP	---	MATL CODE
<b>DEUTSCH</b> ENGINEERED CONNECTING DEVICES 5733 W. Whittier Ave. Hemet, California		
<b>A</b>	6162-284-0877	
SIZE	CODE 11139	SHEET 1 OF 1