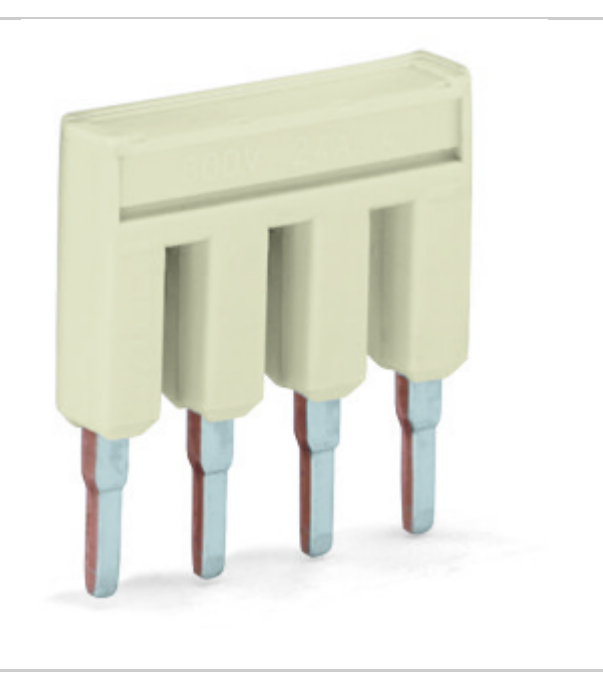




Push-in type jumper bar; insulated; 2-way; Nominal current 14 A



Item no.	2000-402	GTN / EAN	4055143692441
Content	1 piece	Order unit	piece
Order quantity	25 piece	Increase in order quantity	(25, 50, 75, 100, ...)
Customer item no.		Customs Tariff no.	85369090990
Customs duty for the country of origin	DE	Available	-
List price	On request	Net price	On request
Availability	On request		

Note: Some items may not be available from your local WAGO company. Please note that the quantities ordered in the shopping cart are rounded up to the PU (SPU).

RoHS Compliant

Article details Approvals Downloads/Certificates

Description Push-in type jumper bar; insulated; 2-way; Nominal current 14 A

Remarks

Item properties		
Miscellaneous		
Name	Value	Unit
Rated current (I _N)	12	A
Width	5.9 mm / 0.232 in	
Height	19 mm / 0.748 in	
Depth	4.1 mm / 0.161 in	
Color	light gray	
Fire load (MJ)	0.005	MJ
Weight (g)	0.51	g
(mm ³)	5.9	mm
Product Family	TPR-DBS S	
Main product function	Jumper	
Auxiliary product function	Push-in type jumper bar	
Product type	Accessories	

Upwards