

RC-06P1N120000 - Contact insert



1593072

<https://www.phoenixcontact.com/us/products/1593072>

Please be informed that the data shown in this PDF document is generated from our online catalog. Please find the complete data in the user documentation. Our general terms of use for downloads are valid.



Contact insert, M23, number of positions: 6, contact connection type: Pin, Solder cup, series: NC, RC, RM, TU, UC, Alternative product in accordance with RoHS II without Exemption 6c (Pb < 0.1 %) item no.: 1240320

Commercial data

Item number	1593072
Packing unit	10 pc
Minimum order quantity	1 pc
Sales key	AB31
Product key	ABRAFU
GTIN	4046356194082
Weight per piece (including packing)	10.07 g
Weight per piece (excluding packing)	10.07 g
Customs tariff number	85366990
Country of origin	DE

RC-06P1N120000 - Contact insert



1593072

<https://www.phoenixcontact.com/us/products/1593072>

Technical data

Product properties

Product type	Contact insert
Series	NC
	RC
	RM
	TU
	UC
Application	Signal
Number of positions	6
Connection profile	6
Coding	N
Thread type	M23

Data management status

Article revision	06
------------------	----

Electrical properties

Contact

Min. cross section	0.08 mm ²
Max. cross section	2.5 mm ²
Max. current	20 A
Nominal voltage U _N	48 V AC 74 V DC
Overvoltage category	III
Degree of pollution	3
Rated surge voltage	1.5 kV

Connection data

Connection method	Solder cup
-------------------	------------

Material specifications

Insulator material	PBT
Contact material	CuZn
Contact surface	Nickel-plated, gold coating

Connector

Direction of rotation	Standard
-----------------------	----------

Mechanical properties

Mechanical data

Insertion/withdrawal cycles	50
-----------------------------	----

RC-06P1N120000 - Contact insert



1593072

<https://www.phoenixcontact.com/us/products/1593072>

Environmental and real-life conditions

Ambient conditions

Ambient temperature (operation)

-40 °C ... 125 °C

RC-06P1N120000 - Contact insert

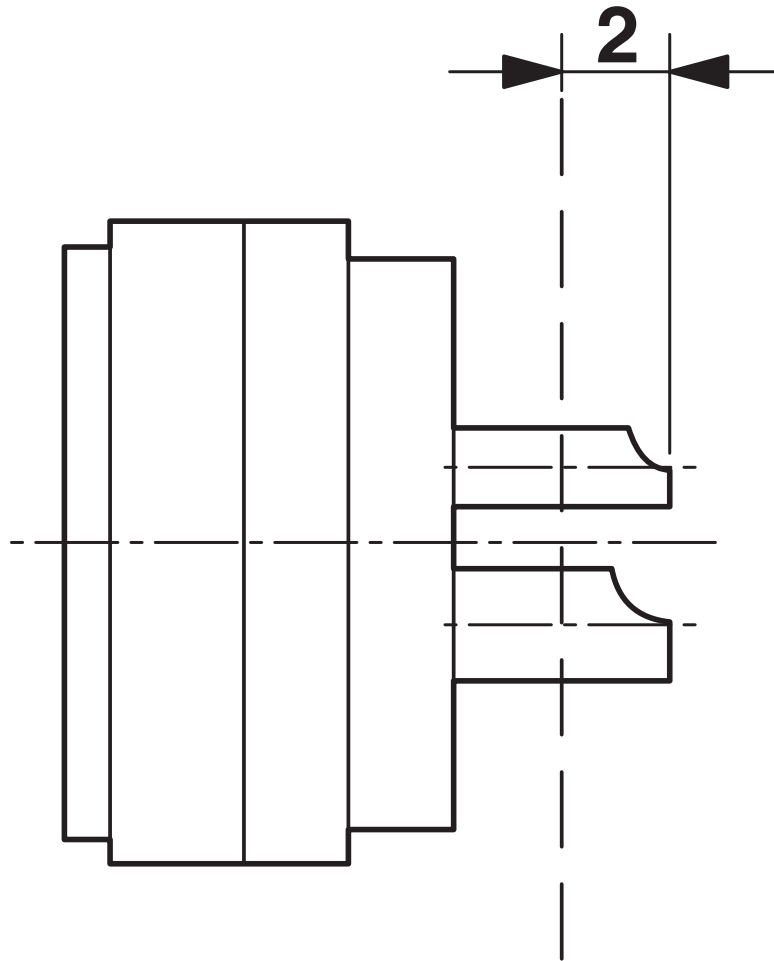


1593072

<https://www.phoenixcontact.com/us/products/1593072>

Drawings

Schematic diagram



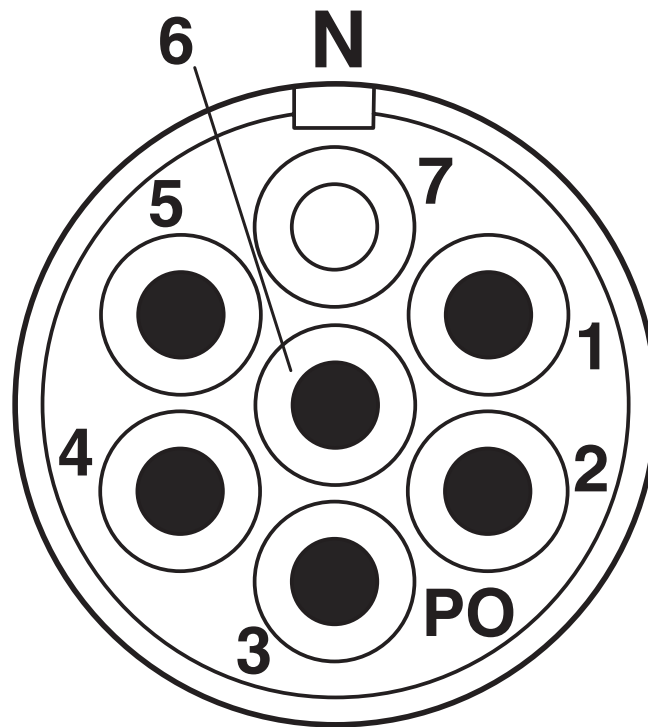
Dimensional drawing

RC-06P1N120000 - Contact insert

1593072

<https://www.phoenixcontact.com/us/products/1593072>

Schematic diagram



Connector pin assignment

RC-06P1N120000 - Contact insert



1593072

<https://www.phoenixcontact.com/us/products/1593072>

Classifications

ECLASS

ECLASS-11.0	27440223
ECLASS-12.0	27440223
ECLASS-13.0	27440223

ETIM

ETIM 9.0	EC003557
----------	----------

UNSPSC

UNSPSC 21.0	39121400
-------------	----------

RC-06P1N120000 - Contact insert



1593072

<https://www.phoenixcontact.com/us/products/1593072>

Environmental product compliance

EU RoHS

Fulfills EU RoHS substance requirements	Yes
Exemption	6(c)

China RoHS

Environment friendly use period (EFUP)	EFUP-50
	An article-related China RoHS declaration table can be found in the download area for the respective article under "Manufacturer declaration". For all articles with EFUP-E, no China RoHS declaration table issued and required.

EU REACH SVHC

REACH candidate substance (CAS No.)	Lead(CAS: 7439-92-1)
SCIP	17704355-644f-4f80-b1a9-2305de4c2541

Phoenix Contact 2024 © - all rights reserved

<https://www.phoenixcontact.com>

Phoenix Contact USA
586 Fulling Mill Road
Middletown, PA 17057, United States
(+717) 944-1300
info@phoenixcon.com