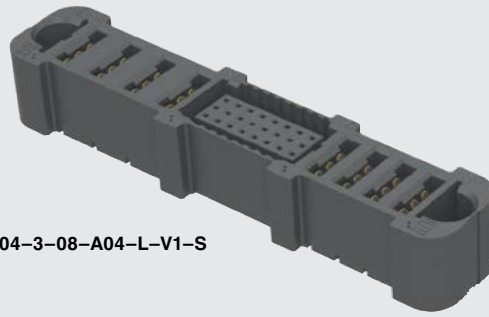




**POWER™ EXTreme**  
**STRIP Ten60**

ET60S-D04-3-08-A04-L-V1-S



# EXTreme Ten60Power™ SOCKET

Mates with:  
ET60T

## SPECIFICATIONS

For complete specifications and recommended PCB layouts see [www.samtec.com?ET60S](http://www.samtec.com?ET60S)

**Insulator Material:**

Black LCP

**Terminal Material:**

Signal: Copper Alloy  
Power: Copper Alloy

**Plating:**

Au or Sn over  
50 μm (1.27 μm) Ni

**Current Rating:**

Power: 60 A per blade  
(2 pins powered)  
Signal: 2.8 A per pin  
(6 pins powered)

**Operating Temp Range:**

-40 °C to +105 °C

**Voltage Rating:**

280 VAC

**RoHS Compliant:**

Yes

## PROCESSING

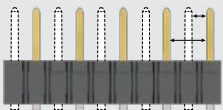
**Lead-Free Solderable:**  
Yes

## RECOGNITIONS

For complete scope of recognitions see [www.samtec.com/quality](http://www.samtec.com/quality)



## CREEPAGE AND CLEARANCE



Selectively loading contacts achieves customer specific creepage and clearance requirements. Contact [asp@samtec.com](mailto:asp@samtec.com)

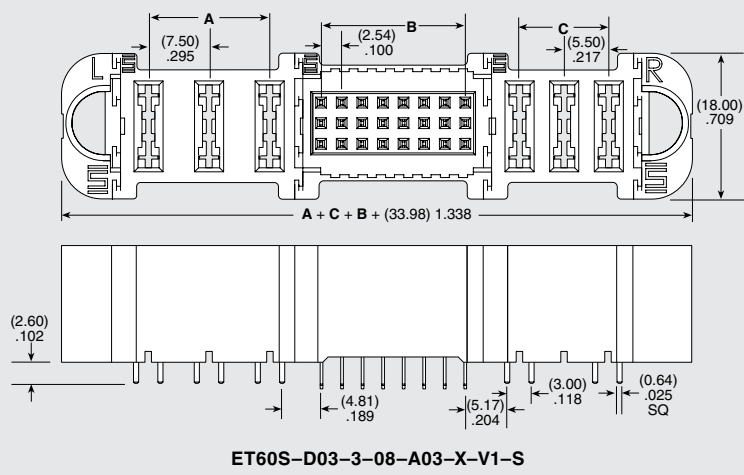
**Notes:**

Some lengths, styles and options are non-standard, non-returnable.

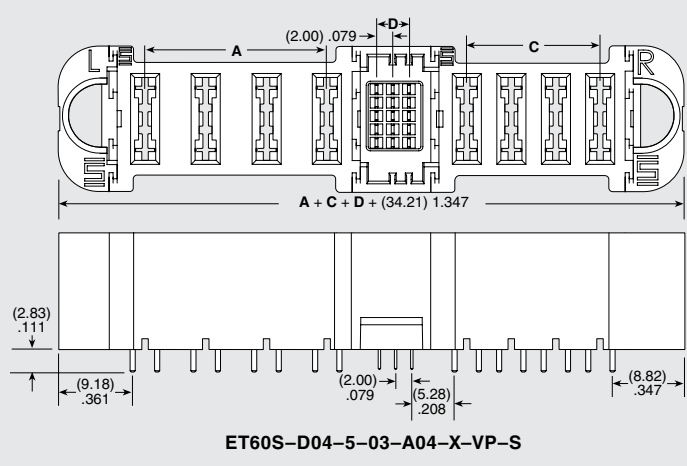
EXTreme Ten60Power™ is a trademark of Molex Incorporated and is dual sourced by Molex®

ET60S	POWER OPTION (RIGHT)	ROWS	SIGNAL POSITIONS PER ROW
	<p><b>-AXX</b> = AC Power Positions (-02, -03, -04, -05, -06 positions only)</p> <p><b>-DXX</b> = DC Power Positions (-02, -03, -04, -05, -06, -07, -08, -09, -10 positions only)</p> <p><b>-SXX*</b> = Split Power</p> <p><b>-000</b> = No Power</p>	<p><b>-0</b> = No Signal</p> <p><b>-3</b> = 3 Rows</p> <p><b>-5</b> = 5 Rows</p>	<p><b>-00</b> = No Signal</p> <p><b>-08</b> = 3 Row only</p> <p><b>-01, -02, -03, -04, -05, -06, -07, -08</b> = 5 Row only</p>

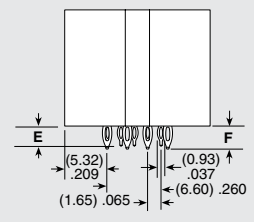
Note: -SXX\* & -T\* are Preliminary



POWER POSITIONS (LEFT)	POWER POSITIONS (RIGHT)	A AC POWER	C DC POWER
-02	-02	(7.50) .295	(5.50) .217
-03	-03	(15.00) .591	(11.00) .433
-04	-04	(22.50) .886	(16.50) .650
-05	-05	(30.00) 1.181	(22.50) .886
-06	-06	(37.50) 1.476	(27.50) 1.083
-07	-07	N/A	(33.00) 1.299
-08	-08	N/A	(38.50) 1.516
-09	-09	N/A	(44.00) 1.732
-10	-10	N/A	(49.50) 1.949



TAIL	3 ROWS		5 ROWS	
	E	F	E	F
-VP	(3.28) .129	(2.83) .111	(2.83) .111	(2.50) .098
-V1		(2.60) .102		N/A

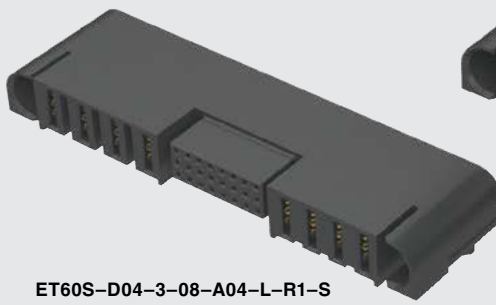
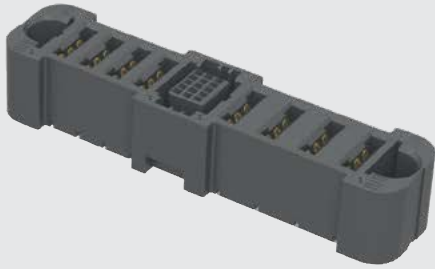


Due to technical progress, all designs, specifications and components are subject to change without notice.

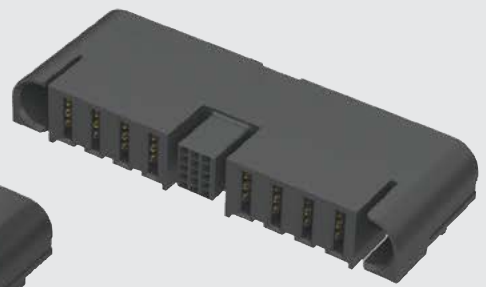
[WWW.SAMTEC.COM](http://WWW.SAMTEC.COM)

All parts within this catalog are built to Samtec's specifications. Customer specific requirements must be approved by Samtec and identified in a Samtec customer-specific drawing to apply.

ET60S-A04-5-03-D04-L-VP-S



ET60S-D04-3-08-A04-L-R1-S



ET60S-D04-5-03-A04-S-R1-S

**ET60S SERIES**

**POWER OPTION (LEFT)**

**-AXX**

= AC Power Positions  
(-02, -03, -04, -05, -06 positions only)

**-DXX**

= DC Power Positions  
(-02, -03, -04, -05, -06, -07, -08, -09, -10 positions only)

**-SXX\***

= Split Power

**-000**

= No Power

Note:  
-SXX\* & -T\* are Preliminary

**PLATING**

**-L**

= 10 μ" (0.25 μm) Gold on contact,  
Matte Tin on tail  
(Not available for 5 rows)

**-S**

= 30 μ" (0.76 μm) Gold on contact,  
Matte Tin on tail

**TAIL**

**-VP**

= Vertical Press-fit

**-V1**

= Vertical through-hole  
(Use with (1.60 mm) .062" thick card)  
(-0 and -3 Row only)

**-R1**

= Right-angle through-hole  
(Use with (1.60 mm) .062" thick card)

**GUIDE POST**

(Required callout)

**-S**

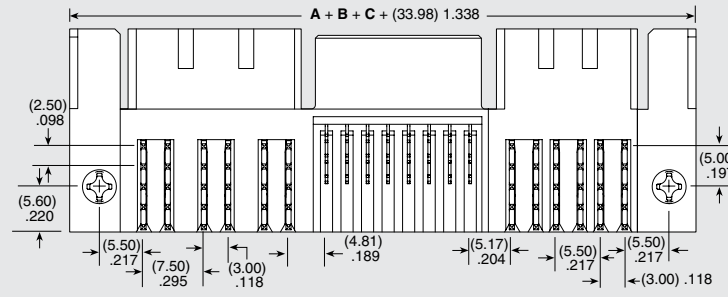
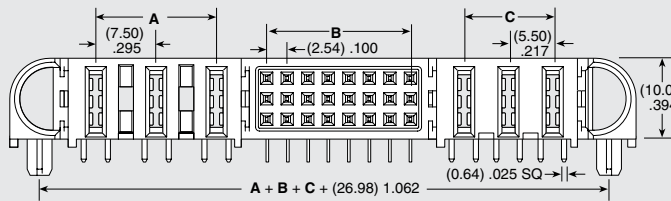
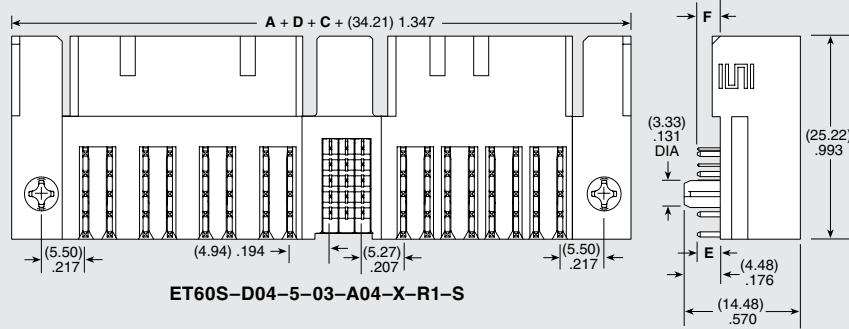
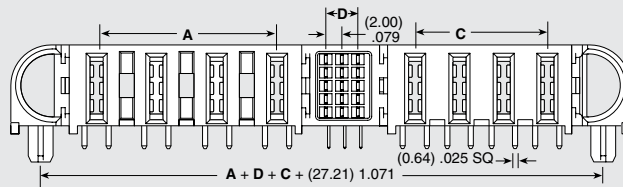
= Side Guide Post

**-T\***

= Top Guide Post

SIGNAL POSITIONS PER ROW (3 Row)	B	SIGNAL POSITIONS PER ROW (5 Row)	D
-08	(17.78) .700	-01	N/A
		-02	(2.00) .079
		-03	(4.00) .157
		-04	(6.00) .236
		-05	(8.00) .315
		-06	(10.00) .394
		-07	(12.00) .472
		-08	(14.00) .551

TAIL	E	F
-R1	(2.84) .112	



Due to technical progress, all designs, specifications and components are subject to change without notice.

[WWW.SAMTEC.COM](http://WWW.SAMTEC.COM)

All parts within this catalog are built to Samtec's specifications.  
Customer specific requirements must be approved by Samtec and identified in a Samtec customer-specific drawing to apply.