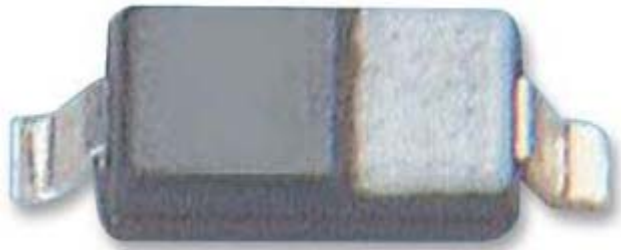


Silicon Epitaxial Switching Diode



Feature:

- Fast Switching Diode

Marking : 1N4148WS = W2 with cathode band

Absolute Maximum Ratings

Description	Symbol	Value	Unit
Continuous Reverse Voltage	V_R	75	V
Repetitive Peak Reverse Voltage	V_{RRM}	100	
Average Rectified Current Half Wave Rectification with Resistive Load $f \geq 50$ Hz	$*I_F (AV)$	150	mA
Surge Forward Current $t < 1$ s and $T_j = 25^\circ\text{C}$	I_{FSM}	350	
Power Dissipation at $T_{amb} = 25^\circ\text{C}$	$*P_{tot}$	200	mW
Junction Temperature	T_j	150	$^\circ\text{C}$
Storage Temperature Range	T_{stg}	-65 to +150	

Thermal Resistance

Junction to Ambient in Free Air	$*R_{th(j-a)}$	650	$^\circ\text{C} / \text{W}$
---------------------------------	----------------	-----	-----------------------------

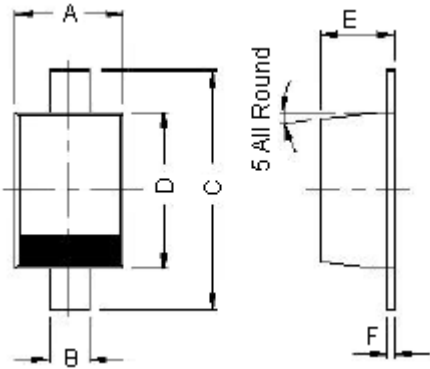
*Valid provided that electrodes are kept at ambient temperature

Electrical Characteristics ($T_{amb} = 25^\circ\text{C}$ unless specified otherwise)

Description	Symbol	Test Condition	Minimum	Maximum	Unit
Forward Voltage	V_F	$I_F = 10$ mA	-	1	V
Reverse Current	I_R	$V_R = 20$ V	-	25	nA
		$V_R = 20$ V, $T_j = 150^\circ\text{C}$		50	μA
		$V_R = 75$ V	-	5	μA

Dynamic Characteristics						
Diode Capacitance	Diode Capacitance	C_d	$V_R = 0 \text{ V}, f = 1 \text{ MHz}$	-	4	pF
Voltage Rise When Switching On (Tested with 50 ms Pulses)		V_{fr}	Tested with = 50 mA Pulses, $t_p = 0.1 \mu\text{s}$, Rise Time = <30 ns, $t_p = (5 \text{ to } 100) \text{ KHZ}$	-	2.5	ns
Reverse Recovery Time		t_{rr}	$I_F = 10 \text{ mA}$, to $I_R = 60 \text{ mA}$ $R_L = 100 \Omega$ Measured at $I_R = 1 \text{ mA}$	-	4	ns
Rectification Efficiency		η_V	$f = 100 \text{ MHz}, V_{RF} = 2 \text{ V}$	0.45	-	-

Package SOD - 323 FL



Dimensions : Millimetres

Cathode is Marked by Band

Dimension	Minimum	Maximum
A	1.15	1.35
B	0.25	0.4
C	2.3	2.8
D	1.6	1.8
E	0.8	1.1
F	0	0.15

Dimensions : Millimetres

Part Number Table

Description	Part Number
Diode, H Speed, 100 V, 0.15 A, SOD323	1N4148WS

Important Notice : This data sheet and its contents (the "Information") belong to the members of the Premier Farnell group of companies (the "Group") or are licensed to it. No licence is granted for the use of it other than for information purposes in connection with the products to which it relates. No licence of any intellectual property rights is granted. The Information is subject to change without notice and replaces all data sheets previously supplied. The Information supplied is believed to be accurate but the Group assumes no responsibility for its accuracy or completeness, any error in or omission from it or for any use made of it. Users of this data sheet should check for themselves the Information and the suitability of the products for their purpose and not make any assumptions based on information included or omitted. Liability for loss or damage resulting from any reliance on the Information or use of it (including liability resulting from negligence or where the Group was aware of the possibility of such loss or damage arising) is excluded. This will not operate to limit or restrict the Group's liability for death or personal injury resulting from its negligence. Multicomp is the registered trademark of the Group. © Premier Farnell plc 2012.