



■ Features :

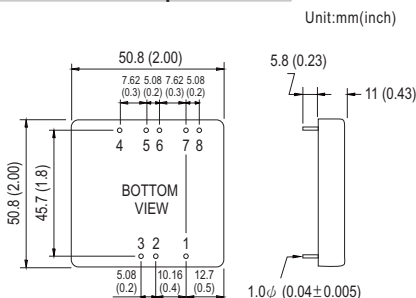
- 2:1 wide input range
- High efficiency up to 92%
- 1500VDC I/O isolation
- Built-in EMI filter
- Built-in remote ON / OFF control
- Built-in remote sense
- Trimming output  $\pm 10\%$
- Protections: Short circuit / Overload / Over voltage
- Cooling by free air convection
- Six-sided shield metal case
- 100% burn-in test
- Low cost / High reliability
- Output 3.3V/9V available
- Approvals: FCC / CE
- 2 years warranty



SPECIFICATION

| ORDER NO.                      | SKA40A-05                        | SKA40B-05  | SKA40C-05 | SKA40A-12 | SKA40B-12   | SKA40C-12 | SKA40A-15 | SKA40B-15    | SKA40C-15 |     |
|--------------------------------|----------------------------------|--|-----------|-----------|-------------|-----------|-----------|--------------|-----------|-----|
| OUTPUT                         | DC VOLTAGE                       | 5V   |           |           | 12V         |           |           | 15V          |           |     |
|                                | CURRENT RANGE                    | 0.7 ~ 7A   |           |           | 0.3 ~ 3.33A |           |           | 0.26 ~ 2.67A |           |     |
|                                | RATED POWER                      | 35W  |           |           | 40W         |           |           | 40W          |           |     |
|                                | RIPPLE & NOISE (max.) Note.2     | 60mVp-p  |           |           | 80mVp-p     |           |           | 100mVp-p     |           |     |
|                                | LINE REGULATION Note.3           | $\pm 0.5\%$  |           |           |             |           |           |              |           |     |
|                                | LOAD REGULATION Note.4           | $\pm 0.5\%$  |           |           |             |           |           |              |           |     |
|                                | VOLTAGE ACCURACY                 | $\pm 2.0\%$  |           |           |             |           |           |              |           |     |
|                                | SWITCHING FREQUENCY              | 200KHz min.  |           |           |             |           |           |              |           |     |
|                                | EXTERNAL CAPACITANCE LOAD (max.) | 1000uF   |           |           |             |           |           |              |           |     |
| EXTERNAL TRIM Adj. RANGE(Typ.) | $\pm 10\%$                       |  |           |           |             |           |           |              |           |     |
| INPUT                          | VOLTAGE RANGE                    | A: 9 ~ 18VDC B: 18 ~ 36VDC C: 36 ~ 75VDC   |           |           |             |           |           |              |           |     |
|                                | EFFICIENCY (Typ.)                | 91%  | 92%       | 91%       | 90%         | 90%       | 88.5%     | 90%          | 90.5%     | 90% |
|                                | DC CURRENT                       | Full load A: 3850mA B: 1900mA C: 1000mA<br>No load A: 150mA B: 100mA C: 65mA   |           |           |             |           |           |              |           |     |
|                                | FILTER                           | Pi network   |           |           |             |           |           |              |           |     |
|                                | REMOTE CONTROL                   | Power ON : R.C ~ -Vin > 2.5VDC or open circuit ; Power OFF : R.C ~ -Vin < 0.5VDC or short  |           |           |             |           |           |              |           |     |
| PROTECTION (Note. 5)           | OVER CURRENT                     | 110% ~ 180% rated output power<br>Protection type : Hiccup mode, recovers automatically after fault condition is removed         |           |           |             |           |           |              |           |     |
|                                | SHORT CIRCUIT                    | All output equipped with short circuit<br>Protection type : Hiccup mode, recovers automatically after fault condition is removed |           |           |             |           |           |              |           |     |
|                                | OVER VOLTAGE                     | 5Vo : 7V ~ 8.95V ; 12Vo : 15V ~ 19.2V ; 15Vo : 18V ~ 23.3V Protection type : Clamp by TVS diode                                  |           |           |             |           |           |              |           |     |
|                                | WORKING TEMP.                    | -40 ~ +80°C (Refer to "Derating Curve")  |           |           |             |           |           |              |           |     |
| ENVIRONMENT                    | WORKING HUMIDITY                 | 20% ~ 90% RH non-condensing  |           |           |             |           |           |              |           |     |
|                                | STORAGE TEMP., HUMIDITY          | -55 ~ +105°C, 10 ~ 95% RH  |           |           |             |           |           |              |           |     |
|                                | TEMP. COEFFICIENT                | $\pm 0.03\% / ^\circ\text{C}$ (0 ~ 50°C)   |           |           |             |           |           |              |           |     |
|                                | VIBRATION                        | 10 ~ 500Hz, 2G 10min./1cycle, period for 60min. each along X, Y, Z axes  |           |           |             |           |           |              |           |     |
| SAFETY & EMC                   | SAFETY STANDARDS                 | EAC TP TC 004 approved   |           |           |             |           |           |              |           |     |
|                                | WITHSTAND VOLTAGE                | I/P-O/P: 1.5KVDC   |           |           |             |           |           |              |           |     |
|                                | ISOLATION RESISTANCE             | I/P-O/P: 100M Ohms / 500VDC / 25°C / 70% RH  |           |           |             |           |           |              |           |     |
|                                | EMC EMISSION                     | Compliance to EN55032 Class A, FCC part 15 Class A, EAC TP TC 020  |           |           |             |           |           |              |           |     |
| OTHERS                         | EMC IMMUNITY                     | Compliance to EN61000-4-2,3,4,5,6,8, light industry level, criteria A, EAC TP TC 020   |           |           |             |           |           |              |           |     |
|                                | DIMENSION                        | 50.8*50.8*11.0 mm or 2**2**0.43" inch (L*W*H)  |           |           |             |           |           |              |           |     |
|                                | WEIGHT                           | 60g  |           |           |             |           |           |              |           |     |

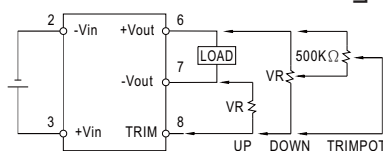
■ Mechanical Specification



■ Pin Configuration

| Pin No. | Output | Pin No. | Output |
|---------|--------|---------|--------|
| 1       | R.C    | 5       | +R.S   |
| 2       | -Vin   | 6       | +Vout  |
| 3       | +Vin   | 7       | -Vout  |
| 4       | -R.S   | 8       | TRIM   |

■ External Output Trimming



■ Derating Curve



NOTE

- 1.All parameters are specified at normal input, rated load, 25°C 70% RH ambient.
- 2.Ripple & noise are measured at 20MHz by using a 12" twisted pair terminated with a 0.1uf & 47uf capacitor.
- 3.Line regulation is measured from low line to high line at rated load.
- 4.Load regulation is measured from 10% to 100% rated load.
- 5.Please prevent the converter from operating in overload or short circuit condition for more than 30 seconds.