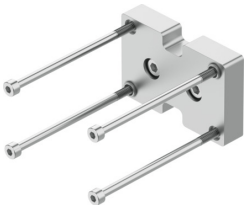


# Adapter kit DHAA-G-Q11-25-B12G-35

Part number: 2642962



 [General operating condition](#)

## Data sheet

Feature	Value
Mounting position	Any
Corrosion resistance class (CRC)	2 - Moderate corrosion stress
LABS (PWIS) conformity	VDMA24364-B1/B2-L
Type of mounting	With through-hole and screw With centering sleeve
Note on materials	RoHS-compliant
Adapter plate material	Aluminum Anodized
Material of screws	Steel Galvanized
Centering pin material	Steel