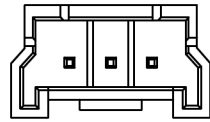
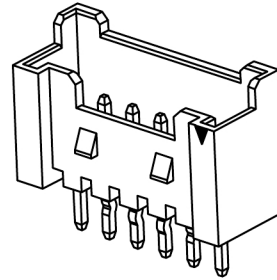


04P~20P Shap  
Scale 1:1



02P~03P Shap  
Scale 1:1



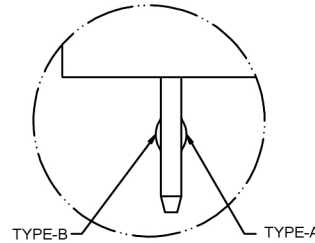
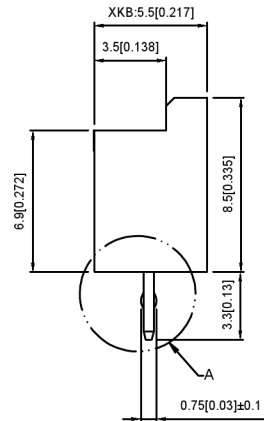
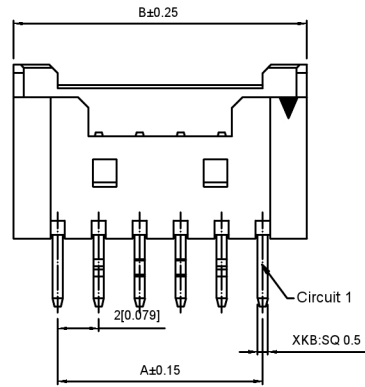
**Specifications:**

规格:  
**Voltage rating:**125V AC/DC  
**额定电压:** 125V AC/DC  
**Current rating:**2A AC/DC  
**额定电流:** 2A AC/DC  
**Withstanding voltage:**1000V AC/minute  
**耐受电压:** 1000V AC/分钟  
**Temperature range:**-40°C-+105°C  
**温度范围:** -40°C-+105°C  
**Insulation resistance:**≥1000MΩ  
**绝缘电阻:** ≥1000MΩ  
**Contact resistance:**≤20mΩ  
**接触电阻:** ≤20mΩ  
**After environmental testing:**≤30mΩ  
**环境测试后:** ≤30兆欧

X3535 W V X-XX X-N0 SN XX

① ② ③ ④ ⑤ ⑥ ⑦ ⑧ ⑨

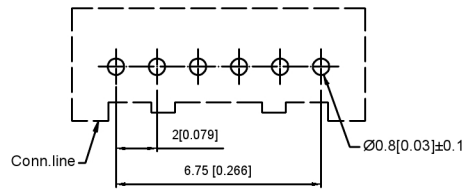
1. Series No
2. Category:W-WAFER
3. Welding Board Angle:V-Straight 180°
4. Welding Way:Blank-DIP
5. Row No-Pin No:XX-02P~20P
6. Plug the Pin&Special N0:
7. Material:N0-PA66 UL 94V-0
8. Plating Category:SN-Bright Tin Plating
9. Color:Blank-Natural Color



Detail A  
SCALE 2:1

With K to Choose the type(A Or B)

PIN NO Poles	1	2	3	4	5	6	N-2	N-1	N
6PIN Over	-	A	B	-	-	-	B	A	-
6PIN	-	A	B	B	A	-			
5PIN	A	B	-	B	A				
4PIN	A	B	B	A					
3PIN	A	B	A						
2PIN	A	B							



Recommended PCB Layout  
General Tolerance±0.05

poles	Dimensions(mm)			poles	Dimensions(mm)			Poles	Dimensions(mm)		
	A	B	C		A	B	C		A	B	C
2	2.00	7.70	5.30	10	18.00	22.30	19.30	18	34.00	38.30	37.30
3	4.00	9.70	7.30	11	20.00	24.30	21.30	19	36.00	40.30	39.30
4	6.00	10.30	9.30	12	22.00	26.30	23.30	20	38.00	42.30	41.30
5	8.00	12.30	10.70	13	24.00	28.30	25.30				
6	10.00	14.30	11.30	14	26.00	30.30	27.30				
7	12.00	16.30	13.30	15	28.00	32.30	29.30				
8	14.00	18.30	15.30	16	30.00	34.30	31.30				
9	16.00	20.30	17.30	17	32.00	36.30	33.30				

X3535WV-XX-N0SN	PA66 UL 94V-0	Brass	Tin-Plated	X3535H
PART NO	Material	Material(pin)	Finish(Pin)	Suitable XKB Housing

DSND	DATE	SCALE: N/A	MODEL TYPE: Wire to board connector
DWN	DATE	VIEW:	PART NO.: 2.00mm Crimp Style Connectors
CHKD	DATE	UNIT: mm/in	DWG NO.: X3535WV-XX-N0SN
APPD	DATE	SIZE: A4	WEIGHT SHEET REVISION 1/1 A0
KXB INDUSTRIAL PRECISION CO.,LIMITED			

广东星坤科技股份有限公司  
 文件工程章

MARK	DESCRIPTION	DATE	REVISED	APPROVED	UNSPECIFIED TOLERANCES
ΔX					units: mm
ΔX					tolerance: X.X ±0.2mm
ΔX					X.XX ±0.1mm
MARK					X.XXX ±0.05mm