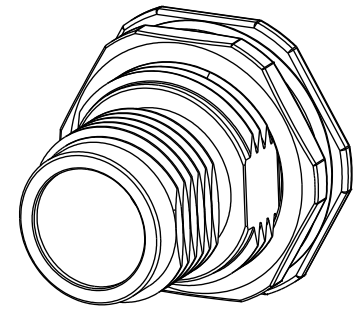
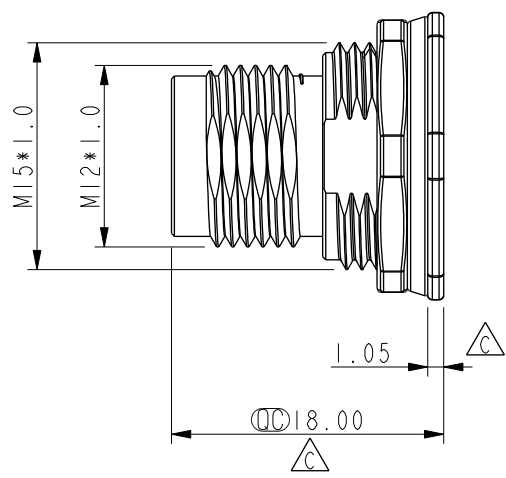
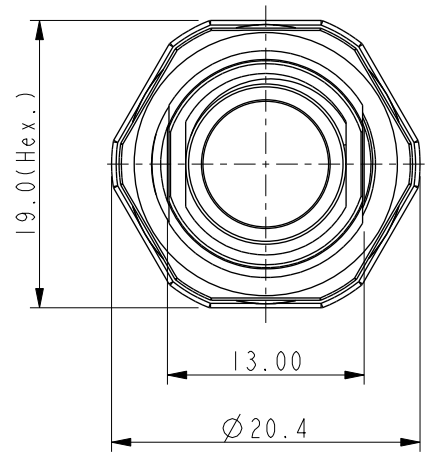
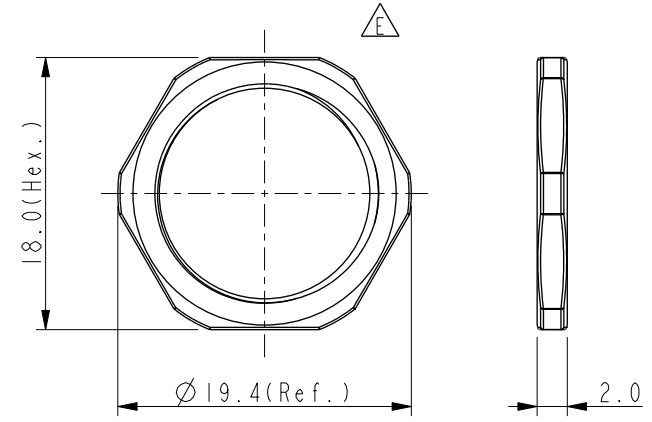
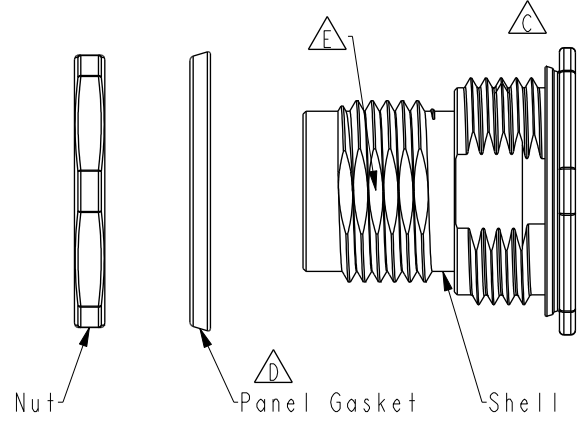
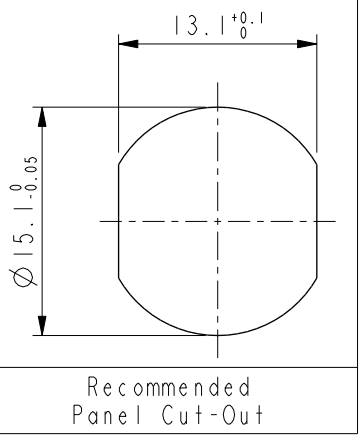


THIS DOCUMENT IS SUBJECT TO CHANGE WITHOUT NOTICE. IT IS CONFIDENTIAL AND A PROPERTY OF AMPHENOL LTW. DISCLOSURE TO THIRD PARTY HAS TO BE AUTHORIZED BY AMPHENOL LTW.

REV.	ECN NO.	DATE	SIGN	DESCRIPTION
C	C201758	2020/11/17	Allen	$\triangle C$ X4
D	C210571	2021/04/08	Allen	$\triangle D$ X2
E	C221197	2022/09/30	Allen Pan	$\triangle E$ X2



Note: $\triangle C$
 * CC Important Dimension
 * Shell: Metal.
 * Nut: Metal.
 $\triangle D$ * Panel Gasket: Rubber, Gray.
 * For Panel Thickness Max 4mm.
 * Recommended Nut Torque: 4-6kgf.cm.
 * Assemble Gasket and Nut on Connector.

UNIT: mm		
TOLERANCE		
.X	±0.25	
.XX	±0.1	
.XXX	±0.05	
ANGLES	±1°	

TITLE	MI2 SMT Male Front Fastened Hexagonal Nut Package		
SCALE	2:1	SIZE	A4
REV.	E	WC-REV.	A.3
		CC	Inspection item

Amphenol LTW
 安費諾亮泰企業股份有限公司

ITEM NO.	APPM-AAAMA012-001	DRAWN BY	Allen Pan	DATE	2020-09-08
DWG NO.	APPM-AAAMA012-001	CHECKED BY	Sam Ho	DATE	2020-09-08
CUSTOMER	ALTW	APPROVED BY	Fred Lee	DATE	2020-09-08