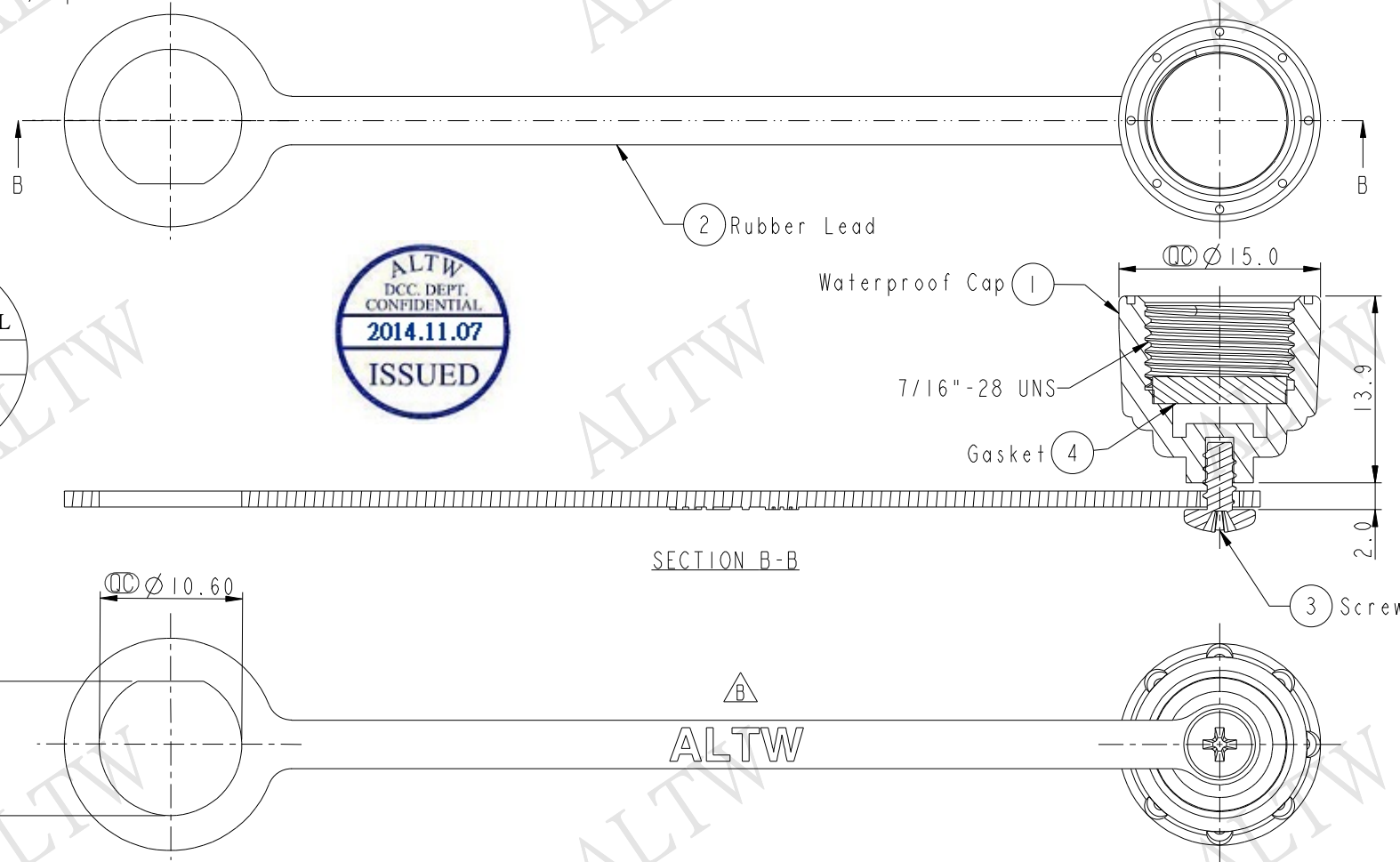


THIS DOCUMENT IS SUBJECT TO CHANGE WITHOUT NOTICE. IT IS CONFIDENTIAL AND A PROPERTY OF Amphenol LTW. DISCLOSURE TO THIRD PARTY HAS TO BE AUTHORIZED BY Amphenol LTW.

REV.	ECN NO.	DATE	SIGN	DESCRIPTION
A	Initial Release	2013/09/06	Vicky	Old Item No. CAP-WAAPMSCI
B	LEN14B0075	2014/10/23	Lu Di	Update Logo

Note:

- * CC Important Dimension To Check.
- * Waterproof Rate: IP67
- * Cap: Nylon+GF, Black
- * Rubber Lead: TPES, Black
- * Gasket: EPDM, Black
- * Screw is not allowed to tight (Chain be revolve)
不可將螺絲鎖緊, (鏈條要可旋轉)
- * Drill Hold $\varnothing 2.1\text{mm}$, Depth 3.4mm.
鑽孔 $\varnothing 2.1\text{mm}$, 深3.4mm



ALTW
CONFIDENTIAL
2014-10-23
R&D DEPT.

ALTW
DCC. DEPT.
CONFIDENTIAL
2014.11.07
ISSUED

SECTION B-B

ALTW

UNIT: mm		
TOLERANCE	.X ± 0.25	
	.XX ± 0.1	
	.XXX ± 0.05	
ANGLES	$\pm 1^\circ$	

TITLE Waterproof Cap For M Conn. A Size Screw Type			
SCALE 2:1	SIZE A4	SHEET 1 OF 1	
REV. B	WC-REV. A.1	CC : Inspection item	

Amphenol LTW
安費諾亮泰企業股份有限公司

ITEM NO. CAP-WAAMSPCI	DRAWN BY Lu Di	DATE 2014/10/23
DWG NO. CAP-WAAMSPCI	CHECKED BY Joyy	DATE 2014/10/23
CUSTOMER ALTW	APPROVED BY Jerry	DATE 2014/10/23