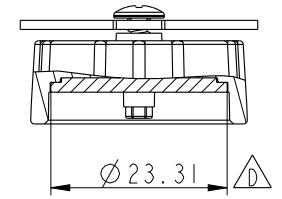
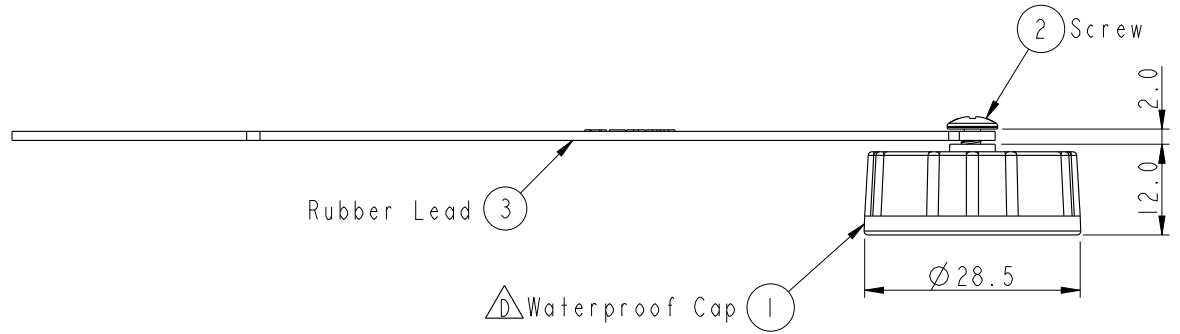
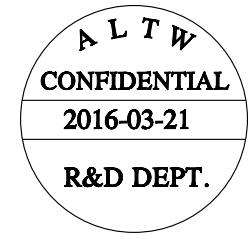
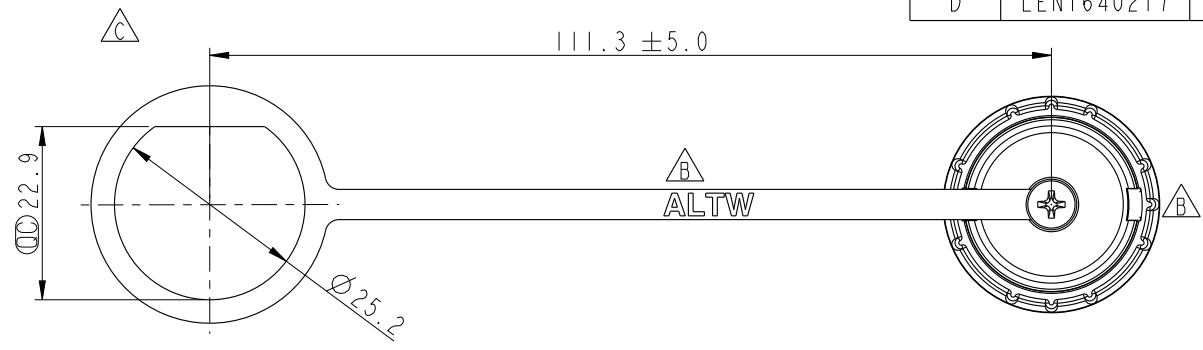


THIS DOCUMENT IS SUBJECT TO CHANGE WITHOUT NOTICE. IT IS CONFIDENTIAL AND A PROPERTY OF Amphenol LTW. DISCLOSURE TO THIRD PARTY HAS TO BE AUTHORIZED BY Amphenol LTW.

REV.	ECN NO.	DATE	SIGN	DESCRIPTION
B	LEN1490224	2014/08/26	Feng_Li	Change Logo and Lock Point
C	LE31510469	2015/01/26	Mafei	Change The Chain Material From PVC To TPES.
D	LEN1640217	2016/03/21	Joyy	Replace the gasket and Modify the cap's structure



截面 A-A



Note:
 * CC Important Dimension To Check.
 * Waterproof Rate: IP67.
 * Cap: Nylon+GF, Black, UV Resistance.
 * Gasket: Silicone, Black.
 * Rubber Lead: TPES, Black.
 * Screw is not allowed to tight (Chain be revolve)
 不可將螺絲鎖緊 (Rubber Lead要可旋轉)

UNIT: mm		
TOLERANCE		
.X	±0.25	
.XX	±0.1	
.XXX	±0.05	
ANGLES	±1°	

TITLE Waterproof Cap For Male Conn. Δ D Size Lock Type (Use in Circular)			
SCALE 1:1	SIZE A4	SHEET 1 OF 1	
REV. D	WC-REV. A.6	CC : Inspection item	

Amphenol LTW
 安費諾亮泰企業股份有限公司

ITEM NO. CAP-WADMLPC1	DRAWN BY Joyy	DATE 2016-03-21
DWG NO. CAP-WADMLPC1	CHECKED BY Lu Di	DATE 2016-03-21
CUSTOMER ALTW	APPROVED BY Jerry	DATE 2016-03-21