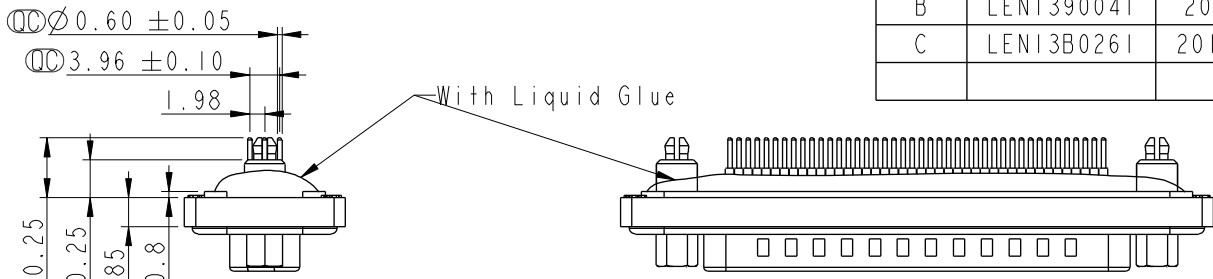
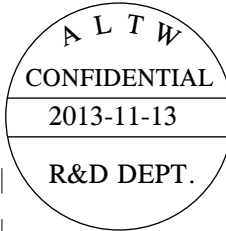
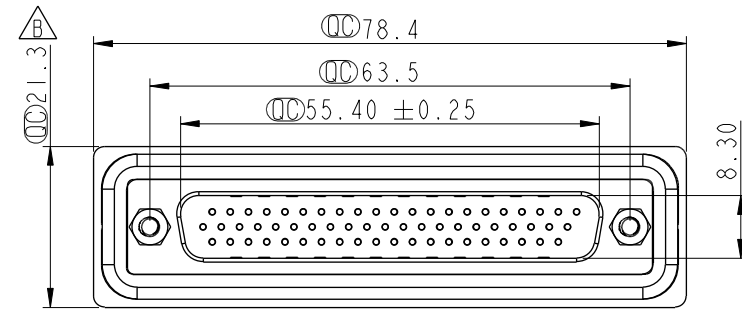
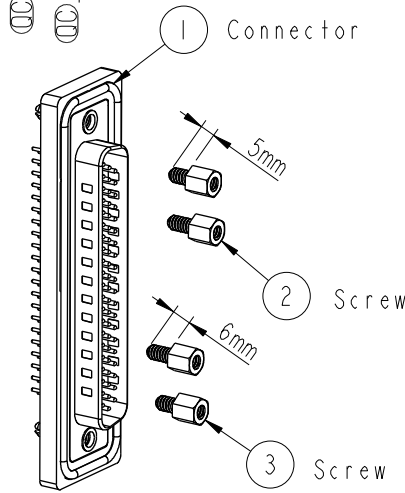


REV.	ECN NO.	DATE	SIGN	DESCRIPTION
B	LEN1390041	2007/10/03	Lu Di	Update Dimensions
C	LEN13B0261	2013/11/13	Sam	Modify Dimension

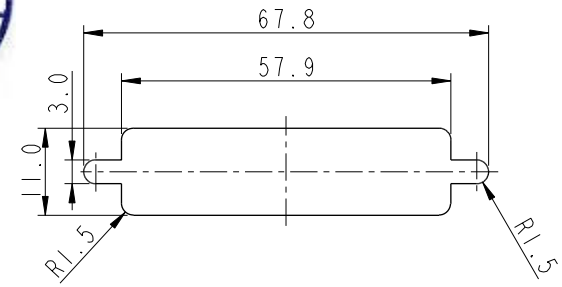


Screw L=5.0 For Panel Thickness Under 1.2mm
適用板厚為 1.2mm 以下

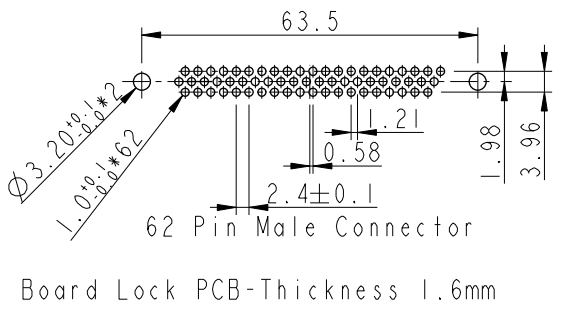
Screw L=6.0 For Panel Thickness Between 1.2~2.0mm
適用板厚為 1.2~2.0mm



- Note:
- * \varnothing Important Dimension.
 - * Waterproof Rate : IP67
 - * Do Mating Test After Glued
點膠後, 須作對插測試
 - * HD-SUB Conn. : Black Core, PBT
 - * Plastic Jacket : Black, Nylon+GF
 - * Male Pin : Copper Alloy, Gold Plated
 - * Ring : Light Blue, Silicone
 - * Screw : Copper Alloy, Nickel Plated, #4-40 UNC
 - * The 180° Board Lock Needs To Connect The Iron Shell
180° 型支架需接鐵殼



Recommended Panel Cut-Out
建議控孔尺寸



UNIT:mm			TITLE HD-Sub Conn. 62 Pins PCB Type For Panel, PCB 180° Board Lock		
TOLERANCE	.X ±0.25	.XX ±0.1	SCALE 1:1	SIZE A4	SHEET 1 OF 1
ANGLES	.XXX ±0.05	±1°	REV. C	WC-REV. B.2	\varnothing : Inspection item

Amphenol LTW
安費諾亮泰企業股份有限公司

ITEM NO HDB-62PMMP-SA7001	DRAWN BY SamChang	DATE 2013-11-13
DWG NO HDB-62PMMP-SA7001	CHECKED BY Jeffrey	DATE 2013-11-13
CUSTOMER ALTW	APPROVED BY Rita	DATE 2013-11-13

THIS DOCUMENT IS SUBJECT TO CHANGE WITHOUT NOTICE. IT IS CONFIDENTIAL AND A PROPERTY OF Amphenol LTW. DISCLOSURE TO THIRD PARTY HAS TO BE AUTHORIZED BY Amphenol LTW.