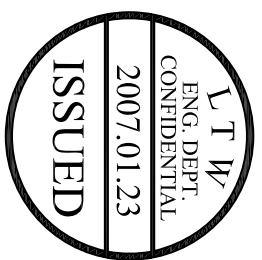
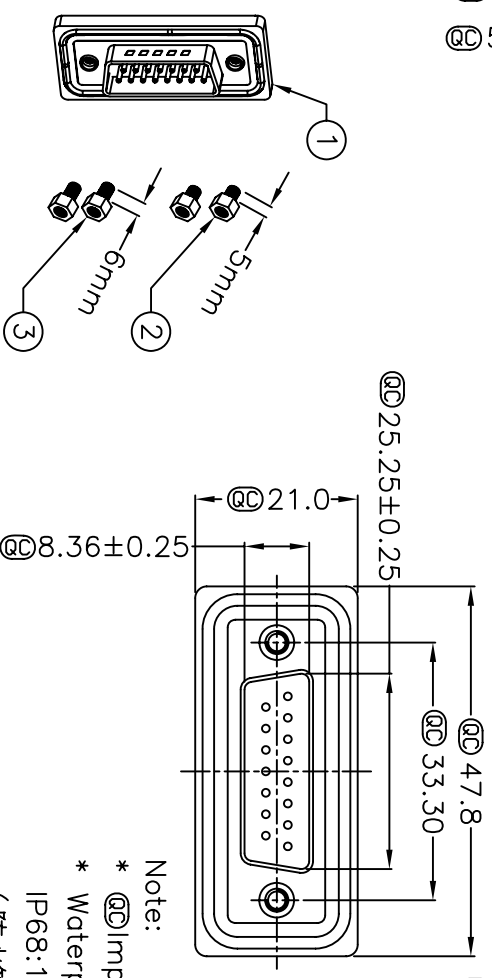
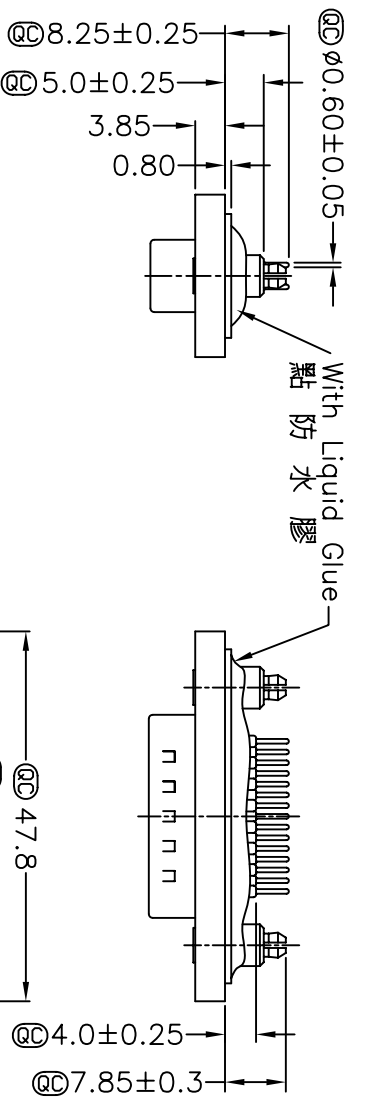
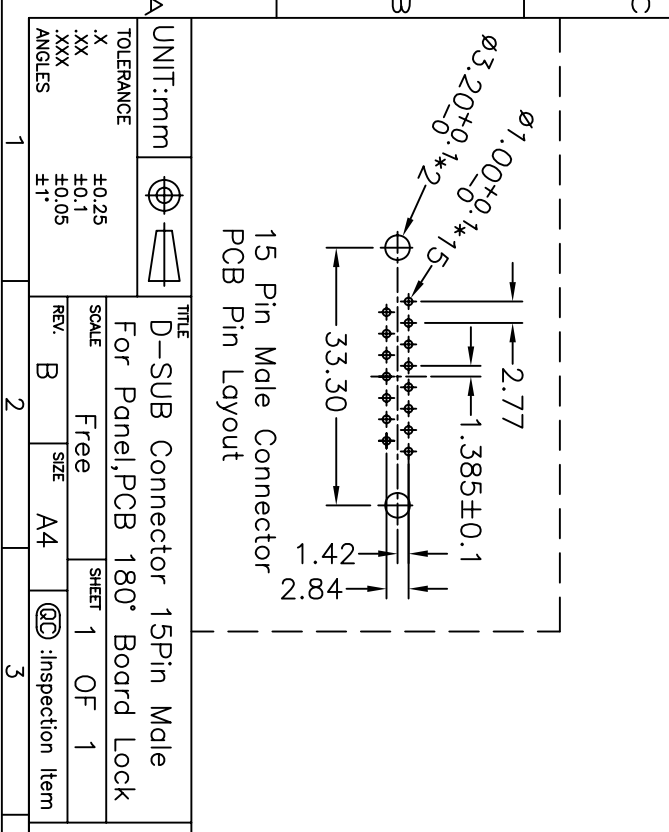


1	2	3	4	5	6	7	8
REV. A	EON NO.	DATE	SIGN	DESCRIPTION			
B	LE3-710136	2006/12/13	DAVID	Released Rev.A			
			Gao Ling	Move 0-ring to ZSE00100775			



Note:

- * @Important Dimension.
- * Waterproof Rate : IP68
- IP68:1M of depth of water 24 hours (防水等級 IP68)
- (IP68:1米水深 24小時)
- * Do Mating Test After Glued 點膠後, 須作對插測試
- * HD-SUB Conn.: Black Core , PBT
- * Plastic Jacket : Black , Nylon+GF
- * Pin : Copper Alloy , Gold Plated
- * Ring : Light Blue,Silicone
- * Screw : Copper Alloy,Nickel Plated,#4-40 UNC
- * The 180° Board Lock Needs To Connect The Iron Shell 180°型支架需接鐵殼

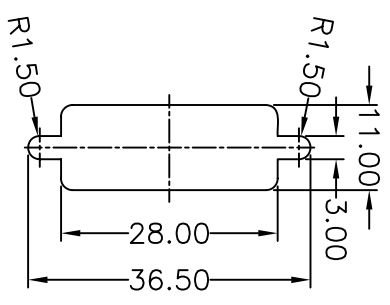


UNIT:mm	TITLE
TOLERANCE	D-SUB Connector 15Pin Male
.X ±0.25	For Panel,PCB 180° Board Lock
.XX ±0.1	SCALE
.XXX ±0.05	Free
ANGLES ±1°	REV. B
	SIZE A4
	SHEET 1
	OF 1
	@@: Inspection Item

ITEM NO	LTWSDB-15PMMP-SA8001
DWG NO	LTWSDB-15PMMP-SA8001
CUSTOMER	

DRAWN BY	Gao Ling	DATE	2006/12/13
CHECKED BY	SIMON	DATE	2006/12/22
APPROVED BY	MAX	DATE	2006/12/22

Recommended Panel Cut-Out
建議挖孔尺寸



Screw L=5.0 For Panel Thickness Under 1.2mm
適用板厚為 1.2mm以下

Screw L=6.0 For Panel Thickness Between 1.2~2.0mm
適用板厚為 1.2~2.0mm